

Blacksmiths Book

T.J.&J. Smith's

DIARY

1920

No. 8

Ruled either for Cash or Memoranda

PRICE THREE SHILLINGS NET

PUBLISHED BY

T.J.&J. SMITH, LTD

26. CHARTERHOUSE SQUARE, LONDON.

WOODBURY LOCAL HISTORY SOCIETY

Blacksmiths Book 1920

Please note that no entries exist for
Weeks 35 – 47inc. in this book.

Digitised by: Yellow Door Scanning Ltd

Operator: S A Williams

Date: 20 March 2018

T. J. & J. SMITH'S

DIARY

(COPYRIGHT)

1920

(LEAP YEAR)

Foolscap Folio Series.

No.			Price—s.	d.
x7	SIX DAYS ON A PAGE	Quarter Bound	-	1 9
7	"	" " Interleaved Blotting	-	2 0
x8	THREE DAYS ON A PAGE	" "	-	2 6
8	"	" " Interleaved Blotting	-	3 0
x8c	"	Full Bound Cloth	-	4 6
8c	"	" " Interleaved Blotting	-	5 0
x9	TWO DAYS ON A PAGE	Quarter Bound	-	3 6
9	"	" " Interleaved Blotting	-	5 0
x9c	"	Full Bound Cloth	-	6 0
9c	"	" "	-	7 0
30	ONE DAY ON A PAGE	Quarter Bound	-	7 6
30a	"	Full Bound Cloth	-	10 6
32	"	Quarter Bound, Cloth Sides, Interleaved Blotting	-	15 0
32b	"	Half Bound Leather, Cloth Sides, Interleaved Ruled Paper	-	21 0
10	"	Half Bound, Cloth Sides, Index	-	15 0
10a	"	Half Bound Leather, Cloth Sides, Index, Interleaved Blotting	-	18 0
10b	"	Full Bound Leather, Index	-	21 0

The above Editions can be had Ruled either for Cash or Memoranda.

T. J. & J. SMITH, Ltd.

26 CHARTERHOUSE SQUARE, LONDON, E.C. 1.

And may be had of all Booksellers and Stationers in the United Kingdom and at the Railway Bookstalls.

CALENDAR for 1920.

JANUARY.

THE MOON'S CHANGES.

- FULL MOON, 5th, 9.5 after.
- ☾ LAST QUARTER, 13th, 0.9 morn.
- NEW MOON, 21st, 5.27 morn.
- ☽ FIRST QUARTER, 28th, 3.38 after.

FEBRUARY.

THE MOON'S CHANGES.

- FULL MOON, 4th, 8.42 morn.
- ☾ LAST QUARTER, 11th, 8.49 after.
- NEW MOON, 19th, 9.35 after.
- ☽ FIRST QUARTER, 26th, 11.50 after.

MARCH.

THE MOON'S CHANGES.

- FULL MOON, 4th, 9.13 after.
- ☾ LAST QUARTER, 12th, 5.57 after.
- NEW MOON, 20th, 10.56 morn.
- ☽ FIRST QUARTER, 27th, 6.45 morn.

Day of the M. W. Y.			Sundays, Festivals, &c.		High Water Lon. Bridge.		Day of the M. W. Y.			Sundays, Festivals, &c.		High Water Lon. Bridge.		Day of the M. W. Y.			Sundays, Festivals, &c.		High Water Lon. Bridge.					
			A.M.	P.M.			A.M.	P.M.				A.M.	P.M.			A.M.	P.M.			A.M.	P.M.			
1	Th	1							1	M	61							1	M	61				
2	F	2					10	52	11	35	1	Tu	62			10	42	11	23	1	Tu	62		
3	S	3									2	W	63					2	W	63				
4	S	4					0	42	1	11	3	W	63			0	30	1	5	3	W	63		
5	M	5					1	33	2	1	4	Th	64			1	20	1	51	4	Th	64		
6	Tu	6					2	19	2	47	5	F	65			2	2	2	33	5	F	65		
7	W	7					3	2	3	31	6	S	66			3	18	3	11	6	S	66		
8	Th	8					3	42	4	11	7	S	67			2	40	3	11	7	S	67		
9	F	9					4	18	4	48	8	M	68			3	18	3	46	8	M	68		
10	S	10					4	53	5	22	9	Tu	69			4	27	4	49	9	Tu	69		
11	S	11					5	28	5	56	10	W	70			5	0	5	20	10	W	70		
12	M	12					6	6	6	34	11	Th	71			5	34	5	54	11	Th	71		
13	Tu	13					6	48	7	18	12	F	72			6	12	6	33	12	F	72		
14	W	14					7	40	8	15	13	S	73			6	12	6	33	13	S	73		
15	Th	15					8	50	9	37	14	S	74			6	58	7	24	14	S	74		
16	F	16					10	22	11	6	15	M	75			8	1	8	37	15	M	75		
17	S	17					11	45	—	16	16	Tu	76			11	1	11	30	16	Tu	76		
18	S	18					0	15	0	44	17	W	77			—	—	0	10	17	W	77		
19	M	19					1	3	1	28	18	Th	78			0	26	0	58	18	Th	78		
20	Tu	20					1	40	2	4	19	F	79			1	6	1	37	19	F	79		
21	W	21					2	13	2	39	20	S	80			1	43	2	12	20	S	80		
22	Th	22					2	46	3	14	21	S	81			2	18	2	45	21	S	81		
23	F	23					3	19	3	48	22	M	82			2	54	3	21	22	M	82		
24	S	24					3	54	4	21	23	Tu	83			3	33	3	57	23	Tu	83		
25	M	25					4	29	4	52	24	W	84			4	11	4	34	24	W	84		
26	M	26					5	6	5	31	25	Th	85			4	51	5	14	25	Th	85		
27	T	27					5	47	6	14	26	F	86			5	35	6	0	26	F	86		
28	W	28					6	37	7	8	27	S	87			6	28	6	57	27	S	87		
29	Th	29					7	39	8	17	28	S	88			7	35	8	9	28	S	88		
30	F	30					9	2	9	49	29	M	89			8	57	9	40	29	M	89		
31	S	31									30	Tu	90			10	33	11	7	30	Tu	90		
											31	W	91			11	52	—	—	31	W	91		

APRIL.

THE MOON'S CHANGES.

- FULL MOON, 3rd, 10.55 morn.
- ☾ LAST QUARTER, 11th, 1.24 after.
- NEW MOON, 18th, 9.43 after.
- ☽ FIRST QUARTER, 25th, 1.28 after.

MAY.

THE MOON'S CHANGES.

- FULL MOON, 3rd, 1.47 morn.
- ☾ LAST QUARTER, 11th, 5.51 morn.
- NEW MOON, 18th, 6.25 morn.
- ☽ FIRST QUARTER, 24th, 9.7 after.

JUNE.

THE MOON'S CHANGES.

- FULL MOON, 1st, 5.18 after.
- ☾ LAST QUARTER, 9th, 6.59 after.
- NEW MOON, 16th, 1.41 after.
- ☽ FIRST QUARTER, 23rd, 6.50 morn.

Day of the M. W. Y.			Sundays, Festivals, &c.		High Water Lon. Bridge.		Day of the M. W. Y.			Sundays, Festivals, &c.		High Water Lon. Bridge.		Day of the M. W. Y.			Sundays, Festivals, &c.		High Water Lon. Bridge.					
			A.M.	P.M.			A.M.	P.M.				A.M.	P.M.			A.M.	P.M.			A.M.	P.M.			
1	Th	92					0	12	0	48	1	S	122			0	33	1	2	1	Tu	153		
2	F	93					1	0	1	32	2	S	123			1	16	1	40	2	W	154		
3	S	94					1	39	2	9	3	M	124			1	54	2	15	3	Th	155		
4	S	95					2	16	2	44	4	Tu	125			2	31	2	49	4	F	156		
5	M	96					2	53	3	19	5	W	126			3	6	3	22	5	S	157		
6	Tu	97					3	29	3	51	6	Th	127			3	41	3	54	6	S	158		
7	W	98					4	1	4	21	7	F	128			4	13	4	24	7	M	159		
8	Th	99					4	34	4	52	8	S	129			4	47	4	57	8	Tu	160		
9	F	100					5	7	5	24	9	S	130			5	23	5	34	9	W	161		
10	S	101					5	43	6	2	10	M	131			6	6	6	19	10	Th	162		
11	S	102					6	28	6	50	11	Tu	132			6	57	7	13	11	F	163		
12	M	103					7	25	7	53	12	W	133			7	56	8	19	12	S	164		
13	Tu	104					8	39	9	14	13	Th	134			9	9	9	36	13	S	165		
14	W	105					10	6	10	35	14	F	135			10	25	10	49	14	M	166		
15	Th	106					11	21	11	38	15	S	136			11	27	11	45	15	Tu	167		
16	F	107					—	—	0	15	16	S	137			—	—	0	16	16	W	168		
17	S	108					0	25	0	56	17	M	138			0	33	1	17	17	Th	169		
18	S	109					1	6	1	34	18	Tu	139			1	19	1	44	18	F	170		
19	M	110					1	45	2	12	19	W	140			2	5	2	30	19	S	171		
20	Tu	111					2	27	2	53	20	Th	141			2	54	3	17	20	S	172		
21	W	112					3	10	3	35	21	F	142			3	43	4	3	21	M	173		
22	Th	113					3	54	4	16	22	S	143			4	31	4	49	22	Tu	174		
23	F	114					4	38	5	0	23	S	144			5	28	5	44	23	W	175		
24	S	115					5	27	5	51	24	M	145			6	17	6	36	24	Th	176		
25	S	116					6	24	6	50	25	Tu	146			7	16	7	37	25	F	177		
26	M	117					7	29	7	58	26	W	147			8	24	8	48	26	S	178		
27	Tu	118					8	46	9	20	27	Th	148			9	36	10	27	27	S	179		
28	W	119					10	12	10	40	28	F	149			10	46	11	10	28	M	180		
29	Th	120					11	23	11	42	29	S	150			11	46	—	29	29	Tu	181		
30	F	121					—	—	0	17	30	S	151			0	6	0	34	30	W	182		
											31	M	152			0	52	1	15					

Principal Newspaper Offices in London.

- Aberdeen Free Press—149 Fleet St., E.C. 4.
 Adelaide Advertiser—160 Fleet St., E.C. 4.
 Adelaide Observer—80 Fleet St., E.C. 4.
 Advocate of India—45 Watling St., E.C. 4.
 Agricultural Gazette—8 Bream's Bldgs., E.C. 4.
 Amateur Gardening—148 Aldersgate St., E.C. 1.
 Architect—Imperial Bldgs., Lud. Circus, E.C. 4.
 Army & Navy Gazette—22 Essex St., W.C. 2.
 Athenæum—10 Adelphi Terrace, W.C. 2.
 Australasian—38 King William St., E.C. 4.
 Autocar—20 Tudor St., E.C. 4.
 Auckland Weekly News—85 Fleet St., E.C. 4.
 Baptist Times and Freeman—4 Southampton Row, W.C. 1.
 Bazaar, Exchange & Mart—Bream's Buildings, E.C. 4.
 Belfast News Letter—170 Fleet Street, E.C. 4.
 Birmingham Daily Mail—88 Fleet St., E.C. 4.
 Birmingham Gazette & Express—17 Bouverie St., E.C. 4.
 Birmingham Post—88 Fleet St., E.C. 4.
 Bloemfontein Post—85 Fleet St., E.C. 4.
 Board of Trade Journal—Fetter Lane, E.C. 4.
 Bookseller—12 Warwick Lane, E.C. 4.
 Bradford Telegraph—62 Ludgate Hill, E.C. 4.
 Bristol Evening News—185 Fleet St., E.C. 4.
 Bristol Observer—59 Fleet St., E.C. 4.
 Bristol Times and Mirror—185 Fleet St., E.C. 4.
 Bristol West. Daily Press—59 Fleet St., E.C. 4.
 British Journal of Inebriety—8 Henrietta St., W.C. 2.
 British Medical Journal—429 Strand, W.C. 2.
 British Weekly—St. Paul's House, Warwick Square, E.C. 4.
 Builder—4 Catherine St., Strand, W.C. 2.
 Building News—Effingham House, Arundel St., W.C. 2.
 Bystander—Tallis House, Tallis St., E.C. 4.
 Canada—Kingsway House, W.C. 2.
 Canadian Gazette—La Bella Sauvage, Ludgate Hill, E.C. 4.
 Cape Times—14 St. Mary Axe, E.C. 3.
 Carlisle Journal—5 New Bridge St., E.C. 4.
 Catholic Herald—8 Bouverie St., E.C. 4.
 Ceylon Times—27 Mincing Lane, E.C. 1.
 Chemical News—16 Newcastle St., E.C. 4.
 Chemists and Druggists, 42 Cannon St., E.C. 4.
 Christian World—13 Fleet St., E.C. 4.
 Church Family News—17 Tavistock St., W.C. 2.
 Church Times—7 Portugal St., W.C. 2.
 Citizen—2 Copthall Buildings, E.C. 2.
 City Press—148 Aldersgate St., E.C. 1.
 City Review—7 Hosier Lane, E.C. 1.
 Civil Service Gazette—12 Suffolk S.W. 1.
 Civilian—28 Martin's Lane, E.C. 4.
 Coal & Iron Journal—16 St. Stephen's House, S.W. 1.
 Colliery Guardian—30 Fournival St., E.C. 4.
 Commercial Motor—7 Rosebery Avenue, E.C. 1.
 Country Life—20 Tavistock St., W.C. 2.
 Court Journal—Dudley House, Southampton Street, W.C. 2.
 Cycling—7-15 Rosebery Avenue, E.C. 1.
 Daily Chronicle—80 Fleet St., E.C. 4.
 Daily Express—St. Bride St., E.C. 4.
 Daily Graphic—Tallis St., E.C. 4.
 Daily Mail—Carmelite St., E.C. 4.
 Daily Mirror—Bouverie St., E.C. 4.
 Daily News & Leader—Bouverie St., E.C. 4.
 Daily Sketch—46 Shoe Lane, E.C. 4.
 Daily Telegraph—135 Fleet St., E.C. 4.
 Draper—46 Aldersgate St., E.C. 1.
 Draper's Record—155 Cheapside, E.C. 2.
 Dublin Evening Mail—85 Fleet St., E.C. 4.
 Dublin Evening Telegraph—118 Fleet St., E.C. 4.
 Dublin Irish Times—59 Fleet St., E.C. 4.
 East Anglian Daily Times—149 Fleet St., E.C. 4.
 Eastern Daily Press—151 Fleet St., E.C. 4.
 Economist—3 Arundel St., W.C. 2.
 Edinburgh Evening Dispatch—45 Fleet St., E.C. 4.
 Educational Times—89 Farringdon St., E.C. 4.
 Egyptian Gazette—Egypt House, New Broad St., E.C. 2.
 Electrical Review—4 Ludgate Hill, E.C. 4.
 Electrical Times—Sardinia House, Kingsway, W.C. 2.
 Electrician—8 Bouverie St., E.C. 4.
 Electricity—36 Maiden Lane, Strand, W.C. 2.
 Engineer—33 Norfolk St., Strand, W.C. 2.
 Engineering—35 & 36 Bedford St., W.C. 2.
 English Churchman—74 Strand, W.C. 2.
 English Mechanic—Effingham House, Arundel St., W.C. 2.
 Era, The—35 Wellington St., W.C. 2.
 Evening News—Carmelite Street, E.C. 4.
 Evening Standard & St. James's Gazette—46 Shoe Lane, E.C. 4.
 Family Doctor—29 Essex St., W.C. 2.
 Farm & Home—63 Lincoln's Inn Fields, W.C. 2.
 Farm, Field & Fireside—3 Wellington St., Strand, W.C. 2.
 Farmer & Stockbreeder—6 Essex St., W.C. 2.
 Field—Bream's Buildings, E.C. 4.
 Finance—Broad Street House, E.C. 2.
 Financial News—111 Queen Victoria St., E.C. 4.
 Financial Standard—Broad St. House, E.C. 2.
 Financial Times—72 Coleman St., E.C. 4.
 Financier & Bullionist—49 Wool Exchange, E.C. 2.
 Fishing Gazette—19 Adam St., W.C. 2.
 Freeman's Journal—118 Fleet St., E.C. 4.
 Freemason—5 Whitefriars St., E.C. 4.
 Gardener's Chronicle—41 Wellington St., Covent Garden, W.C. 2.
 Gardening Illustrated—63 Lincoln's Inn Fields, W.C. 2.
 General Weekly Shipping List—13 St Mary Axe, E.C. 3.
 Gentlewoman, The—70 Long Acre, W.C. 2.
 Glasgow Daily Record—65 Fleet St., E.C. 4.
 Glasgow Herald—112 Fleet St., E.C. 4.
 Glasgow Weekly Mail—65 Fleet St., E.C. 4.
 Globe—367 Strand, W.C. 2.
 Graphic—Tallis Street, E.C. 4.
 Grocer—Eastcheap Buildings, E.C. 3.
 Guardian—29 King St., W.C. 2.
 Health—358 Strand, W.C. 2.
 Homeopathic World—12 Warwick Lane, E.C. 4.
 Hospital—28 Southampton St., W.C. 2.
 Hull Daily Mail—92 Fleet St., E.C. 4.
 Hull East. Morning News—159 Fleet St., E.C. 4.
 Illustrated London News—172 Strand, W.C. 2.
 Illus. Sporting & Dramatic News—172 Strand, W.C. 2.
 Indianman—Devonshire Square, E.C. 2.
 Indian Daily News—Temple Chambers, Temple Avenue, E.C. 4.
 Insurance, Banking and Financial Review—4 Newman St., W. 1.
 Iron & Coal Trades Review—165 Strand, W.C. 2.
 Jewish Chronicle—2 Finsbury Square, E.C. 2.
 Johannesburg Star—85 Fleet St., E.C. 4.
 John Bull—93 Long Acre, W.C. 2.
 Journal of Education & School World—3 Ludgate Broadway, E.C. 4.
 Kinematograph and Lantern Weekly—9-11 Tottenham St., W. 1.
 Knowledge and Illustration Scientific News—42 Bloomsbury Square, W.C. 1.
 Labour News—10 Farringdon Avenue, E.C. 4.
 Ladies' Field—8 Southampton St., W.C. 2.
 Lady—39 & 40 Bedford St., Strand, W.C. 2.
 Lady's Pictorial—172 Strand, W.C. 2.
 Lancet—423 Strand, W.C. 2.
 Land and Water—2 Chancery Lane, W.C. 2.
 Law Journal—37 & 39 Essex St., W.C. 2.
 Law Times—Bream's Buildings, E.C. 4.
 Leeds Mercury—65 Fleet St., E.C. 4.
 Le Journal—190 Fleet St., E.C. 4.
 Le Matin—160 Queen Victoria St., E.C. 4.
 Literary World—13 Fleet St., E.C. 4.
 Live Stock Journal—8 Bream's Bldgs., E.C. 4.
 Liverpool Courier—187 Fleet St., E.C. 4.
 Liverpool Daily Post and Mercury—Liverpool Echo—Liverpool Weekly Mercury & Liverpool Weekly Post—138 Fleet St., E.C. 4.
 Lloyd's List—Royal Exchange, E.C. 3.
 Lloyd's Weekly News—12 Salisbury Square, Fleet St., E.C. 4.
 London Gazette—Imperial House, Kingsway, W.C. 2.
 London Mail—15 Whitefriars St., E.C. 4.
 London Opinion—67 Chandos St., W.C. 2.
 Manchester Daily Dispatch—Sunday Chronicle—Daily Sketch—Evening Chronicle—Athletic News—Shoe Lane, E.C. 4.
 Manchester Evening News—43 Fleet St., E.C. 4.
 Manchester Guardian—43 Fleet St., E.C. 4.
 Manchester Weekly Times—92 Fleet St., E.C. 4.
 Mark Lane Express—3 Wellington St., W.C. 2.
 Medical Press and Circular—8 Henrietta St., Covent Garden, W.C. 2.
 Medical Times—49 Watling St., E.C. 4.
 Melbourne Age—160 Fleet St., E.C. 4.
 Melbourne Argus—10 Salisbury Square, E.C. 4.
 Melbourne Herald—92 Fleet St., E.C. 4.
 Melbourne Leader—160 Fleet St., E.C. 4.
 Methodist Recorder—161 Fleet St., E.C. 4.
 Methodist Times—125 Fleet St., E.C. 4.
 Midland Daily Telegraph—174 Fleet St., E.C. 4.
 Mining Journal—15 George St., Mansion House, E.C. 4.
 Mining World—Gresham House, E.C. 2.
 Money—11 Queen Victoria St., E.C. 4.
 Money Market Review—St. Stephen's Chambers Telegraph St., E.C. 2.
 Montreal Star, 17 Cockspur St., S.W. 1.
 Morning Advertiser—127 Fleet St., E.C. 4.
 Morning Post—346 Strand, W.C. 2.
 Motor—7-15 Rosebery Avenue, E.C. 1.
 Municipal Journal—Sardinia House, Kingsway, W.C. 2.
 Musical Times—160 Wardour St., W. 1.
 Nation—10 Adelphi Terrace, W.C. 2.
 National Temperance Quarterly—34 Paternoster Row, E.C. 4.
 Nature—St. Martin St., W.C. 2.
 Naval & Military Review—Norfolk House, W.C. 2.
 Near East—Devonshire Square, E.C. 2.
 Newcastle Chronicle—82 Fleet St., E.C. 4.
 Newcastle North Mail and Northern Weekly Leader—53 Fleet St., E.C. 4.
 News of the World—30 Bouverie St., E.C. 4.
 New Statesmen—10 Gt. Queen St., W.C. 2.
 New Witness—20 Essex St., Strand, W.C. 2.
 New York Herald—130 Fleet St., E.C. 4.
 New Zealand Herald—85 Fleet St., E.C. 4.
 Notes & Queries—11 Bream's Buildings, E.C. 4.
 Nursing Mirror—28 Southampton St., Strand, W.C. 2.
 Nursing Times—St. Martin St., W.C. 2.
 Observer—22 Tudor St., E.C. 4.
 Outlook—New Street Square, E.C. 4.
 Pall Mall Gazette—25 Tudor St., E.C. 4.
 Passing Show—94 Long Acre, W.C. 2.
 People—Milford Lane, Strand, W.C. 2.
 Photography—20 Tudor St., E.C. 4.
 Poultry—10 Essex St., W.C. 2.
 Poultry World—154 Fleet St., E.C. 4.
 Primitive Methodist Leader—73 Farringdon St., E.C. 4.
 Progress—(Braille type) 206 Gt. Portland St. W. 1.
 Public Opinion—125 Fleet St., E.C. 4.
 Publishers' Circular—10 Adam St., W.C. 2.
 Punch—10 Bouverie St., E.C. 4.
 Quarry—30 & 31 Fournival St., E.C. 4.
 Queen—Bream's Buildings, E.C. 4.
 Railway Gazette—Queen Anne's Cham., S.W. 1.
 Railway News—91 Temple Chambers, E.C. 4.
 Record—2 Red Lion Court, E.C. 4.
 Referee—12 Salisbury Square, E.C. 4.
 Reynolds's Newspaper, 8 Temple Avenue, E.C. 4.
 Saturday Review—10 King St., Covent Garden, W.C. 2.
 School Government Chronicle—2 & 4 Tudor St., E.C. 4.
 Scotsman—45 Fleet St., E.C. 4.
 Sheffield Daily Telegraph—Sheffield Weekly News—Weekly Telegraph—Yorkshire Telegraph and Star—181 Fleet St., E.C. 4.
 Shipbuilding & Shipping Record—Queen Anne's Chambers, S.W. 1.
 Sketch—172 Strand, W.C. 2.
 South Africa—83 Bishopsgate, E.C. 2.
 South Wales Argus—88 Fleet St., E.C. 4.
 South Wales Daily News—190 Fleet St., E.C. 4.
 South Wales Daily Post—92 Fleet St., E.C. 4.
 Spectator—1 Wellington St., W.C. 2.
 Sphere—6 Great New Street, E.C. 4.
 Sporting Chronicle—Shoe Lane, E.C. 4.
 Sporting Life—148 Fleet St., E.C. 4.
 Sporting Times—18 Regent St., S.W. 1.
 Sports Argus—17 Bouverie St., E.C. 4.
 Sportsman—140 Fleet St., E.C. 4.
 Stage—16 York St., W.C. 2.
 Star—Bouverie St., E.C. 4.
 Stationery Trades Journal—12 Warwick Lane, E.C. 4.
 Statist—51 Cannon St., E.C. 4.
 Stock Exchange Gazette—Gresham House, Old Broad St., E.C. 2.
 Sunday School Chronicle & Christian Outlook—57 Ludgate Hill, E.C. 4.
 Sunday Times—Windsor Ho., Kingsway, W.C. 2.
 Surveyor—24 Bride Lane, Fleet St., E.C. 4.
 Sydney Bulletin—15 Bride St., E.C. 4.
 Sydney Mail—40 King St., Cheapside, E.C. 2.
 Sydney Morning Herald—40 King St., Cheapside, E.C. 4.
 Sydney Telegraph—160 Fleet St., E.C. 4.
 Syren & Shipping—93 Leadenhall St., E.C. 3.
 Tablet—19 Henrietta St., W.C. 2.
 Tatler—6 Great New St., E.C. 4.
 Territorial Service Gazette—11 Gough Square, E.C. 4.
 Times (& Times Weekly Edition)—Printing House Square, E.C. 4.
 Times of India—99 Shoe Lane, E.C. 4.
 Truth—10 Carteret St., S.W. 1.
 Vanity Fair—69 Fleet St., E.C. 4.
 War Cry—Judd St., King Cross, W.C. 1.
 Weekly Dispatch—Carmelite St., E.C. 4.
 Western Daily Mercury—88 Fleet St., E.C. 4.
 Western Mail—176 Fleet St., E.C. 4.
 Western Morning News—47 Fleet St., E.C. 4.
 Westminster Gazette—Tudor House, Tudor St., E.C. 4.
 Whitehall Review—10a Adelphi Terrace, W.C. 2.
 World—93 Long Acre, W.C. 2.
 World's Work—21 Bedford St., W.C. 2.
 Yorkshire Daily Observer—172 Fleet St., E.C. 4.
 Yorkshire Post—Yorkshire Evening Post—Yorkshire Weekly Post—171 Fleet St., E.C. 4.

TABLE OF INCOME OR WAGES.

Per Year.		Per Month.		Per Week.		Per Day.		Per Year.		Per Month.		Per Week.		Per Day.			
£	s.	s.	d.	s.	d.	s.	d.	£	s.	£	s.	£	s.	£	s.	£	s.
1	0	1	8	0	4½	0	0	8	8	0	14	0	3	2½	0	5½	
1	10	2	6	0	7	0	1	8	10	0	14	2	3	3½	0	5½	
2	0	3	4	0	9½	0	1½	9	0	0	15	0	3	5½	0	6	
2	2	3	6	0	9½	0	1½	9	9	0	15	9	3	7½	0	6½	
2	10	4	2	0	11½	0	1½	10	0	0	16	8	3	10½	0	6½	
3	0	5	0	1	1½	0	2	10	10	0	17	6	4	0½	0	7	
3	3	5	3	1	2½	0	2	11	0	0	18	4	4	3½	0	7½	
3	10	5	10	1	4½	0	2½	11	11	0	19	3	4	5½	0	7½	
4	0	6	8	1	6½	0	2½	12	0	1	0	0	4	7½	0	8	
4	4	7	0	1	7½	0	2½	12	12	1	1	0	4	10½	0	8½	
4	10	7	6	1	8½	0	3	13	0	1	1	8	5	3	0	8½	
5	0	8	4	1	11	0	3½	13	13	1	2	9	5	3	0	9	
5	5	8	9	2	0½	0	3½	14	0	1	3	4	5	4½	0	9½	
5	10	9	2	2	1½	0	3½	14	14	1	4	6	5	7½	0	9½	
6	0	10	0	2	3½	0	4	15	0	1	5	0	5	9½	0	9½	
6	6	10	6	2	5	0	4½	15	15	1	6	3	6	0	10½	0	10½
6	10	10	10	2	6	0	4½	16	0	1	6	8	6	1½	0	10½	
7	0	11	8	2	8½	0	4½	16	16	1	8	0	6	5½	0	11	
7	7	12	3	2	10	0	4½	17	0	1	8	4	6	6½	0	11½	
7	10	12	6	2	10½	0	5	17	17	1	9	9	6	10½	0	11½	
8	0	13	4	3	1	0	5½	18	0	1	10	0	6	11	0	11½	

By the above it may be seen at a glance what £1 to £1,000 a year is by the calendar month, week, or day. If the sum be guineas instead of pounds, add one penny to each month, or one farthing to each week.

Weights and Measures.

COAL WEIGHT.

14 lbs.	Equal	1 Stone
28 lbs.	"	1 Quarter Cwt.
56 lbs.	"	1 Half Cwt.
1 Sack, 112 lbs.	"	1 Cwt.
1 Double Sack, 224 lbs.	"	2 Cwt.
20 Cwt.	"	1 Ton
21 Tons 4 Cwt.	"	1 Barge or Keel
424 Tons	"	1 Shipload
7 Tons	"	1 Room
52 Cwt.	"	1 Chaldron
8 Tons	"	1 Truck

PAPER MEASURE.

24 Sheets	Equal	1 Quire
20 Quires	"	1 Ream
516 Sheets Printing Paper	"	1 Ream
2 Reams	"	1 Bundle
5 Bundles	"	1 Bale

BRITISH WEIGHTS & MEASURES.

APOTHECARIES FLUID MEASURE.

Value	Name	Metric Equivalent
1 Minim	1 Minim	Equal 0.06 Millilitres
60 Minims	Equal 1 Fluid Drachm	" 3.55 "
8 Fluid Drachms	1 Fluid Ounce	" 28.41 "
20 Fluid Ounces	1 Imperial Pint	" 568 Litres
8 Pints	1 Gallon	" 4.546 "

APOTHECARIES WEIGHT MEASURE.

20 Grains	Equal	1 Scruple
3 Scruples	"	1 Drachm
8 Drachms	"	1 Apothecaries oz.

AVOIRDUPOIS WEIGHT.

Value	Name	Metric Equivalent
27½ Troy Grains	Equal 1 Dram	1.772 Grammes
16 Drams	1 Ounce	28.35 "
16 Ounces	1 Pound	453.59 "
14 Pounds	1 Stone	6.35 Kilograms.
28 Pounds	1 Quarter	12.7 "
100 Pounds	1 Cental or New cwt.	45.392 "
4 Qrs., 112 Pounds	1 Cwt.	50.8 "
20 Cwts.	1 Ton	1016 "

MEASURES OF CAPACITY FOR LIQUIDS AND DRY GOODS.

Value	Name	Metric Equivalent
8.665 Cubic Inches	Equal 1 Gill	Equal 142 Litres
4 Gills	1 Pint	568 "
2 Pints	1 Quart	1.136 "
4 Quarts	1 Gallon	4.546 "
2 Gallons	1 Peck	9.092 "
4 Pecks	1 Bushel	36.37 "
8 Bushels	1 Quarter	2.91 Hecto.

METRIC WEIGHTS & MEASURES.

LENGTH.

10 Millimetres	Equal	1 Centimetre	Equal	0.3937 inches
10 Centimetre	"	1 Decimetre	"	0.328084 feet
10 Decimetres	"	1 Metre	"	1.093614 yards
10 Metres	"	1 Decametre	"	1.9884 poles
10 Decametres	"	1 Hectometre	"	0.4971 furlg.
10 Hectometres	"	1 Kilometre	"	0.6214 miles

WEIGHT.

10 Milligrams	Equal	1 Centigram	Equal	0.1543 grains
10 Centigrams	"	1 Decigram	"	1.5432 "
10 Decigrams	"	1 Gramme	"	15.4323 "
10 Grammes	"	1 Dekagram	"	5.6438 drams
10 Dekagrams	"	1 Hectogram	"	3.5274 ozs.
10 Hectograms	"	1 Kilogram	"	2.204632 lbs.
10 Kilograms	"	1 Myriagram	"	1.5747 stone
10 Myriagrams	"	1 Quintal	"	1.9684 cwts.
10 Quintals	"	1 Tonne	"	0.9842 ton

CAPACITY.

10 Millilitres	Equal	1 Centilitre	Equal	0.0704 gill
10 Centilitres	"	1 Decilitre	"	0.1759 pint
10 Decilitres	"	1 Litre	"	0.8799 quart
10 Litres	"	1 Dekalitre	"	2.1997 galls.
10 Dekalitres	"	1 Hectolitre	"	2.7497 bushels

CUBIC MEASURE.

Value	Name	Metric Equivalent
1,728 Cubic Inches	Equal 1 Cubic Foot	28.317 cub. decmts.
27 Cubic Feet	1 Cubic Yard	76.455 cub. metrs.

MEASURES OF LENGTH.

Value	Name	Metric Equivalent
12 Inches	Equal 1 Foot	30.48 centimetres
3 Feet	1 Yard	91.44 "
2 Yards	1 Fathom	1.829 metres
5½ Yards	1 Pole or Rod	5.03 "
4 Poles, 22 Yards	1 Chain	20.12 "
40 Poles, 220 Yards	1 Furlong	201.17 "
8 Furlongs, 1760 Yds.	1 Mile	1.609 kilometres

MEASURES OF SURFACE.

Value	Name	Metric Equivalent
144 Sq. Inches	Equal 1 Sq. Foot	9.2203 sq. decimetres
9 Sq. Feet	1 Sq. Yard	8.361 " metre
30¼ Yards	1 Sq. Rod, Pole or Perch	25.29 " "
40 Poles	1 Rood	10.117 ares
4 Roods, 4840 Sq. Yards	1 Acre	4.047 hectares.
640 Acres	1 Sq. Mile	259 " "

CALENDAR, 1921.

JANUARY							MAY							SEPTEMBER									
Sunday	2	9	16	23	30	Sunday	..	1	8	15	22	29	..	Sunday	4	11	18	25	..
Monday	3	10	17	24	31	Monday	..	2	9	16	23	30	..	Monday	5	12	19	26	..
Tuesday	4	11	18	25	..	Tuesday	..	3	10	17	24	31	..	Tuesday	6	13	20	27	..
Wednesday	5	12	19	26	..	Wednesday	..	4	11	18	25	Wednesday	7	14	21	28	..
Thursday	6	13	20	27	..	Thursday	..	5	12	19	26	Thursday	8	15	22	29	..
Friday	7	14	21	28	..	Friday	..	6	13	20	27	Friday	9	16	23	30	..
Saturday	1	8	15	22	29	Saturday	..	7	14	21	28	Saturday	10	17	24

FEBRUARY							JUNE							OCTOBER									
Sunday	6	13	20	27	..	Sunday	5	12	19	26	..	Sunday	2	9	16	23	30
Monday	7	14	21	28	..	Monday	6	13	20	27	..	Monday	3	10	17	24	..
Tuesday	..	1	8	15	22	Tuesday	7	14	21	28	..	Tuesday	4	11	18	25	..
Wednesday	..	2	9	16	23	Wednesday	..	1	8	15	22	29	..	Wednesday	5	12	19	26	..
Thursday	..	3	10	17	24	Thursday	..	2	9	16	23	30	..	Thursday	6	13	20	27	..
Friday	..	4	11	18	25	Friday	..	3	10	17	24	Friday	7	14	21	28	..
Saturday	..	5	12	19	26	Saturday	..	4	11	18	25	Saturday	1	8	15	22	29

MARCH							JULY							NOVEMBER									
Sunday	6	13	20	27	..	Sunday	3	10	17	24	31	Sunday	6	13	20	27	..
Monday	7	14	21	28	..	Monday	4	11	18	25	..	Monday	7	14	21	28	..
Tuesday	..	1	8	15	22	29	..	Tuesday	5	12	19	26	..	Tuesday	1	8	15	22	29
Wednesday	..	2	9	16	23	30	..	Wednesday	6	13	20	27	..	Wednesday	2	9	16	23	30
Thursday	..	3	10	17	24	31	..	Thursday	7	14	21	28	..	Thursday	3	10	17	24	..
Friday	..	4	11	18	25	Friday	1	8	15	22	29	Friday	4	11	18	25	..
Saturday	..	5	12	19	26	Saturday	2	9	16	23	30	Saturday	5	12	19	26	..

APRIL							AUGUST							DECEMBER									
Sunday	3	10	17	24	..	Sunday	7	14	21	28	..	Sunday	4	11	18	25	..
Monday	4	11	18	25	..	Monday	1	8	15	22	29	Monday	5	12	19	26	..
Tuesday	5	12	19	26	..	Tuesday	2	9	16	23	30	Tuesday	6	13	20	27	..
Wednesday	6	13	20	27	..	Wednesday	3	10	17	24	31	Wednesday	7	14	21	28	..
Thursday	7	14	21	28	..	Thursday	4	11	18	25	..	Thursday	1	8	15	22	29
Friday	1	8	15	22	29	Friday	5	12	19	26	..	Friday	2	9	16	23	30
Saturday	2	9	16	23	30	Saturday	6	13	20	27	..	Saturday	3	10	17	24	31

CALENDAR NOTES FOR 1921.

Golden Number 3	Mid-Lent Sunday Feb. 27th	June 1st Wednesday
Epact 21	April 1st Friday	July 1st Friday
Solar Cycle 26	Palm Sunday March 20th	August 1st Monday
Dominical Letter B	Good Friday March 25th	Augst Bank Holiday 1st
Julian Period 6634	Last day of Lent March 26th	September 1st Thursday
January 1st Saturday	Easter Monday March 28th	Jewish New Year October 3rd
Sundays after Epiphany 2	May 1st Sunday	October 1st Saturday
February 1st Tuesday	Bank Holiday (Scotland) May 2nd	November 1st Tuesday
Ash Wednesday Feb. 10th	Ascension Day May 5th	Advent Sunday Nov. 27th
First Sunday in Lent Feb. 13th	Whit Monday May 16th	December 1st Thursday
March 1st Tuesday	Trinity Sunday May 22nd	Christmas Day Sunday
	Sundays after Trinity 26	December 31st Saturday

COMMISSION AND DISCOUNT TABLE.

	1 per Cent.	1 1/2 per Cent.	1 per Cent.	2 per Cent.	2 1/2 per Cent.	4 per Cent.	5 per Cent.	6 per Cent.	7 per Cent.	7 1/2 per Cent.	10 per Cent.	12 1/2 per Cent.	15 per Cent.	17 1/2 per Cent.	20 per Cent.
£ s. d.	s. d.	s. d.	s. d.	s. d.	s. d.	s. d.	s. d.	s. d.	s. d.	s. d.	s. d.	s. d.	s. d.	s. d.	s. d.
0 0 2	0 0 1/4	0 0 1/4	0 0 1/4	0 0 1/4	0 0 1/4
0 0 3	0 0 1/4	0 0 1/4	0 0 1/4	0 0 1/4	0 0 1/4
0 0 4	0 0 1/4	0 0 1/4	0 0 1/4	0 0 1/4	0 0 1/4	0 0 1/4	0 0 1/4	0 0 1/4
0 0 5	0 0 1/4	0 0 1/4	0 0 1/4	0 0 1/4	0 0 1/4	0 0 1/4	0 0 1/4	0 0 1/4	0 0 1/4
0 0 6	0 0 1/4	0 0 1/4	0 0 1/4	0 0 1/4	0 0 1/4	0 0 1/4	0 0 1/4	0 0 1/4	0 0 1/4	0 0 1/4
0 0 9	0 0 1/4	0 0 1/4	0 0 1/4	0 0 1/4	0 0 1/4	0 0 1/4	0 0 1/4	0 0 1/4	0 0 1/4	0 0 1/4
0 1 0	..	0 0 1/4	0 0 1/4	0 0 1/4	0 0 1/4	0 0 1/4	0 0 1/4	0 0 1/4	0 0 1/4	0 0 1/4	0 1	0 1 1/4	0 1 1/4	0 1 1/4	0 2 1/4
0 1 6	0 0 1/4	0 0 1/4	0 0 1/4	0 0 1/4	0 0 1/4	0 0 1/4	0 0 1/4	0 0 1/4	0 0 1/4	0 0 1/4	0 1 1/4	0 2 1/4	0 2 1/4	0 2 1/4	0 3 1/4
0 2 0	0 0 1/4	0 0 1/4	0 0 1/4	0 0 1/4	0 0 1/4	0 0 1/4	0 0 1/4	0 0 1/4	0 0 1/4	0 0 1/4	0 2 1/4	0 3 1/4	0 3 1/4	0 4 1/4	0 4 1/4
0 2 6	0 0 1/4	0 0 1/4	0 0 1/4	0 0 1/4	0 0 1/4	0 0 1/4	0 0 1/4	0 0 1/4	0 0 1/4	0 0 1/4	0 3 1/4	0 4 1/4	0 4 1/4	0 5 1/4	0 6 1/4
0 3 0	0 0 1/4	0 0 1/4	0 0 1/4	0 0 1/4	0 0 1/4	0 0 1/4	0 0 1/4	0 0 1/4	0 0 1/4	0 0 1/4	0 3 1/4	0 4 1/4	0 5 1/4	0 6 1/4	0 7 1/4
0 3 6	0 0 1/4	0 0 1/4	0 0 1/4	0 0 1/4	0 0 1/4	0 0 1/4	0 0 1/4	0 0 1/4	0 0 1/4	0 0 1/4	0 4 1/4	0 5 1/4	0 6 1/4	0 7 1/4	0 8 1/4
0 4 0	0 0 1/4	0 0 1/4	0 0 1/4	0 0 1/4	0 0 1/4	0 0 1/4	0 0 1/4	0 0 1/4	0 0 1/4	0 0 1/4	0 4 1/4	0 6 1/4	0 7 1/4	0 8 1/4	0 9 1/4
0 5 0	0 0 1/4	0 0 1/4	0 0 1/4	0 0 1/4	0 0 1/4	0 0 1/4	0 0 1/4	0 0 1/4	0 0 1/4	0 0 1/4	0 6 1/4	0 7 1/4	0 9 1/4	0 10 1/4	1 0
0 7 6	0 0 1/4	0 0 1/4	0 0 1/4	0 0 1/4	0 0 1/4	0 0 1/4	0 0 1/4	0 0 1/4	0 0 1/4	0 0 1/4	0 9 1/4	0 11 1/4	1 1 1/4	1 3 1/4	1 6
0 10 0	0 0 1/4	0 0 1/4	0 0 1/4	0 0 1/4	0 0 1/4	0 0 1/4	0 0 1/4	0 0 1/4	0 0 1/4	0 0 1/4	1 0	1 3 1/4	1 6	1 9	2 0
0 12 6	0 0 1/4	0 0 1/4	0 0 1/4	0 0 1/4	0 0 1/4	0 0 1/4	0 0 1/4	0 0 1/4	0 0 1/4	0 0 1/4	1 0 1/4	1 3 1/4	1 6 1/4	1 10 1/4	2 6
0 15 0	0 0 1/4	0 0 1/4	0 0 1/4	0 0 1/4	0 0 1/4	0 0 1/4	0 0 1/4	0 0 1/4	0 0 1/4	0 0 1/4	1 0 1/4	1 6 1/4	1 10 1/4	2 3 1/4	2 7 1/4
0 17 6	0 0 1/4	0 0 1/4	0 0 1/4	0 0 1/4	0 0 1/4	0 0 1/4	0 0 1/4	0 0 1/4	0 0 1/4	0 0 1/4	1 0 1/4	1 6 1/4	1 10 1/4	2 3 1/4	2 7 1/4
1 0 0	0 2 1/4	0 3	0 3 1/4	0 4 1/4	0 6	0 9 1/4	1 0	1 2 1/4	1 4 1/4	1 6	2 0	2 6	3 0	3 6	4 0
2 0 0	0 4 1/4	0 6	0 7	0 9 1/4	1 0	1 7	2 0	2 4 1/4	2 9 1/4	3 0	4 0	5 0	6 0	7 0	8 0
3 0 0	0 7	0 9	0 10 1/4	1 2 1/4	1 6	2 4 1/4	3 0	3 7	4 2 1/4	4 6	6 0	7 6	9 0	10 6	12 0
4 0 0	0 9 1/4	1 0	1 2 1/4	1 7	2 0	3 2 1/4	4 0	4 9 1/4	5 7	6 0	8 0	10 0	12 0	14 0	16 0
5 0 0	1 0	1 3	1 6	2 0	2 6	4 0	5 0	6 0	7 0	7 6	10 0	12 6	15 0	17 6	20 0
10 0 0	2 0	2 6	3 0	4 0	5 0	8 0	10 0	12 0	14 0	15 0	20 0	25 0	30 0	35 0	40 0

To find the discount or commission on any amount, look under the required percentage, and in a line with the sum; and the amount sought for will be found. Thus, to find 5 per cent. on three shillings, look in the column headed 5 per cent., and in a line with 3s the sum of 1 1/2d. will be found, being the amount required.

JANUARY, 1920.—1st Week.

1 Thursday (1-365) Circumcision.

making shoes
+ Mr. H. J. Pyle, 2 hrs. repair car
in work

7 hrs

2 Friday (2-364)

✓ Mr. H. J. Pyle, repair car
in work

7 hrs.

3 Saturday (3-363)

✓ Mr. F. Stamp, 3 hrs. put new
casting on car drag
Lorry, plus drag shoe chain 1 1/2 hrs

JANUARY, 1920.—2nd Week.

4 Sunday (4-362) 2nd after Christmas.

5 Monday (5-361)

Self 2 shoes 1 hr.
Lorry ironwork 3 hrs.
+ Mr. H. J. Pyle, repair cart work 4 1/2 hrs.

6 Tuesday (6-360) Epiphany.

+ Mr. H. J. Pyle, repair cart ironwork 7 1/2 hrs.

7 Wednesday (7-359)

+ Mr. R. Pyne, 1 large washer 17/8 x 3/4
fit on drill collar 1 1/2 hrs.
+ Dr. Hulford, 2 nuts on carriage wheel 1/2 hr.
+ Mr. H. J. Pyle, cart ironwork 5 1/2 hrs.

JANUARY, 1920.—2nd Week.

8 Thursday (8-358) *Cambridge Lent Term begins.*

+ Mr. H. J. Pyle, ear work 7 hrs.
mark bee, 2 rivets in paw
handle

6

9 Friday (9-357) *Fire Insurance expires.*

7 1/2 hrs. cut off sweeper

10 Saturday (10-356)

Mr. G. Tarr, repair fork 1 hour

1 0

Mr. B. Burden, sharp trowel

6

X Polle 2 stars. (Skinner) repair
grate 2 hrs.

2 0

Mr. F. Sellick, alter pen the 2 hrs.

9

X Mr. H. J. Pyle, new iron for ear 15 lbs
28 rivets

JANUARY, 1920.—3rd Week.

11 Sunday (11-355) 1st after Epiphany.

12 Monday (12-354) Hilary Law Sittings begin.

Self solder 3 pans
Mr. & Bunker, sharp, woodill . 6
Mr. R. Pyle, repair ballboard iron
3 rivets, cut tyre 1 1/2 hrs
Lorry alter lade eye & hook 1 hr.
+ Mr. H. J. Pyle, cast ironwork 4 hrs

7 1/2 hrs.

13 Tuesday (13-353)

+ Mr. H. J. Pyle, cast ironwork 4 hrs
Self 2 shoes horse
Mr. C. Stamp solder pan 1/2 hr
x Mr. R. Pyle, put feet on horsehoe 2 1/2 hrs - 9

7 1/2 hrs.

14 Wednesday (14-352) Oxford Lent Term begins.

x Mr. R. Pyle, fit horsehoe feet 2 1/2 hrs.
x Mr. W. Sage, making 4 bolts &
screwing 1 1/2 hrs.
Mr. H. Stokes, repair sweepers 3/4 hrs.

7 1/2 hrs.

JANUARY, 1920.—3rd Week.

15 Thursday (15-351)

X Mr. R. Fife typing 1 wheel 4 1/2 yrs 1 1 0
 Mr. Goldring, new wheel type 28 lbs. 9

16 Friday (16-350)

Ben Newton, ironing paid 6
 W. Marks, solder bucket 6
 Repair harness cutter & rake

17 Saturday (17-349)

X Mr. S. Marks buying pick paid 2 6
 Mr. H. J. Fife, screwing bolt etc.
 Repair Horse Rake

JANUARY, 1920.—4th Week.

18 Sunday (18-348) 2nd after Epiphany.

19 Monday (19-347)

Self solder kettle, 4 pans & tin
Self repair horse rake make tools

7 1/2 hrs

20 Tuesday (20-346)

+ District Council (Cannon Walls) 2 bolts
7 plates etc. 4 1/2 lbs
4 spikes
making shoes

7 1/2 hrs

21 Wednesday (21-345)

+ District Council (Creamery) 3 bolts &
washer & 4 spikes 9 lbs.
help load manure

7 1/2 hrs

JANUARY, 1920.—4th Week.

22 Thursday (22-344)

Making stock manure &
loading manure

7½ hr.

23 Friday (23-343)

Throwing manure in Holland's field

7½ hr.

24 Saturday (24-342)

Throwing manure in Holland's field

4 hr.

JANUARY, 1920.—5th Week.

25 Sunday (25-341) 3rd after Epiphany.

26 Monday (26-340)

- x Mr. W. Sage, 1 staple for draft
- Self 2 shoes on horse
- + Mr. H. J. Pyle, 4 plates for hullboard
+ lip iron
- x District Council, 4 square staples
6. 5" bolts for piles

27 Tuesday (27-339)

- x District Council, 2 hooks & 2 units
for wicker gate 12 lbs
- Repairing hayrack

28 Wednesday (28-338)

- | | | |
|----------------------------------|------|-----|
| Mr. B. Shump, 2 shoes cow | paid | 4 0 |
| Mrs. Holland, solder kettle | paid | . 3 |
| Mr. Tom Lee, 3 rivets in fork | | |
| x Mr. R. Tyne, 2 new draft clips | | |

JANUARY, 1920.—5th Week.

29 Thursday (29-337)

Finishing drop clips & nails 1 hr
making shoes

30 Friday (30-336)

Dog trap, altering steps 1 hour
making gate ironwork

31 Saturday (31-335)

Keep Hawkins, clear up straw rack 3 hr
making gate ironwork 1 hr

FEBRUARY, 1920.—6th Week.

1 Sunday (32-334) *Septuagesima.*

2 Monday (33-333) *Purification of B.V. Mary.*

Repair horse rake

3 Tuesday (34-332)

X Mrs. Lock solder kettle

paid

3

Mr. S. G. Miller, 4 books for
doors 8 lbs.

4 Wednesday (35-331)

X Mr. S. G. Miller, making books 1 1/2 lbs.

+ Jamieson Bros. 1 window square

3 1/2 lbs. 3 1/2 lbs. 1/9 3/6

Self 2 shoes on horse

5 3

FEBRUARY, 1920.—6th Week.

5 Thursday (36-330)

X R. D. Council, straightening
bar 1 hr.
Cutting type 2 hr. Gibbons
making teeth for horse rake 6 hrs.

6 Friday (37-329)

Mr. T. Lee, sharp mobile	paid	6
Mr. C. Stamp do.	paid	6
B. Newton, sharp mobile	paid	6
Fitting rake r.		

7 Saturday (38-328)

X Mr. J. Gibbons, turning wheel 3 1/2 hr.
X Mr. F. Stamp, fixing stand,
1 casting for plate 1/2 hr.

FEBRUARY, 1920.—7th Week.

8 Sunday (39-327) *Sexagesima. Half Quarter Day.*

9 Monday (40-326)
Farnigden Bridges 9 hrs
P.D.C.

10 Tuesday (41-325)
Farnigden Bridges 9 hrs
P.D.C.

11 Wednesday (42-324)

Mr. Best Stump. 4 shoes on mare pd 10 0
Molly mare 1 shoe, 1 remove
making spikes R for pluck

FEBRUARY, 1920.—7th Week.

12 Thursday (43-323)
+ Fanningdon Bridges 9 hrs
R.D.C.

13 Friday (44-322)
+ Col. Mardon, 7 1/2 hrs. fix fence
+ Mr. J. Handford, sharp mallet
making stock 6

14 Saturday (45-321)
+ Col. Mardon, 5 1/2 hrs. fix fence

FEBRUARY, 1920.—8th Week.

15 Sunday (46-320) *Quinquagesima.*

X 16 Monday (47-319) *St*
Col. Marden. 9 hrs. fit fence

Δ 17 Tuesday (48-318) *Shrove Tuesday.*
Col. Marden 9 hrs. fit fence

X 18 Wednesday (49-317) *Ash Wednesday.*
Col. Marden. 7 1/2 hrs. fit fence
Mr. Bestamp, 2 shoes in cob paid

4 e

FEBRUARY, 1920. 8th Week.

19 Thursday (50-316)

X Col. Mardon. fix fence gln.

20 Friday (51-315)

Self 4 photos on Pamy

X Mr. J. Glanville, cutting tyres

R. D. Camille sign post 2 bolts
6 1/2 x 1/2

C. Stamp, solder kettle paid 6

Self solder pan

Reve ironwork 3 1/2 hrs.

21 Saturday (52-314)

Reve ironwork 5 1/2 hrs.

FEBRUARY, 1920.—9th Week.

22 Sunday (53-313) 1st in Lent.

23 Monday (54-312)

	Mrs. Perry 1 shov	paid	20
X	Mr. B Stamp. 1 link in plough chain		
X	Mr. Stubbs making iron bar		10
	making Rewe ironwork		

24 Tuesday (55-311) S. Matthias.

making Rewe ironwork

25 Wednesday (56-310) Ember Day.

X	R.D.C. 2. $6\frac{1}{2} + \frac{1}{2}$ bolts		
	Self new screw for plough clip		
	Keep pitch headstone $\frac{1}{2}$ lb.		
	making Rewe ironwork		

FEBRUARY, 1920.—9th Week.

26 Thursday (57-309)

Making Rewe ironwork

27 Friday (58-308) *Ember Day.*

Mrs Perry 2 shoes

Self make strap plate for
root house door 1 hr.

Making shoes

Making Rewe ironwork

40

28 Saturday (59-307) *Ember Day.*

Turning up & shooting
3 types

FEB. & MAR., 1920.—10th Week.

29 Sunday (60-306) 2nd in Lent.

MARCH—1 Monday (61-305) S. David's Day.

Mr. B. Stamp 2 plows on col- paid

Mr. F. Sellick sharp mobile

X Mr. J. Gleanwell, 2 tires 100 lbs.

X Mr. S. Cornick, 1yring 1 wheel

40
6

2 Tuesday (62-304)

X Col. Marden, 9 hrs. fix wire fence

3 Wednesday (63-303)

X Col. Marden, 9 hrs. fix wire fence

MARCH, 1920.—10th Week.

4 Thursday (64-302)

- X Mr. B Stamp. 3 links in chain
- X Mr. J. Pyne. repair pit trap steps
- X Mr. Stubbs. lying colder 2hr.
- Mr. Stokes. 2 cart wangs
- X Col. Marden. 1½ hr. fixing wire fence

30

5 Friday (65-301)

- X Mr. J. Pyne tyre no good bursted
- R.D. Council, making squares for
van

6 Saturday (66-300)

- X R.D. Council 4 squares for van 34lbs.
- ½ hr. make wire stand } 3/-
- 6lbs. iron

MARCH, 1920.—11th Week.

7 Sunday (67-299) 3rd in Lent.

8 Monday (68-298)

- making shoes 2hr
- X R. District Council, drilling 4 squares 3½hr
- Mr. J. Pye, repair wheel bolt ½hr
- making drag tines 3hr.
- Mr. H. Hill, repair 3 gate eyes paid . 6

9 Tuesday (69-297)

- X Mr. J. Pye, new tyre on trap wheel 30 lbs. 2½hr.
- X Mr. Stubbs, repair plough clip 2hr.
- making drag tines 4½hr.

10 Wednesday (70-296)

- Self 2 shoes on horse
- X Mr. H. Ware B. Hawkins, laying pick almost make new one paid 30
- making drag tines
- X Mr. B. Stamp, 1. K. 3 plough shear ①

MARCH, 1920.—11th Week.

11 Thursday (71-295)

X Mr. R. Pyne 4 small squares for
trap

R. District Council, repair handle &
catch of door $\frac{1}{2}$ hr.
making & repairing lines

20

12 Friday (72-294)

X Mr. B Stamp, repair plough
clip $\frac{1}{2}$ hr.

.. lying cutter
Screwing drag lines

20

40

13 Saturday (73-293)

X Mr. R. Pyne. 1 T. bolt for plough
making & screwing drag lines

9

MARCH, 1920.—12th Week.

14 Sunday (74-292) 4th in Lent.

15 Monday (75-291)

X Jarman Bros. 2 bolts & 4 plates for
Public Hall bks.
making drag

60

16 Tuesday (76-290)

0.2
0.4
Col. Mardon. q. l. n. fix wire netting
fence against Orchard

17 Wednesday (77-289) S. Patrick's Day.

X Col. Mardon. q. l. n. fix wire netting
fence against Orchard

MARCH, 1920.—12th Week.

18 Thursday (78-288)

X Col. Marden. 7 1/2 hrs fix netting
fence against Orchard
Self 2 places on horse

19 Friday (79-287)

X Col. Marden. 3 1/2 hrs fix fence
making drag in work. 5 1/2 hrs.
Mr. P. West. turning digger
X Mr. B. Stamp. 1 link in chain

10
4

20 Saturday (80-286)

Picking over potatoes

MARCH, 1920.—13th Week.

21 Sunday (81-285) 5th in Lent.

22 Monday (82-284)

Mr. W. Stamp 4 $\frac{1}{2}$ hrs. take down
pick over ^{put} ~~put~~ ^{house} ~~house~~
Pick over ~~house~~ 4 $\frac{1}{2}$ hrs.

23 Tuesday (83-283)

C. Stamp. repair a/c head 1 hr. 10

24 Wednesday (84-282)

Repair car harness, new D & 2 keys
for Seep
X Mr. J. C. C. lying collar
X Mr. W. Sage repair 2 post board
inns of traps & 1 new square 30

MARCH, 1920.—13th Week.

25 Thursday (85-281) *Annunciation B.V. Mary.*
Lady Day.

Self new halter bit & ring
do. 1 pair sharp wangs
do. making hames crooks

26 Friday (86-280)

Self repair hames 5½ hrs
Shooting tyres 3½ hrs

27 Saturday (87-279) *Cambridge Lent Term ends.*
Oxford Lent Term ends.

+ Mr. W. Sage, put on 2, 1½" tyres
+ Mr. F. Stamp, put on 2, 2½" car
tyres

MARCH, 1920.—14th Week.

28 Sunday (88-278) *Palm Sunday.*

29 Monday (89-277) *Monday before Easter.*

Making nails for wheel 1 hr.
Self 2 links in harness
W. Miller sharp pick
X Mr. W. Sage repair iron outcrop 4 hrs
X Mr. J. Cornish, 2 hrs, about roller

30 Tuesday (90-276) *Tuesday before Easter.*

X Mr. J. Cornish 5 hrs about gudgeon
making shoes 3 hrs

31 Wednesday (91-275) *Wednesday before Easter.*
Hilary Law Sittings end.

X Mr. W. Stamp, 4 hrs take down wire
fence

APRIL, 1920 — 14th Week.

1 Thursday (92-274) *Thursday before Easter.*

X Mr. W Stamp. glass take down
pence

2 Friday (93-273) *Good Friday.*

3 Saturday (94-272) *Easter Eve.*

Mr B. Stamp. 2 shoes on cork paid 4 0

X Mr. A. Stamp. make 2 pegs for
trap seat 2 0

Mr. Radford. sharp insill

H. Leach. turn fork paid 6

Self solder kettle & 2 pans

APRIL, 1920.—15th Week.

4 Sunday (95-271) *Easter Day.*

5 Monday (96-270) *Easter Monday.*

6 Tuesday (97-269) *Easter Tuesday.*

X Col. Marden. 2 hawks, pair staples for
: barrow bands
: 2 eyes for wheel

+ Mr. J. Handford. sharp pick
making inverte for stock

7 Wednesday (98-268) *Oxford Easter Term begins.*

~~Mr. S. Cornish~~

X Mr. W. Stubbs 5' in. about roller

X Mr. R. Pye. 8 drop staples

— Sellick, sharp 2 hammer paid
making stock

APRIL, 1920.—15th Week.

8 Thursday (99-267)

X Mr. T. Smith ship pick paid
Mr. Stubbs, 7 hrs. about roller
making stock

6

9 Friday (100-266) Fire Insurance expires.

X Polle take. (Skinner) 2 plate dowl.

T. Radford alter digger paid

X Mr. Stubbs, new spill 6 lbs.

wedges 3 lbs.

lead 1½ lbs.

1 bolt

time 4½ hrs.

Self 2 shoes remove on Col.

X Mr. Cornish about roller 2½ hrs.

4

10 Saturday (101-265)

X Mr. Cornish, put in spill + repair
inward of shafts 5½ hrs.

3 lbs. lead

2 lbs. wedges

APRIL, 1920.—16th Week.

11 Sunday (102-264) 1st after Easter. Low Sunday.

12 Monday (103-263)

X Mr. W. Stamp, 2 hrs. fetch fencing
X Mr. S. Cornish, 7½ hrs. repair roller
ironwork

13 Tuesday (104-262) Easter Law Sittings begin.

X Mr. Cornish, 2 links & 4 bolts 3 hrs.

X Col. Mardon, 2 hrs. about garden
roller

X Mr. F. Stamp 4 hrs. make plate for
cart shaft. 2 new ends for
tips iron, & 1 new 12 x ½
bolt for axle

14 Wednesday (105-261)

X Mrs. Stokes, Serr. solder dish

X Col. Mardon, repair gate. 2 eyes
2 plates 2 lbs. 2 staples 5 hrs.

X Mr. W. Stamp, 4 hrs. repair fence
stands

4

APRIL, 1920.—16th Week.

15 Thursday (106-260)

- X Mr. W. Stamp, take off bullock chains 1 hr.
- X do. repair fence stands 7 hrs.
- X Mr. S. Cornish, make 4 bolt-racks 2, 1 1/2 hrs.
- Mr. Stubbs, jr. screw bolt-racks paid 6

16 Friday (107-259)

- Self, 2 staples for spreader making drags 5 hrs.
 - Mr. Cornish, 2, 6 x 1/2 bolts, 4 staples, 2 new crooks, 4 links, repair shaft ironwork (making 4 stays on iron) 1 1/2 hrs.
 - X Mr. W. Stamp repair chains 2 hrs.
 - X " 1 new strainer 1 hr.
- ironwork used altogether

17 Saturday (108-258)

- X Mr. R. Pile, 1 long staple & repair shaft iron 1 1/2 hrs.
- making drags 4 hrs.

APRIL, 1920.—17th Week.

18 Sunday (109-257) 2nd after Easter.

Cambridge Easter Term begins.

19 Monday (110-256)

Making drags 8 hrs
Packing timber 1 hr.
Mr. P. Stamp sharp pick

- 6

20 Tuesday (111-255)

Mr. W. Stamp, put up stile 1 hr.
Cutting types 1 hr.
making drags 7 hrs.

21 Wednesday (112-254)

Mr. W. Stamp, put up stile 9 hrs.

APRIL, 1920.—17th Week.

22 Thursday (113-253)

X Mr. W. Stamp. fix fencing 4 hrs.
Mr. B. Stamp. 2 shoes mch paid
Self 2 shoes on pony
" 1 crook & 1 link
making drags 2 hrs.

k c

23 Friday (114-252) S. George's Day.

+ Mr. W. Stamp 9 hrs. fencing

24 Saturday (115-251)

+ Mr. W. Stamp, 9 hrs. fencing

APRIL, 1920.—18th Week.

25 Sunday (116-250) 3rd after Easter. S. Mark, Evan.

26 Monday (117-249)

X Mr. W Stamp. 9 hr. fencing

27 Tuesday (118-248)

X Mr. W Stamp. 9 hr. fencing

28 Wednesday (119-247)

X Mr. W Stamp 1 1/2 hr. fencing
Dr. Darbyshire, 1 hr. pet. see the
X Skinner's Cottage. 1 staple
idring catch

paid

10

APRIL & MAY, 1920.—18th Week.

29 Thursday (120-246)

✓ Mr. Stamp, 9 hr. fencing

30 Friday (121-245)

✓ Mr. Stamp, 5 1/2 hr. fencing
✓ Mr. Handford, plan, pick
See about drage 3 hr.

. 6

MAY—1 Saturday (122-244) SS. Philip and James.

✓ Make drage 4 1/2 hr.
Skinner's Cottage, 4 holdfast.
for W.C. James 2 1/2 hr. 1 hr.

MAY, 1920.—19th Week.

2 Sunday (123-243) 4th after Easter.

3 Monday (124-242)

X Mr. B Stamp. 4 shoes paid 10 0
Mr. F Stamp 1 1/2 lbs. about Cym
making drag
Hawker, Mr. screw bolts of wheel paid

4 Tuesday (125-241)

X Mr. F Stamp. 2. 2 1/4 + 5/8 + 1/4 lbs
117 lbs

5 Wednesday (126-240)

X making drag
Mr. J. Pyne. 1 plate. 1 pair r
staple for cheese press
2 lbs. 4 lbs.

MAY, 1920.—19th Week.

6 Thursday (127-239)

X
X

Mr. J. Handford sharp picks
Skinners Collage. 1 new hook &
repair 1 wrist 2 lbs.
make drags

6

7 Friday (128-238)

+

Self 4 pieces on army horse
Col. Marden. 2 pig pencils
hooks & 2 catches 5 lbs. 5 lbs.
making drags 2 1/2 1 1/2

9 0

8 Saturday (129-237)

X

Mr. J. Miller repair iron of
wagon 2 1/2 lbs.
making drags

Rewe Gudgeon Stupler 15 lbs.

MAY, 1920.—20th Week.

9 Sunday (130-236) Rogation Sunday.
Half Quarter Day.

10 Monday (131-235) Rogation Day.

X Mr. S. Miller repair 3 waggons
rods $\frac{1}{2}$ hr.
making drag 8 hrs.

11 Tuesday (132-234) Rogation Day.

Shoed 4 shoes on horse
making drag 8 hrs.

12 Wednesday (133-233) Rogation Day.

X Mr. S. G. Miller. 2 tyres $1\frac{3}{4} \times 9\frac{1}{8}$
47 lbs.
do. fitting nut to bolt $\frac{1}{2}$ hr.

MAY, 1920.—20th Week.

13 Thursday (134-232) Ascension Day.

not to work

14 Friday (135-231)

X Mr. J. Handford lying pick
to fix headline
making drag

15 Saturday (136-230)

making drag

MAY, 1920.—21st Week.

16 Sunday (137-229) *Sunday after Ascension Day.*

17 Monday (138-228)

Self Solder 4 pans 1 hr.
 .. screening bbls
 .. 4 shoes on pony

late skinner 1 each. guide 1 each 2 lbs.

Mr. S. G. Miller alters 2 steps + repair
 sharp plate 1 hr

Mr. H. Knott, 1 spoke plate, inner faying paid 2 6

Mr. J. Handford, repair pick 1 0

Johns pick 6

Mr. J. Pyne, lying cutter

18 Tuesday (139-227)

Self, repair plough after fix wheel 3 hrs.

Mr. B. Stamp, repair drag of
 drag 4 hrs - 5 - 2 lbs. in 6 0

Mr. H. Glanville, 1 1/2 hrs. repair
 fire dog

19 Wednesday (140-226)

Mr. H. Glanville, repair fire dog
 1 1/2 hrs. in 10 lbs.

Mr. J. Pyne, 1 new land vice, 2 bolts
 + 1 key for plough 2 hrs

Self fitting new drag draft, 5 hrs

Mr. H. Knott 2 scythe wedges paid - 9

MAY, 1920.—21st Week.

20 Thursday (141-225)

+ Mr. R. Pye. 4-rings & piping 4
" dung forks
" 4 ash fork handles 4 lbs.
+ See 1 link in foot chain
+ Col. Mardon. 4 1/2 hrs. make wedges

21 Friday (142-224) Oxford Easter Term ends.
Easter Law Sittings end.

+ Col. Mardon. 1 1/2 hrs. make wedges
- 4 wedge 16 lbs. iron
Mrs Miller. 1 hr. fit up
spring couplings
" 8 shackle plate
" 8 bolts
make up & repair tools

22. Saturday (143-223) Oxford Trinity Term begins.
Pick over potatoes

MAY, 1920.—22nd Week.

23 Sunday (144-222) *Whit Sunday.*

24 Monday (145-221) *Whit Monday. Empire Day.*

~~Mr. F. S.~~

25 Tuesday (146-220) *Whit Tuesday.*

Mr. F. Stamp, repair pit roller
gudgen 3lb. iron, 2 lb. lead
+ drilling hole 8 in.

Mr. J. Handford, sharp pick
Mr. C. Stamp, sharp digger

12 3

26 Wednesday (147-219) *Ember Day.*

Mr. T. Radford, sharp huf matmek paid
Mr. S. Hawkins, 2 huf parts
Mr. S. Miller, sharp wagger slay
+ rivet it in
Painting drags

. 6

4

MAY, 1920.—22nd Week.

27 Thursday (148-218)

Mr. T. Short sharp mallet paid - 6
Mr. S. Miller, 2 brake plates
7 lbs. 4 lbs.
Painting drags

28 Friday (149-217) Ember Day.

Mr. Z. Stamp cutting 24 lbs 7/4 lbs
Mr. W. Claude do. 3/4 lbs
Mr. C. Davy, making iron squares 7 lbs.

29 Saturday (150-216) Ember Day.

Mr. C. Davy, making iron squares 4 lbs.
Mr. W. Miller laying pick 2 6
" setting shovel 6

MAY & JUNE, 1920.—23rd Week.

30 Sunday (151-215) *Trinity Sunday.*

31 Monday (152-214)

+	Mr. W. Stanville, repair front iron of trap & 3 bolts	3 hr.	39
	iron		-6
	W Radford sharp pick	paid	6
	Mr. Davy, 8 squares & 6 wedges		
+	27 lbs.	5 hr.	
	Self, 2 shoes on pony		

JUNE—1 Tuesday (153-213) *Trinity Law Sittings begin.*

Self, lying cooler
2 mg. & 2 S for harness
Painting our drag

2 Wednesday (154-212)

X Mr. F. Stamp & dovele 2 lbs. for wheel making staples
Repair draft of chain harness

JUNE, 1920.—23rd Week.

3 Thursday (155-211) Corpus Christi.

+	Mr. C. Davy. 1 stay for pipe	10
+	" 2 pieces iron & 1 screw to stop up hole in cistern	10
+	Mr. C. Davy. help fix pipe 7 hrs.	

4 Friday (156-210)

J. H.	making new pick 5 $\frac{1}{2}$ hrs.	} 12/6	
	Self help 1 $\frac{1}{2}$ hrs.		
	9 $\frac{1}{2}$ lbs. iron		
	Mr. Radford sharp hatchet	paid	6
	C. Stamp mend saucepan		6
	make chain harrow		

5 Saturday (157-209)

+	Mr. C. Davy. 1 staple	
+	" 5 $\frac{1}{2}$ hrs. help about pipes	

JUNE, 1920.—24th Week.

6 Sunday (158-208) 1st after Trinity.

7 Monday (159-207)

X Polle Estate, repairing stove at
Mr. Horns, 8⁴⁵/₂ hrs.
new top plate complete
4 screws, 2 plates
Mrs. Gooding, solder kettle 2 hrs.

8 Tuesday (160-206)

X Mr. J. Tyne, repair horse rack
7¹/₂ hrs.
X Mr. W. Stamp, 2 squares 16
2 plates 16
2 staples 3
X Mr. F. Stamp, tying horse box post

9 Wednesday (161-205)

Mr. B. Stamp, 4 shoes Cob paid 10 0
Cutting re-shooting eyes

JUNE, 1920.—24th Week.

10 Thursday (162-204)

Mr. Miller, solder Kettle
See new spill for pump
+ Col. Mardon. 3 scythe wedges
Showing type
X Mr. J. Handford sharp pick

6

11 Friday (163-203) S. Barnabas.

X Mr. J. Glanville, cut short 1 small
wheel type $2\frac{1}{2}$ "
X Mr. W. Glanville, type 2 trap wheels $1\frac{1}{2}$ "
" short piece in 1 type
+ Mr. F. Stamp, 2 $2\frac{1}{2} \times 5/8$ types 140 lbs
X Mr. G. Pyne, type 2 wheels $1\frac{1}{2}$ "

12 Saturday (164-202)

Burrington 4 stock bolts, 10 lbs
hauling wheels 15.

126

JUNE, 1920.—25th Week.

13 Sunday (165-201) 2nd after Trinity.

14 Monday (166-200)

- X Mr. W. Jarnan lying matlock
- X Ware house. 2 brake blocks 5 lbs. 2 1/2 hrs
- X Mr. F. Stamp. lying horse live foot 1 1/2 hrs.
- X Mr. G. Rye river 2 wheels 1 1/2 hrs.
- 20 rivets
- X Mr. F. Stamp. drill 2 new tyres 2 hrs.

26

15 Tuesday (167-199)

- X Mr. F. Stamp. nail 2 wheels 1 hr.
- X Mr. W. G. Smith nailing wheel 1/2 hr.
- Self new links for foot chain
- Mr. W. Lindsey, repair foot 1 1/4 hrs.
- X Mr. Cornish, cut 2 tyres
- put on shock bands 1 hr.
- Mr. T. Lee put handle in hook
- Self 4 removers on Army horse

16

6

16 Wednesday (168-198)

- Self 2 shoes 1 hr.
- X Mr. F. Stamp. repair draft 2 new bolts. 4 nuts & washers. piece iron 2 hrs
- X S. Cole's sharp matlock 1/2 hr.
- X Mr. Stamp. take down foot horse 1 hr.

40
6

JUNE, 1920.—25th Week.

17 Thursday (169-197)

X Mr. C. Summerfield help plumber 1 1/2 hrs.
X Mr. Handford chair pick
Repair our horse shoe 7 hrs

6

18 Friday (170-196)

Self repair horse shoe 1 1/2 hrs.
+ Mr. H Ware take down pipes 4 hrs.
make chain hammer 1 1/2 hrs.
Shooting tyres 2 hrs

19 Saturday (171-195)

+ Mr. H Leach making T 1 1/2 hrs.
6. 1 1/4 screws paid
Preparing tyres & making nails

13

JUNE, 1920.—26th Week.

20 Sunday (172-194) 3rd after Trinity.

21 Monday (173-193) Longest Day.

X Mr. F. Stamp, 2 new tyres 132 lbs
2 1/2 x 5/8

X Mr. Cornish, typing 2 trap wheels
1 1/2 tyres

22 Tuesday (174-192)

X Mr. A. Stamp, typing 2 cart wheels
Dr. Darbyshire, grinding hooks &
shears 2 hrs,
1 bolt in shears

X Self 2 new knives & fixing on
horse hoe

23 Wednesday (175-191)

Self fix knives on horse hoe, then
do. repair 2 boxes & eyes for
gate Miller field, 1 half staple
4 1/2 hrs. hanging gate at Miller field
making nail & nailing wheels

JUNE, 1920.—26th Week.

24 Thursday (176-190) *S. John Baptist.*
Midsummer Day. Cambridge Easter Term ends.

X Rolle Telatz, 2 1/2 hrs. soldering
gutter at Skinners
making chain harrow

25 Friday (177-189)

X Mr. E. Ware, tyreing front
wheel of waggon
making chain harrow

26 Saturday (178-188)

X Mr. Handford shape pick
Mr. A. Stamp. put on cart wheel
Y { hour
making chain harrow

JUNE, 1920.—27th Week.

27 Sunday (179-187) 4th after Trinity.

28 Monday (180-186)

Hoeing potatoes

29 Tuesday (181-185) S. Peter, Ap.

Hoeing potatoes

30 Wednesday (182-184)

Mr. J. Miller heading stone hammer 1⁰⁰
Col. Marden, 2 little rings, & 6 studs
6 lbs. 2⁵⁰

13

See 2 shoes on pony
Mr. B Stamp, 4 shoes on colt paid

120

JULY, 1920.—27th Week.

1 Thursday (183-183)

Self make 4 hinges for trestle
" 2 shoes on horse
" colder 5 milk pans
making chain harrow

2 Friday (184-182)

Self 2 shoes on pony for
make chain harrow

3 Saturday (185-181)

X School Mr. help put on rope
Mr. J. Handford sharp pick
make chain harrow

JULY, 1920.—28th Week.

4 Sunday (186-180) 5th after Trinity.

5 Monday (187-179)

making chain hammer 3hr.
X Mr. F. Stamp, making drag shoe 5½hr.

6 Tuesday (188-178)

+ Mr. J. Handford sharp pick
Stallcombe, help make gates 1½hr.
+ Mr. F. Stamp, making drag shoe 6½hr.

7 Wednesday (189-177)

x Col. Mardon, 6½hr. fix fence
make chain hammer 2hr.

JULY, 1920.—28th Week.

8 Thursday (190-176)

hot-ir work

[Faint handwritten notes, possibly describing work or materials]

9 Friday (191-175) *Fire Insurance expires.*

Mr. H. Ware, 4 bolts, 4 plates,
2 plate nuts, 5 lbs.

+ making drag shoe 3 1/2 hrs

6 3

10 Saturday (192-174) *Oxford Trinity Term ends.*

+ making drag shoe 4 hrs.

30 lbs. iron 10-0

2 wheels 12-9

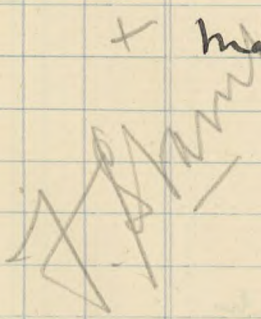
1 cast iron slip 8-0

20 hrs 1-0-0

2-10-9

10

3-0-9



JULY, 1920.—29th Week.

11 Sunday (193-173) 6th after Trinity.

12 Monday (194-172)

X Mr. R. Pyne, making & piping ironwork
on 2 drops. 2 cps. pair &
plates. 4 cups & eyes 12 lbs
9 hrs.

13 Tuesday (195-171)

Self 2 shoes on Tony (John)
C. Stamp, solder kettle
X Mr. R. Pyne, painting drops 1 hr.
X Mr. J. Handford, lying pick
making shoes 1 hr.

7 hrs.

6

14 Wednesday (196-170)

X Mr. H. Ware lying malleable
Cutting type 2 hrs.
making ironwork for stock

36

7 hrs.

JULY, 1920.—29th Week.

15 Thursday (197-169) S. Swithun.

embroider x Col. Martin, 2 hours & 1/2 8 hrs.

1. spring trap.

x Mr. H. J. Pyle, turning 1 pair
waggon wheel 2 1/2 hrs.

Self (Mrs. Pomeroy) piping new
bottom to grate 2 hrs.

making iron work for plow

9 hrs

16 Friday (198-168)

Self 2 plows & 2 removers (army)
making gate ironwork

17 Saturday (199-167)

making gate ironwork

JULY, 1920.—30th Week.

18 Sunday (200-166) 7th after Trinity.

19 Monday (201-165)

Trunk 1 1/2 hrs. hold ladder for house
Self solder pan & bowl
making ironwork for Stallenbe

20 Tuesday (202-164)

Stallenbe. 6 hoops & 12 staples
3 sets gate ironwork 12 lbs.
1 eye without 1 1/2 lbs.
Self Solder kettle
making ironwork 8 hrs.

21 Wednesday (203-163)

Stallenbe ironwork making
Mr. H. Wares ironwork 1 hr.

JULY, 1920.—30th Week.

22 Thursday (204-162)

X Stallemb. 1 fake eye 3 lbs.
 Mr. H. Ware 2 pairs plates, hooks
 X Tins 13 1/2 lbs.
 old pair returned 12 lbs.
1 1/2 lbs.

23 Friday (205-161)

Stallemb. drilling ironwork
 Self Solder kettle
 C-Stamp, solder kettle p.a. 25⁰ 3
 Mr. F-Stamp, get stone scorp. 2
 rivets & drilling 1 6
 Self roll up wire & make
 bonnet for fire place

24 Saturday (206-160)

X Mr. B Stamp. 2 shoes on cols
 making ironwork for Stallemb.
 X Stallemb. 1 hook, 2 eyes & wedges 6 lbs.
 Mr. H. Ware drilling tins 1 hr.
 X Stallemb. 3 pair hooks tins
 4 latches, 4 catches, 4 pins
25 lbs.

JULY, 1920.—31st Week.

25 Sunday (207-159) 8th after Trinity. S. James, Ap.

26 Monday (208-158)

making phone coils

27 Tuesday (209-157)

✓ Stallembe. 2 squares 4 1/2 lbs. 1 1/2 hrs.
✓ T-Shirt per say the 1 hr. pd. 1/2.
X Handpd sharp pick
X Hand Stamp. wrapping up
trap wheels 5 hrs.

13

28 Wednesday (210-156)

✓ Mr. H. Ware. 1 hour clay. 2 chapters
or 1 crock 2 lbs
making inwork for stick

JULY, 1920.—31st Week.

29 Thursday (211-155)

X Mr. Handford, sharp pick
Mr. S. Miller sharp 2 nutbars
Dig potatoes in garden 16

30 Friday (212-154)

X Stalleombe. new caps for gate 2 hr. 30
making chain harrow 3 1/2 hr.
making ironwork for stove
Mr. S. Ware sharp 2 long
staples for tuner 1/2 hr. 10

31 Saturday (213-153) Trinity Law Sittings end.

X Mr. S. Miller, sharp lengthen rod
for ladder 6
making chain harrow

AUGUST, 1920.—32nd Week.

1 Sunday (214-152) 9th after Trinity.

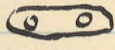
2 Monday (215-151) Bank Holiday.

3 Tuesday (216-150)

- X Stallecker, 4 drop hawks, 8 staples
- X Mr. H. Kurtz, setting steps, mending scroll iron, 1 plate, 7 x 2 1/2 fender plate 4 hrs
- X Mr. B. Stamps cart, 2 links in tip chain + alter 3 eyes 1 1/2 hrs
- making stock ironwork

7 1/2

4 Wednesday (217-149)

- X Mr. Handford, sharp pick
- X Stallecker, repair gate ironwork 4 hrs
- X Mr. W. Stamps, 1 spring coupling 
- X " repair seat iron of trap 2 1/2 hrs
- ill. iron
- making gate ironwork

7 1/2

40

AUGUST, 1920.—32nd Week.

5 Thursday (218-148)

X Mr. S. Miller. 1 gate hook
X Mr. H. Ware. 2 plates of iron
for W.C. seat
X Stallecombe. 1 latch, catch & guide
for gates 2 lbs.
making ironwork for plow 7 1/2

16

6 Friday (219-147)

X Stallecombe. 6. 3/8 bolts & plates 4 lbs
X Dr. Fulford. 1 plate for pump under
Self sharp pick
making ironwork for plow 7 1/2

9

7 Saturday (220-146)

make chain hammer 4 lbs

AUGUST, 1920.—33rd Week.

8 Sunday (221-145) 10th after Trinity.

9 Monday (222-144)

making chain harrows 9 hrs

10 Tuesday (223-143)

~~Stallcomb. 1 gate hook~~
~~.. repair gate work 1 1/2 hrs~~
making chain harrows 4 hrs
making ironwork for stock 3 1/2 hrs

11 Wednesday (224-142) Half Quarter Day.

~~Mr. J. Handford. repair sharp pick~~
~~1 hour~~
making chain harrows 8 hrs

AUGUST, 1920.—33rd Week.

12 Thursday (225-141)

X Mr. B Stamp 2 shoes on cob
making inwork for stock

13 Friday (226-140)

making inwork for stock

14 Saturday (227-139)

Mr W Radford sharp pick paid 6.
Self remove faster shoes on horse

making inwork for stock

f

AUGUST, 1920.—34th Week.

15 Sunday (228-138) 11th after Trinity.

16 Monday (229-137)

Self 2 shoes done

- 2 removed & fasten shoe pump

X Mr. Fitz. Smith, new part to scroll iron
3 lbs. iron 3 hours

X Mr. Handford, sharp pick
making ironwork for clock

17 Tuesday (230-136)

X Mr. Fitz. Smith, fitting scroll iron 1 hr.
making stock iron work

18 Wednesday (231-135)

X Mr. F. Stamp, new plate to
cut steel spring 2 1/2 hrs.
cut iron plate

X Mr. Fitz. Smith fitting 2 bolts
for screw iron 3/4 hr.
making chain hammers

AUGUST, 1920.—34th Week.

19 Thursday (232-134)

- X Mr. H. Knorr setting trap step
+ repair both 3 hrs.
- X Mr. Fitz. Smith, repair both r
2 new couplings 3 hrs.
- X Mr. J. Handford sharp pick
Self repair plough

20 Friday (233-133)

21 Saturday (234-132)

NOVEMBER, 1920.—48th Week.

21 Sunday (326-40) 25th after Trinity.

22 Monday (327-39)

23 Tuesday (328-38)

X Mr. C. Dary, 1 tie bar for gate 5 lbs. $\frac{1}{2}$ hr.
X Mr. S. Miller, 1 breech in cow &
ring to wagon shaft $\frac{1}{2}$ hr.

24 Wednesday (329-37)

X Mr. Stubbs, 1 new plough body
new washer & fly ch pin
piping body 2 $\frac{1}{2}$ hrs.
X Mr. J. Miller, sharpen & straighten
cow bar $\frac{1}{2}$ hr.
X Mr. B. Stamps, cart, repair & screw
3 large bolts, 2 new pins &
split keys, repair & shape
shufles, repair screw & stays
4 rivets

NOVEMBER, 1920.—48th Week.

1.4
63
2.7 1/2

25 Thursday (330-36)

X Mr. B. Stamp, 1 large draft staple }
1 plate or 3 staples }
for double draft. }
2 nails 1 1/2 hrs.

3 5

X Mr. B. Stamp cart, 2 new hanging
eyes, repair 2 stays
& rivets 5 hrs.

10 0

Self 4 shoes on pony

26 Friday (331-35)

making shoes & making gate
hooks & eyes 15

27 Saturday (332-34)

X Mr. S. Miller 9 staples
Repair wind screen for chimney
at Mrs Radford
making staples 15



NOV. & DEC., 1920.—49th Week.

28 Sunday (333-33) Advent Sunday.

29 Monday (334-32)

X Mr. R. Pyne. tying counter 1 1/2 hrs
Mr. B. Stamps cart, new front board
wire & 3 rivets 1 hr.
making cart innwork

2 9

30 Tuesday (335-31) S. Andrew, Ap. S. Andrew's Day.

X Mr. S. Miller. 2 gate hooks &
2 eyes

Self 4 shoes (punched) on horse
making cart innwork

DECEMBER—1 Wednesday (336-30)

Mr. B. Stamps cart. 10 side board
lines, 6 plates, 11 lbs.
4 hooks + 8 staples, & 4 square
staples for sideboards

~~13 9~~
11 01
40

DECEMBER, 1920.—49th Week.

2 Thursday (337-29)

Mr. B. Stamps can
1 hook & staple for traps
" new lip iron complete 16 lbs.

1 3
4 0

3 Friday (338-28)

make cart ironwork

Bought of Mr Lark traps 3/- paid

4 Saturday (339-27)

X Mr. F. Stamp. new catch iron plate

2 rivets full on 1 lb.

Self 1 handle & 1 square staple. "

1 trap & 2 staples for gates

X Romaneigh. fitting clapper 1 lb.

X Mr. Harris new wing board iron 1 lb.

DECEMBER, 1920.—50th Week.

5 Sunday (340-26) 2nd in Advent.

6 Monday (341-25)

X Mr. S. G. Miller, 2 screwed gate hooks
+ 2 screwed eyes nuts + 2
plates 7 lbs. 5 hrs.

X Mr. S. G. Miller, alter fastening to
motor car door. 4 screws 2 hrs.
making gate immune

7 Tuesday (342-24)

Mr. F. Stamps cart making immune

8 Wednesday (343-23)

X Jarman Bros, 6 latches, 6 catches +
6 guides 7 lbs. 6 hrs.

making cart immune

2 1/2
1/9 pages

DECEMBER, 1920.—50th Week.

9 Thursday (344-22)

X Mr. G. Ware, 4 hooks & 4 twists.
15 lbs 1/3

10 Friday (345-21)

X Mr. G. Ware, 2 latches, 2 catches,
2 guides & 2 hooks & 4 staples
4 lbs. 2 1/2 lbs.

6 0

X Mr. G. Ware, 1 plate of iron for barrow
& screwing both 1/2 lb.

1 3.

X Mr. H. Ware, 2, 8' spikes
1. drill
making hooks & twists

11 Saturday (346-20)

X Mr. F. Stamp, 4 shoes
making 8 shoes

12 0

DECEMBER, 1920.—51st Week.

12 Sunday (347-19) 3rd in Advent.

13 Monday (348-18)

- X Mr. Barney, rough 1 horse
- X Jarnan Bros. 1 turning bar
15 lbs. old tire 2 lbs. 6⁰ lb.
- X Jarnan Bros. 1 new latch for oven
door 3 lbs. 3 rivets
- X do. repair post caps 1 lb.

76

14 Tuesday (349-17)

- X Mr. Goss, roughing pony
- X Mr. T. Radford, lying pick
- X Mr. S. Cornick, cut 2 tires
- Self take up 1/2 of sheep rough
making 8 shoes

15 Wednesday (350-16) Ember Day.

- X Mr. F-Stamp, rough 3 horses
- Mr. Burden, alter spade
- Making 6 shoes

6

DECEMBER, 1920.—51st Week.

16 Thursday (351-15)

X	Mr. W. Sage, rough 1 horse		
+	Mr. Bamsey - do.		
X	Mr. H. Glanville - do.	paid	2 0
X	Mr. F. Stamp - 3		
X	Mr. T. Smith, sharp gutter 2 ends	paid	1 0

17 Friday (352-14) Oxford Michaelmas Term ends.
Ember Day.

+	Mr. Bamsey rough 1 horse		
X	Mr. B. Stamp - 1 horse		
X	Mr. F. Stamp - 3 horse		
X	Mr. Gore - 1 pony		
X	Mr. S. Miller, lengthen 1 toll- making cart ironwork		6

18 Saturday (353-13) Ember Day.

X	Mr. F. Stamp rough 2 horses		
X	Mr. S. Coriell, 2 1/2 hrs. make fit 2 stock bonds		
	Sharpening drills		

DECEMBER, 1920.—52nd Week.

19 Sunday (354-12) 4th in Advent.
Cambridge Michaelmas Term ends.

20 Monday (355-11)

Mr. F. Stamp cart, making 2 new
cart hanging hinges nuts & lbs
" 1 link in plate lbs.
2 lbs

Mr. T. Lee, shaper mallet $8\frac{1}{2}$ lbs
paid

6

21 Tuesday (356-10) S. Thomas, Ap.
Michaelmas Law Sittings end.

X Mr. S. Miller, 1 link in skid chain
+ new end on lip jack $1\frac{1}{2}$ hrs.
Mr. F. Stamp cart, put 4 new
ends on bolts 2 hrs.

22 Wednesday (357-9)

X Mr. F. Stamp, 2 shoes
X Mr. S. Cornish, trying 2 trap
wheels
14 nails

DECEMBER, 1920.—52nd Week.

23 Thursday (358-8)

Mr. F. Stamp, cart, making 10
sidelboard stays, screwing 2
eyes. 14 rivets & 2 screwed
stays.
Refacing hammer 1 lb

24 Friday (359-7)

X Mr. F. Stamp, 2 shoes
See 4 shoes on old lines
punched for eyes.

25 Saturday (360-6) Christmas Day.

DECEMBER, 1920.—53rd Week.

26 Sunday (361-5) 1st after Christmas. S. Stephen, M.

27 Monday (362-4) S. John, Evan.

28 Tuesday (363-3) Innocents' Day.

29 Wednesday (364-2)

making car immune Mr F. Stamp
10 lbs

DECEMBER, 1920.—53rd Week.

30 Thursday (365-1)

Making cast iron work Mr. F. Stamp,
6 lbs.

Mr. Fry repair work paid

13

31 Friday (366)

Self 2 large links in lumber
chain $\frac{1}{2}$ lb.

Making cast iron work 5 lbs.

1921

JANUARY—1 Saturday (1-365) Circumcision.

Self lying cooler

Mr. B. Stamp. 4 shoes on cob

JANUARY, 1921.—1st Week.

2 Sunday (2-364) 1st after Christmas.

3 Monday (3-363) 06

Lying scuffle

6 Thursday

Mr. J. Pyne. 3 shoes on cob

Jarman Bros. sharpener 4 cow staples

" 1. 4" ring for do. } 1 hr.

" making 2 door stays

" 2 large staples } 1 hr.

4 Tuesday (4-362)

Mr. Stubbs. 1 shoe on pony

Mr. F. Stamp car. 10 sideboard plates
9 1/2 lbs. 3 hr.

7 Friday

Mr. F. Stamp. 1 large washer for axle

1. 1/2 inch pin 1 hr.

making shoes

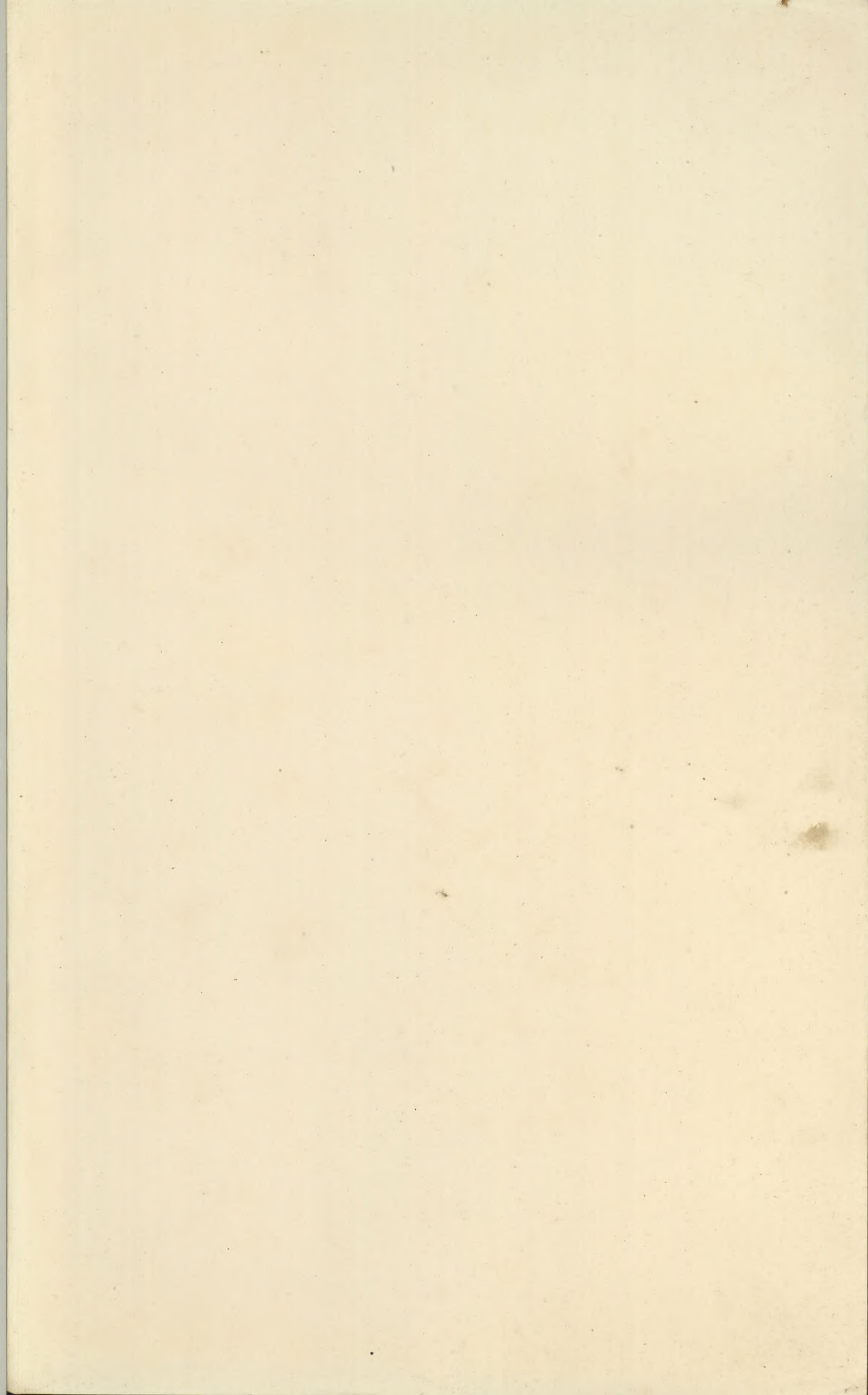
5 Wednesday (5-361)

Mr. A. Stamp. 3 nuts, 2 staples, 1
new end on bolts 1 hr.

Mr. W. Summerfield. new wheelbarrow
eye. 1 hr.

8 Saturday

Mr. Stubbs. 1 shoe on pony
making 4 shoes



T. J. & J. SMITH'S



New "Foreloop" Series

(REGISTERED No. 605491)

POCKET DIARIES

AND NOTE BOOKS

 Prices from 4s. each

FOUND AT ONCE!

T. J. & J. SMITH'S

—AUTOMATIC—
SELF-REGISTERING

Pocket Books & Diaries

FOR ALL SORTS AND
CONDITIONS OF MEN



The pencil held in place by Steel Spring.

The page last written upon immediately found on opening the book, with pencil ready to hand

Prices from 1/6
to 20s. each.

£1,000 Insurance Coupon in each.

Sold by all Booksellers & Stationers