

WOODBURY

Glimpses of the Past

Part 3



Agriculture in 20th Century Woodbury

Compiled from the Woodbury Photographic Archive

By Roger Stokes

2007

£2.50

INTRODUCTION

During the course of producing my book at the Millennium, I was fortunate enough to be able to collect almost 2000 pictures of Woodbury village and Parish life during the 20th Century, and they are still coming in now 6 years later! Some back as far as 1863. All of these photographs were scanned and saved on a computer disc and the originals returned to their owners.

Around 450 of these were used in the original book, and some have been put up on the Woodbury website. However the others have never been seen by people in general. Some have been used on the cover of the Woodbury News, but I have calculated that it would take 166 years to use them all!

It has always been my wish that all the photographs should be printed, as this is the safest way to preserve them, and as many do not have computer facilities I have decided to try to put together a series of booklets over the next few months on the various aspects of village/parish life. For example this booklet is the third in the series and records some of the agricultural images of the 20th Century. Some of the pictures might convey an idyllic type of lifestyle, but it was far from this. Work was hard and constant and all members of the various families, whether young or old, had their part to play. For instance children had to milk the cows before going to school. Having lived through the last 60 years of the century I can assure you that it was NOT idyllic! However, things have certainly changed in those 60 years, not necessarily for the better!

All the booklets are purely in a documentary form of a picture and a caption. To go into a detailed history of everything would be far too great a task in the time I have left! Detailed histories have already been done.

Hopefully some memories will be stirred in some of the "locals", and the more recent residents of the village can be "brought up to speed"!

If anyone still has any old 20th century pictures of people or events that have not been scanned and saved, please contact me. They should not be lost.

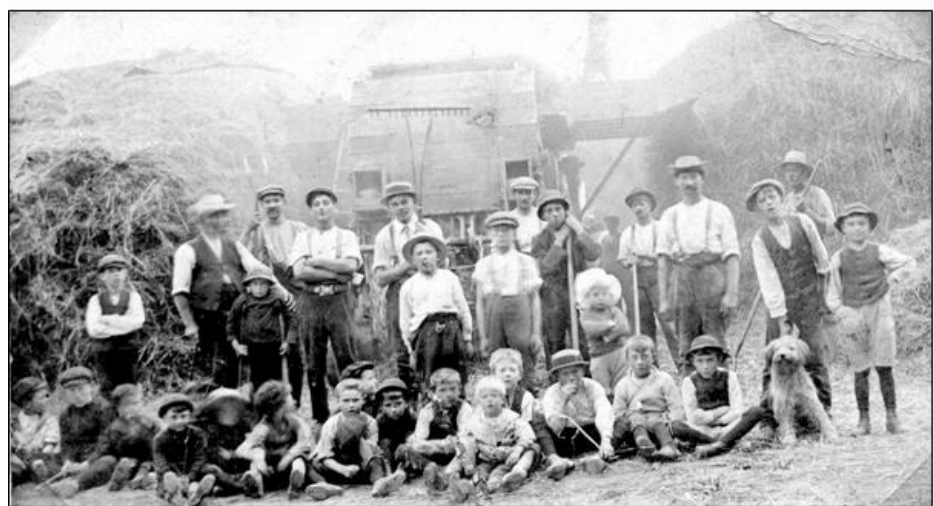
I am indebted to many unknown photographers who have recorded things over the years. Without all of these people there would be no booklet!

Copyright © Roger Stokes 2007

Cover picture: The final farm sale at Woodmanton Farm in the mid 1980's. The end of a 64 year era for Norman Bowles.



Harvesting time at Gillbrook c.1912.



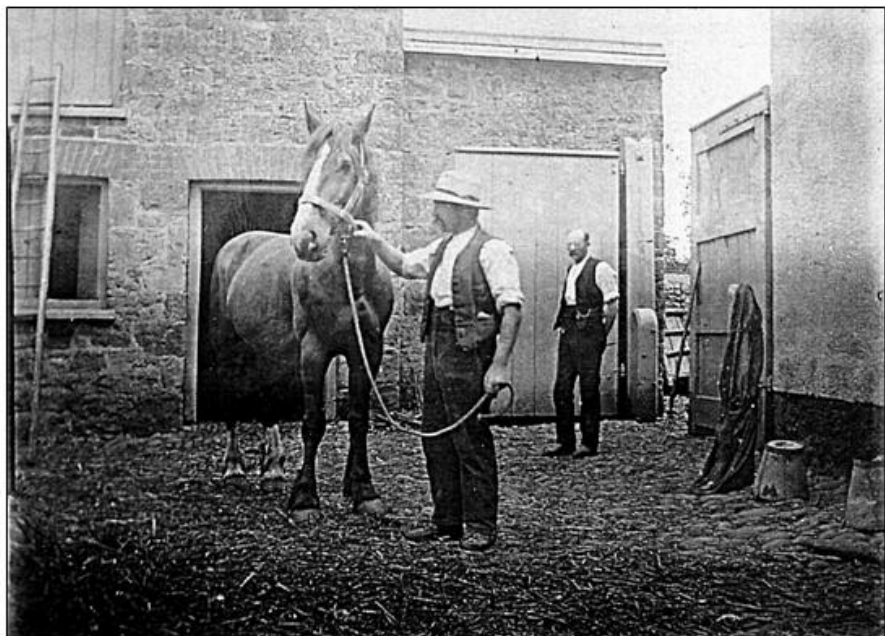
Threshing time at Cornishes Farm around the same time.



The annual haymaking at Gillbrook c.1925 with the fuel to keep them going—plenty of cider, in the jar!

The children all joined in to help. Two of those on the wagon are still “with us” in 2007. They are Esme Ware now Thomson, and Eric Ware.





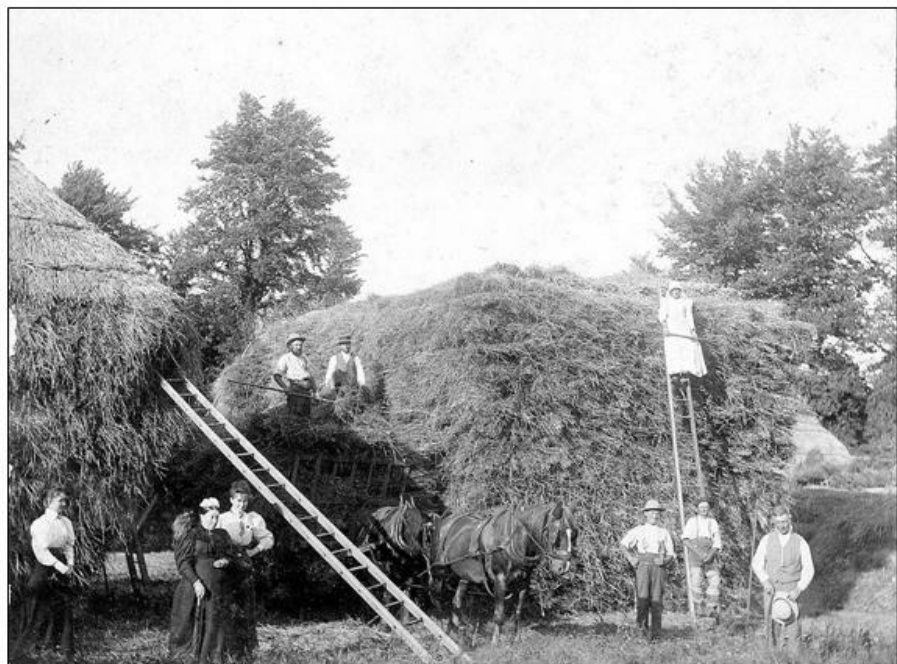
The Havill family at Higher Mallocks bred horses for the army c.1914.



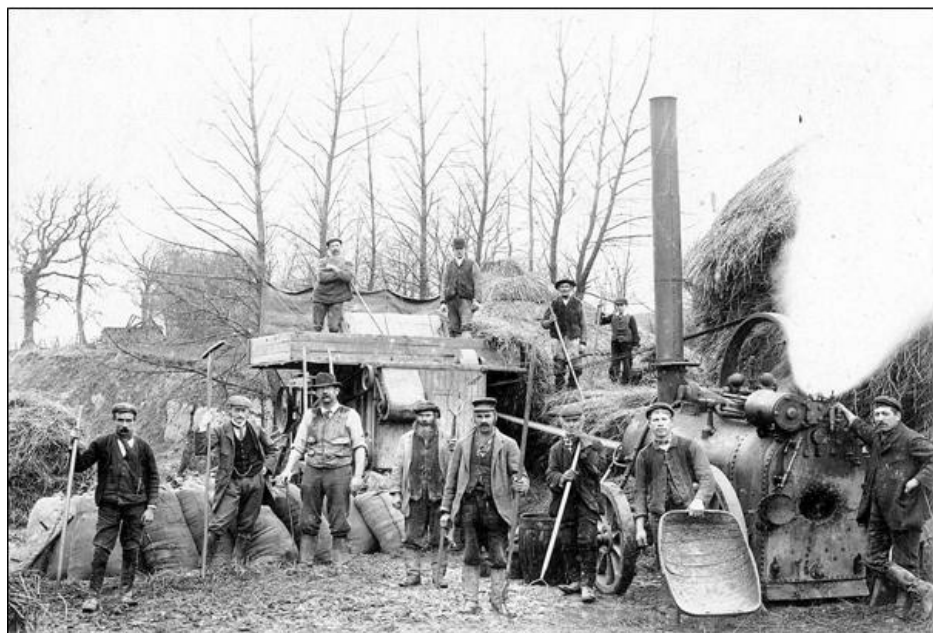
Horses were of course the main form of pulling power from 1900—1950.



Loading sheaves of corn c.1940.



Sheaves were then stacked into ricks as seen here at Gulliford Farm.



Later in the Autumn came the steam driven threshing machine.



There were many farms in the area—this is Cooks Farm c.1910.



Browns Farm, a centuries old property with an interesting history.



Woodmanton Farm, a typical Rolle Estate farmhouse and buildings.



Webbers Farm, another Rolle Estate farmstead in the centre of the village.



Bridge Farm at Woodbury Salterton, longtime home of the Sage family.



Higher Venmore Farm c.1942.



Downhams farmhouse at Woodbury Salterton.



Woodbury House Farm, home of the Stamp family for most of the 20th century.



Cottles Farm, another centuries old property.



Mr Havill farmed at Higher Mallocks at the turn of the 20th century.

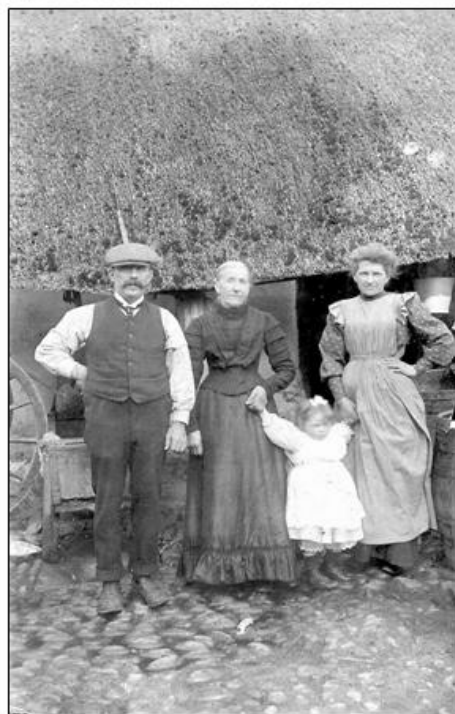
The Glanvill's farmed at Rydon Farm at the same time.

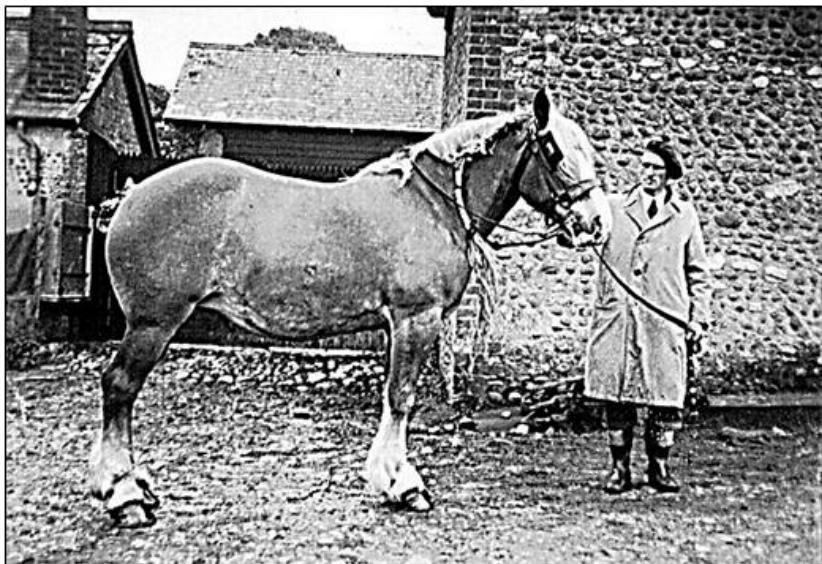




Before them were their
parents JJ Glanvill and
his wife.

In Woodbury Salterton
the Wilson family still
survive until today.
Picture c.1900.





Horses were the motive power until mid century. Here Harry Miller is seen at Lower Mallocks farm with “Blossom” their draft horse.



Webbers Farm’s shire horse pictured c.1940. This of course is now Culvery Close!



Emanuel Hawkins raking hay in the Path Fields c.1942.



Horses were also used for personal transport as there were few cars. This is Harry and Kathleen Stokes in Bonfire Lane c.1940 with their pony "Ginger".



All the housewives wanted to learn new skills and many different classes were held c.1915. Young Harry Stokes is seen in the centre with his dog.



These classes went on over a long period—this is c.1940.

Devon County Council Dairy School.

This is to Certify that
Mrs Harry Stokes.
attended a Course of Instruction
in Butter-Making at the above-named School at
Woodbury. in the month
of *October* 19*00* and in a Competition
of the Pupils at the termination of the Course
was awarded Third Prize.

J. P. Dalton
judge

C. T. D. Acland, | Chairman of the
Education Committee.
J. F. Young, Secretary.

Certificates were issued to those who were successful.

Devon County Council Poultry School.

This is to Certify that
Mrs Harry Stokes
attended a Course of Instruction
in Rearing and Marketing of Poultry at the above-named
School at *Woodbury* in the month
of *September* 19*16* and at the termination
of the Course was awarded 1st class for practical 2nd class for theoretical work.
Special Prize for the best Practical work.

Becil Platt Instructor.

W. Frankish | Chairman of the
Agricultural Committee.
J. P. Dalton Agricultural Organizer.

Altogether quite a collection was amassed.



Victory Churn Contest

(1943-44)

This Diploma

is awarded to the Farmer & Farmworkers
of LOWER MALLOCKS FARM

WOODBURY, NR. EXETER,

in the county of DEVON.
in recognition of their loyal work for their
Country in its time of need.

The milk production of this Farm showed
an increase during the winter period
of not less than 10 per cent over
the previous year.

H. S. H. R.

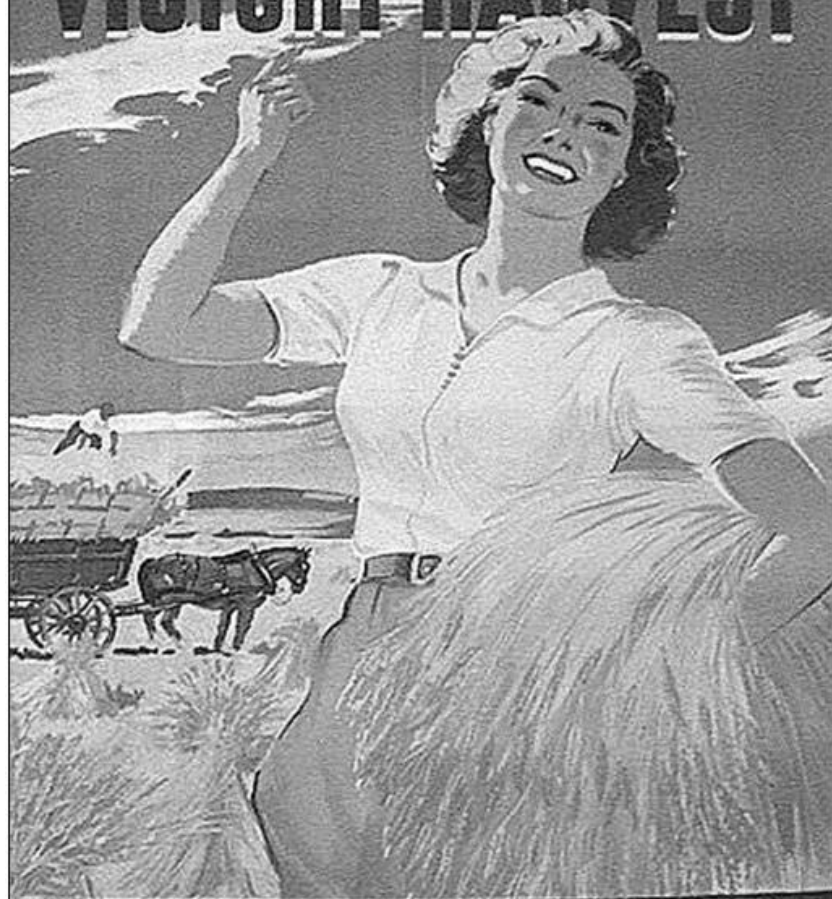
AUGUST 4 1944

MINISTER OF AGRICULTURE



During the second world war period farmers were asked to increase production and certificates were issued in recognition for this.

Come and help with the
VICTORY HARVEST



You are needed in the fields!

APPLY TO NEAREST EMPLOYMENT EXCHANGE FOR LEAFLET & ENROLMENT FORM
OR WRITE DIRECT TO THE DEPARTMENT OF AGRICULTURE FOR SCOTLAND
15 GROSVENOR STREET, EDINBURGH.

During the war landgirls were recruited to work on the farms.



During and after the war tractors took over from horses. John Stamp is seen here driving an Allis Chalmers along with the author!



John is seen again ploughing a straight furrow with a Standard Fordson tractor.



At Woodbury Salterton the Wilson's are busy digging potatoes.



Whilst at Webbers Farm the harvest was in full swing c.1945.



To service all this new equipment Berry's garage was kept very busy.



Along with the Vickery's who made and repaired farm trailers and carts.

DAY OR NIGHT

TELEPHONE: WOODBURY 329



PRIVATE HIRE TAXI SERVICE

H. J. VICKERY & SON

Undertakers, Wheelwrights, etc.

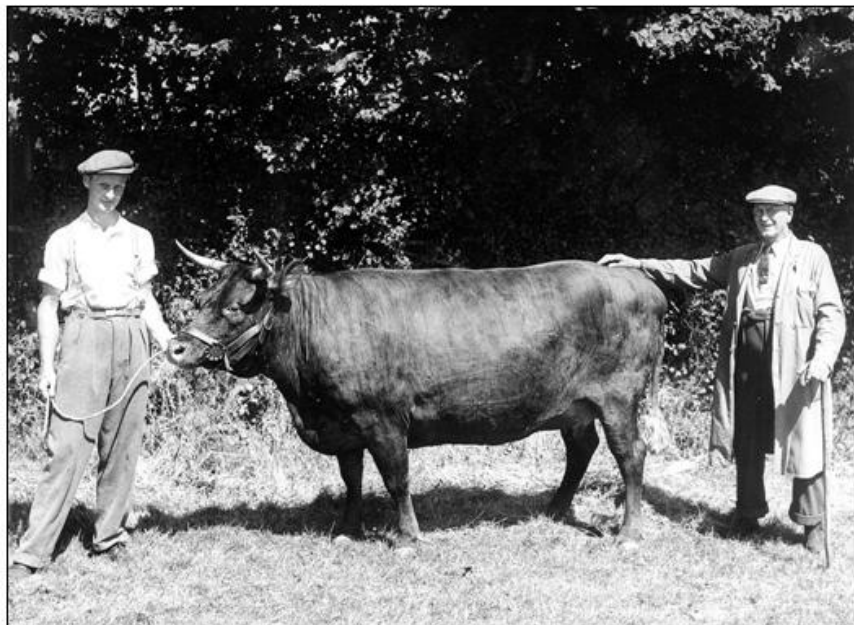
"Fernlea," WOODBURY
DEVON

M. A. Middleton, Lower Mollorke, Woodbury Aug 1956.

1956.		£	s.	d.
March	To, Repairs to Fowl House, Pref & fix new Felt on roof. 8' 2" x 6' 6". 28' of 1 1/2" x 3/8". Strip on Dove. Fix 2 new Panes of glass (24" x 22 1/4"). Repair another Fowl House Dove. Material & Labour.			
June	To, Repairs to Tractor Trailer. Take up bottom, pref & fix new front piece & side rail, re-fix ironwork etc. Fix 4 new pieces for Lade Eyes, pref & fix new Larch Bottom, re-screw Lade Eyes & re-fix. Repair 1 Lade, 1 new Side, 1 Bar, re-fix Lade Hangings etc. Fix new Bolts in sideboards Hangings, re-hair same. Pref & fix new Back Board, 1 New Hanging & Bolts Take off Brake Attachment, dismantle & straighten, re-fix with new Cable Wire. Wash off Trailer & Paint 2 Coats, new woodwork 3 Coats. Re-Lettering & Grease Bottom. Material, Bolts, Paint & Labour.	2	17	0
		19	15	6
		22	12	6

Rec'd
Set
H. C. 2
H. C. 2
56
1956

A typical Vickery bill for services rendered in 1956.



Throughout the 1930's and 40's gymkanas and livestock shows were very popular, where farmers competed for the best animal. John Stamp and his father Bert are seen here with their prize winning exhibit.



The Young Farmers Club also held stock shows for it's members.



To feed all these animals
Woodbury Mills was kept busy.
They were the main suppliers
of foodstuffs for all the local
farms.

Belts and pulleys were used to
drive the machinery which
made the food.



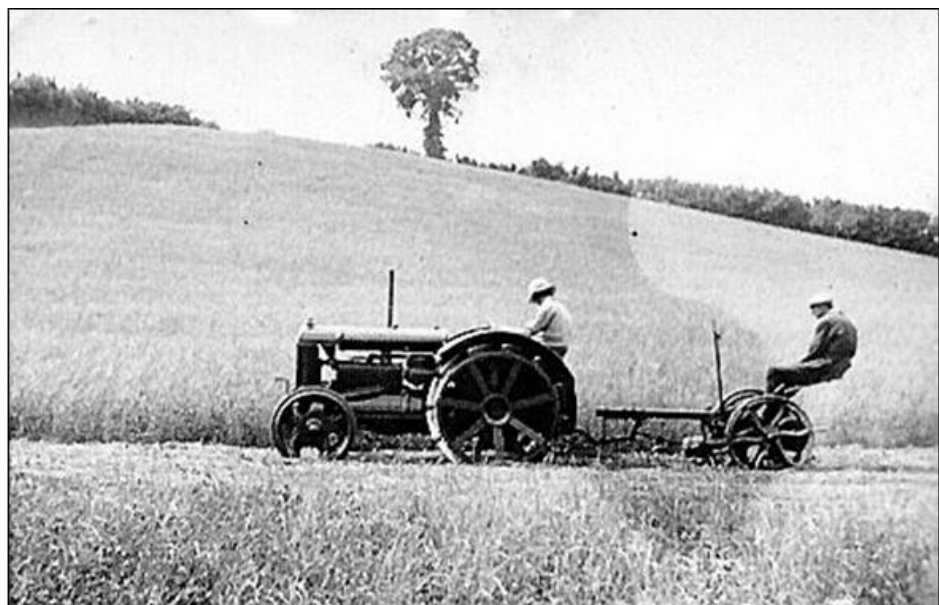
This was all powered by a
Fielding and Platt gas
engine in the early years.



Better varieties of cereals were bred for better outputs. These were sold to the mill. Here Percy Sharland and Harry Stokes stand in an excellent crop in 1945.



Silage was a new innovation in the 1950's. The silage pit at Webbers Farm was reputed to be the first in Devon. Now long gone!



An idyllic scene—two men went to mow a meadow in the Pathfields.



Harvest work was thirsty work, and a harvest tea was always provided.
The jug is still being used in 2007, some 60 years later!



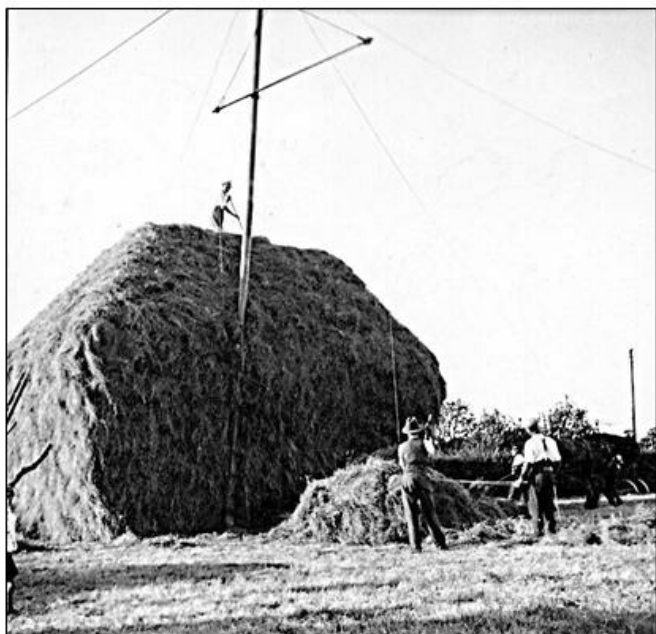
Walter Chapman
who was horseman
at Webbers Farm is
seen here stooking
up sheaves of corn
after the binder
c.1948



In the 1940's and 50's there were few cars, so animals could roam without fear. Photo taken in Bonfire Lane c.1945.



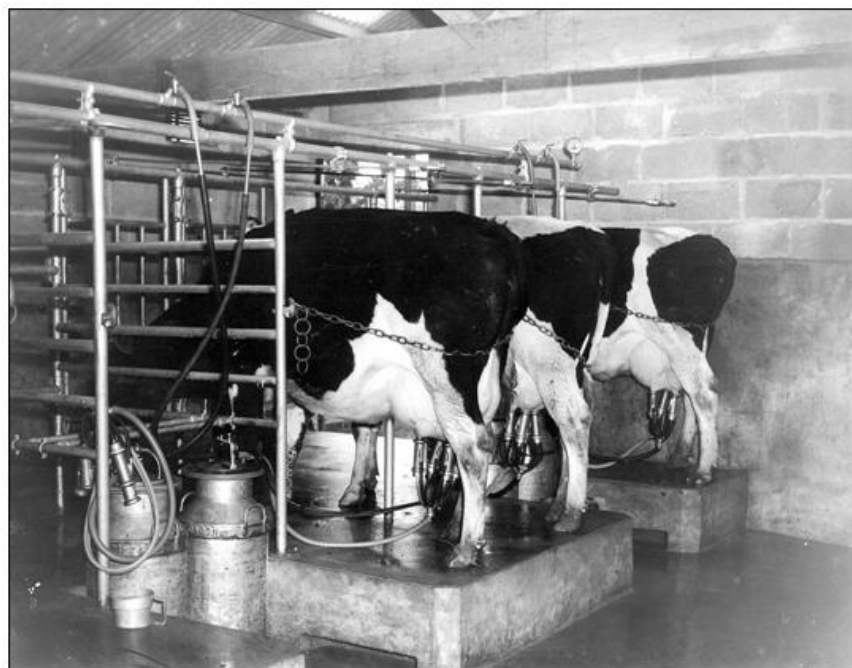
Where Culvery Close now stands ducks geese and chickens were fed.



Hayricks were part of the local scene, with elaborate methods to make them.



In the 40's sometimes cows were milked in "bails" in the fields.



In the 50's most cows were milked in "parlours" indoors. This saved much backache as the cows were up on a higher level.



In the period of expansion after the war large poultry units were set up in “Fold Units”. These could be moved daily so that the chickens had fresh grass.



Dick Carpenter from Budleigh Salterton feeds the hens at Webbers Farm in 1951. This was the equivalent of free range eggs.



In the 1960's land was reclaimed from the fringes of the common. These areas were called "Brakes". More modern tractors enabled greater work by one man.



In the same field the loading of bales was made a one man job also.

COTTLES FARM, WOODBURY,
EXETER

November 3rd 1955.

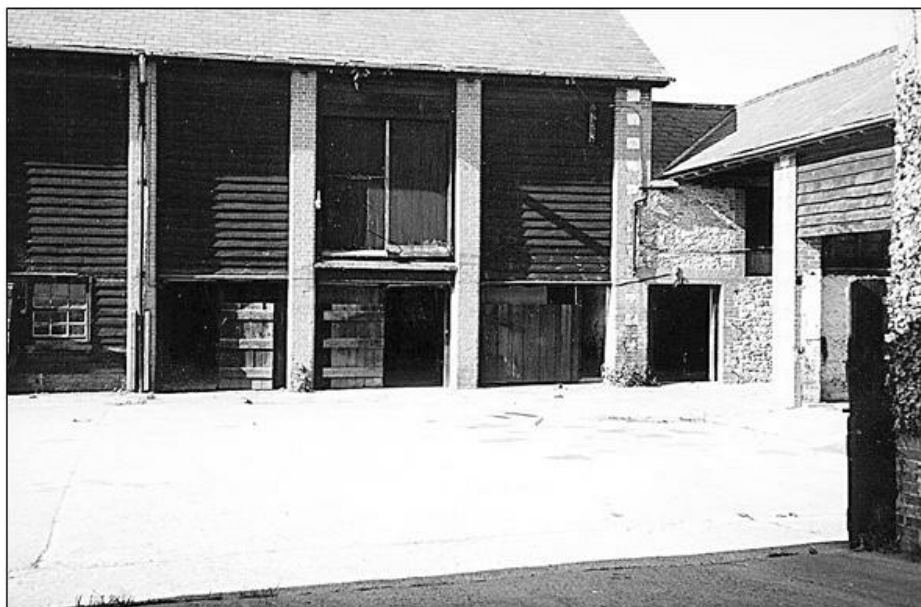
M/r A Middleton, Mallocks Farm
Woodbury

A. J. SMITH

Telephone : Woodbury 311

June 27 th 1955.	To baling 620 bales straw @ 62 ^{1/2}	£16-15-10.
" 28 th	" " 840 " " @ 62 ^{1/2}	£23-15-0.
August 28 th	To combining wheat, 11 acres @ 80/ per acre.	£44-0-0
" 12 th	To baling 1000 bales straw @ 62 ^{1/2}	£25-0-0
Sept 29 th	To combining grass seeds, 7 acres @ 80/ per acre.	£28-0-0
Oct 1 st .	To baling 310 bales clover @ 62 ^{1/2}	£7-15-0
		£144-15-10
3 cwt, Potatoes		2-5-0
		£144-0-10
Received of Will Hankes		
November 23, 1955		
A. J. Smith		

In the 1950's agricultural contracting became quite prominent and Archie Smith was a good example. As machinery got more expensive it was not feasible for one farmer to own every piece of equipment.



By the 1980's many of the older farm units were no longer suitable for modern farming and were converted into dwellings. This is now Woodcote Court.



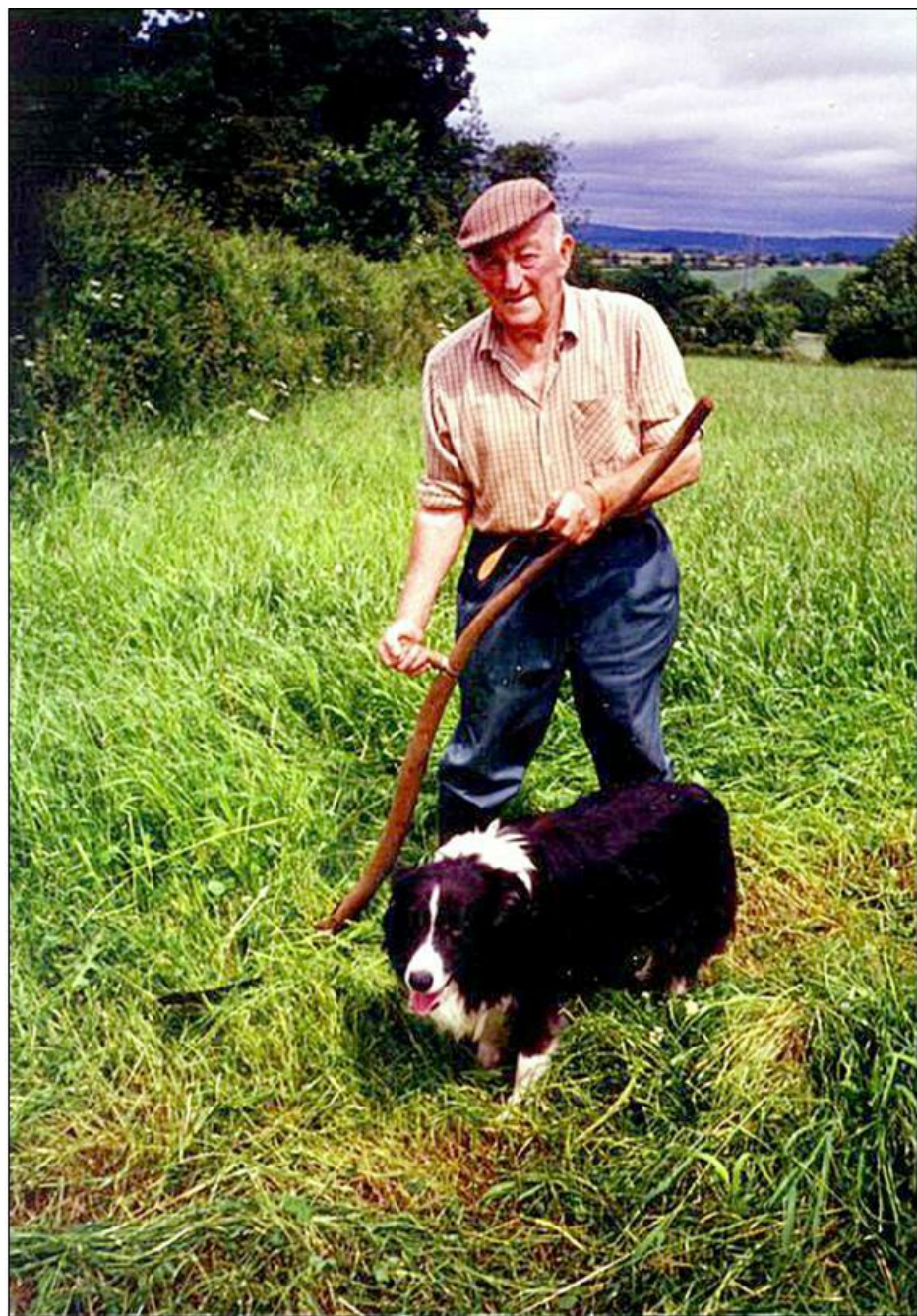
The same happened at Woodmanton which became for a while a pottery factory making designer teapots for world export.



At one time four herds of cows traversed Woodbury roads every day, and of course there was not a car in sight. This would not be possible now!



Another herd passing Woodbury House with full udders ready for milking.



One man and his dog! The late George Wilson cutting grass the old fashioned way. Idyllic?—NO. You should try it, then you will know the answer!