

Jan. 10, 1912

Mr. C. H. Stamp, Woodbury

1911

£ s d

July	1	1 man 2 hrs. put in asce stem		..	10
Aug.	14	2 shoes on pony			10
	15	soldering Kettle		..	3
	28	2 men 1 day ea. repair doors windows		7	8
	29	2 men 1 day ea. do. do.		7	8
	30	2 men 1 day ea. do. + rehang yard doors		7	8
	31	1 man 1 day do. do.		3	10
		1 man 5 hrs do. do.		2	1
		4 pack cords 12 clouts		1	4
		3-9 of 11x3/4 deal for garden door	2s	..	9 1/2
		1 pair 2 1/2" butts + screws, 1 catch		..	4 5
		1 pane glass 9 1/2 x 8 1/2 putty,		..	3
		9. 1" screws		..	1 1/2
		2-3 of 2 x 1 1/2 + 3-6 of 4 1/2 x 2 1/2 deal		..	9
		3 ft. of zinc		1	0
		6-0 of 2 x 3 1/2 deal		..	9
		3-6 of 3 x 7 .. sill	5s	1	7 1/2
		1. 2 1/2" butts + screws + 8. 1" screws		..	3
		4-0 of 9 x 3/4 for door		..	8
		2-0 of 1 1/2 x 1/2 stop		..	1 1/2
		77-0 of 7 x 1 attic floor	1s	9	7 1/2
		4 lbs. nails		..	8
		12. 1 1/2" screws		..	2 1/2
		2-0 of 7 x 1 deal for yard doors		..	3 1/2
		2-0 of 2 1/2 x 1 1/2 .. "		..	2 1/2
		2-0 of 3 1/2 x 2 .. "		..	3
		2-0 of 7 x 5 oak stop block .. "		1	9
		1 window stay		..	5
		repairing latch of door		..	3
		" door ironwork 1 1/2 hrs		..	9
		put plate to catch of door		..	4
30		put handle in dung fork forward		..	4
			£	2	14 2

1911		£	s	d
	brok. forward	2	14	2
Sept.	6 2 shoes		1	2
	7 7 shute cramps		1	9
	.. 1 man 1 day repair window frame		3	10
	8 repairing shute cramps		..	6
	9 1 man 1 day pricing shunting		3	10
	1 man 1 1/2 hrs. keep do.		..	7 1/2
	3. 6'-0" lengths of 4" 2nd shunting		4	3
	1. 4" nozzle		..	10
	2 stop ends		..	5
	1. 8x2 swan neck		1	4
	1. 6'-0" of 2" Riv Pipe		1	9
	1. 2" toe		..	8
	6 pipe nails, 7 gutter bolts,		..	6 1/2
	13. 1 1/4" screws		..	2 1/2
	1 lb. red lead		..	4
	1'-2" of 4 1/2" shunting		..	3
	1. 5" stop end		..	3
	4'-0" of 7x3 deal pill		1	10
	1 hook & eye		..	1
	1 window stay.		..	5
	12 1 man 7 hrs. paint shunting & put-up barges		2	11
	13 1 man 2 hrs. paint barge re-shunting		..	10
	13-6 of 7x1 barge board		1	8 1/2
	nails 1'		..	1
	1. 6" rim dead lock retaple		2	0
	2 lb. paint for shunting barge		1	0
	23 2 shoes on pony		1	0
Oct.	7 turning dung drag		..	3
	13 2 shoes		1	2
	26 4 shoes on pony		2	0
Nov.	4 1 staple & 2 rivets in draft		..	4
	forward.	£	4	12 4

1911		£	s	d
	brought forward	4	12	4
Nov.	4 1 link in chain			2
	6 2 shoes		1	2
	15 1 remove			3½
	1 large false link for draft			4
	17 1 link			2
	24 2 shoes		1	2
	30 2 shoes on pony		1	0
Dec.	1 repairing chair		1	0
	16 2 shoes		1	0
	23 2 shoes		1	0
August	To painting outside of house and			
September	making + fixing new garden door			
	and jambs as per contract of Aug. 23. 1911	8	15	0
		£	13	14 7½

Paid Jan. 11. 1912

Dec. 13. 1911

Rev. W. F. Burtees. Sampford Courtenay

1911

£ s d

Mar. 29 To examining bells rail fares

9 6

Apr. 10 + # 2 men 10 1/2 hrs. ea. putting in new canon in bell (2nd)

14 0

11. 2 men 13 hrs. ea. do.

17 4

Smith

4 6

2 mens railway fares

9 6

Trap to Woodbury Rd. twice

2 6

new canon

2 8

£ 3 0 0

Paid, December 18th 1911

Jan 2 1912

Mr. T. Glanville, The Brewery, Woodbury

1911			£	s	d
Sep.	26	1 man 4 1/2 hrs. taking down furniture		1	10 1/2
	29	1 man 3 hrs. do			3
Oct.	7	1 man 6 hrs. put in glass, pic lamp & shelves		2	6
		1 pane glass 14 3/4 x 9 3/4 & putty			6
		6-3 of 9 x 1 deal shelf	2 3/4		15
		4 1" screws			1
		1 holdfast			3
	11	1 man 7 1/2 hrs. painting bedrooms		3	1 1/2
	12	1 man 1 day do. changing sash		3	10
	13	1 man 1 day do. papering		3	10
	14	1 man 1 day, papering & hanging sash		3	10
		4 sash pulleys, 12 1/2" 1" screw	3		16
		2 .. cords & bolts			8
		1 .. fastener & 8, 1" brass screw			7
		4 8 1/2 lbs. sash weights		2	4
		5 lbs. paint		2	6
		1 bow latch & screws			10
		2 sheets glass paper			1
		15 pieces wall paper	10 1/2		13 1/2
		1 bucket of paste			6
	16	1 man 4 hrs. rehang stable door		1	8
		1 man 1 day painting & papering bedroom		3	10
	17	1 man 1 day papering bedroom		3	10
	18	1 man 1 day painting lower room		3	10
	19	1 man 1 day papering do		3	10
	20	1 man 1 day painting & fixing shelves		3	10
	21	1 man 1 day repair shutters, move furniture &		3	10
		1 square for stable jambs			6
		1 stay & staples for pump handles			5
		7 1/2 lbs. paint		3	9
		1" 3 of 2 1/2 x 1 stop for stable door			1 1/2
		nails			1
		1 blind cord rack			4
		forward	£	3	14 8

1911

£ s d

	brok. forward		3	14	8
	2 blind roller cups & screws				2
	3 sash pulleys & 6 screws				9
	5 sash cords				18
	1-6" of 4x1 pocket pieces				2½
	1 sash fastener & 8 screws				9
	2, 8½ lb. sash weights				12
	6-6 of 7x1 floor	1½			10
	10-6 of ¾" beading				4½
	1 brass lamp crook				5
	paint				4
	1 cupboard turn				4
	4-6 of 3x1¼ deal for shutter				4
	6 pieces of wall paper	1½			6 9
Oct. 23	1 man 7 hrs. making ladder				2 11
	24-0 of 3x2 deal				2 0
	4-0 of 11x1 elm	2½			10
	1 lb. nails				3
	1 lb. paint	6-6			6
24	1 man 2 day repair ventilator				1 11
	1 lab. 2 hrs. do.				8
	5-0 of 5½x¾ deal do.	1½			7½
25	1 man 1 day repair yard gates, cow boxes, manger				3 10
	repair gate bolt & put new bar				9
	14-0 of 7x1 for gates	1½			1 9
	5-3 of 3x2 deal head				5½
	2, 3½x¾ bolts, 6, 1" screws				3
	latch				3
	1 lb. nails				2
	To making and fixing a partition and door, to making, fixing, staining forward	£	5	5	11

1911

£ s d

	brost. forward		5	5	11
	and varnishing a counter, + to putting glass in floor		"	"	"
	To extra oak pill for partition 6'0" of 4 $\frac{1}{2}$ " x 3	4	2	0	
Nov.	1 1 man 1 day put up match board ceiling			3	10
	2 1 man 1 day do. + make shelves and job				3 10
	3 1 man 1 day make fix job shelves			3	10
	4 1 man 1 $\frac{1}{2}$ hrs. fix clock + curtain pole 1 hook for pipe				7 $\frac{1}{2}$ 6
	10 4'0" of 7 x $\frac{3}{4}$ match for ceiling	1 $\frac{1}{4}$	10	10	
	9'0" of 7 x 1 floor do	1 $\frac{1}{2}$		1	1 $\frac{1}{2}$
	1 $\frac{1}{2}$ lbs. nails do				3
	12'0" of 2 x 1 batten do				4
	28'9" of 4 x 3 deal for job	3 $\frac{1}{4}$	7	9 $\frac{1}{2}$	
	3'9" of 7 x 1 $\frac{1}{4}$ " do	2		7 $\frac{1}{2}$	
	11'0" of 2 x 1 " bracket				4
	6'0" of 9 x 1 " shelf	2 $\frac{3}{4}$	1	4 $\frac{1}{2}$	
	6. $\frac{3}{4}$ " screws				1
	6 1 man 3 $\frac{1}{2}$ hrs. fix lamp screen				1 5 $\frac{1}{2}$
	1 rod + piece sheet iron for lamp				2 4
	7 1 man 5 $\frac{1}{2}$ hrs. making fixing shelves 3 holdfasts				2 3 $\frac{1}{2}$ 9
	12'9" of 9 x $\frac{3}{4}$ deal shelves	2 $\frac{1}{4}$	2	3 $\frac{1}{2}$	
	1'6" of 5 x $\frac{3}{4}$ do.				2
	12 screws, 12 clouts				3
	2. 2" screws				1
	13 1 man 3 $\frac{1}{2}$ hrs. make fix dart board				1 5 $\frac{1}{2}$
	28'0" of 7 x $\frac{3}{4}$ match	1 $\frac{1}{4}$	2	11	
	nails 1'				1
	4. 1 $\frac{1}{2}$ " screws				1
	2 hooks				5
	forward	£	13	17	10 $\frac{1}{2}$

1911

£ s d

	brok forward		13	17	10½
Nov-20	2 men 8 hrs. each strip paper & take down settle r				6 8
21	1 man 3½ hrs. make skirtings				1 5½
23	2 men 8½ hrs. ea. fix skirtings r				7 1
24	2 men 1 day ea. make door. fix skirtings. picture rail r				7 8
25	2 men 1 day ea. do.				7 8
	51-0 of 7x1 toun skirting	1½			6 4½
	½ lb. paint for do.				.. 3
	6-6 of 7x1 floor board	1½			.. 10
	5-3 of 7x1¼ do.	2			.. 10½
	17-0 of 2½" archit. mldg				1 2½
	3-0 of 3x3 oak pill				.. 9
	10-6 of #3/8 bead.				.. 4½
	2 sash pulleys. 4. 1" screws				.. 6
	2 sash cords				.. 8
	2. 8½ lb. sash weights				1 2
	3 lbs. nails				.. 6
	6-0 of 7x1 deal for cupboard				.. 9
	6-3 of 7x¾ " "				.. 6½
	5-9 of 4½ x ¾ " "				.. 5½
	1 pair 2½" brtts & screws				.. 4
	56-0 of P. picture rail				3 10
27	1 man 1 day 1 hr. make paint door				4 3
	1 man 1 day painting room				3 10
28	2 men 5½ hrs. ea. painting do.				4 7
29	1 man 8 hrs. hang paint door				3 4
30	1 man 1 day sizing walls & painting				3 10
Dec. 1	1 man 7½ hrs. fixing locks & painting				3 1½
2	1 man ¾ day put up settle & put bolt on yard gates				..
	forward	1½	17	13	8

1911

£ r d

	brk. forward		17	13	8
	14½ lbs. paint			7	3
	2 q of 2" mldg.			..	2
	15.6 q of 7 x 1½ deal door	3		3	10½
	9.6 q of 11½ x ½ "	2		1	7
	7.3 q of 5 x ½ " stops "	1		..	7½
	1 pair 3" butts & screws "			..	5
	1. 6" rim lock complete "			2	6
	1 turnbuckle			..	4
	1. 4" dead lock & screws			1	4
	2. 6" of 2 x 1 oak for pill			..	2
	2. 6" of 1½ x ½ deal for door			..	2
	3 sheets glass paper			..	1½
	¼ lb. glue			..	2
	3. 9" of 4 x 2 oak pill for kitchen			..	9
	1 galv. bolt & screws for gates			1	3
Dec.	4 graining room 7/-			8	0
	5 1 man 3½ hrs. varnishing room			1	5½
	6 1 man 7½ hrs. do. of papering			3	1½
	7 1 man 7½ hrs. papering			3	1½
	8 1 man 1 day do. fix curtain pole, furniture			3	10
	9 1 man 1 hr. fix door stop			..	5
	8 pieces of wallpaper 1/9			14	0
	22 yds. of border 6			11	0
	1 bucket paste			..	6
	copper wire & 2 staples 2/-			..	2
	1 quart of Varnish			3	10
		£	21	3	10
	Paid January 13. 1912 disc.			3	10
		£	21	0	0

Jan. 8. 1912

Rev. F. Newham. Farway, Rectory

1909

£ s d

Dec. 8 To examining and making a report
of Farway Bells

10 6

Oct. ¹⁹¹¹ 24 To 2 bellropes 60p. ea.
Postage

1 2 0

.. 8

Amended bill £1-2-8 sent March 6. 1912

£

1 13 2

March 9. Received £1-2-8.

Jan. 8. 1912

Mr. P. Elford, Churchwarden
Advent, Camelford

1911

Oct. 17 To 5 bellropes 70p. long ea. 11/6

£ s d

2 17 6

Paid, Feb. 9. 1912.

Jan. 10. 1912

Mr. J. J. Glanville Rydon Farm

1911

£ s d

June	23	1 man 1 hr. about waggon wheels	7	..	5
	27	1 man 5 1/2 hrs. ring waggon wheels	T		22 1/2
		1 man 7 1/2 hrs. do. do	T		30
	28	1 man 5 hrs. do. do	T		20
		1 man 6 1/2 hrs. do. do	X		27
	29	1 man 1 1/2 hrs. paint wheels	X		7
		2 new tyres 7 1/2 lbs.	2 1/2	£	16 3
		put on 2 tyres on front wheels			5 0
July	1	1 man 2 hrs. paint wheels	+		9 1/2
		1 1/2 lbs. red paint			4
		6-0 of 18x3 elm plank	1 1/2		6 1/2
				£	206.

Paid. March 28. 1913

Jan. 10. 1912

Mr. W. James. "Wilbourne",

1911

£ s d

June 17	1 man 1 hr. fix blind rollers	..	5
24	4-9 of 10x1 deal mantelboard	13	
05	1 brass hook for lamp	..	6
29	put name over door	10	
July 11	1 man 3 hrs. prepare & paint shelves	13	
.. 12	1 man 4 hrs. fixing shelves	18	
	24-0 of 7x1 deal shelves	30	
	1 lb. nails	..	2
	paint	..	6

£ 9 9

Paid Jan. 18. 1912

Jan. 10. 1912

Mr. H. Dagworthy

£ s d

1911

July	1	graining front door	40
	3	2 hrs. varnish front door	.. 10
		½ pint of varnish	10
June	16	1 man 3 hrs. putting in glass	13
		4 panes glass 12½ x 10 ea	18
		1 do. 12½ x 7¼ ea.	.. 4
		½ lb. putty	.. 3

£ 96

Paid Feb. 28. 1912

Jan. 10. 1912

Mr. Samuel Skinner

£ s d

1911

July	17	2. K. 4 shears	12
Nov.	16	1 do.	.. 7
Dec.	18	1 man 2½ hrs. make cow box	10½
		1 lb. nails	.. 2½

£ 30.

Paid Jan. 11. 1912

Jan. 10. 1912

C. Davey Esq. Knoll Cottage.

1911

F o d

July 12	72.0 of 2x1 batten planed	3/6	27
	16.0 of 2x2 deal planed		14
14	26.0 of 2x1 " "		11
17	1 man 8 hrs. siving walls, pacing brackets + hat pegs		34
18	1 man 2 hrs. stop in wall, fix pegs		10
	Hanging 16 pieces of wallpaper		94
	10 pieces of wallpaper at 2/-	1	00
	6 do. at 1/3		76
	paste		8
	3 screws. plugs for wall size		34
17	16.0 of 2x2 deal planed		14
	156.6 of 2x1 " planed	3/6	56
Sept. 4	1 man 2 hrs. put in glass		10
	1 pane glass 14x11 1/2 putty		8
5	1 man 2 hrs. easing doors		10
	6. 1 1/4 screws		2
	2. 3/4 laths.		2
Dec. 23	1 man hrs clean out shuting		16

 2 18 6

Paid Feb. 27. 1912

Jan. 10. 1912

H. W. Furnivall Esq.

£ . d

1911

July 14	1 man 2 1/2 hrs. put in sash cord and repair drawer	1 0 1/2
	1 sash cord + 4 cloub	..	5
	4-0 of 1x1 deal	..	2
	6. 1 1/2 screws	..	1 1/2
22	1 man 2 1/2 hrs. put in glass & nail up rail	..	1 0 1/2
	1 pane glass 18 1/4 x 14 1/2 putty	..	10
	1 rail 3-3 of 3x1 deal, nails 1-	..	4 1/2
x Sep. 23	put handle to hay knife & grinding	..	10
28	1 man 6 hrs. ease doors, fix shelves	..	2 8 1/2
29	1 man 1 1/2 hrs. nail up rail & ease doors	..	7 1/2
	3-9 of 2 1/2 x 1 deal	..	10 1/2
	1-9 of 6x1 "	..	2
	5-0 of 3x1 "	..	5 1/2
	6. 2 screws	..	2
	nails & tar	..	2
July 29	1 man 1 hr. put bolts in mattress	..	5
	12 round head bolts	..	6

 1 1/2

11 3

Paid. Feb. 13. 1912

W. Ferris-Kerr, Esq. Oakhayes

1911

£ s d

July 10	1 gallon of tar	..	4 $\frac{1}{2}$
"	putting 2 new axles to watercart	2	6
"	2 new handles	..	6
Aug. 2	tighten 2 beetle rings	..	6
"	new hammer stem, 2 rivets	..	9
	4 lbs. white paint	2	0
	4 lbs. red paint	2	0
Oct. 6	grinding table knives	..	9
16	1 flower pot tin & traps	3	6
Sep. 25	sharpen 2 large saws	1	3
Oct. 17	1 $\frac{1}{2}$ hrs. easing front door	..	7 $\frac{1}{2}$

£

14 9

Paid Jan. 11. 1912

Bawcombe

Mr. R. Lovell, Bradstone, Lymington

£ s d

1911		£	s	d
Dec. 14	To 5 bell ropes each 70 feet long	3	2	6

Paid, Dec. 14. 1911

Jan. 17. 1912

Mr. Fred Stamp, Butcher

1911

£ s d

July 18	1 man 7 hrs. put dowels & collars in wheels		.. .	
	1 lb. leather for collars		2 11	
	6 iron dowels		2 0	
	tyring 2 wheels		.. 3 1/2	
			5 0	
Aug. 14	1 man 3 1/2 hrs. new collar waggon wheels		1 5 1/2	
	1 lb. leather		2 0	
	1 old bellrope		1 6	
Oct. 3	shoot band of wheel		.. 6	
12	tyring 1 waggon wheel		2 0	
11	1 man 1 day make new waggon shafts	}	3 10	
12	1 man 7 1/2 hrs. do.		3 1 1/2	
13	1 man 3 1/2 hrs. do.		1 5 1/2	
	8-0 of 7 1/2 x 2 ash		5	3 4
	3-0 of 2 x 2 1/2 "		1 3/4	.. 5 1/2
	3-0 of 4 x 1/2 elm			.. 1 1/2
	repair ironwork of shafts, & 1 new long bolt		13/9	.. .
				1 5
17	putting new ears to front carriage of waggon & repairing front carriage			.. .
				4 6
19	1 man 4 hrs. do.		1 8	
20	1 man 3 hrs. putting on carriage		1 3	
		£	1 18 10	

Jan. 17. 1912

Mr. Henry Glanville jr. Webbers Farm

£ s d

1911			£	s	d
July	26	tyring 4 wheels		10	0
	27	1 man 3½ hrs. fasten boxes of wheels		15	½
Aug.	14	1 man 2½ hrs. repair waggon shafts		10	½
		2 plates of iron for do.		2	0
		4. 4x3/8 bolts			6

 £ - 15 0.

Paid. Jan. 22. 1912

Messrs. Brockington Whimpe

£ s d

1911			£	s	d
Aug	24	1½ hrs. make ash lath } 3" 0 of 2¼ x 3/4 ash }			10

Paid. Feb. 20. 1912

Jan. 17. 1912

Mr. William H. Stamps.

1911			£	s	d
July	1	4 shoes		2	4
	3	4 shoes		2	4
	24	4 shoes		2	4
Aug.	2	new handle to hatchet		1	0
	3	2 shoes		1	2
	15	2 shoes		1	2
	18	2 shoes		1	2
	21	4 shoes		2	4
		1 crook for head chain		..	6
	29	1 rivet in handle & solder milk pail		..	4
	31	4 removes		1	2
Sept.	2	1 remove		..	3½
	16	put in pick stem		..	5
	25	4 shoes		2	4
Oct.	2	2 shoes		1	2
	10	1 remove		..	3
	16	1 remove		..	3
	26	4 shoes		2	4
	30	4 shoes		2	4
Nov.	17	1 shoe		..	7
	21	3 shoes		1	9
	23	2 hrs. make spreader } 3" 0 of 2" x 2" each	
	24	3 large links, 2 crooks in chain		1	3
	27	1 remove		..	3½
Dec.	6	putting screws in trap shaft		..	6
	9	1 remove		..	3½
	13	4 shoes		2	0
	20	4 shoes		2	4

Paid, April 25. 1912

£ 1 15 5½

Jan. 17. 1912

Mr. W. Chapman, Carver

1911

£ s d

Aug. 24 cut & put on 4 waggon wheel tyres
 1 hr. put in collars
 5 ozs. leather

10 0

. 5

. 7

 £ . 11 0

Paid Feb. 5. 1912

Jan. 17. 1912

Mr. Steele, Preston Cottage

1911

£ s d

Dec. 15 cleaning out shutters
 " 1 bag of sawdust

1 6

. 9

 £ . 2 3

Paid Feb. 7. 1912

Mr. W. Troake, Southhill, Woodbury

1911

£ s d

June 10 tyreing 2 trap wheels

5 0

 Paid May 25th 1912

Jan. 17-1912

Mr. S. G. Miller,

1911

				£	s	d
Sep.	6	1 man 4 1/2 hrs. make steps				1 10 1/2
	7	1 man 2 1/2 hrs. do				1 0 1/2
		5-6 of 7 x 1 deal	}			8 1/2
		2-3 of 11 x 1 deal				7
		2-0 of 9 x 1 "				5 1/2
		2-3 of 2 x 1 "				1 1/2
		1-3 of 6 x 3/4 "				1 1/2
		nails & paint 4-				4
				5-3-		
	26	1 man 3 1/2 hrs. rigging cart wheels	}			1 5 1/2
	27	1 man 1 day do.				3 10
		1 man 2 1/2 hrs. do.				1 0 1/2
	28	1 man 3/4 day do.				2 10 1/2
		1 man 2 hrs. do.				10
Oct.	29	1 man 2 1/2 hrs. do.				1 0 1/2
		12 elm felloes				6 6
		4 spokes				1 4
		7 lb. paint				6
		2 new tyres 117 lbs				1 4 4 1/2
Dec.	3	1 man 2 hrs. paint wheels			10	
		1 lb. paint			6	
				£ 2-5-0 1/2		
	16	1 man 3 hrs. repair rail of cart			1 3	
	17	1 man 6 hrs. do.			2 6	
		6-0 of 2 x 2 ash rail			9	
		6-0 of 4 1/2 x 1/2 elm			6	
		6-0 of 2 x 1 elm			2 1/2	
		4. 1 1/2" x 1. 2" screws			1 1/2	
		copper wire & plate of iron 3			3	
		1 lb. nails			2	
		1/2 lb. paint			3	
		repair tail iron, 2. 3/4 bolts, 1 plate,			" "	
		12 rivets, 8 nails			1 6	

forward

£ 2 17 9

1911

₤ . d

Oct.	21	brot. forward 1 man 6 hrs. make fix calves crib 25'-0" of 11x1 elm 1 lb. nails	2 17 9
			26
			50
			2

 ₹ 3 5 5

Paid Feb. 10. 1912

1911 Rev. J. J. Fulford, The Priory

£ s d

Sep.	18	1 man 7 hrs. repairing joists		2	11
	19	1 man 2 1/2 hrs. do. do.			
		14'-0" of 9x2 joists	4	1	0 1/2
		2 lbs. nails		4	8
				4	
	27	15 small hooks for brick wall		1	0
		1 man 7 hrs. repairing		2	11
	28	1 man 7 1/2 hrs. do.		3	1 1/2
	29	1 man 9 1/2 hrs. do.		3	11 1/2
	30	1 man 8 hrs. do.		3	4
		21'-0" of 3x2 rafter	1	1	9
		21'-0" of 7x1 barge	1 1/2	2	7 1/2
		4'-0" of 8x2 joist		1	0
		31'-0" of 4x2 studs	1 1/4	3	3
		12'-0" of 4 1/2 x 3 "	3 1/2	3	6
		12'-0" of 2 x 3/4 grounds		.	4
		8'-0" of 7 x 3/4 do.		.	8
		6 lbs. nails		1	0
		12'-6" of 7x1 floor		1	7
		3'-9" of 9x1 frame in end		.	10 1/2
		2'-0" of 7x2 "		.	6
		1 lb. paint		.	6
Oct.	2	1 man 9 hrs. repairing		3	9
	3	1 man 7 1/2 hrs. do.		3	1 1/2
	4	1 man 2 1/2 hrs. do.		1	0 1/2
		1 man 9 1/2 hrs. do.		3	11 1/2
	5	1 man 2 1/2 hrs. do.		1	0 1/2
	6	1 man 7 hrs. do.		2	11
	7	1 man 5 1/2 hrs. do.		2	3 1/2
		repairing study grate		1	6
		22'-0" of 7x1 floor board	1 3/4	3	2 1/2
		25'-0" of 3x2 rafter	1	2	1
		18'-0" of 2x1 batten		.	7
		6'-9" of 7x3/4 floor	1	.	7
		forward	£	3	6 11 1/2

1911

£ s d

		brok. forward		3	6	11½
		2½ lbs. nails				5
Oct.	9	1 man 9 hrs. repairing			3	9
	10	1 man 8½ hrs. do.			3	6½
	13	1 man 6½ hrs. painting			2	8½
	14	1 man 6 hrs. do.			2	6
		1 man 7½ hrs. do.			3	1½
		39.0 of 7x1 Corns skirting	1¼		5	8½
		1 lb. paint for do.			-	6
		5.6 of 4x8 joint	3		1	4½
		7.6 of 9x¾ skirting	2¼		1	5
		2 sheets glass paper			-	1
		10.0 of ¾ beading				5
		5.0 of ¾ do.				2½
		1 brass face sash pulley				5½
		19.6 of 7x1 floor	1½		2	5
		8½ lbs. paint			4	3
	16	2 men 9 hrs. ea. painting			7	6
	17	1 man 9 hrs. do.			3	9
	18	1 man 9 hrs. fix picture rail			3	9
	"	1 man 7½ hrs. do.			3	1½
	19	2 men 9½ hrs. ea. do. fix mirror r.			7	11
	20	1 man 7 hrs. painting			2	11
	21	1 man 6 hrs. enamelling, staining r.			2	6
		1 pane glass 21¼ x 15½ putty			-	10
		1 do. 13¾ x 10½ do.				4
		½ pint varnish for bedroom	¾			11
		stain do.				4
		5 lbs. paint			2	6
		6.0 of 7x1 floor			-	9
		2 lbs. nails				4
		1 pint of enamel			2	8
		forward	£	6	19	11½

1911		£ s d				
		boot. forward	6	19	11½	
Oct.	23	1 man ½ hr. size drawing room floor			7½	
	24	1 man 2½ hr. varnish do			10½	
		½ lb. size stain			8	
		1¼ pints Varnish			23	
		2 doz. brass picture hooks			30	
Nov.	13	1 man 7 hrs. clean off Lych Gate			211	
	14	1 man 7 hrs. oiling do.			211	
	17	1 man 2 hrs. do do.			10	
	22	1 man 2 hrs. paint ironwork do.			10	
		3½ pints of Linseed Oil			29½	
		½ lb. black paint			3	
					10/6	
Dec.	7	repairing chair			10	
		1 man 8 hrs. repair roof, cupboards, ease doors r.			34	
	8	1 man 7½ hrs. repair window put drip on door r.			31½	
	9	1 man 8 hrs. put in glass, fix lamp r.			34	
		3-0 of 3½ x ¾ deal for shelves			1½	
		12. 1¼" screws			2½	
		2 iron buttons & screws			2	
		1 wood do. & do.			1	
		1 cupboard lock & screws			9	
		1 brass cup. turn			4½	
		1 cup. bolt			6	
		6-0 of 4 x ¾ stops for window			6	
		2-6 of 1½ x 1½ " "			2	
		6. 1½ screws, 12 clouts			2½	
		2-6 x 2" of Zinc			3	
		2-9 of 5 x ¾ deal door drip			3	
		45-0 of 2 x 1 batten			15	
		forward	£	8	13	10

1911

£ s d

		forward	8	13	10
		1 lb. nails			2
		1 pane glass 13x11			4
		1 do. 13x4			3
		1 lb. putty			1½
		½ lb. paint			3
Dec.	15	1 man 5 hrs. fixing furniture	2	1	
	16	1 man 5½ hrs. do. + stop in paint window			2 3½
		½ lb. paint			3
		picture nail			3
		4. 2" rd. head screws			1½
		2.0 of 3x1¼ deal			2
		2 doz. brads			1
	19	put new glass in picture frame	1	6	
	29	sharpen saw			6
x July	14	1 man 3 hrs. repair floor	1	3	
		4" 6" of 2x1 floor			7
		nails 12			1
Oct.	5	To Fitter + assistant disconnecting + cleaning pipes of Range			17 8

 £ 10 1 9½

Paid February 17th 1912

C. F. Gould Esq.
 Lion House
 Bradford House
 Barnstaple

Jan. 1. 1912

The Vicar Churchwardens of Pilton

		£ s d		
1911				
Nov.	10	To men's time 3 1/2 hrs. overhauling bells in Pilton Church Tower	8	1 3 0
		To railway fares from Bideford to Barnstaple and back		4 6
		To carriage of tools & chain blocks		3 6
		To repairs to ironwork		6

£ 1 11 6

Paid. Jan. 3. 1912

Jan. 1. 1912

Rev. P. W. Brancker, Brent Knoll

Aug.	25	To men's time 13 1/2 hrs. screw up bell frame in Brent Knoll Tower	8	9 0
		Rail fares		9 9
Sep.	23	To 2 men's time 18 hrs. screw up bells & frame at Brent Knoll	8	12 0
		To trap hire from Breane		4 0

£ 1 14 9

Paid March 19th 1912

Jan. 1. 1912

Arundell Clarke Esq. Brookfield House, Fremington

1911

£ s d

Oct. 27 To examining bells in Fremington Tower 6 8
 Rail fares 8 1

£ 14 9

Paid Jan 9. 1912

Jan. 1. 1912

Rev. C. Chichester, Shirwell, Barnstaple

Nov. 27 To 2 men's time 22 hrs. overhauling
 bells in Shirwell Church ~~Bells~~ Tower 8 14 8

Paid Jan. 10. 1912

Feb. 5. 1912

Mr. W. Isaac, Churchwarden, Spreyton

Sep. 20 To 2 men's time 49 hrs. overhauling
 and 21 bells in Spreyton Church Tower 8 1 12 8
 Railway fares 7 8
 Cleaning tower 5 0
 Carriage of tools & chain blocks 2 8
 Clapper box, washers &c 3 0

£ 2 11 80

Trophies to & from Bow Station

3 0

£ 2 14 0

Paid Feb. 20. 1912

The Vicar & Churchwardens of Aseminster

1911

Nov. 17 To inspecting tenor bell in
Aseminster Church Tower

11 6

Paid Feb^y 23rd 1912

Jan. 1912

Rev. H. Forster Morris, South Hill
Aug. 28 To putting canon to Church
Bell as per contract of Aug. 18. 1911

2 3 0

29 To manstine thro. screwing up
bells frame

4 8

Paid Jan. 12. 1912

£ 2 7 8

Jan. 1. 1912

215 sub

A. S. Parker Esq. 34. Bedford St. Plymouth.

1911

£ s d

Dec. 1 To fixing rope guides & alterations
to bell fittings in Harberton
Church Tower as per contracts of
November 10. 1911

12 2 6

Paid Feb. 20. 1912

Jan. 2. 12

Apr. 7. 14

Rev. C. Sherwin, The Rectory, Clyst Hydon

Sep. 27 To main time 22½ hrs. overhauling
+ 28 bells framework in Clyst Hydon Tower

15 0

To railway fares

2 6½

To new ironwork

3 0

To trap hire for man tools

2 6½

Oct. 19 To main time 11½ hrs. about bells
in Clyst Hydon Tower

7 8

To railway fares

2 9

To trap hire

2 6

£ 1 16 0

Paid April 13th 1914

Jan 2 12

Rev. Canon Pridmore, Halberton Vicarage

1911

			£	s	d
Aug 17	To man's time 2 hrs. overhauling				
18	Halberton Church Bells		14	0	
	To railway fares		3	6	
	leathers for clappers			9	
30	To 1 bundle of chime cord ropeage		6	6	
			£	14	9

Paid Jan. 18. 1912.

s. s. n.

Jan. 2 12

Rev. W. & C. Cross-Cross

The Rectory, Bow

Nov. 8	To new clapper 24 lbs. at 10 ^s		1	0	0
	boxing + shooting clapper			2	0
	carriage to station			1	0
			£	1	3

Paid January 9th 1912

also sent
to Mr. J. Discombe
Helwell
Kenton on July 9. 1912

sent Jan. 3. 1912

Mr. H. Soper, Cliverston, Kenton

1911

			£	s	d
Oct.	10	To main time 12 hrs. screwing up bell fittings frame in Kenton Tower	8		0
		Railway fares			27
Paid July 22 nd 1912			£		10 7

sent Jan. 3. 1912

The Rector Churchwardens
of Enmore

1911

			£	s	d
Dec.	11	To main time 8 hrs. overhauling bells			
12. 13. 4	14	framework in Enmore Tower	8	2	17 4
		Railway fares			18 0
		Carriage of blocks			5 8
		Trap hire			5 0
		Smith repair ironwork			9
			£	4	6 9

Paid March 29. 1912

Mr. W. Abbott.

1911

£ s d

Oct.	5	1 man 4 hrs. take off trap springs		18
	6	putting on leaves to springs		47
		16 lbs. spring steel	3	40
		3. 3" x 3/8 bolts		3
		4 spring case clips		23
		2 ash blocks paint		3 1/2
	7	1 man 2 1/2 hrs. put on springs		10 1/2
	12	new clip to spring		10
	24	14' 0" of 7x1 floor	1 1/2	19
Nov.	13	1 man 2 1/2 hrs. repair trap shaft		10 1/2
		lengthen shaft plate		6
		1. 2 1/2 x 1/4 bolt, 3. 1 1/2" screws		2
	30	2 plates for trap lamps fix brackets		19
Dec.	1	51' 0" of 9x3/4 planed deal	2	86
		46' 0" of 2x1 batten		14 1/2

 £ 1 10 2

Paid March 7th 1912

Mr. Edgar Ware

7th

1911

Oct.	18	1 man $7\frac{1}{2}$ hrs. make side boards for cart					3 1 $\frac{1}{2}$
	19	1 man 1 day do					3 10
	20	1 man 1 hr. paint do					5
		18.0 of 12x1 elm	19.6	} 23-3	2 $\frac{1}{2}$..
		5.0 of 9x1 elm	3.9				
		4. 2x3/8 bolts					.. 4 $\frac{1}{2}$
		1 lb. nails					.. 2
		2 lb. paint					1 0
		8 plates, 4 staple, 4 tail iron pins, 4					..
		chains 20 rivets					6 0

 7 - 19 9

Paid Feb. 8th 1912

Mr. Westlake

1911

£ s d

Sep. 21 repair knob of door .. 6

Paid Feb^y 28th 1912

Oct. 4 Rev. M. H. Hayman £ s d
 1 man 2 hrs. repair hang casement
 glue up table fire screen .. 10
 1 pair 2" butts .. 4
 1 button screw .. 1
 10 screws glue .. 3

£ .. 16

Paid Jan 31 1912

Nov. 21 Mr. John B. Ashford
 1 man 3 hrs. put rail to gate in
 Ham Lane 13
 18' 0" of 2x3 1/2 elm rail 1 11 1/2
 2, 4 1/2 x 3/8 bolts .. 2 1/2
 1 lb. nail .. 2
 Car 2^d .. 2

Paid on page 451

£ .. 39

Nov. 23 Mr. H. Knott, Churchstile
 1 man 2 hrs. make double drop .. 10
 4' 6" of 3" x 3 1/2 ash 12

£ .. 20

Paid Feb^y 15th 1912

Mr. H. Langdon Fulford,

The Priory

£ s d

1911					
Dec.	18	1 man 1 day	make bench		4 0
	19	1 man 2 hrs.	do.		10
	20	1 man 8 hrs.	do.		3 4
		11-6"	of 4x3 deal legs	3 $\frac{1}{4}$	3 1 $\frac{1}{2}$
		4-6"	of 3x2 " bearers	1 $\frac{1}{2}$	7
		4-6"	of 3x2 " "	1	4 $\frac{1}{2}$
		4-6"	of 2 $\frac{1}{2}$ x1 $\frac{1}{2}$ " "	1	4 $\frac{1}{2}$
		2-3"	of 11x $\frac{1}{2}$ " box	2	4 $\frac{1}{2}$
		2-3"	of 7x $\frac{3}{4}$ " "	1	2
		2-6"	of 5 $\frac{1}{2}$ x3 ash vice	5	10 $\frac{1}{2}$
		42-0"	of 7x1 floor	1 $\frac{1}{2}$	5 3
		8. $\frac{3}{4}$	+ 4. 1 $\frac{1}{2}$ screws		2 $\frac{1}{2}$
		1 iron	screw		2 3
		1 iron	stop		16 $\frac{1}{2}$
		1 $\frac{1}{2}$ lbs.	nails		3
		1 plate	pin chain		10 $\frac{1}{2}$

£ 149.

Settled. Feb. 5. 1912

Mr. John Skinner, North Tawton

1911

£ s d

		to acc. rendered		1	6	5
Dec.	12	1 man 7 1/2 ^{7 1/2} hrs. hang sashes at R. Knotts				3 0
	14	1 man 7 1/2 hrs. do.				3 0
	15	1 man 6 hrs. do. J. Godfrey				2 4 1/2
	16	1 man 3/4 day do. do.				..
		+ repair gable window				2 9
	19	1 man 7 1/2 hrs. do. do.				3 0
	21	1 man 5 1/2 hrs. do. do.				2 2 1/2
	14.	6 lb. sash weights	4 1/2			5 3
	14	sash pulleys
	28.	3/4 screws	3			3 6
	2	Knobs of sash cord				2 0
	45-0	of 3/8 slip				1 7 1/2
	5 doz.	3/4 clouts				.. 2 1/2
	1-0	of 3 x 3/4 deal				.. 1
	4-0	of 1 1/2 x 3/4 "				.. 2
	10.	1" screws				.. 2
	1/2 lb.	paint				.. 3
	1	sash fastener				.. 7
			£			2 16 7

Paid April 16th 1912

Mr. W. Summerfield,

1911

£ s d

To a/c rendered

31 7 8

July 25 2 shoes

10

" 29 2 shoes

10

Aug. 3 3 stays

18

16 2 shoes

10

26 2 shoes

10

30 2 shoes

10

Sep. 16 2 shoes

10

Oct. 5 new flue 7 lbs

14

11 2 shoes

10

14 repair stop of stove

-3

25 2 shoes

10

Nov. 9 2 shoes

10

22 cutting pipe

-9

Dec. 4 2 shoes

10

29 2 shoes

10

£ 3237

1912
 Rev. W. M. Fairbairn, Losebeare Rectory £ s d

Jan.	To rehanging Losebeare Church Bells in a new oak frame as per contract of	48 16 0
	To clearing out old framework fittings as per contract of Oct. 5. 1911	1 10 0
		£ 50 6 0
	Received Feb. 5. 1912 on acc.	£ 42 0 0
	May 17 th 1912 - received the balance of -	£ 8 6 0

1912
 Rev. W. M. Fairbairn

Apr. 22	1 wrench	2 6
	1 oilcan	2 0
	postage	- 6
		£ - 5 0
	Paid, April 24. 1912	

Messrs. Jarman, Bros. Woodbury

1910

£ s d

Mar.	31	new pipe holdfast & new clip for outbuilding Public Hall			12
		repair stay band do.			10
Apr.	2	2 bands & 4 stays do.			20

£ 42

Paid Feb. 17. 1912

Mr. A. B. Phillips, Woodbury

1911

£ s d

May	31	7-0 x 1-11 x 1" elm board - 13-6" at			211
-----	----	--------------------------------------	--	--	-----

Paid Feb. 9. 1912

1911

£ s d

Oct.	4	Devon County Council Laundry Class To fitting pipe to ironing stove			20
------	---	--	--	--	----

Paid 17- Feb. 9. 1912

1908

£ s d

Dec.	1	Mr. P. Hall, Plumbers, Exmouth new part for stay at Worth's Villa			6
Feb.	8	2 bands & 8. 1 1/2" screws			10
Dec.	21	1 leather for sucker			6
		copper wire & clout			2
		shutting pump sucker			2

£ 22

Paid July 3rd 1912

Woodbury Public Hall Co. Ltd

1910

£ s d

Mar.	17	1 man 1/2 hr. put glass in lamp 1 pane 11 1/4 x 12	} - 7
Nov.	2	1 man 1 day rehang small room door	3 10
	3	1 man 1/4 day do.	.. 1 1/2
	4	1 man 3 hrs do.	1 3
		2' 9" of 3 x 3 1/2 oak play	3 4 - 8
		8' 6" of 6 x 2 deal stops	1 1
		1. 6" rim lock + 6. 1 1/4 screws	2 6
		Writing EXIT over doors 20 letters	1 0
	5	repairing stove	2 4
	7	new stopper & repair stove	1 6
	12	1 man 2 1/2 hrs. make & fix blind roller	
	16	1 man 1 1/2 hrs. do.	
	19	6' 0" of 1 1/2 x 1 1/2 deal roller	
		6' 0" of 1 1/2 x 1 1/2 lath	
		blind cord	
		1 set furniture, 1 rack	
	19	1 man 1 hr. make notice board painting do. & writing 46 letters	.. 5 1 0
		1' 4" of 7 x 3/4 + 4 screws	- 4
		writing 36 letters on lamp	1 6
	28	3 hrs. make rules frame	1 3
Dec.	3	1 man 2 hrs. repair chair 7. 2 screws	.. 10 - 2
	9	1 man 1 hr. put rap on door 2' 9" of 3 x 1/2 deal 9" of 1 1/2 x 1 1/2	.. 5 2
1911 Jan.	16	1 man 2 1/2 hrs repair chair 2. 2" + 2. 3/4" screws	1 0 1/2 - 2 1/2
May	1	1 man 1 day removing stones	3 2
	2	1 man 3 hrs do.	1 0
	3	1 man 1 day do.	3 2

forward

1 10 4 1/2

1911

£ s d

0		brst. forward	1	10	4½
May	4	1 man 2 hrs. removing stones			8
Nov.	4	22-0 of 2x1 planed batten for curtains } 1 hook bolt, + 2 brackets for do }			10 8
	24	1 man 3 hrs. repair table			3
		12. 1½ screws			2½
		2-3 of 7x2 deal			3½
		1 drawer key			3
		2-0 of 4x deal for bottom of door			
Dec	12	1 man ½ day make paths, hedge			17
	13	1 man 1 day do			3 2
	14	1 man 1 day do			3 2
	16	1 man 1 day do			3 2
	19	1 man 1 day do			3 2
	20	1 man 1 day do			3 2
	21	1 man ½ day do			17
	22	1 man ¼ day do			9½
	23	1 man 1 day do			3 2
	13	draw 2 loads gravel			2 6
	14	" 1 load "			1 3
	"	" 2 loads clay			1 6
	15	" 2 loads clay			1 6
	19	" 1 load gravel			1 3
	20	" 1 load gravel			1 3
	24	" 1 load clay			9
	28	" 1 load gravel			1 3
	30	" 1 load clay			9

£ 3 10 6

Paid December 9. 1912

Mr. W. Abbott.

Woodbury

1912

£ . d

		£	.	d
Feb.	9			10
			1	9
				3

1 man 2 hrs. repair garden fence
 1 sheet of iron
 nails & tar

£ . 2 10

Mr. Abbott to have 1/11 out of above

Paid Mar. 9. 1912

Mrs Northcote

1912

£ s d

Febr^y 23For making a Polished Glass
Coffin, with brass mountings for
the late Mr George Northcote.

Vicar & Clerks Fees -

Sextons Fees -

6 bearers - 1/6 each

2 15 0

3 6

4 6

9 0

£ 3 12 0

Paid March 2nd 1912

The Executors of the late Mrs. Glanville

1912

		£	s	d
Feb	24 th	For making an Elm shell lined with		
Feb	29 th	swansdown and satin, and an outer		
		painted English Oak coffin, with		
		heavy brass mountings, and carrying		
		out the funeral arrangements		
		9	0	0
			3	6
			5	0
			1	0
		1	8	0
			11	0
		£	11	8
			6	

Paid April 13th 1912

		The Executors of the late Mrs. Glanville		
July	5	To putting new pennant kerbing around		
		the late Mr. Mrs. Glanville's graves		
		4	14	6
		To cleaning & repairing headstone & painting		
		76 letters		
		1	3	10
		To cutting & painting 89 letters		
			14	10
		To fetching kerbing		
			5	0
		To cement, mortar & bricks		
			2	0
		To Vicars fees		
			10	6
		To Sextons fees for kerbing & sowing grass seeds		
			3	6
		To cleaning headstone & painting		
		222 letters		
			15	10
		To Sextons fees doing up 3 graves		
			3	0
		To fixing ^{removing} headstone		
			1	6

Paid July 22nd 1912

£ 8 14 6

27.3.12

Mr W. J. Price

Churchwarden, West-Buckland
Somerset

1912

Feb

16

For providing and fixing the Ellacombe
chiming apparatus to the 6 bells in
West Buckland Church as per estimate
of October 23rd 1911

9 5 0

To bringing the ~~new~~ chiming manual
to bottom of Tower and fixing door to
same with a lock and 2 keys
as per estimate of Nov^r 25th 1911

1 0 0

 £ 10 5 0

Paid April 10th 1912

The Churchwarden of Dolton

1912

Jan^{ry}

6th

To re-hanging the Treble bell, and
repairs to the other 5. work done according
to estimate of Sept^r 1st 1911

13 0 0

Paid April 20th 1912

28.3.12

Honble & Revd H. H. Courtney
Powderham

1912

Feb

To repairs to the Powderham Church
Bells according to estimate of Dec: 21-1911

£ 0 d
6 10 0

Paid June 5th 1912

28.3.12

Revd W. G. Cox

1911

Feb

Nov

7

2nd

The Vicarage, Dartington

Mr Stokes sent examine & measure Towers
To providing and fixing ropes stays
~~with~~ with ^{ropes} ~~ropes~~ (wood) fixed in them
in Dartington Church Tower

£ 0 d
" 12 0
" " "
" " "
4 18 0

5 10 0

Paid June 19. 1912

28.3.12

The Churchwardens of Sampford Courtney
Mr G. Snellett

Sept 1st 1913

1912

Jan

"

"

To new clapper to 2nd bell, and man's
time and rail fares going to Sampford
Courtney putting clapper in bell

£ 0 d
" " "
1 15 0

Paid Sep. 9. 1913

The Churchwardens of Tarnerton Foliot

1912

Jan^{ys} 24
29th

To new clappers for Tenor Bell, and
mans time and rail fares, going to
Tarnerton Foliot. taking out clappers
and overhauling bells

2 7 6

Paid April 8th 1912

Apr. 5. 12

1912

Jan^{ys} 29th

Rod W. Diving, Hemm

1 0 0

" 31

examining bells
2 mens time overhauling bells, ^{& frame} put

5 0

Feb^{ry} 1

in new pulleys, leathers in clappers

.

" 2

ash blocks, clapper box, chime cords
& time 58 hrs at 8^d

1 18 8

taking men and tools to Hemm and
fetching them

9 0

5 new pulleys

9 0

5 leathers for clappers

3 4

3 ash blocks

7

1 clapper box

1 0

20. large washers for frame

2 6

screws

3

5 chime cords

10 0

6 tubings for chime cords

4 0

43 6

Paid March 11. 1913

28.3.12

Mr Deland

Churchwarden, Sutton, Poltimore

£ 0 1

1912

Jan ^{ry}	11 th	To 3 Bell Ropes at 11/6 each	70	1 14 6
-------------------	------------------	------------------------------	----	--------

Paid April 12th 1912

28.3.12

Rev^d J. H. Harris

Cotleigh Rectory, Horton

£ 0 1

1912

Jan ^{ry}	12	To 3 Bell Ropes at 11/6 each	60/11	1 14 6
-------------------	----	------------------------------	-------	--------

Paid April 2nd 1912

28.3.12

Mr J. T. Miller

Maidenhayne, Murbury, Asminster

£ 0 1

1912

Feb ^{ry}	4 th	To 5 Bell Ropes each 70 feet long - 12/-		3 0 0
-------------------	-----------------	--	--	-------

Paid April 11th 1912

28.3.12

Mr Charles Bere

Churchwarden, Dunston, Silveston

0 1

1912

Jan ^{ry}	19	To 1 bell rope 70 feet long & carriage by Parcel post		12 6
-------------------	----	---	--	------

Paid April 2nd 1912

28-3-12

Rev. T. McCalland
The vicarage Exmouth

1912	Jan ^{ry}	19 th	To - 3 new bell ropes for Littleham bells church bells.	at 11/6	£ 0 d 1 14 6
------	-------------------	------------------	--	---------	-----------------

Paid March 29th 1912

28-3-12

Mr. W. H. Tucker. Fulham.

1912	March	15 th	To 6 bell ropes - for East Allington church bells	at 11/6	£ 0 d 3 9 0
------	-------	------------------	--	---------	----------------

Paid April 2nd 1912

28-3-12

1912	Feb ^{ry}	5 th & 9 th	The Rector & Churchwardens of St. George To man's time taking off broken stay and fixing new one to 5 th bell in St. George's Church - Tower	6 1/2 hrs	0 d 4 4 2 6
------	-------------------	---	--	-----------	-------------------

.. 6 10

Paid April 1st 1912

Woodbury Churchwardens.

				£	s	d
1911	July 11	2 men 2 hrs. ea. put in flag rope			1	10
		1 flag line			2	6
	Sep. 4	1 man 6 hrs. repair chime cords			3	0
		1 bdl. chime cord			7	0
		3 tubings			2	0
		2 nuts, thread rail			"	6
	Dec. 1	1 hr. put chain on gate (Lych.)	}		"	6
		1 padlock & 2 keys			1	6
		2 links 1 foot chain, 1 eye, 1 hr.		3/-	1	0
1912	Mar. 9	1 man 2 hrs. repair Church window	}		"	11
		1 lb of 13 x 1/2 deal			"	5
		nails & paint 2d		1/6	"	2
	15	1 man 2 hrs. put glass in Tower window	}		"	10
		1 pane 13 x 12 1/2 putty		1/3	"	5
				£	1	27

1-2-7
2-9
14-10

Paid April 3. 1912

Woodbury Churchwardens

1912	Jan. 19	3 1/2 hrs. repair glass in Vestry Room	}		1	5 1/2
		4 panes 12 1/4 x 9 1/2 ea.			1	2
		1 1/2 lbs. putty		2/10	2	1/2
	31	putting in 1 pane glass				9
				£	3	7

Paid April 3. 1912

1912 Rev. James Day. Brendon £ 0 d
 April To 4 bell ropes at 11/6^d ea. 2 6 0

Paid April 17. 1912

Apr. 22. 1912

The Vicar & Churchwardens of Rattery

~~1911 Dec. For supplying and hanging a new 5th bell (treble) ^{in Rattery Church tower} according to estimate of October 20th 1911 5 9 0 0
 bell 26^{lbs} less than estimate weight. at 1.3^d per lb. 1 12 6
 Total - £ 5 7 6~~

1911 Dec. Rev. Bernard Packer. Rattery £ 0 d
 To supplying changing a new fifth bell (a treble) in Rattery Church tower as per estimate of Oct. 20. 1911 5 9 0 0
 Credit by bell being 19. 26 lbs. 3 7 6
 less than the estimated weight 1. 26 at 1/3

Paid Apr. 29. 1912

£ 5 5 12 6

55 12 6

Mr. C. H. Stamp, Woodbury House.

1912

£ s d

Feb.	22	2 shoes on pony	1	0
		1 man 2 hrs. making whippletrees &	-	-
		2 staples	1	4
Mar.	12	soldering tub	-	4
	14	1 1/2 hrs. put in glass }	-	-
		1 pane 15 1/2 x 11 gummy }	1	3

£ . 3 11

Paid April 24 1912

Mr. W. Davy, Globe Hill

1912.

£ s d

Mar.	23	To cleaning, painting & lettering Headstone	-	-
			3	6

Paid June 10th 1912

sent to Rev. F. G. Buller
May 1. 1912

1912 The Rector Churchwardens of Oakford

£ s d

March. To rechanging the peal of eight
bells in Oakford Church Tower as
per estimate of October 28. 1911

" " "
" " "
70 0 0

Received on ac. May 13. 1912 £ 60.0.0
May 17th received the balance of £ 10.0.0

Up to May 21, 1912

H. W. Furnivall Esq.

£ s d

1912

		£	s	d
April	To cleaning off, stopping in & painting two coats all shutters, cornices & windows on outside of house as per contract of Mar. 26, 1910	11	0	0
Jan. 9	repairing front gate			19
Mar. 23	1 man 3 hrs. easing doors 4. 1" screws	5 1/2		14 1/2
26	1 man 2 1/2 hrs. put in sash cords 2 long sash cords & 12 clouts			12
				10
April 12	2 men 1 1/2 hrs ea. cutting creeper			14 1/2
19	1 man 2 hrs. put in sash cords 2 long sash cords & clouts			11
				10
23	1 man 9 1/2 hrs. repair field fence			44 1/2
24	1 man 7 1/2 hrs. repair stable window			35 1/2
	16-6 of oak for 3 posts for fence	2		29
	19-6 of 3x3 1/2 oak for 3 posts	3/4		53
	2 stakes oak 3-0 long ea.	2		10
	9-0 of 2x3 deal rail			9
	1 lb. nails			2
	3 doz. staples			9
	1-10 of 3 1/2 x 1 1/2 deal for stable window			3
	1-0 of 1 1/2 x 1 1/2 deal do.			1 1/2
	2 panes glass 11 x 9 ea. quantity &			8
	4. 1" screws			1 1/2
May 9	put plates on brake blocks, 4 screws			6

 £ 12 8 8 1/2

Paid May 22nd 1912

1912 S. Thomas Rural District Council

£ s d

Jan. 5	laying pick				1	6
	sharpen 1 pick					2
9	do.					2
11	do.					2
12	2 men 7½ hrs. ea. putting up a new footbridge at Rydon Lane					
	3 bolts & 16 nails			5½		6 10½
	2. 16' 0" of 9" x 4 deals - 32 ft.	7½				24
	3' 6" of 4½" x 3 oak bearers			9	1	40
	2' 0" of 2 x 3 deal			1½		14
	1 lb. nails					3
	Drawing material to Rydon Lane					2
						10
13	2 men 8½ hrs ea. fix rail post & 3 spur posts at Ford Water					
	9' 3" of 5" x 4½" oak for 3 spurs			7¾		79½
	5' 3" of 6" x 5½" do. 1 post			11		60
	9' 0" of 4½" x 3 deal 1 rail			3½		410
	1 lb. nails					27½
	tar & paint					2
	Drawing material to Ford Water					6
						6
15	2 men 10 hrs. ea. put new planks & posts at Creally Bridge					
	2. ¾ bolts & 2 spikes					92
	2. 11' 0" of 9" x 3 deals, 22 ft.			7		24
	15' 0" of 4" x 3 oak post bearers			4		1210
	2 lbs. nails					50
	5' 3" of 7" x 2½" deal repair old plank			4		4
	10' 0" of 2 x 1 elm raps					19
	Drawing material to Creally Bridge					5
17	1 man 4½ hrs. make stakes Wotton Brook					20
	6. 4 ft. stakes oak					60
	8 spikes					16

forward

£ 5 18½

sent June 17 '12

S. T. D. R. C.

1912

£ o d

		forward		5	18½
Jan.	16	turning 1 pick			2
	22	1 man 2½ hrs. measure bridge at Spain			12
	23	1 man 10 hrs. prepare paint rails & posts for do			47
	30	2 men ½ ea. repair rails bridge do			88½
		7.0 of 3x2 oak post 2	2		12
		11.0 of 4½x3 do. 2	4½		41½
		8.0 of 4x3 do. 2	4		28
		4.0 of 7x4½ 2 oak bearers	10¾		37
		43.0 of 3x2 deal 3 rails	1½		54½
		4.0 of 1½" hoop iron, 1½ doz. clut			5½
		3 spikes			6
		2½ lbs. paint			13
		2 lbs. nails			4
		Drawing material to Spain bridge			26
	24	10. 8ft. cleft oak stakes for brook near Anns Barn (9½ hrs)			100
	31	sharpen pick			2
Feb.		repair 1 pick			10
Feb.	2	sharp pick			2
Feb.	10	2 men 4 hrs ea. put in 2 posts at & alter rails at Ford Water			38
		5.6 of 6x5½ oak post	11		50½
		tar & paint			6½
		Drawing material to			6
	14	sharp pick			2
	28	do.			2
		laying pick			16
Mar.	7	do.			16
	27	sharp pick			2
May	14	sharp pick			2

Paid July 9. 1912

£

8 13 0½

Rev^d T. W. Little. The Vicarage, St. Mary Church

1912

April	15	2 men 11 hrs each at 8 ^d -	22 hrs	14 8
	16	2 men 11 hrs " " "	22 hrs	14 8
	17	2 men 11½ hrs " " "	23 hrs	15 4
	18	2 men 11½ hrs " " "	23 hrs	15 4
	19	2 men 11½ hrs " " "	23 hrs	15 4
	20	2 men 9 hrs " " "	18 hrs	12 0
		lodgings		10 0
		rail fares, train & bus -		13 1
		smith at Mary Church		2 10
		carriage of shear legs, chain block &c		" "
		to & from St. Mary Church -		" "
		carriage to Exeter by carrier		1 3
		do - to Torre, 2.4. delivery to St. Mary Church 10		3 5
		do from Torre to W. R. 2.10- do to Woodbury 1.3		4 1
				6 2 0
		To - 8 telescopes each 40 feet long at 12/-		4 16 0

1912 April 15 to 20th To men's time and rail fares, carriage of shear legs and chain blocks, overhauling the frame, and ^{lifting out the} 8 bells from their bearings, leveling up bearings, and earing gudgeons, repairs to ironwork, pulleys & chime hammers &c

Paid July 18th 1912

Mrs. Bird, "Heatherdeane", Woodbury, £ s d

1912

May	24	To making an elm shell for the late	"	"	"
15	29	Rev. Godfrey Bird and an elm outer	"	"	"
		Coffin with black furniture and a	"	"	"
		full length oak cross, painting name	"	"	"
		on lid, fetching & returning lies	"	"	"
		to Lympestone Church and carrying	"	"	"
		out the funeral arrangements	10	10	0
		To Vicar's Clerk's fees	-	3	6
		To Sexton's fees	-	5	0
		To six bearers	1	10	0
			£	12	8 6

Paid August 2nd 1912

bill to be sent to Mr H. E. Goodland
 Barnards
 Tibbury

Rev^d J. A. Prendergast, Vicar of Tibbury

1912

March 27	To 6 bell ropes at 14/6 per rope	£ 3 9 0
	To carriage of " do "	" 1 9
		<hr/>
	Paid Sept 9 th 1912	£ 3 10 9
		<hr/>

Mr A Goodman, Sunny mead

1912	The Churchwardens of South Brent	£ 0 0
April 25	To 6 bell ropes at 14/6 per rope (60 ft)	3 9 0
June 28	To six muffs	1 1 6
		<hr/>
		£ 4 10 6
	less carriage	1 9
		<hr/>
	Paid Oct. 22. 1912	£ 4 8 9

Mr Philip Cole, (Churchwarden)

Langtree Wick, Torrington

The Rector & Churchwardens of Langtree

1912		£ 0 0
May 21 st	To 6 bell ropes, each 90 ft long at 12/- each	3 12 0
		<hr/>
	Paid July 4. 1912	

Rev^d B. H. Cary, Truham Rectory

1912		
May 21	To - 1 bell rope 60 feet long and	0 0
"	postage -	11 6
		<hr/>
	Paid Oct. 8. 1912	

L. C. Vaughan Esq
 Barton Grange
 Taunton

The Churchwardens of Corfe

£ s d

1912	June	11 th	To 2 bell Ropes at 11/6 per rope Postage by Parcel post-	1	3	0
						8
						<hr/>
						1 3 8
						<hr/>
Paid July 1 st 1912						

Mr John Tucker
 Castle Street Farm
 Georgeham

1912	June	12	The Churchwardens of Georgeham - to 6 bell ropes at 11/6 per rope (60ft-)	3	9	0
<hr/>						
Paid July 26 th 1912						

The Rector & Churchwardens of Framington

1912

May	20	2 men 11 ^h each overhauling bells	22 ^h at 8 ^d	14 8
	21	2 men 11 ^h do do	23 ^h at 8	15 4
	22	2 men 11 ^h do do	23 ^h at 8	15 4
	23	2 men 11 ^h do do	23 ^h at 8	15 4
	24	2 men 11 ^h do do	23 ^h at 8	15 4
	25	2 men 8 ^h do do	16 ^h at 8	10 8
		rail fares		16 2
		Trap to & from station with tools		2 6
		Paint 9 ^{lbs}		4 6
		Linseed Oil, s.b, sweet-oil 6 ^d		2 0
		chine cords - 8 ^{lbs}		8 0
		5 Tubings for chimes -		3 6
		man help up wheels		" 5
		Smith -		10 0
		2 clapper boxes		2 0
				<hr/>
				6 15 9

May 20th to 25th - 1912 To mens time, and rail fares overhauling the peal of 6 bells in Framington Church Tower, new chinning ropes, and tubing, leveling up bells, casing gudgeons upain to ironwork, and clappers, new leather to clapper, paint-ironwork, stocks and oiling wheels &c

Paid. July 2. 1912

Rev^d H. H. Harvey
Overage, Clawton

1912

May	6	1 man 10 hrs	at 8 ^d	6	8
	7	1 man 11 hrs	" 8	7	4
	8	1 man 11½ hrs	" 8	7	8
		railway fares		8	10
		Trap to W. Rd twice		2	4
		Trap to Clawton from Holoworthy		2	6
		Lodgings		2	0
		Smith at Clawton		3	2
		carriage of chain blocks to & fr		3	6

240

To main time, railway fares and trap hire, alteration to ironwork carriage of chain blocks & boring and re-hanging the 3rd bell in Clawton Tower

Paid Sept^r 3rd 1912

Mr. John Glanville, Rydon Hill.

1912

£ s d

Jan. 18	1 man 7½ hrs. ring trap wheel	3	1½
19	1 man 3½ hrs. do.	1	5½
20	1 man 5½ hrs. repair trap	2	3½
22	1 man 1 hr. paint wheel	..	5
	24. ½" screws, 14. 1", + 3. 2" do.	..	6
	4 plates of iron	..	6
	1. 3" x 3/8" + 2. 1" x 1/4 bolts	..	2½
	7. 2 ash fellows	2	4
	½ lb. paint	..	3
	1 new tyre on wheel	8	3

£

19 4

Paid July 31st 1912

Rev. J. B. Housman, Farringdon

£ s d

1912					
Dec.	28	1 man 3 1/2 hrs. measure for shelves			1 7 1/2
	29	1 man 7 1/2 hrs. make library shelves			3 5 1/2
	30	1 man 8 hrs. do.			3 8
1912 Jan.	1	1 man 7 1/2 hrs do.			3 5 1/2
	2	1 man 1 hr. stain do.			.. 5 1/2
	3	1 man 1 hr. do.			.. 5 1/2
	6	1 man 4 hrs. do. varnish do.			1 10
		12-0 of 11x1 deal	3		3 0
		20-0 of 9x1 "	2 3/4		4 7
		19-0 of 11x 1/2 "	2		3 2
		2 bottles of varnish stain			1 0
		sire		1-6-10 1/2	- 3 1/2
				£	1 7 0
Jan.	2	1 man 10 hrs. make drawing room shelves			4 7
	3	1 man 10 hrs. do.			4 7
	4	1 man 9 1/2 hrs. do.			4 4 1/2
	5	1 man 9 1/2 hrs. do.			4 4 1/2
	6	1 man 5 hrs. make & paint do.			2 3 1/2
		6-6 of 11x1 deal	3		1 7 1/2
		6-6 of 8x1 "	2 3/4		1 6
		9-0 of 9x1 "	2 3/4		2 1
		17-6 of 7x1 "	1 3/4		2 7
		20-0 of 11x 1/2 "	2		3 4
		sire & 1/4 pint enamel			- 14
		3 lbs. paint		1-13-7	1 6
				£	1 13 9
Jan.	6	1 man 5 1/2 hrs. prepare shelves, hat peg rail r.		
					2 6
	8	1 man 9 hrs. fixing shelves, hat pegs, bookshelves r.		
					4 1 1/2
	"	1 man 4 hrs. do. do.			1 10
	9	1 man 9 1/2 hrs staining floors r.			4 4 1/2
		forward	£	3 13 7	

1912

£ o d

		forward		3	13	7
Jan.	10	1 man 9 $\frac{1}{2}$ hrs. varnishing floors R			4	4 $\frac{1}{2}$
	11	1 man 9 $\frac{1}{2}$ hrs. do. easing window put in glass R				
		1 pane glass 1-8 x 1-0 putty				8
		9.6 of 2 x 1 latten cupboard shelves				4
		10.0 of 11 x 3/4	2i		2	1
		4 iron brackets			2	0
		12, 3/4" & 12, 1" screws				4
		6.0 of 3 x 1" hat peg rail				4 $\frac{1}{2}$
		6, 2" brass screws				2
		1/2 lb. pine				4
		1/4 lb. stain				8
		1 quart varnish			3	10
		Horse waggon delivering shelves R			2	0
Apr.	23	1 man 9 $\frac{1}{2}$ hrs. repair windows & pic sash fasteners				
		2 sash fasteners & screws				16
		16. 1" & 1 1/2" screws				3
				£	5	13

Paid July 11th 1912

1911

£ o d

	book forward			4	13	4 1/2
	4-3 of 4x2 ash	4	2 3/4			11 1/2
	4-9 of 4x2 1/2 "		3 1/2			15
	12-0 of 15x1 1/2 elm	15 pr.	3 3/4			48 1/2
	12-0 of 9 1/2 x 1 "	9-6	2 1/2			20
	3-6 of 15x1 "	4-6	2 1/2			11
	4-0 of 12x1 "		2 1/2			10
	5-0 x 3-9 of 1" elm	18-9	2 1/2			3 11
	10-9 of 11x3 1/2 ash		1 1/4			11 7
	4-3 of 3 1/2 x 3 "		3 1/2			13
	4-3 of 3 1/2 x 2 "		2 1/2			10 1/2
	2-0 of 6x3 elm		3 3/4			7 1/2
	3-3 of 1 1/2 x 1 1/2 ash		3/4			2 1/2
	2-6 of 6x2 elm		2 1/2			6
	1 new back chain					16
	2. 5x1/2 bolts					4
	4. 5x3/8 "					4
	2. 3 1/2 x 3/8 "					2
	16. 2 1/2 x 3/8 "					10
	16. 3/4 screws					25
	13. 1" "					2
	1 1/2 lbs. nails					3
	4 plates, 2 tail pins, 2 staples & chain					1 10
	cart ironwork 10 lbs.					3 4
	2 rings					2
	1 large washer					3
	cart ironwork 48 lbs.					16 0
	eye hook & 20 rivets					10
				£		79 8
Jan.	1	1 shear				7
Apr.	22	2 do				1 1/2
May	21	2 do.				1 1/2
		carried to page 18 new book		£		7 11 11

Mr. S. Miller, Woodbury

1912

Z s d

Jan.	1	2 men 8 hrs. ea. take down shed			74
	2	2 men 8 hrs. ea. fixing shed			68
	3	2 men ^{9 1/2} hrs. ea. do.			74
	4	2 men 5 hrs. ea. do.			78
		16'-6" of 9" featheredge			47
		7-0 of 9x3/4 deal	2		27
		1 1/2 lbs. nails			12
	12	sharpen 1 large r. handsaw			11
Feb.	3	2 lbs. nails			12
	7	2 gate hooks			- 4
Mar.	1	new nut 10 bolt.			- 6
	9	small staple			- 2
					- 1

 £ 1 14 10

Paid Sep. 19. 1912

Mr. Richard Davey

May	18	new handle 10 plate ripper			13
	22	sharp knobell			- 2
June	8	make dutch hoe			- 4

 £ 19

Paid August 3rd 1912

Rev. J. L. L. Tuleford

1912

F o d

Jan.	1	1 man 4 hrs. make ladder		1 8
	2	1 man 2 hrs. do.		10
	3	1 man 7 1/2 hrs. do.		3 1 1/2
	4	1 man 1 day do. of paint		3 11 1/2
	5	1 man 2 1/2 hrs. do. do.		10 1/2
		4 bolts for ladder		8
		1 pole		3 6
		18 oak rounds		16
		1 1/2 lbs. paint - 18 lbs at 11 - 16/6	16 6	9
	5	1 man 1 1/2 hrs. casing study door		8 1/2
Feb.	8	1 man 2 hrs. examine W.C.		7 1/2
	20	1 man 4 hrs. fixing do. pan		11
		1 man 8 1/2 hrs. do. repair floor, walls &c.		10
	21	1 man 7 1/2 hrs. make fire pipe casing		110
		fixing seat of W.C.		8
		1 mason 9 hrs. repair rebt. W.C.		47 1/2
	22	1 man 1 hr. paint casing & door		47 1/2
		1 pedestal W.C. pan		3 5 1/2
		1 seat, bolts & plugs		2 1/2
		11. 9x9 red flooring tiles		4 10 1/2
		2-4 collar pipe		5 1/2
		7 lbs. red lead & putty		12 0
		1 peck of cement		4 8
		1/2 bag of old do.		4 8
		1 peck plaster		3 8
		1 barrow hair mortar		1 4
		4 lbs. Hall's distemper		2 4
		1/2 bucket, putty line		1 6
		7-3 of 7x3/4 floor board		1 6
		7-3 of 9x3/4 do.		1 6
		1 lb. paint		8
		1/2 lb. nails		1 4
				4
				3 8
				1 4
				2 4
				1 6
				1 6
				8
				1 4
				4
				7 1/2
				12 1/2
				6
				1
		forward		3 6 7 1/2

£ s d

1912

		£	s	d
	brk. forward	3	6	7½
Mar	13 1 man 2 hrs. repair pump handle new part 1/2 handle		10	
	14 1 man 1½ hrs. repair castors of chair		20	
	18 1 man 2 hrs. put new castors on sofa 4 castors. 6 brass screws		10	
	28 1 man 4 hrs. take off old & put on new castors on dining table 4 castors & screws		10	
Apr.	16 1 man 1 day put new gutters in roof		54	
	17 1 man 8½ hrs. put in do. rafters & battens		44½	
	19 1 man 4 hrs. repair roof wall plate		311	
	32-0 of 3x2 rafter		28	
	76-0 of 7x1 gutter		23	
	2-0 of 7x2½ plate		9	
	4 lbs. nails, 1 shute screws		8½	
	22 1 man 1½ hrs. refix plumbing		72	
June	8 clearing flush cistern		6	
		£	4	18 7½

Paid July 13th 1912

1912 Mr. William Stamp

£ s d

Jan.	1	4 shoes	2	4
		2 1/2 hrs. leather trap wheels	1	0
		2 large & 2 small collars	1	6
	4	fasten 1 shoe	..	2
	26	fasten 3 shoes	..	6
Feb.	1	8 shoes	4	8
		2 removes	..	7
	5	1 shoe	..	7
	10	1 shoe	..	7
	22	repair sword of cart	1	0
	28	4 shoes on horse & paving feet	3	0
Mar.	2	2 shoes	1	2
	4	3 shoes	1	9
	6	2 shoes	1	2
	14	1 shoe	..	7
	18	2 shoes & fasten 2	1	4
Apr.	1	fasten 2 shoes	..	4
	9	1 shoe	..	7
May	7	new scroll iron & putting on trap	3	0
	18	2 shoes	1	2
	28	4 shoes	2	4
June	8	2 shoes	1	2

£ 1 10 6

Paid August 22nd 1912

Mrs. William Stamp

Z o d

1912

April	24	1 man ^{9 1/2} hrs. today paint room		4 45
	25	1 man ^{9 1/2} hrs. today do.		4 45
	26	1 man 2 hrs. do.		1 10
		4 lbs. paint		2 0
	29	1 man 5 hrs. paper room	2/6	
	30	1 man 5 1/2 hrs. do.	2/8 1/2 hang 8 pieces paper at 8	5 4
May	1	1 man 3 1/2 hrs. do.	1/5 1/2 " 22 yds. piece 1	1 10
		paste	6	
		8 pieces paper	4-	8 0
		22 yds. 10" piece	6	11 0
	2	1 man 7 1/2 hrs. stop in retain floor		3 5 1/2
	3	1 man 4 hrs. hang pictures in side floor		1 10
	4	1 man 2 hrs. varnish floor		1 10
		3 oss. plain		6
		1/4 lb. size		2
		1 pint Varnish		2 0
		putty for stopping		3 1/2
				<hr/>
				2 7 0.
				<hr/>

Paid August 22nd 1912

Mr. Henry Glanville, jr.

1912

£ s d

Jan.	10	1 man 7 hrs. put in posts & change gate at Winsor	2	11
		1 lab. 7 hrs. do. do.	2	4
		1 staple 5.5	-	2
Feb.	10	1 man 5 hrs. repair waggon	2	1
	12	1 man 1 day do.	3	9
	13	1 man 1 day do.	3	9
	14	1 man 1 day do.	3	9
		2 bolts + 3 plates	.	8
		repair ironwork	1	6
	15	1 man 1 day do.	3	9
	"	1 man 1 day ring waggon wheels	3	9
	16	1 man 3 hrs do.	1	3
	"	1 man 1 day repair waggon	3	9
	17	1 man 1 day do.	3	9
	"	1 man 1 1/2 hrs. ring wheels	-	7 1/2
		3. 6 x 1/2 bolts 1 1/2 lbs.	.	6
	19	1 man 1 day repair waggon	3	9
		1 man 1 day ring wheels	3	9
		repair ironwork	1	0
	20	1 man 6 1/2 hrs. ring wheels	2	8 1/2
	21	1 man 5 hrs. do.	2	1
	22	1 man 8 1/2 hrs. do. + repair waggon	3	6 1/2
	"	1 man 1 1/2 hrs. make shafts	.	7 1/2
	23	1 man 4 hrs. do.	1	8
	24	1 man 3 hrs. do.	1	3
		1 new tyre 39 lbs.	9	9
		put on one tyre	2	6
	26	1 man 1 1/2 hrs. make shafts	3	9
	28	1 man 1 day do.	3	9
	29	1 man 1/2 day do. 3-19-8.	1	10 1/2
	"	1 man 3 1/2 hrs. paint waggon	1	5 1/2
Mar	1	1 man 8 hrs. do. 7.3-19-8	3	4
		forward	4	5 1

1912

£ s d

		brot. forward	£ 3-19-8	4 5 1
Mar.	1	1 man 1 day make shafts		3 9
	2	1 man 1 day make + paint do.		3 9
		1 man ½ day paint waggon		1 10*
		8 bars for shafts		1 3
		3 links in back chain + repair ironwork		.. 10
		crook for lade		.. 2
		material used for waggon page 132		2 2 0*
	4	1 man 1 day paint waggon		3 9
		1 man 2 hrs. do.		.. 10
	5	1 man 8 hrs. paint waggon, black ironwork		.. "
		+ lettering waggon		3 4
	6	1 man 2 hrs. put on wheels		.. 10
		To ringing 2 wheels, putting on new		.. "
		tyre, & one old one, putting new bottom,		.. "
		new tops, sides, new pair ash shafts		- "
		repairing lades, and repairing ironwork		- "
		woodwork of waggon and painting it		- "
		all two coats	£	7 2 0
Mar.	12	1 man 5 ½ hrs. make stone roller frame shafts		2 3 ½
	13	1 man 1 ½ hrs. do. do.		- 7 ½
	14	1 man 1 day do. do.		3 9
	15	1 man 8 ½ hrs. do. do.		3 6
	16	1 man 1 day do. do.		3 9
	18	1 man 1 day do. do.		3 9
	19	1 man 1 hr. do. do.		.. 5
	23	1 man 2 ½ hrs. paint do.		1. 0 ½
	25	1 man 2 hrs. do. do.		.. 10
		11-6 of 13 x 3 ½ oak shafts	1-3 ½	14 10 ½
		4-6 of 10 x 4 oak ends	1-7 ½	5 1
		7-6 of 5 ½ x 4 oak frame	£ 2-4 3 ½	4 4 ½
		forward	£	9 11 8 ½

1912

£ o d

forward

£ 2. 4. 3 1/2

9 11 8 1/2

13-3 of 4x4 oak frame

5 1/2

6 2 1/2

9.0 of 4x2 1/2 "

3 1/2

2 7 1/2

4. 5x 1/2 bolts

8

3 1/2 lbs. paint

1 9

13 1 man 7 1/2 hrs. get-out gudgeon

3 1 1/2

new gudgeon & put in

4 0

repair 4 eyes & bars

1 0

~~4~~ 2 crooks, 2 wangs, 2 long staples,

" "

2 staples & 2 bolts

2 4

£

3 6 0

Mar. 19 1 man 5 hrs. make wood roller shafts

2 1

20 1 man 8 hrs. do. do.

3 4

25 1 man 6 hrs. repair roller frame

2 6

2 bolts & repair 4

.. 9

2 bolts, 1 wang & repair ironwork

1 6

2. 7 1/2 x 1/2 bolts, shooting band, 6 wedges

" "

& lengthen bolts

11-6

1 4

11 6

May 24 repair pump handle, 2 bolts & key

1 10

£

11 6 9

Paid November 4th 1912.
less 10/- for Rent

Mrs. T. Gilmill, The Brewery, Woodbury

1912

£ s d

Jan.	18	1 man 5 hrs. put on door handles, + lock on Mrs. Squires door		2 3 1/2
				2 1
	19	1 man 6 hrs. put on drip board + repair door at Mrs. Squires		2 9
				2 6
		1 set of white china door furniture		1 6
		2' 6" of 4 x 1 1/2" deal at Mrs. Squires	2	- 5
		2' 6" of 9 x 3/4 " "	2 1/4	- 5 1/2
		2' 6" of 5 1/2 x 1 " "	1 1/2	- 4
		6. 2" screws		.. 1 1/2
		1. 6" rimlock complete		2 6
		1/2 lb. paint		.. 3
				3 5 1/2
Mar.	14	1 man 7 1/2 hrs. repair kitchen mantelpiece		3 1 1/2
	15	1 man 7 1/2 hrs. do. + put up match board		3 5 1/2
	16	1 man 6 hrs. repairing		2 9
		7' 6" of 3 x 2 deal stud		7 1/2
		32' 6" of 7 x 3/4 match	1 1/4	3 4 1/2
		4' 9" of 9 x 1 deal jamb mantelpiece	2 3/4	1 1
		6' 9" of 7 x 1 floor		.. 10
		1' 0" of 7 x 1 1/2 deal		.. 3
		2 lbs nails		.. 4
		3' 0" of 1 1/2" moulding		.. 2
		6' 6" of 7 x 3/4 porchelf		.. 6 1/2
				3 5 1/2
	18	1 man 7 1/2 hrs. hang top window sash		3 1 1/2
	19	1 man 7 hrs. take off locks, ease doors +		3 2 1/2
				2 11
	20	1 man 1 day paint bedroom		3 10
	21	1 man 1 day do. + put down linoleum		3 10
	22	1 man 1 day put on locks, + paint bedrooms		3 10
	23	1 man 1 day paint bedrooms		3 10
		4 sheets glass paper		.. 2
		2 sash pulleys + screws		.. 6
		2. 8 1/2 lbs. sash weights		1 2
		2 sash cords, belouts		.. 8
		forward	£	2 12 0

1912

£ s d

	forward	2	12	0
	1 each fastener			7
	1. 6" rim lock complete ✓		2	6
	1 S.C. latch		1	4
	1 low latch		1	0
	10-0 of ptg. slip			4 ¹ / ₂
	7 lbs. paint		3	6
Mar. 25	1 man 1 day repair stair window		3	10
	1 man 1 day paint staircase		3	10
	1 man 1 day hang bedroom paper		3	10
	1 man 5 hrs. take out wall & make jambs		2	1
26	1 man 1 day repair stair window		3	10
	1 man 1 day make door jambs		3	10
	1 man 7 hrs. painting stairs		2	11
	1 man 8 hrs. paper bedroom		3	4
27	2 men 1 day ea. paint stairs front door		7	8
	1 man 1 day make jambs door		3	10
	1 man 2 ¹ / ₂ hrs. paper bedrooms		1	0¹/₂
28	2 men 1 day ea. painting staircase		7	8
	1 man 7 ¹ / ₂ hrs. make door		3	5¹/₂
29	2 men 1 day ea. painting staircase		7	8
	1 man 7 ¹ / ₂ hrs. hang door put on stops 13		3	5¹/₂
30	1 man 1 day paint front door & fix furniture		3	10
	1 man ³ / ₄ day fix blinds & furniture		2	10 ¹ / ₂
	1 man 3 ¹ / ₂ hrs. glaze hang door		1	7¹/₂
	2 ¹ / ₂ lbs. buff paint		10	6
	framing staircase & door		14	0
	6. 1 ¹ / ₂ " & 6. 1 ¹ / ₄ " screws staircase window		"	2
	8' 0" of 7" x 3 ³ / ₄ " deal		"	8
	5' 0" of 11" x 3 ³ / ₄ " "		"	10 ¹ / ₂
	¹ / ₂ lb. nails, belouts		"	2
	2 panes glass 14" x 3 ³ / ₄ " ea.		"	3
	¹ / ₂ lb. putty		"	1

forward

£

7 19 9

1912

£ s d

	forward		7	19	9
	9' of 5x1 1/2 deal, 3, 1 1/2" screws				2
	1, 3" brass butt. for counter				4
	1/4 lb. rise				2
	13 pieces wall paper for bedrooms				10 10
	1 bucket paste				6
	7-0 of 5x1 deal jambs				10 1/2
	16-0 of 4x3 "	3 3/4			4 4
	3-3 of 4x3 oak sill	4			1 1
	16-6 of archit. mldg				1 1
	7-6 of 4 1/2 x 1/2 deal stops				3 1/2
	16-0 of 7x1 1/2 " door	3			5 0
	4-3 of 11x 1/2 - panels	2			8 1/2
	12-0 of panel mldg				6
	1 1/2 lbs. nails				3
	1 pair 3" butts. & screws				5
	2 panes of ground glass				3 6
	13-0 of 1/2" beading				6
	1 lb. priming				6
	1. 6" rim lock complete				2 6
April	1 man 1 day paint door jambs & furniture				3 10
	graining staircase & door				3 10
	2 man 1 day put lock on door, paint door				-
	& varnish landing				3 10
	3 man 1 day varnishing				3 10
	4 man 1 day varnish front door, repair				-
	paper & put up beds r:				3 10
	3 1/2 pints varnish				6 8 1/2
	8. 3/4 brass screws				1 1/2
	1 1/2 lbs. paint for new door				9
	11 man 6 1/2 hrs. papering staircase				3 0
	12 man 8 1/2 hrs. do.				2 8 1/2
	forward	£	11	3	1 1/2

1912		£	s	d
	forward	11	3	1½
Apr. 13	1 man 4 hrs. removing beds &c		18	¹⁰
	8 pieces wallpaper		10	0
	1 bucket paste		..	6
Mar 26	1 man 6 hrs. repair spring cart		26	²⁹
27	1 man 4 hrs. do.		18	¹⁰
	repair spring clip & set axle		1	0
	3-9 of 7x1 elm plate		..	6
	1. 4½x3/8 bolt, 12. 2" nails		..	2
	6 oss. leather for collars		..	10
	½ lb. paint		..	3
	1-0 of 2x3 ash		..	2
28	1 man 6 hrs. repair waggon		26	²⁹
29	1 man 4 hrs. do.		18	¹⁰
	4 plates		1	8
	repair tail iron		..	6
	1-3 of 4½x3 ash brake blocks		..	6
	7-2 screws ^{1½} , 1. 6x½ bolt ^{1½} , 8. 2x¼ and } 6. 1½x¼ bolts ⁵		..	12
	altering names in cart & waggon		..	9
Apr. 9	1 man 7½ hrs. make mach stick		31½	^{35½}
	1-6 of 7x1 oak		4	
	6-6 of 2x1½ ash		6	½
June 11	1 man ½ hrs. put in pane of glass } 1 pane glass & putty		1	2
		£	12	17 7 ½
	November 2 nd 1912 Received of account —	£	7	10 0
	left due	£	5	7 7 ½

Miss Dobson Woodbury

£ s d

1912

Jan.	25	To furniture removing as agreement	1	10	0
	26	To man time easing doors. laying linoleum etc		2	0
Apr.	9	To repairing cabinet		1	0

Paid August 16th 1912

£ 1 13 0

Mr. Ferris-Kerr Esq. Oakhayes

£ s d

1912

Feb ^{ry}	9	1 man 2 1/2 hrs. repair stable barrow		1	2
	10	1 man 1 hr. do.		..	5 1/2
		6-6 of 1 1/2 x 1 1/2 elm		..	3 1/2
		1/2 lb. nails		..	1
		2-0 of 2 1/2 x 2 1/2 ash leg		..	4 1/2
		paint	2/9	..	4 1/2
Mar.	18	sharpen crescent saw		..	9
May	9	3 lb paint		1	6
June	5	new bolt & fit to shears		..	9

£ 5 9

Paid July 10th 1912

Miss Lear

£ s d

1912

Feb.	19+21	To shifting Piano		2	0
------	-------	-------------------	--	---	---

Paid. Sep. 21. 1912

1912 Mr. W. C. Abbott.

		£	s	d	
Jan.	26	1 man 7½ hrs. take off springs & repair shaft	3	5	½
	27	1 man 4 hrs. do do	1	10	
	29	1 man 3½ hrs. putting on springs	1	7	½
		6. 1¼ screws, 1. 2½ x 3/8, 1. 2 x ¼ bolt		3	
		ash 3", paint 2"		5	
	26	take springs to pieces & repair	1	6	
	27	2 plates & rivets for shafts	1	6	
	30	fitting new leaf to spring	1	6	
		new top leaf of spring	3	6	
June	24	1 man 4 hrs. put felloe in trap wheel	1	10	
	25	1 man 2 hrs. do.		11	
		1. 2" ash felloe. paint		5	
		shooting & putting on 2 trap wheel			
		tyres & rivetting them	5	0	
			£	1	40

Paid October 29th 1912

Mr. W. Summerfield.

1912

£ s d

To acc. rendered

32 3 7

Jan. 8 2 shoes

10

Feb. 7 2 shoes

10

17 2 shoes

10

Mar. 13 2 shoes

10

Apr. 13 1 shoe

6

29 1 shoe

6

May 22 2 shoes

10

June 21 3 shoes

16

29 1 shoe

6

£ 32 11 7

July 29 3 shoes

16

Aug. 23 4 shoes

20

Sep. 20 1 shoe

6

£ 32 15 7

Settled by Contra acc 7-10-2-5½

Cash

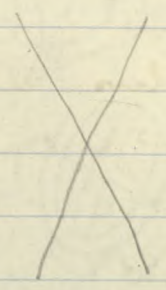
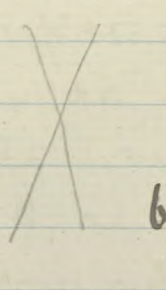
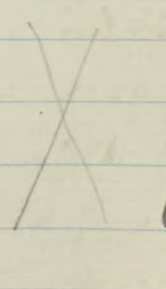
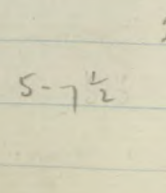
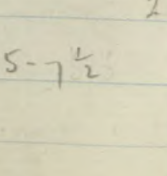
22-13-1½

May 29. 1913

C. Davey Esq. Knoll Cottage

1912

£ s d

Feb.	13	2 men 1 1/2 hrs. ea. take off W.C. pan			1 4 1/2
	20	1 man 3 hrs. fit pan			1 4 1/2
		Self 2 hrs. do.			1 0
	22	Self 3 hrs. at Remouth about-bend			1 6
	27	1 man 5 hrs. fit pan & seat			2 3 1/2
		1 W.C pan & fibres			17 6
		1 lead bend			2 9
		2 1/2 lbs. red lead putty			.. 10
		4. 2" brass screws			.. 1 1/2
		4 rubber washers		£ 1 9 6	.. 3
		piece of zinc, plaster, lime & paint			.. 6
Mar.	16	1 man 2 hrs. make frame			.. 11
	18	1 man 1 1/2 hrs. do.			8 1/2
		17' 0" of 11 x 1 deal			4 3
		2' 0" of 2 x 2 1/2 "			2 1/2
		1 lb. nails		6/3	2
April	1	1 man 4 1/2 hrs. plane raps			2 1 1/2
		16' 0" of 11 x 1/2 deal			2 8
		6' 0" of 9 x 1/2 "		5/7 1/2	.. 10 1/2
		1 sharpen saw			.. 6
	1	1 man 3 hrs. make frame			1 4 1/2
		20' 9" of 11 x 3/4 deal frame			4 4 1/2
		2' 0" of 2 1/2 x 2 1/2 "			.. 2 1/2
		1 lb. nails		6/4	.. 2
	6	1 load of sand & carting			2 0
	15	1 man 3 hrs. make frame			1 4 1/2
		20' 6" of 11 x 3/4 deal			4 4 1/2
		2' 0" of 3 x 2 "			2 1
		1 lb. nails		6/4	2
	16	1 man 4 1/2 hrs. plane raps			2 1 1/2
		10' 6" of 11 x 3/8 deal			1 9
		6' 9" of 9 x 1/2 "		5-7 1/2	.. 11 1/2
		forward		£	2 16 6 1/2

1912

£ s d

		forward		2	16	6½	
		6-0 of 2½x1 deal worked				4½	
		3-9 of 9x¾	5-10			8	
Apr.	22	1 man 9 hrs. color kitchen & whitewash scullery				4 10½	
	23	1 man 6½ hrs. do				3 6½	
	24	1 man 3½ hrs. do. & clear away				1 7½	
		14 lbs. Halls distemper, white & green				4 6	
		lime & plaster				6	
	25	1 man 3½ hrs. make frame	} X 6/4			1 7½	
		21-0 of 11x¾ deal					4 4½
		2-0 of 3x2 ..					2
		1 lb. nails					2
	25	1 man 4½ hrs. plane up raps	} 4/10			2 10½	
		7-3 of 11x¾ deal					1 2½
		3-0 of 11x½ ..					6
		6-0 of 2½x1 ..					4½
		3-9 of 9x¾ ..					8
May	8	1 hr. fetch table & cart				6	
	9	1 man 6½ hrs. make packing case	} 12/8			3 0½	
		160-0 of 2x1 batten					5 0
		9-0 of 7x¾ deal					9½
		6-0 of 9x¾ ..					10
		4 screws, 2 lbs nails					4½
		deliver to Woodbury Rd. Station				2 0	
	13	1 man 2 hrs. make plane raps	} 9/6			10	
	15	1 man 3½ hrs do.					1 7½
		12-0 of 9x1½ 4 raps					3 9
		12-0 of 13x¾ 6 raps					3 3
26		22. 12-0 of 4½x¾ match board				19 10	
June	16	2 men 2 hrs. ea. take off & re-erect chimney top	} 2/0			2 0	
		repair same					6
	29	25 bricks				1 1	
		Paid July 8. 1912		£	6	14 2	

The Woodbury School Managers

1912

£ s d

	To account rendered (316)	1	0	6
Feb. 24	1 man 5 hrs. repair play windows + playground door			2 3½
	1 pair hooks & turnbuckles 4½ lbs.			1 5
	1 hasp staple, 2. 1½ x ¼ bolts, & 14. 1½ screws			7
	board & paint			5½

 £ 1 5 3.

Paid Sep 23. 1912

Rev. R. H. Neely

£ s d

Mar. 19	Removing & putting back school			
† 20	seats & tables at school, put-up			
	Curtain in Church			3 0
May 9	Put-up & take down platform, remove			
† 10	seats, & Horse Cart fetch & return			
	trestles to The Parsonage			3 6

 £ 6 6

Paid Sep. 23. 1912

F. J. Tautz, Esq. Fairfield, Woodbury

1912

		p	d
Apr.	1	2 men 1 day ea. dig & drive out earth carting 17 loads earth	70
			5 ⁰⁰
	23	2 men 1 day ea. carting 14 loads earth	70
			510

£ 1 6 11

To digging and ear wheeling out and
carting 31 loads of earth to Fairfield
at 1/11

Paid July 12th - 1912

1 13 7

52

1 8 5

1912

Stamp Van Bros. Butchers T.

£ p d

Apr.	6	putting handles in two forks	. 10
	27	2 shoes on pony	1 0
	30	new handle to cleaver & repair end of cleaver	. .
			1 3
June	8	2 shives	1 2
	28	put castor on chair	. 4

£ 4 7

Paid July 23rd - 1912

Mr. T. Stocker, Raleigh Cottage, Withycombe Raleigh

1912

May	3	1 man 1 hr. weighing sashes		..	5½
	6	1 man 1 hr. repair barge boards		..	5½
	7	2 men 1 day ea. repair doors & jambs & windows		..	7 8
	8	2 men 1 day ea. repair yard doors, rehang orchard gate & repair bakery window		..	7 8
	9	1 man 1 day do. do.			3 10
		1 man 1½ hrs. repair window		..	8½
	10	2 men 1 day ea. hanging top sashes			7 8
	11	2 men 1 day ea. do.			7 8
		13-9 of 7x¾ deal repair capping	1		1 2
		7-0 of 9x¾ " on garden door	2		1 2
		8-0 of 7x¾ " on bakery back doors	1		.. 8
		2 lbs. nails, 8. 1½" screws		..	5½
		1-0 of 10x4 oak stop block yard doors			1 0
		1-0 of 3x1 deal "			1
		30-0 of ¾" beading on windows			1 1
		11 sash pulleys & 22 screws			2 9
		10. 9½ lbs. sash weights	8 ^p		6 8
		2 knots of sash cord & 3 doz. clouts			2 1
		3-3 of 4x3 oak pill Adams' door	3½		.. 11½
		3-0 of 4x3 deal jambs "			.. 10
		2-6 of 3½x1 " drip "			.. 2
		3-3 of 1¾x½ " stop "			.. 1
		1 latch & guide & 6 screws			.. 3½
		½ lb. nails			.. 1
		3-0 of 2½x1½ deal bakery window			..
		3-0 of 5x1½ " " "			.. 10
		6. 1" screws			.. 1
		2 panes glass 7½x9 ea. putty			.. 3
		3-0 of 1¾x¾ deal			.. 1
		2 panes of glass 14x10 ea. Adams window forward			.. 7
			£		2 17 6

1912

£ s d

		forward	2	17	6
		2 square staples & 1 hook for gate		7	
		2 squares for windows		4	
May	13	2 men 1 day ea. hang & repair sashes		7	8
	14	2 men 1 day, ea. do.		7	8
	15	1 man 1 day do.		3	10
		1 man 3 hrs. do.		1	4 ¹ / ₂
		12 sash pulleys & 24 screws	3	3	0
		2 ¹ / ₂ knob sash cord + 5 doz. clouds		3	2
		2 8lb. ¹ / ₂ 2 9 ¹ / ₂ lb. ¹ / ₄ 2 7 ¹ / ₂ lb. + 2 1 ¹ / ₂ lb. weights		4	7
		25.6 of ³ / ₈ beading for windows			11
		5.3 of ³ / ₄ "			2 ¹ / ₂
		3.0 of 1 ³ / ₄ x 1/2 deal			1
		3.0 of 4 x 1 "			4
		3.0 of 1 ¹ / ₄ x 2 "			1
		3.0 of 1 ⁵ / ₈ x 1 ¹ / ₂ "			1
		3.0 of 1 ⁵ / ₈ x 3/4 "			1
		1.0 of 4 x 3/4 "			1
		14. 1" screws			2
		36. 3/4 " for squares			6
		1 pane glass 11 x 14 putty			4
		3.0 of 4 x 2 deal under stairs			4
		4.6 of 4 x 3 oak post at wheatons	3 ¹ / ₂		14
		8 squares for windows			8
	31	1 man 4 hrs. take down & repair shuting		1	10
June	1	1 man 4 hrs. fix shuting		1	10
		2. 6.0 lengths of 3 ¹ / ₂ " shuting		3	0
		2 stop ends			6
		1 lb. putty			1 ¹ / ₂
		6 gutter bolts			1 ¹ / ₂
		3.0 of wire + piece of zinc			2
		repair 7 shute cramps ¹ / ₂ 1 new one			16
		forward	£	5	40

1912

£ s d

		£	s	d
	forward	5	4	0
June	3 1 man 1 day repair back window at Adams'		3	10
	4 1 man 1 day do. do.		3	10
	5 1 man 2 hrs. fix window do.			11
	To casing over two bedroom floors at Adams' with $\frac{3}{4}$ " floor board at £1.6.0 ea.	2	12	0
	7 1 man 5 hrs. case over landing		2	3 $\frac{1}{2}$
	64.0 of $7 \times \frac{3}{4}$ floor $\frac{3}{8}$ of square		4	6
	1 lb. nails			2 $\frac{1}{2}$
	3.6 of 6×2 deal sill Adams window			10
	3.9 of $4 \times 1\frac{1}{4}$ " frame			5 $\frac{1}{2}$
	2.6 of $9 \times 1\frac{3}{8}$ " casement			9 $\frac{1}{2}$
	nails 1" & 1" screws			2 $\frac{1}{2}$
	9.0 of $\frac{3}{4}$ " beading			5
10	1 man 8 hrs. take off & put on pump house roof		3	8
11	1 man 1 day put on roof & gutters		3	10
12	1 man $\frac{7}{8}$ hrs. do. & repair window over roof			3.5 $\frac{1}{2}$
	15.0 of 7×1 deal for gutter	$\frac{1}{4}$	1	7
	5.0 of 9" feather edge over W.C. door			5
	3.6 of $9 \times \frac{3}{4}$ deal	2		7
	6 lbs. nails			1 0
	6.0 of springing			6
	22.0 of 4×3 purlin head	2 $\frac{1}{2}$	4	7
	11.0 of $4\frac{1}{2} \times 3$ plate	3	2	9
	90.0 of 3×2 rafters		7	6
	92.0 of 2×1 batten		2	10
	3.6 of $7 \times \frac{3}{4}$ deal for window	1		3 $\frac{1}{2}$
	To painting R. as per contract of April 26. 1912		8	10 0
		£	18	17 3 $\frac{1}{2}$

Paid July 16th 1912

Mr. John B. Ashford

1912

£ s d

to ap. rendered (422)

39

May 10 1 man 6½ hrs putting up rails r. Thom Meadow

30

1 lab. 5½ hrs. do.

18½

11 1 man 6 hrs. do.

29

33-0 of 3x2 deal rails

29

14-0 of 4x2 ..

15½

1 lb. nails

2

½ gallon tar

3

£

15 10.

Paid Dec. 14th 1912

1912

Miss Frost

£ s d

June 22 1 man 7½ hrs. removing furniture

35½

1 do. 5 hrs. do.

24

Horse Waggon do. 1 day

60

24 1 man 7½ hrs. take down & re-fix blinds
poles r.

35½

£

15 3

Paid July 9. 1912

1912

Mr. W. Troake. Woodbury

£ s d

Jan. 23 put new bond on cart stock

13

Paid July 22nd 1912

Mr. Edgar Ware

1912

£ s d

May	11	1 man 1 hr. repair gates	
	13	1 man 6 hrs. do		3	2½
	14	1 man 1 day hang do. & repair linch		3	10
	15	1 man 7 hrs. do.		3	2½
	16	1 man 1 day do.		3	10
		8-9 of 4x2 deal	1¼	..	11
		9-0 of 3x2 "		..	9
		3-6 of 6x1½ elm		..	7
		3-3 of 12x1 "		..	8½
		10-6 of 2x1 deal		..	3½
		3-0 of 6x1½ "		..	6
		11 lbs. nails			1 10
		1. 3x3/8 bolt		..	1
		2 hasps. 7 staples, 1 eye & 2 hooks			2 3
			1/2	1	2 0

Paid, October 31. 1912

W. H. Mc. Millan, Esq.

1912

£ o d

June 17	1 man 6 hrs. preparing for gates		2 9
18	2 men 1 day ea. repair gates		8 0
19	2 men 1 day ea		8 0
20	2 men 1 day ea.		8 0
21	2 men 1 day ea.		8 0
22	2 men 1 day ea.		8 0
	58.6 of 7x1 deal for 12 bars	$\frac{13}{4}$	8 6 $\frac{1}{2}$
	17.0 of 4 $\frac{1}{2}$ x3 .. 4 tails	4	5 8
	17.0 of 7x2 $\frac{1}{2}$.. 4 top bars	
	8.6 of 7x2 $\frac{1}{2}$.. 4 heads	4	8 6
	19.0 of 7x1 deal 4 bars	$\frac{19}{4}$	2 9 $\frac{1}{2}$
	1. 4 x $\frac{1}{2}$ bolts.		.. 2
	18. C.S. nails		.. 4
	8 lbs. nails		1 4
	17 hooks + eyes, 6 sheeps r 12 staples,	
	+ 7 staples		10 0
	repairing 2 hooks + eyes + 5 staples		.. 6
		$\frac{7}{4}$	4 0 7.

Paid January 6. 1913

Miss Martin

1911			£	s	d
Dec	12	2 hrs. put in pane glass			11
		glass 12x7 putty			4
Jan.	19	new bottom to coal scuttle			16
	30	fit ringer to tub			19
Feb.	12	1 man 2 hrs. about shutting			11
	14	1 man 2 1/2 hrs. pie do.			12
	16	1 man 6 1/2 hrs. do.			30
	17	1 man 7 hrs. repair, slates. tubs etc			32 1/2
		1. 4 1/2" O.C. outlet 1/5 1 stop end 4 1/2"			19 1/2
		2. 6 ft. 2 1/2" Red Pipe			40
		1. 2 ft. do.			14
		1 sub. neck			17
		2 gutter bolts, 2 screws, 6 pipe nails			6
		1 lb. red lead, 12. 1" clout			5
		2 lbs. paint			10
		1 bucket mortar			4
		1 band for plute			4
Apr.	10	1 man 4 hrs. make stool			110
		23' 0" of 7 x 3/4 deal			20
		nails			2
	15	repair lawn mower			10
May	9	15. 6' 0" lengths of corrug. iron	2/6	1	176
	31	1 new body of wheelbarrow, ring wheel & put on new tyre			190
June	18	2 men 7 hrs. ea. paint skylights			65
	19	2 men 5 hrs. ea. do.			48
		1 pane 10 1/2 x 6			
		1 " 10 1/2 x 8 1/2			8
		1 " 13 1/2 x 10			
		1 lb. putty			25
		2 lbs. paint			10

£

4 18 5

Paid, Nov. 16. 1912

Woodbury Outdoor Rifle Club

1912

		£	s	d
Apr. 29	6" 0 of 4x2 rafter		..	8
	2 stakes		..	3
	1 larch pole		..	6
	1 rope catch screws		..	3
May 13	Horse cart $\frac{1}{2}$ day carting turf			30
		£	..	48

Paid Oct. 5. 1912

Woodbury Indoor Rifle Club

Jan. 18	new rail to target frame & pricing		..	7
Feb. 3	2 hrs. make pic shutter put stay on cupboard	
	11" 0 of 7x1 floor	3/7	}	11
	12. 1" screws, 2 hooks + eyes			15
	1 galv. stay on cupboard			10
				5
		£		42

Paid Oct. 5. 1912

Mr. T. Perry. Baker rs.

		£	s	d
Aug. 15	To new pigs trough			59

Paid October 29. 1912

The Vicar & Churchwardens of Stoke Canon

1912				
Jan ^{ry}	24	To mans time and railway fares		
&	25 th	overhauling the 6 bells and framework in Stoke Canon Church Tower.		14 6

0 d
 fares - 3-2
 2 hrs at 5^s - 14-0
 oil 4
 17-6

Paid November 16. 1912

Messrs J. Easton & Son Augth 12th 1912
 Steam Polishing Works
 Exeter

1912			£	s	d
July	5	Carting Headstone (w th holes) from Exeter to Woodbury Churchyard -			3 0

Paid August 12th 1912

Rev. K. A. Lake, Stoke-in Teign-head

1912

£ s d

July

To taking down the five bells from the tower, recasting the tenor bell, taking out the old fittings, frame, floor and beams; providing and fixing four beams, a deal floor, and providing, making and fixing an English oak frame for six bells and hanging five bells with all new fittings complete as per estimate of Jan. 27. 1912

145 0 0

To providing a new sixth bell and with all hanging it with all new fittings as per estimate of Jan. 27. 1912

45 18 0

To tuning the old bells in the tower

4 0 0

To providing fixing iron stair guides for the bell ropes

2 10 0

To fixing clock hammer to tenor bell

4 0

 £ 197 12 0

Aug. 8 Received on ac. as per receipt given

£ 84 9 0

 £ 113 3 0

Settled August 26th 1912

Mrs. T. Stokes.

1911

£ s d

Dec. 23	1 man 2 hrs. make window frame at J. Sellicks		9½
28	1 man 7½ hrs. do. do.		30
29	1 man 1 day fix frame & gate post		38
30	1 man 1 day repair hanging gate		38
	10' 0" of 4x3 deal frame	3¼	28½
	3' 9" of 7x3 "	5½	19
	6' 3" of 4x2½ "	2¾	15
	8' 6" of perforated zinc "	4	210
	½ lb. paint		9
	3' 3" of 3x2 deal for gate		3½
	6' 3" of 4½x3½ oak post	4¾	25½
	4 2" screws, 1 lb. nails, clouts		5
	2 bricks, ½ bucket mortar		5
		£	142

Paid September 2nd 1912

Mrs. Hillman, 15. Edith Avenue, Lipson, Plymouth

1912			£	s	d
Sep.	17	To meeting Corpse at Exeter, arranging	"	"	"
+	18	for, and attending the funeral of	"	"	"
		the late Mrs. Livermore	1	5	0
		Hearse	1	10	0
		6 Bearers		15	0
		Vicar's Fees		10	0
		Clerk's Fees		2	6
		§ecton's Fees		9	0
		Fees for breaking ground	2	2	0
			£	6	13
					6


Paid September 25th 1912

Mrs. Williams, Postlake, Woodbury £ . .

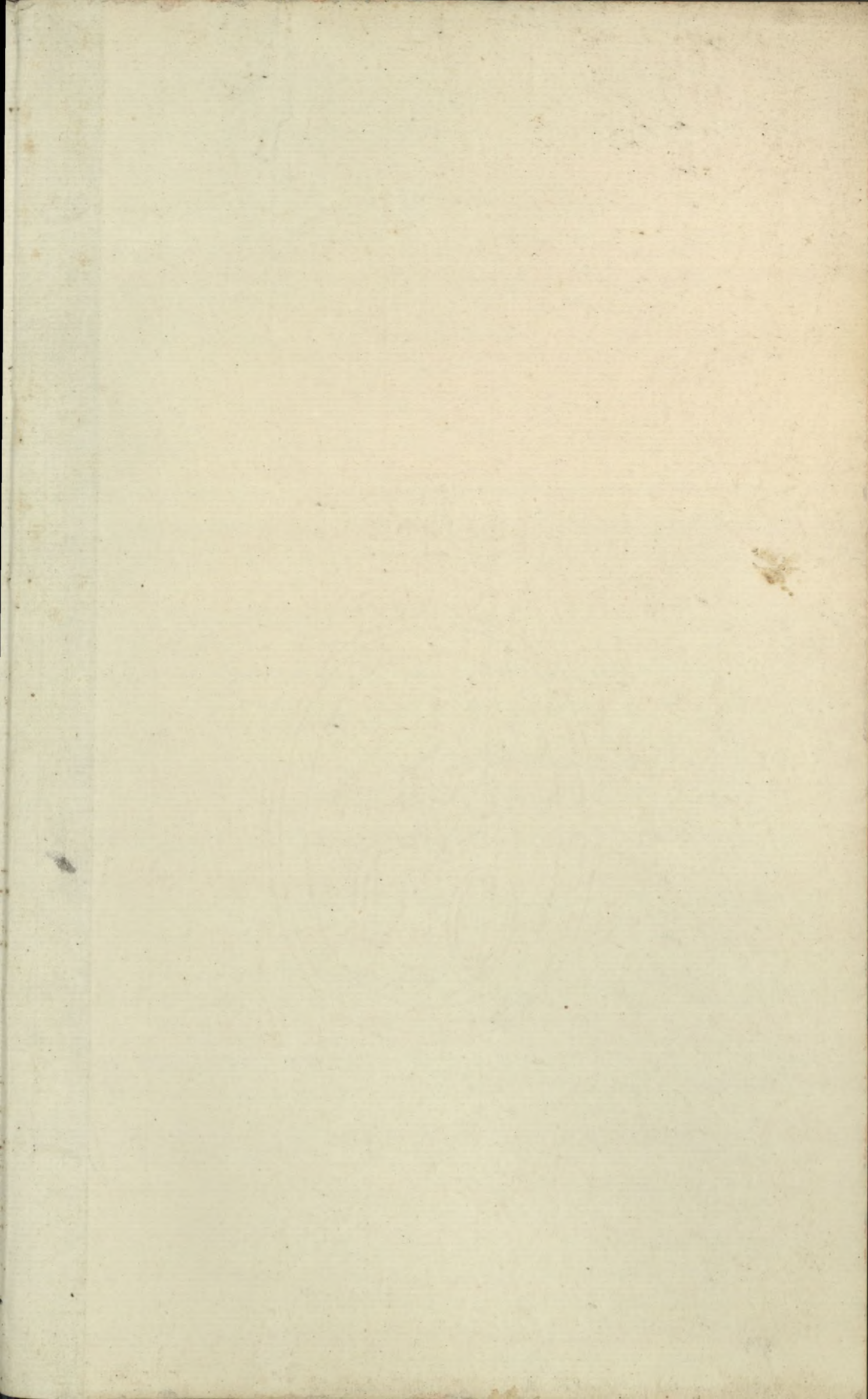
1912

Sept 24	To making a polished elm Coffin	-
+ 28	for the late Mr. W. Williams and carrying out the Funeral at Woodbury, Salterton	-	-	-
	To Vicar's, Clerks, Sexton's Fees			80
	To Hearse			190
				<u>£ 500</u>

Paid. October 12th 1912

1-	4.0 -	$5\frac{1}{2} \times 3$	
1-	22.0 -	$5\frac{1}{2} \times 3$	
1-	22.0 -	3×3	all
1-	22.0 -	$4\frac{1}{2} \times 3$	buildings
2-	74.0 -	$7\frac{1}{2} \times 3$	
2-	10.0 -	4×2	Red
1-	4.0 -	11×3	
6-	14.0 -	$3\frac{1}{2} \times 2$	
18-	12.0 -	$3\frac{1}{2} \times 2$	
1-	7.0 -	11×2	
2-	42.0 } -	$4 \times 2\frac{1}{4}$	
44.0	of springs		
<u>200 feet. 2x1</u>			

22
9
31



Jan. 19.	new bottom to coal scuttle	1/6
Feb. 16.	1 band for plute	4
Apr. 15	repair lawn mower	1/-
May 15	2 wheel eyes	1/-
	8 rivets & repair ironwork	9
28	put on tyre	6
15.	1 day	3-10
16	1 day	3-10
17	7 hrs.	3-2 1/2
18	3 hrs.	1-4 1/2
	3 hrs. ring wheel	1-4 1/2
28	1 day do. paint	3-10
30	1/2 hr.	3

19-11 1/2

3-6	5-3-0	219
3-6	1-6-0	
2-7 1/2	6-9-9	
1-1 1/2		
1-1 1/2		
3-6		
2 1/2		
15-7	0	
	2-1 1/2	
		14
		14) 1-9-9 (
		20
		29 (2
		28
		1
		21 (1-

