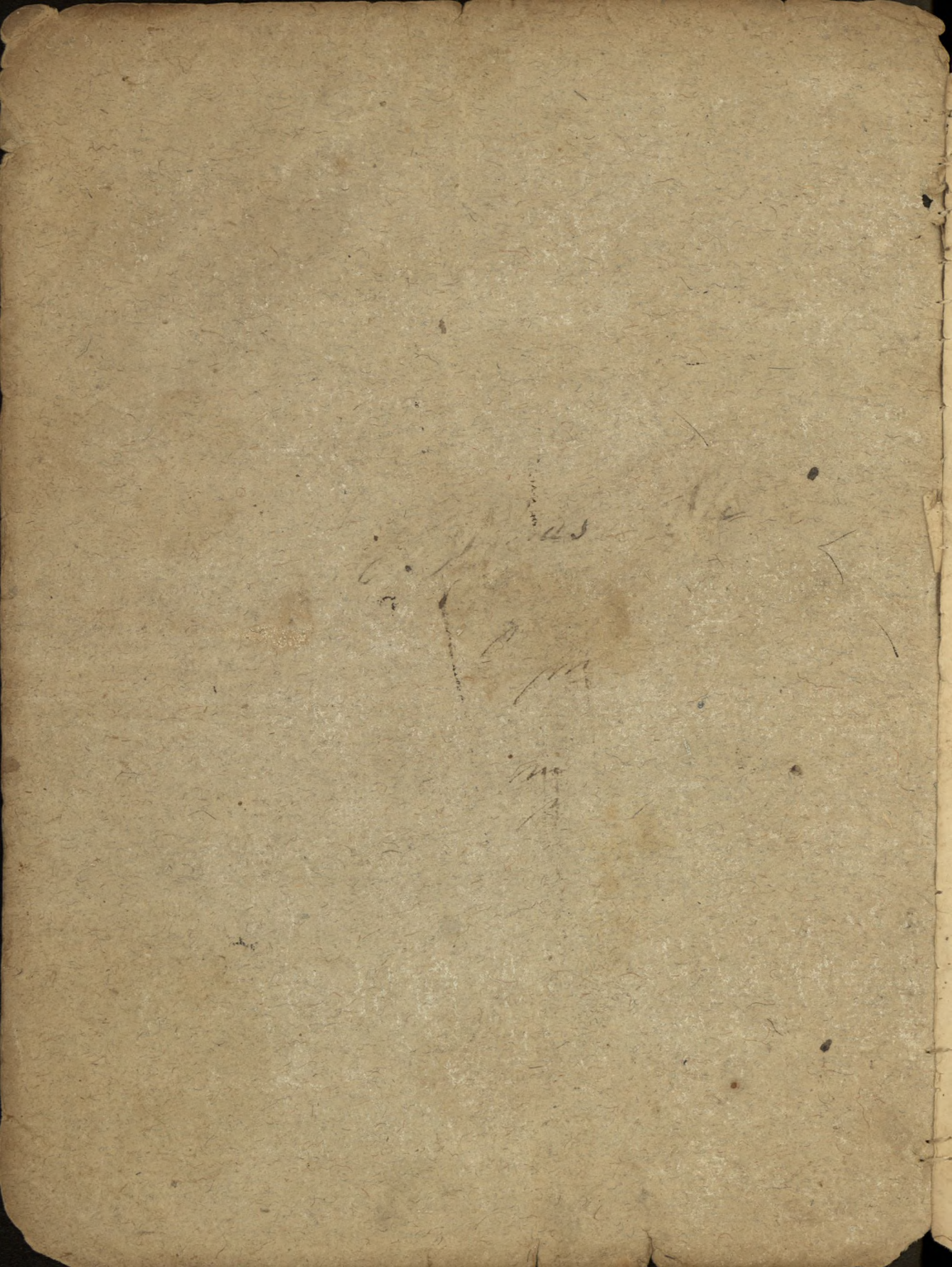


A true Copy of the regulating Rate  
in Woodbury Church Ledger made  
in 1631.

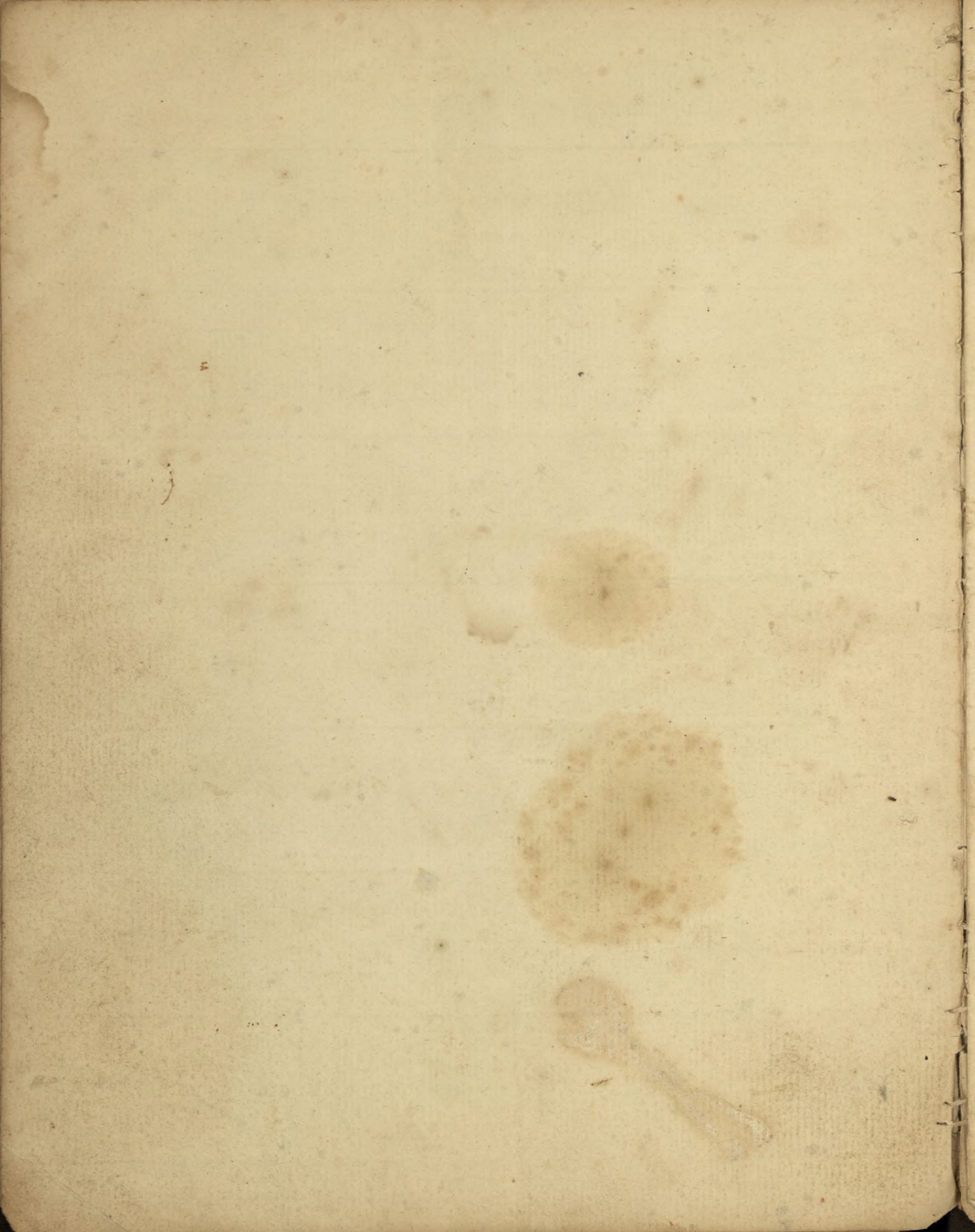
A true Copy of the Regulating Rate  
in Woodbury Church Ledger made  
in 1631.



1631  
199  

---

1823



In the first Rate in Woodbury Church Ledger, made 27.<sup>th</sup> Year of King Henry 8.<sup>th</sup>, 1536, which is the doest Parish Transaction now extant, John Lee Lived at Sparkhays, & voluntarily subscribed 2 Bushels of Malt yearly to the Alehouse; the Profits whereof were appropriated to the Repairs of the Church, under the care of 2 Ale Wardens, besides the 2 Church Wardens; from whence the Ledger had first the name of Malt Book.

The Subscribers Taxed the other Estates in the Parish, as well as their own, in proportion to their Value, by which it appears that the above John Lee must have been in possession of other Estates besides Sparkhays, as none are charged more than 2 Bushels, except the Owners of Cliford Barton, Groynd, Houndbear, & Coombe; & but few so much as 2 Bushels, being chiefly from one Bushel to 2 Quarts.

The Register begins in 1557, in the Reign of Philip & Mary, before which time there were no Registers in the Kingdom; but the Family appears by the above to have been settled at Sparkhays long before.

In 1591, the 33.<sup>th</sup> year of Queen Elizabeth, 16 Persons were chosen by the Parishioners, to make a new Rate of all the Lands in the Parish. Part of the Rate is missing, but the Amount of the whole was 137 Bushels & three Quarters of a Peck of Malt or in Money at the rate of sixteen Pence per Bushel, £9.<sup>..</sup>2.<sup>..</sup>11.

But the above Rate being found insufficient, in 1631, the 7.<sup>th</sup> Year of King Charles the 1.<sup>st</sup>, another was made by the Churchwardens, Sidemen & Parishioners; by which all after some have been ever since regulated; the Amount whereof is £12.<sup>..</sup>5.

In the first part of the History Church Papers, on page 27, it is  
stated that in 1536, which is the year of the Reformation, the  
Parish of St. Mary's was divided into two parts, the one being  
appropriated to the Bishop of the Church, under the name of  
St. Mary's, and the other Church of St. Mary's, from whence the  
parish of St. Mary's is derived.

The subsequent history of the Church of St. Mary's is  
as well as their own, in proportion to their value, by which it  
appears that the above-mentioned church has been in possession  
of other Parishes besides St. Mary's, as more are changed  
than St. Mary's, except the Parishes of St. Peter and St. Paul,  
St. Andrew, St. George, & St. James, as much as St. Mary's,  
chiefly from the above-mentioned Parishes.

The Register begins in 1537, in the reign of Henry  
the 8th, before which time there were no Registers in the  
parish of St. Mary's, as the above-mentioned have been  
the Parishes of St. Peter and St. Paul.

In 1537, the 8th year of Henry the 8th, the Parishes of  
St. Peter and St. Paul, to make a new Parishes of all the  
in the Parishes. Part of the Parishes is giving, but the  
of the Parishes, the Parishes of St. Peter and St. Paul,  
or in the year of the death of Henry the 8th, the Parishes  
of St. Peter and St. Paul, being found insufficient in 1537,  
the year of Henry the 8th, another was made by the  
Parishes of St. Peter and St. Paul, by which all the  
Parishes were regulated, the Parishes of St. Peter and St. Paul.

W. B. Smith

East Street, N. York

For Mr. Joseph Lee  
in Woodbury



Woodbury 1631. Whereas the ancient Rate for the Repairing the Church of the said Parish is now too little & not sufficient to satisfy such yearly Charges & Payments as heretofore hath been accustomed, & now hereafter ought to be laid out & paid towards the said Church. Therefore it was ordered at the Visitation Court holden in the Parish Church aforesaid the 23<sup>th</sup> day of May in the year of our Lord 1631 by the Official & Register for the time being, that there should be a new Rate or Tax made for the purpose aforesaid by the then Church Wardens & Sidemen, with others of <sup>the</sup> said Parish. Whereupon the said Parishioners as well by the consent of the right wors. Sir Thomas Predyaux Knight, as also by the assent of divers others of the said Parish whose names are hereafter to this Rate subscribed, have now made & agreed upon this new Rate & Tax upon all the Lands within the said Parish towards the Reparation of the said Church & Charges aforesaid yearly from henceforth to be paid from the Feast of Easter last past these several Sums of Money & of these several Persons whose names are hereafter in this present Rate expressed, viz:

Nuttwell

Sir Tho: Predyaux Kn. for his ancient Barten of Nuttwell; for that was Holl's Ground; for Withisaires; for Bayshales; for 13 Acres that was Stook's Ground; for Rydon Meadow; & for Broad Meadow; in all	} 16 <sup>s</sup> 8
Robt. Lovering Sen. for the Tenement he Lives in	11
for one Close called the Horse Park	3
2 Closes at Sowell	4
2 Cottages & a Meadow at Gulliford	6
Mary Scott Wid: for the Tenement she Lives in	3 <sup>s</sup> 1
for Bettyes Coate in Woodbury Town	7
William Lovering for his Tenement	1 <sup>s</sup> 2

Rob <sup>t</sup> Addams	2 <sup>n</sup> 9
Joan Weekes Wid:	1 <sup>n</sup> 2
Joan Addams Wid:	1 <sup>n</sup> 2
Roger Nichols for his Tenement	7
for Pollard's Brooke in Woodbury Town <sup>aclose</sup>	2
Rob <sup>t</sup> Moore	2 <sup>n</sup> —
Barth <sup>o</sup> Webb	2
William Headman	6

---

 Exton
 

---

John Pearse for a Cottage at Exton Hill	1
Anthony Pearse	2
W <sup>m</sup> Cooke for his Cottage & his Land	7
John Roades	5
Oliver Wittchalse	1
Peter Knott	6
W <sup>m</sup> Turryn or Occupiers of that Tenement	7
Arthur Spurr Gent: for the Tenement he lives in	2 <sup>n</sup> 6
for M <sup>r</sup> Gove's Tenement	1 <sup>n</sup> 4
Joan Young Wid: for her Tenement & Water Mill	2 <sup>n</sup> 4
Ambrose Show for one Close called Long Park	2
Peter Trapnell for his 2 Tenements	1 <sup>n</sup> 9
W <sup>m</sup> Webber for a Cottage at Marsh	4
Alex <sup>t</sup> Duke Gent: for Exton Farm	3 <sup>n</sup> 4
for Sowell Ground	1 <sup>n</sup> 6
for Ellyott's Tenement in Woodbury Town	1 <sup>n</sup> 3
for Bussell's Tenement	5
for M <sup>r</sup> Tho <sup>s</sup> Duke's Tenement	9
John Seate for the Tenement he lives in	1 <sup>n</sup> 6
for his Tenement called Gilbroke	1 <sup>n</sup> —
Tristram Pearse for a Close called Stookebridge	2
Joseph Morrish	6

---

## Ebbford

	Sh. <sup>s</sup>	Pence
Gideon Haydon Esq <sup>r</sup> for Ebbford Barton - - -	4	2
for Houndbear Farm - - -	8	4
Christ <sup>r</sup> Wall - - -	—	10
W <sup>m</sup> Whetcombe for the Tenement he lives in - - -	2	6
for his Tenement at Exton - - -	1	5
John Gibb - - -	1	6
Marg <sup>r</sup> Dally Wid: - - -	—	9
Rich <sup>d</sup> Bryant for the Tenement he lives in - - -	1	8
for German's Tenement - - -	—	7
W <sup>m</sup> Pearse for the Tenement he lives in - - -	1	6
for his Tenement in Woodbury Town - - -	—	10
John Beadon - - -	—	2
W <sup>m</sup> Hurford - - -	—	5
John Embury - - -	—	2
John Taylor - - -	—	1
Rabbish Pearse Wid: - - -	—	1
Tho <sup>s</sup> Crutchard - - -	—	2
George Peeke - - -	—	2
Rich <sup>d</sup> Salter - - -	—	9

## Ridon

Jane Holwill Wid: for the Tenement she lives in - - -	1	9
for Broad Ridons - - -	—	3
Rob <sup>t</sup> Stogdon for Motchills - - -	—	3
for 2 closes of Thomas his Tenement } - - -	—	3
& the little Meadow by the Mill - - - } - - -	—	3
for 2 Cottages in Woodbury Town - - -	—	6
Cath: Colsworthy for Sabby's Marsh - - -	—	4
Geo: Colsworthy - - -	—	6
Christ: Hill Wid: - - -	1	2
John Hill the younger - - -	—	6

## Little Fenmoor

Sh.<sup>s</sup>, Pence

Rob <sup>t</sup> . Caddewe	2	11
Anth: Pynse	—	6
Tristram Thomas	—	9
James Vincent	—	6
<hr/> Great Fenmoor <hr/>		
John Plympton	1	6
John Spracett Gent:	1	8
for Payge's Meadow	+	10
W <sup>m</sup> . Smyth	1	5
<hr/> Scutts moor <hr/>		
Rebecca Hill Wid:	1	5
for Hamm's Close	—	4
<hr/> Gullyford <hr/>		
Tho <sup>s</sup> . Cooke	2	4
Philip Pynse	—	11
W <sup>m</sup> . Way	—	10
for his Cottage in Town	—	2
W <sup>m</sup> . Salter	—	2
Cha <sup>s</sup> . Stookes	1	7
Rob <sup>t</sup> . Lovering the younger	—	9
Nich <sup>s</sup> . Warren	—	4
Joan Hayman Wid:	—	5
Rob <sup>t</sup> . Halfyard	—	6
for that in Exton	—	6
Rich <sup>d</sup> . Smyth	—	3
Tho <sup>s</sup> . Manninge	—	5
John Hillman	—	9

Amy's Pedyaux Gent.	3	4
W <sup>m</sup> Collings	1	8
Tho <sup>s</sup> Densham	1	8
W <sup>m</sup> Cooke for his Tenement	—	6
for Pearse's Ground	—	4
for the Mill at Ridon	1	3
Christ <sup>r</sup> Ellett	—	2

Woodmanton

x M <sup>rs</sup> Joan Harrington for the Tenement she lives in.	3	2
for Heath's Tenement	—	10
John Heath the elder	—	10
John Heath the younger for Ham's Ground	—	5
Rob <sup>t</sup> Symons for his Tenement	1	5
for Tuckers Wood	—	5
x Amy's Rockett	—	8
x John Perryam	—	10
Joan Starr Wid:	—	1

Sparkeshaies

Thomas Lee for his Tenement	1	5
for his Tenement in Gulliford	—	8
Rich <sup>d</sup> Mallacke	3	2
W <sup>m</sup> Taylor	—	5
Vincent Hellman	1	3

Bridgepitt

Rich <sup>d</sup> Hill	1	1
The Wester part of Woodbury Town	—	—
Rich <sup>d</sup> Parrett for his Tenement there	—	7
for his Tenement in Salterton	—	9
W <sup>m</sup> Mable	—	1
Rich <sup>d</sup> Mable the elder	—	4
Joan Ballamant Wid:	—	3
James Payge	—	6
W <sup>m</sup> Smeath	—	2
Tho <sup>s</sup> Addams	—	11

The Easter part of Woodbury Town. Sh<sup>s</sup>, Pence

M <sup>rs</sup> Joan Gove Wid:	1 " 6
Edw <sup>d</sup> Bampfylde Esq <sup>r</sup> for Woodbury Wood	1 " 2
Christ <sup>r</sup> Presford for Rushmoor	— 6
Christ <sup>r</sup> Labbett	— 2
Nich <sup>s</sup> Scott	— 2
Christ <sup>r</sup> Brockwell	— 2
Rich <sup>d</sup> Corney	— 2
And <sup>w</sup> Leonard for his House	— 2
for Barten Land	— 7
W <sup>m</sup> Joper	— 2
Rich <sup>d</sup> Mable the younger	1 " 6
Joan Symons Wid:	— 1
W <sup>m</sup> Radford	— 2
John Hollwill for his Tenement	2 " 6
for a Cottage	— 3
for Wiccomb Meadow	— 11
for Flemon's Grounds	1 " 1
for Bagmoors	1 " 8
Rich <sup>d</sup> Payne for his Cottage	— 2
for Porlake Grounds	— 3
Rob <sup>t</sup> Brockwell	— 2
John Cheares	— 3
Edw <sup>d</sup> Holwill for the Tenement he lives in, & } 2 " 10	
for 2 Acres of Scotts Land } 8	
for Myll leates	— 8
for the Tenement in Winsore Green.	1 " 3
for the Well Parkes	— 8
for Lamb Parkes	— 6
for the Blacklands & Hopping's Hills.	— 7
Oliver Hopping	— 10
Tho <sup>s</sup> Auxce	— 7
Christ <sup>r</sup> Westcott for his Cottage	— 3
for the Wood Parks & the Brewhouse	— 6
Gilb <sup>t</sup> Drake Gent:	3 " 4

7. The Easter part of Woodbury Town Sh<sup>s</sup>, Pence.

Thomas Webber	1	4
Humphry Smyth	1	4
John Clarke		2
John Crutchard		1
George Northleigh		6
Henry Hann for Heathfield & Combs		9
Joan Baker Wid:		3
Henry Hopping for Kitelands		2
Wm Scott for his Tenement		3
John Sparc		3
Wm German		1
Wm Lux		8
Alice Ford Wid:		7
Rich: Pigeon for his Cottage, & Silcomb Meadow		3
Alice Beale Wid:	1	10
<hr/> Porslake <hr/>		
John Trosse for Porslake Tenement	3	"
for his Tenement at Salterton	1	" 9
Rich: Johans & his Mother	1	" 11
<hr/> Pylehaies <hr/>		
John Hill	1	" 9
Edw: Glasse for his Tenement there	1	" 5
for his Tenement in Ebbford		9
<hr/> Heathfield <hr/>		
Peter Lutton for his Tenement	1	" 3
for the grounds of Johans		5
Rich: Hill for his Tenement	1	" 3
for that was Johans' Ground		7
for Coad's Ground		7
Susanna Briddecombe Wid:	1	" 3
John Turner	1	" 3
George Gibb		3

Abm Parkyn	1 " 7
Marks Parkyn	— 4
John Bidgood for the Tenement he lives in	— 10
for Heale	1 " 3
for ten Acres of Hoppyngs & Woods	— 5
for the Tenement in right of his Wife	1 " —
John Hoppinge	— 3
John Winter	— 3
Wm Pearse in the right of his Wife	1 " 7
Wm Downham for Thatches	— 4
for Lamb Parks	— 5
Ans: Howe	— 10
John Potbury	— 9
John Wood	— 2
Nath: Salter for Hocklake	— 2
Gilb: Thatcher	— 7
Greg: Prydham	— 4
Nath: Wood for his Tenement	— 8
for that was Bragg's	— 2
Rich: Dagworthy	— 9
Edm: Trumpe	— 2
Tho: Hopping for his Tenement	— 7
for that was Nychols	— 7
for the Hills	— 10
Richard Earle Wid: for her Tenement	— 10
for Culverley	— 3
Agnes Benyson Wid:	— 1
Edw: Halse	— 1
Rich: Wood	— 1
John Terry Gent: for Bridge	4 " 7
Peter Scott	— 1
Michael Seycock	— 2
Carpenter	— 1
John Wood the younger	— 2



Salterton .

Sh<sup>s</sup> Pence

Edm <sup>d</sup> Gallopp	—	10
Rich <sup>d</sup> Halse	1	2
W <sup>m</sup> Veale	—	10
Ellinor Bond Wid:	—	10
Tho <sup>s</sup> Hall	1	8
Rob <sup>t</sup> Hall	—	11
Ellinor Truscott Wid:	—	9
Rich <sup>d</sup> Melhuish	1	2
George Wood	—	2
Clement Watts	—	1
John Edwards	—	6
Edw <sup>d</sup> Eveligh	—	3
W <sup>m</sup> Coole	—	1
John Maunder	—	1

Gryndle

Walter Younge Esq <sup>r</sup>	9	2
Tho <sup>s</sup> Prydham	1	5
John Westcott	2	—
Rich <sup>d</sup> Watts	—	4
John Stowforde	—	4
W <sup>m</sup> Ellis	—	7
George Busell	—	2

Wotton

John Pynn	—	10
Christ <sup>r</sup> Moore	—	4
And <sup>w</sup> Hall	—	3
Thomsin Cooke Wid: for her Tenement	—	10
for Herne's Land	—	1
for the Souther Grounds	—	5
John Lee for Wotton Meadow	—	9
Francis Germyn	—	10
Rob <sup>t</sup> Symons	—	4

Rob <sup>t</sup> Scott	-----	1 " 5
Tho <sup>s</sup> Bussell	-----	----- 2
Nicholas Halse	-----	----- 10
<hr/>		
Hogsbrook		
Tho <sup>s</sup> Scott	-----	1 " 7
Rob <sup>t</sup> Perry	-----	1 " 4
John Scottche	-----	1 " 5
<hr/>		
Houndbear		
John Hill	-----	2 " 4
Total Sum		<u>£ 12, 5, 7.</u>

This Rate being finished, & Published in the Pish Church  
 aforesaid, was in the Month of July in the aforesaid  
 year of our Lord God 1631 put in & fixed to this Book,  
 (the Malt Book or Ledger) & so confirmed by the hands  
 of those Persons whose Names are hereafter following  
 set down, viz:

- |                                   |                             |
|-----------------------------------|-----------------------------|
| Tho <sup>s</sup> Prydeaux,        | Ar: Spurr,                  |
| Tho <sup>s</sup> Alwill Minister, | Rob <sup>t</sup> Caddewe,   |
| Henry Henston,                    | } Church Wardens,           |
| Edw <sup>d</sup> . Dally,         |                             |
| Willia Waye,                      | John Perye,                 |
| Edw <sup>d</sup> . Hollwill,      | Rob <sup>t</sup> . Adams,   |
| Rob <sup>t</sup> . Halfyard,      | W <sup>m</sup> . Whetcomb,  |
| Rich <sup>d</sup> . Halse,        | Rich <sup>d</sup> . Bryant, |
| Tho <sup>s</sup> . Lee,           | Rob <sup>t</sup> . Scott,   |
| Tho <sup>s</sup> . Cooke,         | Rob <sup>t</sup> . Symens,  |
| Cha <sup>s</sup> . Stokes,        | John Hollwill,              |
| Tho <sup>s</sup> . Webber.        | W <sup>m</sup> . Pears.     |

The above is an exact Copy of the original Rate in Woodbury  
 Church ledger, made in 1631, by which all Assessments have been  
 ever since regulated.      Ebford 14 June 1770.      Matt<sup>w</sup>. Lee

Matthew Lee

1816  
1631  

---

185

1

Matthew Lee

