



LEGGING BUCKLE?  
BROAD MILL DOWN  
1366 1785C 31-3-05

RECTANGULAR BUCKLE HARNESS?  
HICHER DROAD MOOR  
907. B. CB.  
1937.98658771.22-1-06

'D-RING' MODERN?  
FOUR ACRES  
1308. B. ET.  
2068.00618709.19-9-06

SINGLE LOOP SUB-RECTANGULAR BUCKLE.  
C 1300-1500.  
WITH ROLLER & PIN  
PARSONAGE PARK  
992. A. RB.  
2140.01698754.28-3-07

SINGLE LOOP D-SHAPE BUCKLE  
PIN MISSING.  
C 1250-1500  
PARSONAGE PARK  
992. B. RB.  
2144.01698754.30-3-07

SINGLE LOOP BUCKLE  
1350-1450  
P C  
APPLEDORE HILL  
816. B. JP.  
2312.99658790.31-8-08

Double loop buckles



SPECTACLE BUCKLE  
1500-1650  
LOWER LAMB PARK  
1107 B RB  
1538 01098764 13-3-04

DOUBLE LOOP OVAL BUCKLE & PIN  
C 1450-1600. P  
ROPEWORK DECORATION  
FIR FIELD  
781 809B 21-9-98

COPPER-ALLOY 'SPECTACLE' BUCKLE.  
C 1350-1650.  
25x24 mm. BROKEN WHEN FOUND.  
WILL PARK  
775 929D 16-9-98

COPPER-ALLOY 'SPECTACLE' BUCKLE  
1500-1650  
SEVEN ACRES  
1147 1102B 10-4-00

DOUBLE LOOP OVAL BUCKLE.  
C 1550-1650.  
TUDOR/STUART.  
HILL CLOSE  
884 1307H 5-1-99



DOUBLE LOOP OVAL BUCKLE.  
1550-1650. PIN P  
MISSING. TUDOR/STUART  
WINDMILL HILL  
893 800Q 24-1-99

DOUBLE LOOP TRAPEZOIDAL BUCKLE. C 1620-1680  
STUART. EVIDENCE OF TANNING.  
SALT PIT FIELD  
454 617A 8-8-97

DOUBLE LOOP SUB-OVAL BUCKLE  
C 1600-1720  
STUART/GEORGIAN  
GILLBROOK ORCHARD  
1209 1468B 25-6-00

DOUBLE LOOP SUB-OVAL BUCKLE  
C 1600-1720  
PIN MISSING. STUART/GEORGIAN  
HICHER DROAD MOOR  
406 1000B 17-6-97



STUART GIRDLE BUCKLE 1600-1700  
ORIGINALLY TINNED.  
FOUR ACRES  
33 A 23-7-96

BUCKLE 1600-1700  
GILLBROOK ORCHARD  
1346 1463A 27-7-02

ORNAMENTAL SPECTACLE BUCKLE  
1550-1650  
NEWTON'S FIELD  
1378 730B 18-5-03

COPPER-ALLOY GIRDLE BUCKLE.  
1600-1700  
MEAD  
980 564B 6-6-99



SPECTACLE BUCKLE  
1350-1650.  
P  
LOWER FITCHERS  
809. C. RB.  
2263.00498889.11-2-08

DOUBLE-LOOP, SUB-OVAL BUCKLE.  
1600-1720.  
PARSONAGE PARK  
992. D. RB.  
2083.01698754.28-3-06

CATER OR CHILD'S SHOE BUCKLE.  
MODERN.  
BARN MEADOW  
367 560B 7-8-96

SPECTACLE BUCKLE  
1550-1650.  
C  
LITTLE TANK HILL  
909. B. RB.  
1914.98838778.24-12-05

SPECTACLE BUCKLE  
1650-1700.  
ONE PASTE STONE IN FITU.  
P C  
LITTLE TANK HILL  
909. C. RB.  
1915.98838778.24-12-05

DOUBLE-LOOP BUCKLE 1500-1650  
KNOP AT EACH END OF STRAP BAR. P  
FOUR ACRES  
1308. B. ET.  
2317.00618709.26-9-08





COPPER-ALLOY  
BUCKLE  
c 1650-1720  
WOOL PARK  
906.A. RP.  
2024.9883 8778.3-5-06



DOUBLE LOOP BUCKLE  
1570-1700  
APPLEDORE HILL  
816.C. JP.  
2313.9965 8790.31-8-08



DOUBLE LOOP  
BUCKLE  
1500-1650  
FOUR ACRES  
1308.F. ET.  
2320.0061 8709.26-9-08



DOUBLE LOOP BUCKLE  
1500-1650  
FOUR ACRES  
1308.A. ET.  
2343.0061 8709.28-1-09



DOUBLE LOOP OVAL  
BUCKLE. 1350-1650  
THORN PARK  
1104.B. PG.  
2367.0083 8758.23-10-09



DOUBLE-LOOP  
BUCKLE  
1550-1650  
WELL PARK  
995.A. PG.  
2402.0083 8758.10-11-10



"SPECTACLE"  
BUCKLE  
1350-1650  
WELL PARK  
995.B. PG.  
2419 0083 8758 16-2-15

Rectangular and Trapezoid Buckles



TINNED COPPER-ALLOY  
TRAPEZOID BUCKLE.  
c 1620-1680.  
53mm x 38mm - P  
FOUR ACRES  
504 1308A. 25-10-97



COPPER-ALLOY  
TRAPEZOID BUCKLE  
17th CENTURY  
(1570-1700)  
SEVEN ACRES  
941 997A 28-9-99



COPPER-ALLOY BUCKLE  
WITH FLUTED BARS.  
15th-18th CENTURY.  
(1450-1600) P C  
THORN PARK  
363 1104L 28-4-97



DOUBLE LOOP  
SUB-RECTANGULAR  
BUCKLE.  
19th to 20th CENTURY.  
HILL CLOSE  
186 E 4-11-96



DOUBLE LOOP  
TRAPEZOIDAL  
BUCKLE  
c 1570-1700  
GLOBE FIELD  
1225 1101A 18-8-08



COPPER-ALLOY  
BUCKLE.  
WITH PART OF  
LEATHER STRAP. RECENT  
HILL  
574 440 C. 4-2-98



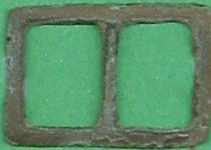
SPUR BUCKLE  
c. 1650.  
THORN PARK  
1104.A. PG.  
2395.0083 8758.30-9-10



COPPER-ALLOY KNEE  
BUCKLE.  
LOWER HAM  
617 1397 C 31-3-98



GIRDLE BUCKLE  
1600-1700  
NEWTON'S FIELD  
1477 730B 10-10-03



RECTANGULAR BUCKLE  
1600-1700  
PARSONAGE PARK  
992 A RB  
1567 0109 8754 22-3-04



VERY SLIM BUCKLE  
OR TIGHTENER.  
LONG FIELD  
812A NS.  
1641 0035 8794 15-5-04



BROKEN COPPER-  
ALLOY BUCKLE WITH  
FLUTED BAR. EVIDENCE  
OF TINNING. 15 C.  
WILL PARK  
902 929P 26-3-99



COPPER-ALLOY  
RECTANGULAR  
BUCKLE. 17-18th  
CENTURY.  
GREENS  
942 798A 1-5-99



RECTANGULAR BUCKLE  
RECENT?  
FIFTH FORD PARK  
1788.A. T&P.M.  
1924.0210 8624.12-1-06



TRAPEZOID SPUR  
BUCKLE 1680-1680.  
HEAVILY TINNED.  
AS NEW! P C  
BRAKES CLOSE  
910.E. RH.  
1965.9883 8778.7-2-06



RECTANGULAR BUCKLE  
WITH PIN.  
c 1670-1700  
HICHER LAMB PARK  
993.D. PG.  
2287.0109 8754.31-3-08



RECTANGULAR  
SHEET COPPER-ALLOY  
BUCKLE  
P C  
THORN PARK  
1104.C. PG.  
2387.0083 8758.23-10-09



Two-piece Buckles

COPPER-ALLOY TWO-PIECE BUCKLE. 1690-1720  
GREAT CONICAR 1125 2011E 19-1-00

CAST PENTER SHOE BUCKLE. 1720-1790. TWO-PIECE.  
GILLBROOK ORCHARD 1203 1463 B 14-6-00

SHOE BUCKLE WITH REMAINS OF IRON CHAPE. POSSIBLY JACOBAN 1650-1720  
HIGHER HAM 285 E 7-2-97

GEORGIAN TWO-PIECE SHOE BUCKLE. 1720-1790. COMPLETE WITH LOOP CHAPE & 'PITCHFORK' TONGUE.  
HIGHER MEADOW 1269 474A 11-8-01

COPPER-ALLOY SHOE BUCKLE. GEORGIAN.  
ORCHARD 396 1025 29-5-97

GEORGIAN SHOE BUCKLE. EXCESSIVE CURVATURE INDICATES A SHOE BUCKLE. 18 C  
GREAT BRAKE 31 7-6-96

COPPER-ALLOY KNEE BUCKLE C. 1660-1720  
THORN PARK 512 1104 F 1-11-97

TWO-PIECE BOOT OR GARTER BUCKLE 1720-1790  
SEVEN ACRES 1151 997F 10-4-00

COPPER-ALLOY TWO-PIECE BUCKLE. PROBABLY JACOBAN  
BRAKE'S CLOSE 470 910/835 B 7-9-97

SHOE OR KNEE P BUCKLE. CAST COPPER WITH DRILLED FRAME FOR SEPARATE SPINDLE. C. 1660 TO 1720.  
HILL CLOSE 161 D 23-10-96

KNEE BUCKLE C. 1720-1790's  
THORN PARK 1499 1109A 2-9-03

COPPER-ALLOY TWO-PIECE BUCKLE 1690-1720.  
HILL CLOSE 889 1307C 5-1-99

GEORGIAN KNEE BUCKLE 1660-1720  
BONFIRE 1105 B.P.G. 1655 00888758 23-6-04

COPPER-ALLOY TWO-PIECE SHOE BUCKLE C. 1750-1790's. VERY LARGE. EVIDENCE OF TANNING.  
MOORES MEADOW 1007 571A 23-6-99

COPPER-ALLOY TWO-PIECE BUCKLE GEORGIAN.  
INNER BUSHES 991 347E 11-6-99

COPPER-ALLOY CHILD'S SHOE BUCKLE? TWO-PIECE TYPE, WITH SEPARATE PIN. GEORGIAN  
BRAKE'S CLOSE 448 910/835F. 2-8-97

CAST COPPER BUCKLE CURVATURE SUGGESTS A SHOE BUCKLE. EVIDENCE OF GILDING C. 1660-1720 DRILLED FOR SPINDLE.  
MINTY CLOSE 177 D 30-10-94

GEORGIAN TWO-PIECE KNEE BUCKLE 1660-1720  
SEVEN ACRES 1093 1102D 13-10-99

GEORGIAN TWO-PIECE BUCKLE  
LOWER LAMB PARK 1107 A RD. 1531 01098754 10-3-04

GEORGIAN SHOE BUCKLE  
HILL CLOSE 1436 1307D 17-8-03

GEORGIAN TWO-PIECE KNEE BUCKLE  
HIGHER LAMB PARK 993 F RB. 1536 01098754 10-3-04

COPPER-ALLOY SHOE OR KNEE BUCKLE C. 1660-1720's.  
PARSONAGE PARK 992A RB. 1742 01098754 7-1-05

COPPER-ALLOY TWO-PIECE BUCKLE 1690-1720  
THE LAWN 1130 1310B 1-2-00

CAST COPPER-ALLOY SHOE OR KNEE BUCKLE C. 1660-1720. SPINDLE, CHAPE & PIN MISSING  
LAWN. 510 1310H 29-10-97

TWO-PIECE BUCKLE 1720-1790  
PARSONAGE PARK 992 B RB 1619 01098754 19-4-04

GEORGIAN SHOE BUCKLE  
HILL CLOSE 1436 1307D 17-8-03

GEORGIAN TWO-PIECE KNEE BUCKLE  
HIGHER LAMB PARK 993 F RB. 1536 01098754 10-3-04

GEORGIAN SHOE BUCKLE  
PARSONAGE PARK 992 B RB 1623 01098754 22-4-04

KNEE BUCKLE C. 1660-1720  
2-PIECE, WITH RUSTED IRON SPINDLE  
ELM FIELD 927A JG. 1515 001877 24-12-03

GEORGIAN KNEE OR SHOE BUCKLE. 1660-1720.  
APPLE TREE HILL 925 B. RH. 1853.99908766. 23-10-05

JACOBAN TWO-PIECE BUCKLE. 1660-1720.  
MIDDLE FIELD 908. D. RH. 1870.98838778. 19-11-05

CAST COPPER-ALLOY SHOE OR KNEE BUCKLE. C. 1660-1720. TWO-PIECE, THINNED CHAPE MISSING  
SEVEN ACRES 697 1102A 30-7-98

COPPER-ALLOY TWO-PIECE BUCKLE 1660-1720  
BRAKE'S CLOSE 470 910/835 B 7-9-97

COPPER-ALLOY KNEE OR GARTER BUCKLE WITH PIN & BROKEN STUD CHAPE. GEORGIAN  
BRAKE'S CLOSE 447 910/835.Q 1-8-97

TWO-PIECE OVAL SHOE OR KNEE BUCKLE. 1660-1720. WITH FOLDED SHEET CHAPE  
BRAKE'S CLOSE 910-A. RH. 1938.98838778. 26-1-06

GEORGIAN TWO-PIECE KNEE BUCKLE & BROKEN STUD CHAPE. 18 CENTURY.  
GREAT BANEYS 832. B. RH. 2021. 00258780. 14-4-06

GEORGIAN KNEE BUCKLE. 1660-1720.  
ELM FIELD 927. C. JG. 2045. 00148772. 25-5-06

GEORGIAN TWO-PIECE BUCKLE.  
WOOL PARK 908. G. RH. 1892.98838778. 12-12-05

GEORGIAN TWO-PIECE BUCKLE.  
MIDDLE FIELD 908. G. RH. 1896.98838778. 12-12-05

TWO-PIECE GEORGIAN KNEE BUCKLE. 1720-1790.  
HILL CLOSE 932. A. PG. 2062. 00638784. 24-8-06

TWO-PIECE KNEE BUCKLE C. 1660-1720  
MIDDLE FIELD 999. A. PG. 2217. 00518773. 9-10-07

TWO-PIECE GARTER BUCKLE. 1720-1790.  
PIT PARK 926. A. RP. 2253.99908766. 27-11-07





FRAGMENT OF SILVER GEORGIAN TWO-PIECE BUCKLE

PARSONAGE PARK 934. B. JS. 2116.0122.8780.28.1.07



GEORGIAN SHOE BUCKLE 1720-1790

ELM FIELD 927. A. JG. 2254.00148772.27.11.07



TWO-PIECE GEORGIAN BUCKLE. 1660-1720

HIGHER FIELD 741. D. PG. 2298.00408819.9.5.08



GEORGIAN TWO-PIECE KNEE BUCKLE

MIDDLE FIELD 908. A. RH. 1878.9883.8778.6.12.05



RECTANGULAR TWO-PIECE BUCKLE

LOWER LAMB PARK 1107. A. PG. 2274.01098754.26.3.08



GEORGIAN TWO-PIECE SHOE BUCKLE

PARSONAGE PARK 934. B. JS. 2383.0122.8780.19.10.08

UKFED. 16096



RECTANGULAR TWO-PIECE BUCKLE

LONG FIELD 812. A. NS. 2375.00358794.3.3.10



TWO-PIECE SHOE BUCKLE. 1720-1790.

TWO ACRES 1358. B. PG. 2396.01708695.28.10.10



TWO-PIECE BUCKLE 1660-1720.

ELM FIELD 928. A. JG. 2393.00148772.29.9.10



ENGRAVED SHOE BUCKLE 1690-1720s

PIT PARK 926. A. 10.9.11 2412.99908766. R. P.

UKFED. 38241

Buckles with Integral Plates



CAST COPPER-ALLOY DOUBLE-LOOPED BUCKLE

LATE 13<sup>th</sup> TO 14<sup>th</sup> CENTURY. BROKEN FRAGMENT OF LEATHER ON PLATE? P

FOUR ACRES 663 1308A. 3.7.98



COPPER-ALLOY BUCKLE WITH INTEGRAL PLATE 1250-1500. TRACES OF GILT.

LOWER FIELD 397 1236A 29.5.97



FRAGMENT OF SINGLE-LOOP SPUR BUCKLE WITH INTEGRAL PLATE. C1250-1400

HIGHER SHEPHERD PARK 1398 1000A 4.6.03



SINGLE-LOOP BUCKLE 1250-1400 WITH INTEGRAL PLATE. P

HIGHER LAMB PARK 993 A. RB. 1799 01098754 24.4.05

29

Annular Buckles



COPPER-ALLOY ANNULAR BUCKLE 1370-1500

HEATHFIELD 3 ACRES 1284 318C 4.9.01



LADIES' BUCKLE?

HIGHER LAMB PARK 993 A. RB. 1701 01098754 16.10.04



ANNULAR BUCKLE 1650-1720.

SCORE PITCHERS 742. D. PG. 2264.00408814.11.2.08



OVAL BUCKLE 1650-1700. COPPER ALLOY.

HIGHER SHELVES 79 K 22.9.96



OVAL COPPER-ALLOY BUCKLE. A MODERN LADY'S BUCKLE.

SEVILLE MOOR 1073 1241F 2.10.99



KNEE BUCKLE C1660-1720

STILE PARK 1474. D. RH. 2480 2.11.15



**Asymmetrical Buckles**



ASYMMETRICAL  
BUCKLE.  
C 1575-1700 P  
LOWER LAMB PARK  
1107 D RB  
1532 01098754 10-3-04



ASYMMETRICAL  
BUCKLE  
1350-1450  
BROKEN C  
NEWTON'S FIELD  
1879 730A 19-5-03



COPPER-ALLOY  
BUCKLE  
1575-1700. P  
WOOL PARK  
906. B. RP.  
2002-98838778.21-9-06

**Webbing Tighteners**



COPPER-ALLOY BELT  
OR WEBBING TENSIONER  
RECENT.  
HOME CLOSE  
476 1087D 13-9-97



BELT CLASP.  
MODERN?  
FOUR ACRES  
1308B. ET.  
1828.00618709.14-9-05



DIE-CAST WAISTCOAT  
TENSIONER.  
MODERN. C  
PLT.  
1027. G. RH.  
1873.98958755.19-11-05

WEBBING TIGHTENER  
LON G CLOSE  
1370 1707D 12-4-03



COPPER-ALLOY STRAP  
TENSIONER. EVIDENCE  
OF GILDING. PROBABLY  
VICTORIAN TO RECENT.  
COUCHES  
434 1520A 20-7-97



WEBBING 'BUCKLE'  
RECENT.  
GLOBE FIELD  
1065 1101A 23-9-99



WEBBING TIGHTENER  
RECENT. C  
SEVEN ACRES  
722 1102K 10-8-98



COPPER-ALLOY TWO-  
PINNED WEBBING  
BUCKLE.  
MODERN.  
SIX ACRES  
1009 745D. 30-6-99



WEBBING 'BUCKLE'.  
NO PIN, SO TECHNICALLY  
NOT A BUCKLE. USED ON  
MILITARY WEBBING FROM  
19<sup>TH</sup> CENTURY TO DATE.  
LITTLE GRAYTONS  
172 C 30-10-96

**Other Clasps**



SNAKE-FORM BELT  
HOOK.  
18-19 CENTURY. C  
SEVEN ACRES  
1263 997A 3-8-01



HALF OF MODERN  
CLASP BUCKLE.  
EVIDENCE OF  
ENAMELLING.  
FERN PARK  
34 H 17-8-96



PART OF A CAST  
COPPER-ALLOY CLASP  
BUCKLE, DEPICTING  
NEPTUNE. VICTORIAN.  
BONFIRE  
1300 1105D 27-9-01



HALF A LADY'S  
CLASP BUCKLE.  
PROBABLY VICTORIAN  
HANCES FIELD  
1314 1106A 14-12-01



HALF OF A  
LADY'S BUCKLE.  
EVIDENCE OF  
GILDING  
FOUR ACRES  
1485 1308C 17-8-03





HALF OF SLABE - WALLACE MILITARY BELT BUCKLE. 1880-1903. RING CLIP IS MISSING.  
ELM FIELD  
32 C 25.8.96



PRESSED COPPER-ALLOY FACE-PLATE OF A 'CRICKET' BUCKLE. VICTORIAN. C1880  
CO TTLE  
1048 ? A 10.9.99



HALF A CLASS-BUCKLE. TRACES OF GILT  
ELM FIELD  
1919 927/928 12.6.03



BELT CLASP HALF A CLASS 19-20 C.  
LOWER FIELD  
930A P.A.  
1784 00518773 26.3.05



STUD CHAPE FOR TWO-PIECE BUCKLE. GEORGIAN. STUD MISSING.  
PARSONAGE PARK 934. F. JS.  
2357.01228780.19.10.08



CRUDELY-MADE STRAP-END? FOLDED SHEET COPPER WITH LEATHER OR CLOTH BETWEEN.  
PARSONAGE PARK 992. H. RB.  
2007.01098754.28.3.06



GEORGIAN BUCKLE STUD-CHAPE.  
GREAT TANK FIELD 1026. D. RP.  
2084.98838778.21.9.06



GEORGIAN BUCKLE CHAPE.  
FOUR ACRES 130B. C. ET.  
2220.06618709.11.10.07



STRAP-END?  
POSTLAKE POOL FIELD 822. P. JP.  
2246.99658790.27.10.07

**Buckle Parts**



COPPER-ALLOY LOOP CHAPE. USED AS AN ADDITIONAL FASTENER FOR LARGE BUCKLE. TONGUE MISSING 1720-90  
HIGHER BURGES  
501 942 C 19.10.97



STUD CHAPE & PIN 1690-1720 UNUSUAL TO FIND PIN & CHAPE COMPLETE, BUT BUCKLE MISSING  
HIGHER LAMB PARK 993D. RB.  
1721 01098754 18.11.04



PRONG FROM A LOOP CHAPE 1720-1770.  
BONFIRE  
256 F 20.1.97



COPPER-ALLOY 'PITCH-FORK' TONGUE. FROM A GEORGIAN SHOE BUCKLE LOOP CHAPE 1720-1770  
HIGHER SHELVEYS  
746 740A 27.8.98



COPPER-ALLOY 'PITCH-FORK' TONGUE. FROM A GEORGIAN SHOE BUCKLE LOOP CHAPE. 1720-1770  
BONFIRE  
805 1105F 19.10.98



BROKEN STRAP END. PRIMITIVE DECORATION SUGGESTS A MEDIEVAL DATE. BRONZE FRONT WAS RIVETED THROUGH LEATHER STRAP TO IRON BACK PART.  
SEVEN ACRES  
111 F 19.10.96



STRAP-END? BADLY CORRODED. TWO IRON RIVETS. MEDIEVAL/TUDOR?  
PARSONAGE PARK 992 G. RB.  
1716 01098754 5.11.04



BUCKLE PLATE OR STRAP-END?  
EIGHT ACRES  
1387 1093C 23.5.03



TWO COPPER SHEETS RIVETED WITH SIX RIVETS. STRAP END?  
FOUR ACRES  
1444 1308C 27.8.03



STRAP-END? SILVER OR TIN-PLATED ON ONE SIDE  
FOUR ACRES  
1441 1308B 19.8.03



FRAGMENT OF FLUTED BUCKLE EDGE?  
BRAKES CLOSE 910. C. RH.  
1982.98838778.9.2.06



COPPER-ALLOY STRAP END. MEDIEVAL?  
MIDDLE FIELD 908. C. RH.  
1885.98838778.6.12.05

**Harness buckles.** These are readily identified by their robust construction and offset bar to facilitate the fixing of a thick strap. Many were of iron. Only a selection of these very common finds is displayed.



BRASS HARNESS BUCKLE  
THREE FIELDS  
38 29B 14.8.99

IRON PIN. PIVOT OF HARNESS ATTACHED. RECENT.  
'EXTON FLATS'  
887 A. 21.1.99



HARNESS BUCKLE  
HIGHER LAMB PARK 993A. RB.  
1688 01098754 2.10.04



HARNESS BUCKLE  
PARSONAGE PARK  
1311 992C 23.10.01



BRASS HARNESS BUCKLE. DECORATIVE SHAPE  
WEST PARK  
1010 567A 3.7.99



## HORSE DECORATIONS & ASSOCIATED ITEMS

Oval horse brasses and harness buckles as above are the items most frequently found. The brasses are of a relatively recent origin, with the cast ones being older than those pressed from brass sheet. Iron horse shoes are interesting but unwelcome items, as they are difficult to preserve, and so most detectorists try to screen these and other iron items out.

COPPER-ALLOY  
HARNESS MOUNT.  
EVIDENCE OF  
FINNING.

GILLBROOK ORCHARD  
213 1463A 1-7-00

COPPER ALLOY DOMED  
HARNESS MOUNT  
18-19 CENTURY.

BRACKS CLOSE  
445 910/835N 1-8-97

LARGE COPPER-ALLOY  
HARNESS STUD

ELM FIELD  
618 928 D 5-98

COPPER-ALLOY BIT  
& CHEEK PLATE  
FOUND 5 FIELDS  
AWAY FROM OTHER  
CHEEK PLATE (1126)  
PIT PARK  
1128 19 1-1-00

COPPER-ALLOY  
HARNESS, BELT, OR  
FURNITURE MOUNT.

SEVEN ACRES  
840 997N. 7-11-98

HORSE HARNESS  
MOUNT 16" TO 17"  
CENTURY.

SEVEN ACRES  
109 A 13-10-96

MACHINE-STAMPED  
HORSE BRASS

LOWER TWO ACRES  
1129 1400E 5-2-00

'VINE' PATTERN  
HORSE BRASS. LATE  
19<sup>th</sup> OR 20<sup>th</sup> CENTURY.  
CAST BRASS.

LITTLE FIVE ACRES  
243 E 13-1-97

HORSE BIT  
CHEEK PLATE

3-CORNERED FIELD  
126 2010D 21-1-00

PART OF A COPPER-  
ALLOY HARNESS  
'SWINGER'

GILLBROOK ORCHARD  
1200 1463C 12-6-00

COPPER-ALLOY  
CART REIN-RING

GILLBROOK ORCHARD  
1307 1463Q 5-10-01

CAST, DECORATIVE  
HARNESS MOUNT?  
EVIDENCE OF LEATHER  
BETWEEN CLAMP PLATE

HIGHER SOX HILL  
1397 1004C 3-6-03

BRASS DECORATIVE  
HARNESS LOOP

LONG CLOSE  
1014 463B 14-7-99

UNUSED HARNESS  
RIVET

ELM FIELD  
22 J 30-7-96

BRASS HARNESS  
'SWINGER'.  
FINIAL MISSING  
19<sup>th</sup>-20<sup>th</sup> CENTURY.  
FURZE BUSHES  
1070 458A 1-10-99

BRASS HARNESS  
LOOP. RECENT.

"BYTON FLATE"  
888 B. 21-1-99





PEWTER HORSE BOSS  
EVIDENCE OF SILVER  
PLATE. ROCOCO STYLE IS  
TYPICAL OF EARLY 18<sup>th</sup>  
CENTURY.  
WAY CLOSE  
405 312A 16-6-97



SHIELD-SHAPED  
HORSE BRASS.  
CAST-PROBABLY  
VICTORIAN  
HOME CLOSE  
475 1087B 13-9-97



BRIDLE BOSS OR  
ROSETTE. LATE 18<sup>th</sup>-  
19<sup>th</sup> CENTURIES. CAST  
LEAD.  
MIDDLE FIELD  
27 732F 17-6-96



COPPER-ALLOY  
CIRCULAR HARNESS  
MOUNT. REMAINS  
OF IRON PIN AT REAR  
HIGHER HAM  
1021 1390G 26-7-99



TIN-PLATED, COPPER-  
ALLOY, DISC HARNESS  
MOUNT. SINGLE,  
CENTRAL LUG AT REAR  
HILL CLOSE  
871 1307I 16-12-98



ENGRAVED OVAL  
HORSE BRASS  
HIGHER LAMB PARK  
993 B RB  
1550 01098754 18-3-04



COPPER-ALLOY  
HARNESS MOUNT  
HIGHER HAM  
595 1390G. 12-2-98



BARREL-SHAPED  
CAST BRASS HARNESS  
MOUNT.  
VICTORIAN/RECENT.  
WILL PARK  
929 A JS.  
813 00298762 26-10-98



ROUND COPPER-ALLOY  
HARNESS MOUNT.  
PATTERNED WITH  
CONCENTRIC RINGS  
BRIDGE CLOSE  
766 750A 10-9-98



OVAL, CAST &  
ENGRAVED HARNESS  
BRASS.  
LOWER FIELD  
629 1236B 17-5-98



RECTANGULAR HORSE  
BRASS.  
ENGRAVED WITH  
LETTERS "HB" ?  
FIRST SUMMER HILL  
1004 456E 19-6-99



OVAL, CAST COPPER-  
ALLOY HARNESS  
MOUNT.  
WILL PARK  
756 929B 3-9-98



OVAL HORSE BRASS.  
STAMPED FROM SHEET  
BRASS. PROBABLY 20<sup>th</sup>  
CENTURY.  
APPLE TREE HILL  
20 B 31-8-96



UNCUT CAST HARNESS  
RIVETS. EVIDENCE  
OF TRAVELLING  
FARRIER IN ELM  
FIELD?  
ELM FIELD  
21 B 12-8-96



RECTANGULAR  
PRESSED BRASS  
HARNESS MOUNT  
ENGRAVED MONOGRAM  
LONG HAY FIELD  
1282 320A 4-9-01



COPPER-ALLOY  
DOMED HARNESS  
MOUNT.  
LOWER FIELD  
1016 784C 15-7-99



PEWTER HARNESS  
BOSS. FLORAL PC  
CENTRE PIECE.  
TWO IRON LUGS. GEORG  
WELL PARK  
1090 995A 12-10-99



CAST PEWTER  
HARNESS DECORATION  
2 INTEGRAL REAR LUGS  
& IRON PLUG 19<sup>th</sup> C. C  
BLAKE'S PLOT  
1190 1798A 7-6-00



HARNESS STRAP  
END?  
QUARRY PARK  
996 A PG.  
1657 00838768 26-6-04



COPPER-ALLOY  
HARNESS MOUNT,  
WITH IRON MOUNTING  
LUG  
WILL PARK  
330 A 22-3-97

PART OF A HORSE  
BIT. ONE FACE  
PLATE MISSING.  
19<sup>th</sup>-20<sup>th</sup> CENTURY  
ORCHARD  
375 1097A 22-5-97





COPPER-ALLOY  
HARNESS RING  
SOUTH CLOSE  
1293 357F 6-9-01



CAST COPPER-ALLOY  
HORSE BRIDLE RING  
NINE ACRES  
862 994G 25-11-98



HORSE HARNESS  
RINGS. DATE &  
PRECISE USE UNKNOWN  
ONG FIELD  
R 812A 3-8-99



SMALL OVAL HORSE  
BRASS.  
WINDMILL HILL  
1034 19B 11-8-99



BRASS HARNESS  
LOOP  
COUCHES  
573 1520E 2-2-98



HARNESS HOOK  
PIT PARK  
1468 926A 30-9-03



BRASS HOOK.  
PART OF A  
CARRIAGE FITTING?  
FERN PARK  
60 E 16-8-96



ENGRAVED OVAL  
HORSE BRASS. CAST.  
ENGRAVED "HC"?  
MOOR LANE FIELD  
982 583A 7-6-99



COPPER-ALLOY HARNESS  
PENDANT?  
INCISED 'SHELL' PATTERN  
DATE UNKNOWN.  
SEVEN ACRES  
733 1102F 15-8-98



RECTANGULAR,  
ENGRAVED HORSE  
BRASS.  
FIR FIELD  
801 809A 18-10-98



HORSE PENDANT  
PROBABLY 14<sup>TH</sup> CENTURY.  
COMMON HORSE DECOR-  
ATION IN MIDDLE AGES.  
CAST COPPER ALLOY  
ELM FIELD  
92 J 14-6-96



HORSE BRASS  
INSCRIBED: "RD" -  
RICHARD DAWORTHY?  
BRIDGE CLOSE  
353 750 B 25-4-97



ENGRAVED OVAL  
HORSE BRASS.  
PRESSED SHEET-EDGE  
BROKEN OFF. 20<sup>TH</sup> CENTURY  
HIGHER RYE PARK  
469 102A 4-9-97



SHEET COPPER-ALLOY  
HARNESS PENDANT.  
RADIATING DOT &  
RING PATTERN. 13-14<sup>C</sup>  
HOME CLOSE P  
1087 D. PC.  
1665 9990 8735 30-7-04



ENGRAVED HORSE  
BRASS. ATTACHED TO  
A CART - EVIDENCE OF  
WOOD STUCK TO BACK?  
ORCHARD  
377 1097B 22-5-97



HEART-SHAPED  
HARNESS MOUNT  
18-19 C.  
P  
PARSONAGE PARK  
992 B RB  
1587 0109 8754 24-04



ENGRAVED OVAL  
HORSE BRASS  
HEATHFIELD  
187ATT.  
1650 9983 8925-14-6-04



INSCRIBED HORSE P  
MOUNT. CAST COPPER-  
ALLOY WITH RAISED  
INSCRIPTION "RIDC"  
PROBABLY VICTORIAN  
SANDY HILLS  
480 1235 C 12-7-97



RECTANGULAR  
HORSE BRASS.  
ENGRAVED.  
HANDS FIELD  
1316 1106C 14-12-01

IN A SEPARATE  
DISPLAY CASE  
WITH 2391

SADDLE POMMEL  
COVER.  
ONE HALF. 16-17 C  
FOUR ACRES  
1470 1028A 1-10-03  
UNSPD. 25248



HORSE-EMBLEM  
HARNESS MOUNT?  
FOUR ACRES  
1358 1308F 24-8-02



OVAL HARNESS BRASS.  
CAST, WITH FOUR  
INTEGRAL BRASS LUGS.  
INSCRIBED "HB"?  
BROAD RYDON  
1025 1306D 28-7-99



CAST, COPPER-ALLOY  
HEART-SHAPED  
HARNESS MOUNT.  
18-19 C.  
SEVEN ACRES  
1095 1102J 18-10-99



HEART-SHAPED  
HARNESS BRASS. INC.  
"I. BURTON, WOODBURY"  
ISAAC BURTON WAS A  
CARRIAGE & LIVES AT  
'HAYDENE' IN THE 1860s  
DRY MEADOW  
1058 794J. 14-9-99



HEART-SHAPED,  
PRESSED HORSE  
BRASS. RECENT.  
LOWER CROSS PARK  
1091 419A 23-8-99





OVAL HORSE BRASS.  
ATTACHED TO LEATHER  
FLAP WITH BRASS  
PRONGS. RECENT.  
HIGHER SHEPHERD PARK  
641 1000 J. 14-6-98



CAST COPPER-ALLOY  
REIN GUIDE,  
SQUARE & DOT  
PATTERN  
LOWER FIELD(P)  
682 1236 F. 20-7-98



HARNESS MOUNT IN  
THE FORM OF AN 'H'  
19<sup>th</sup>-20<sup>th</sup> CENTURY  
ELM FIELD  
606 928 G. 20-3-98



COPPER-ALLOY  
SHELL-PATTERN  
HARNESS OR  
FURNITURE MOUNT  
GILLBROOK, OSWALD  
1194 1463 A. 11-6-00



FLAT HOOK. PART  
OF A CARRIAGE  
FITTING?  
FERN PARK  
59 G 16-8-96



HEART-SHAPED  
HARNESS MOUNT  
MIDDLE FIELD  
999 C. P.C.  
1757 00518773 12-2-05



COPPER-ALLOY  
BRIDLE BOSS  
19<sup>th</sup> CENTURY.  
HOME, MESSING  
467 483 C. 28-8-97



CIRCULAR HARNESS  
MOUNT.  
THORN PARK  
1361 1104 B. 7-10-02



LATE SAXON  
STIRRUP MOUNT.  
FOUR ACRES  
653 1308 A. 25-6-98



PRESSED COPPER-  
ALLOY REIN GUIDE  
FOUR ACRES  
288 E 13-2-97



COPPER-ALLOY  
REIN GUIDE  
PARSONAGE PARK  
992 D. RB.  
576 01098754 16-3-04



PRESSED COPPER-  
ALLOY REIN GUIDE  
HIGHER SHEPHERD PARK  
1084 1000 C. 8-10-99



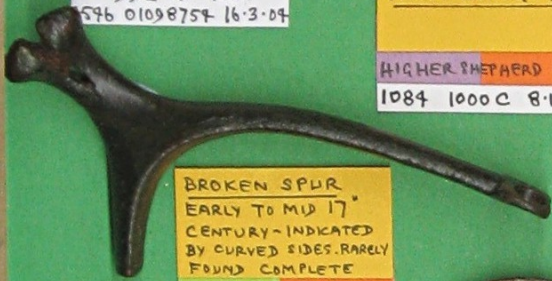
CAST COPPER-  
ALLOY REIN  
GUIDE  
18<sup>th</sup>-19<sup>th</sup> C. P  
FOUR ACRES  
665 1308 D. 3-7-98



SPUR TERMINAL,  
WITH DROP PENDANT  
& BUCKLE ATTACHMENT  
TINNED, SO PROBABLY  
VICTORIAN TO RECENT.  
SEVEN ACRES  
807 1102 C. 21-10-98



COPPER-ALLOY  
REIN GUIDE  
WINDMILL HILL  
894 800 C. 26-1-99



BROKEN SPUR  
EARLY TO MID 17<sup>th</sup>  
CENTURY-INDICATED  
BY CURVED SIDES, RARELY  
FOUND COMPLETE  
LOWER FIELD  
42 I 16-9-96



BROKEN SPUR ARM  
HIGHER LAMB PARK  
993 A. RB.  
1776 01098754 10-3-05



BROKEN SPUR  
VICTORIAN/MODERN  
PARSONAGE PARK  
992 C. RB  
1720 01098754 18-11-04



ROUND HARNESS  
MOUNT.  
HIGHER LAMB PARK  
993 C. P.C.  
2349 01098754 16-8-09



ROUND HARNESS  
MOUNT.  
APPLE TREE HILL  
925 F. RH.  
1857 99908766 23-10-05



RECTANGULAR HORSE  
BRASS.  
ENCRAVED WITH 'B'  
FERN PARK  
813 A. P.  
1986 00108791 16-2-06



HEART-SHAPED  
HARNESS BRASS  
YONDER SHELVES  
736 A. P.C.  
1840 00908914 4-10-05



KNOPPED HARNESS  
MOUNT?  
BROKEN. IRON PIN  
THROUGH REAR LUG.  
FOUR ACRES  
1028 A. RH.  
1867 98898750 19-11-05



SPUR TERMINAL  
17 C.  
FOUR ACRES  
1308 I. ET.  
2195 00618709 4-9-07



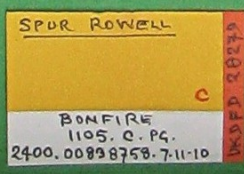
ROUND HARNESS  
MOUNT.  
HILL CLOSE  
1307 D. ET.  
2088 00618709 28-9-06



HARNESS FITTING?  
ELM FIELD  
927 C. J.C.  
2169 00128732 11-7-07



SPUR FRAGMENT  
QUARRY PARK  
996 A. P.C.  
2406 00898758 24-11-10



SPUR TERMINAL  
BONFIRE  
1105 C. P.C.  
2400 00898758 7-11-10





LOWER HALF OF A  
CURB BIT.  
WINDMILL HILL  
800. A. JS.  
2185.01048787.18.8.07



BREECHING DEE  
BUCKLE USED TO HOLD  
BREECHING STRAP  
OF ADRAFT HORSE. C  
APPLEDORE HILL  
816. E. JP.  
2315.99658790.31.8.08  
USED. 15038



BREECHING DEE  
(HARNESS BUCKLE).  
19-20 C.  
LOWER LAMB PARK  
1107E RD.  
1818 01098754 6.5.05



CAST COPPER-ALLOY  
HARNESS MOUNT  
GREAT TANK HILL  
1026. A. RH.  
1997.9883 8778. 3.3.06



## MOUNTS

Under this heading is a whole range of artifacts of copper-alloy which were originally attached to leather, cloth or wood for mainly decorative purposes. I have included furniture fittings in this group. When the precise identification or use of the artifact is doubtful, it is often dumped into this category !



**HARNESSE BOSS (PART)**  
18-19 C.  
FOUR ACRES  
685. A. PC.  
2373. 00408814. 20-2-10



**BOOKCLASP**  
15-17<sup>th</sup> CENTURY  
P  
HILL CLOSE  
1307. A. ET.  
2316. 00618709. 26-9-08



**BOOK CLASP**  
FOUR ACRES  
1308. A. ET.  
2340. 00618709. 11-3-09



**CAST COPPER-ALLOY  
STAG-HEAD FURNITURE  
MOUNT.**  
HORNS BROKEN.  
19<sup>th</sup> CENTURY.  
WILL PARK  
774 929B 16-9-98



**DECORATIVE LEG  
FROM A VESSEL?**  
C  
GREAT TANK HILL  
1026. D. RM.  
1907-98838778. 22-12-05



**ONE SIDE OF A  
PRESSED SILVER  
PHOTO FRAME.** C  
PROBABLY 20<sup>th</sup> CENTURY  
PIT PARK  
1087 926C 11-10-99

**PART OF A PRESSED  
SILVER PHOTO FRAME**  
PROBABLY 20<sup>th</sup> CENTURY.  
C  
PIT PARK  
1086 926A 11-10-99

**PIECE OF SILVER PHOTO  
OR MIRROR FRAME.**  
PROBABLY 20<sup>th</sup> CENTURY.  
VERY BENT SO ANNEALED  
& STRAIGHTENED. C  
PIT PARK  
342 E 3-4-97



**BIRD-SHAPE  
FURNITURE MOUNT**  
DISSEP. 12856  
HILL CLOSE  
1462 1307B 28-9-03

**PART OF A PRESSED  
SILVER PHOTO FRAME.**  
PROBABLY 20<sup>th</sup> CENTURY  
C  
PIT PARK  
1088 926A 12-10-99



**COAT HOOK**  
GEORGIAN/VICTORIAN  
ELM FIELD  
927 34. B  
1502 001877 11-12-03

**PRESSED SHEET COPPER  
-ALLOY BOSS.**  
POSSIBLY A VICTORIAN  
FURNITURE MOUNT.  
LONG MEADOW  
485 1622 B 21-7-97



**CAST FURNITURE  
MOUNT?**  
VICTORIAN.  
SOUTH CLOSE  
1287 357A 5-9-01





COPPER-ALLOY  
DRAWER ESCUTCHEON  
HAND-PUNCHED  
PATTERN. 3/4" PIN IN  
HOLE. POSSIBLY JACOBSEN.  
NINE ACRES  
863 994B 28-11-98

PUNCH-ENGRAVED  
COPPER-ALLOY  
DRAWER ESCUTCHEON  
WITH SPLIT PINS.  
POSSIBLY JACOBSEN.  
NINE ACRES  
914 994A 11-3-99



CAST PEWTER  
FURNITURE MOUNT?  
BROKEN AT EDGES,  
MOUNTING HOLE AT  
REAR. RECENT.  
HICHER SHEPHERD PARK  
1071 1000B 2-10-99

PART OF SHEET  
COPPER-ALLOY HINGE.  
LATE 17<sup>th</sup> CENTURY  
SEVEN ACRES  
865 1102B 29-11-98



DOOR OR DRAWER  
HANDLE ESCUTCHEON  
PLATE. PROBABLY  
18<sup>th</sup> CENTURY  
ELM FIELD  
217 A 12-6-96



COPPER-ALLOY  
BOOK MOUNT?  
PROBABLY VICTORIAN.  
NO MOUNTING DEVICES.  
- STUCK TO COVER?  
WINDMILL HILL  
851 800A 20-11-98



FURNITURE MOUNT.  
PROBABLY A SMALL  
DRAWER HANDLE  
ESCUTCHEON. GEARS/VK  
MEAD  
352 667H 23-4-97



CURTAIN-PULL KNOB  
WILL PARK  
768 929B 6-9-98

BASE-PLATE OF A  
LETTER CLIP.  
PROBABLY VICTORIAN  
THE PRIORY  
271 F 29-1-97



DRAWER HANDLE  
ESCUTCHEON.  
TWO ACRES  
135B. C. PC.  
2397-01708695. 28-10-10



COPPER-ALLOY  
MOUNT.  
RECENT. OF UNKNOWN  
LIFE.  
WINDMILL HILL  
900 800B 23-1-99



BOOK CLASP  
19" C.  
HICHER SOWHILL FIELD  
1004 JS. B  
1486 000875 4-12-03



COPPER-ALLOY DRAWER  
HANDLE.  
GEORGIAN/VICTORIAN.  
WILL PARK  
929 929A 26-3-98



DOOR BELL ESCUTCHEON  
HICHER SHEPHERD PARK  
410 1000 P 17-6-97



SHEET COPPER-  
ALLOY DRAWER  
HANDLE ESCUTCHEON?  
GEORGIAN/VICTORIAN  
PARSONAGE PARK  
1063 992B 21-9-99



BRASS COAT HOOK  
HICHER LAMB PARK  
993 E RB  
1571 01098754 22-3-04



HINGE-PLATE, OR  
STRAP-END?  
DOT & LINE PATTERN  
WILL PARK  
791 929A 30-9-98

BROKEN END OF HINGE  
FLAP.  
SEE ITEMS 1599 & 1618  
FOR OTHER BITS. 17C?  
PARSONAGE PARK  
992 A RB.  
1724 01098754 19-11-04



'ACORN' FURNITURE  
MOUNT.  
ELM FIELD  
927 JA. D  
1504 001877 11-12-03



DRAWER HANDLE  
ESCUTCHEON & SPINDLE  
EARLIER MIS-IDENTIFIED  
AS CIRCULAR WEIGHTS  
SEVEN ACRES  
114 H 13-10-96



KEY ESCUTCHEON?  
VICTORIAN/RECENT  
LITTLE FIVE ACRES  
790 1001 L 28-9-98



HINGE FLAP  
RING & DOT PATTERN  
17<sup>th</sup> C?  
PARSONAGE PARK  
992 A RB  
1618 01098754 19-4-04

BROKEN HINGE FLAP  
RING & DOT PATTERN  
17<sup>th</sup> C?  
PARSONAGE PARK  
992 C RB  
1599 01098754 8-4-04



WARDROBE KEY-  
ESCUTCHEON &  
HANDLE.  
SEVEN ACRES  
1259 1102 A 1-8-01



PART OF A BOOK CLASP  
HOOK END IS MISSING.  
DECORATED WITH CURVED  
LINES. DATE UNCERTAIN  
MIDDLE FIELD  
43 G 16-9-96



PART OF A PRESSED  
COPPER-ALLOY  
FURNITURE MOUNT.  
FRUIT PATTERN.  
GEORGIAN-VICTORIAN  
HOME ORCHARD  
1008 572B 23-6-99