

ORNATE COPPER-ALLOY
DRAWER HANDLE.
FLUTED WITH CENTRAL
FLOWER & BAND MOTIF.
PROBABLY GEORGIAN.
THORN PARK
495 1104D 16-10-97

COPPER-ALLOY
FURNITURE MOUNT.
THREADED SPINDLE
C
THORN PARK
793 1104A 1-10-98

FRENCH-STYLE
FURNITURE CASTOR
FERRULE. VICTORIAN
HIGHER FIELD
387 1100D 24-5-97

KEYHOLE ESCUTCHEON
GILLBROOK ORCHARD
1463 B. ET.
1681 00848600 24-9-04

BROKEN COPPER-
ALLOY COAT HOOK
GEORGIAN/VICTORIAN
C
GLOBE FIELD
1076 1101B 4-10-99

DECORATED SILVER
MOUNT.
PROBABLY PART OF
A PICTURE FRAME.
RECENT.
LONG FIELD
707 812I 3-8-98

1952
WILLEYS

ALUMINIUM TROPHY
SHIELD. ENGRAVED:
"1952 WILLEYS"
C
SECOND HILL FIELD
533 1689B. 12-12-97

CAST COPPER-ALLOY
DRAWER HANDLE
ESCUTCHEON.
PROBABLY 18TH CENTURY.
WINDMILL HILL
852 800C 20-11-98

KEYHOLE ESCUTCHEON
C
BRACKS CLOSE
910 A. RH.
1686 98838778 20-9-04

DRAWER HANDLE
ESCUTCHEON
FOUR ACRES
1465 1308E 28-9-03

CAST BRASS KNOB
SEVILLE MOOR
1072 1241B 2-10-99

KEYHOLE COVER OR
FURNITURE NAME
PLATE
C
BONFIRE
194 F 11-11-96

DRAWER ESCUTCHEON
18TH C.
GILLBROOK MEADOW
1352 1464A 28-7-02

CLOTHES HOOK
GEORGIAN/VICTORIAN
C
SEVEN ACRES
147 T 15-10-96

CIRCULAR MOUNT?
C
NEWTON'S FIELD
1380 730B 19-5-03

CAST COPPER-ALLOY
MOUNT, OR DOOR
STOP? WELL-PATINATED
WITH BITUMEN COATING
MEDIEVAL?
SEVEN ACRES
923 997B 22-3-99

DRAWER HANDLE
ESCUTCHEON.
PROBABLY GEORGIAN.
MIDDLE FIELD
94 B 20-7-96

POT KNOB
PARSONAGE PARK
992 C. RB
1591 01098754 5-4-04

DRAWER HANDLE
GEORGIAN/VICTORIAN
PARSONAGE PARK
992 C. RB.
1732 01098754 26-11-04

COPPER-ALLOY
DRAWER PULL.
1660-1710
PARSONAGE PARK
992 A RB
1586 01098754 2-4-04

FLOWER-SHAPED
ESCUTCHEON
FOR A DROP HANDLE
LATE 17TH CENTURY
MARSHALL MEAD
1052 735F 13-9-99

PART OF DRAWER
HANDLE?
FERN PARK
98 LE 16-8-96

CLOTHES PEG
GEORGIAN/VICTORIAN
GILLBROOK ORCHARD
1463 A. ET.
2324.00848680.1-10-08

SILVER LEAF-SHAPED
MOUNT?
ELM FIELD
927 JG. E
1494 001877 9-12-03

CAST COPPER-ALLOY
BALL & CLAW FOOT.
FROM A VICTORIAN
ORNAMENT?
ELM FIELD
755 928 B 3-9-98

COPPER-ALLOY
TRIPID KNIFE-EN
STOP. POSSIBLY
TUDOR.
FIR FIELD
780 809A 21-9-99

SILVER-PLATED
COPPER-ALLOY
'FURNITURE' MOUNT
GILLBROOK ORCHARD
1199 1463B 12-6-00

PAN KNOB
PARSONAGE PARK
934 C. JS.
2334.01228780.19-10-08

COPPER-ALLOY
DRAWER HANDLE
ESCUTCHEON.
GEORGIAN/VICTORIAN
SEVEN ACRES
728 1102J 12-8-99

COPPER-ALLOY ROUND
FURNITURE MOUNT
WILL PARK
882 929B 28-12-98

PEWTER KNOB
C
PIT PARK
926 A RH.
1482 999877 21-10-03

SHEET METAL MOUNT
EMBOSSED WITH A
FLORAL PATTERN.
A BOX LID?
ELM FIELD
928 JG. C
1508 001877 13-12-03

PEWTER BUTTON
OR POT KNOB?
EVIDENCE OF BLACK
ENAMELLING.
HILL CLOSE
1454 1367E 6-9-03

DRAWER HANDLE
CRUDELY MADE
C
SEVEN ACRES
1427 1102E 23-6-03

DRAWER HANDLE
VICTORIAN-GEORGIAN
PATH BLACKLANDS
208 C 21-11-96

DRAWER
ESCUTCHEON
SPINDLE
C
WELL PARK
995A-PG.
1654 00838758 23-6-04

BRONZE CLAW-FOOT
ORNAMENT.
POSSIBLY FROM A PLANT
STAND. DATE UNKNOWN
THE PRIORY
272 L 29-1-97

COPPER-ALLOY DROP-HANDLE. GEORGIAN-VICTORIAN
ELM FIELD
601 928A 18.2.98

KEYHOLE COVER PLATE, VICTORIAN TO RECENT
FERN PARK
96 A 18.8.96

COPPER-ALLOY KEY ESCUTCHEON. PROBABLY GEORGIAN.
SEVEN ACRES
811 1102 S. 21.10.98

DROP HANDLE OR KEY-HOLE COVER EARLY 18th CENTURY
ELM FIELD
210 J 23.11.96

FURNITURE DROP HANDLE. 1680-1730
PARSONAGE PARK
934. B. JS. 18.8.09
2351-0122

COPPER-ALLOY DRAWER KNOB. GEORGIAN/VICTORIAN.
SEVEN ACRES
729 1102 M. 12.8.98

COPPER-ALLOY BALL & CLAW FOOT
WILL PARK
881 929 A 28.12.98

CABINET KNOB VICTORIAN?
FIR FIELD
484 809 B 23.9.97

COPPER-ALLOY KNOB OR WEIGHT? APPEARS TO HAVE BEEN FACETED. UNIDENTIFIABLE IN TEXTS AS A WEIGHT.
SANDY HILLS
465 1235.B 25.8.97

BOOK CLASP END? DOTTED PATTERN & BORDER
PARSONAGE PARK
992 C RB
1610 0109 8754 13.1.04

COPPER-ALLOY DRAWER KNOB. PROBABLY GEORGIAN.
SEVEN ACRES
1152 99

HARNESS OR DOOR STUD, BUT NO EVIDENCE OF RIVETING ON SHANK-UNUSED?
BRIDGE CLOSE
354 750 D 25.4.97

SMALL DRAWER-HANDLE ESCUTCHEON PROBABLY GEORGIAN.
HOME NURSERY
169 C 26.10.96

SMALL DRAWER HANDLE ESCUTCHEON. GEORGIAN-VICTORIAN
SEVEN ACRES
453 997 D 6.8.97

DRAWER HANDLE SPINDLE
HIGHER LAMB PARK
993 C. RB.
1783 0109 8754 12.3.05

COPPER-ALLOY ESCUTCHEON ON A SPINDLE. PROBABLY GEORGIAN.
SEVEN ACRES
718 1102 N. 7.8.98

DRAWER HANDLE SPINDLE PROBABLY GEORGIAN
QUARRY PARK
322 A 16.2.97

FLATTENED SILVER PIPE OR CANE FERRULE. BIRMINGHAM 1903. MAKER "HLE"
PIT PARK
1469 926 B 30.9.03

PEWTER 'DOG' JAR HANDLE?
HALF BRAKE
1288 457 E 5.9.01

BOOK CLASP
EIGHT ACRES
1891 1093 B 24.5.03

CAST COPPER-ALLOY CASKET LEG VICTORIAN?
HOME CLOSE
1087 B PG
1663 9990 8735 30.7.04

PART OF A DECORATIVE CHAIN VICTORIAN LAMP ASSEMBLY HANGER?
THREE ACRE FIELD
1332 753 A 18.6.02

WINDOW SCREW STAY
HIGHER LAMB PARK
993 D RB
1565 0109 8754 21.3.04

ENGRAVED SILVER BAND. FLAT WHEN FOUND. NO ASSAY MARK. POSSIBLY A PIPE FERRULE?
HIGHER SHEPHERD PARK
638 1000 C 14.6.98

SILVER PIPE STEM FERRULE. HALLMARKED BIRMINGHAM 1892 AND "J.H"
GLOBE FIELD
983 1101 F 23.5.97

SILVER WALKING-STICK FERRULE? HALLMARKED: LONDON 1910
PARSONAGE PARK
992 A. RB.
1693 0109 8754 4.10.04

LEAD 'JOCKEY'S HEAD' PENCIL DECORATION?
ELM FIELD
724 927 A. 11.8.98

SILVER FERRULE - FROM RIDING CROP? CRUSHED FLAT, SO ANNEALED & ROLLED OUT.
WILL PARK
337 H. 23.3.97

SILVER PIPE FERRULE. HALLMARKED: BIRMINGHAM 1896 MAKER: "L.B"
GILLBROOK MEADOW
1469 A. ET.
1678 0084 8680 11.9.04

DAGGER CHAPE? DATE UNKNOWN.
FOUR ACRES
166 J 25.10.96

SCABBARD CHAPE
ELM FIELD
927 JG.A
1506 001877 13.12.03

SHEET COPPER-ALLOY SCABBARD CHAPE? DATE UNKNOWN.
SEVEN ACRES
1272 1102 A 25.8.01

BRASS NAME PLATE ENGRAVED: "R.P. LILLYE TOPSHAM, BRIDAY"
TEN ACRES
729 B. JP.
1832. 9970 8816. 23.9.05

SILVER WALKING-STICK FERRULE. HALLMARKED: LONDON 1911. MAKER "J.W" [FLATTENED]
FOUR ACRES
282 H 3.2.97

QUILLIN DAG GUARD FRAG 14-16 C.
YONDER SOMME
455. A. DS.
2304. 9982 8877. 7.6.08

DECORATIVE DRAWER HANDLE VICTORIAN?
LOWER LAMB PARK
1107 RB.
1806 0109 8754 6.5.05

DRAWER ESCUTCHEON
SEVEN ACRES
485 B. JP.
1830. 9956 8872. 17.9.05

PLAIN, DOMED
MOUNT.
14°C?
HIGHER LAMB PARK
993 F. RB.
1770.01098754.7.3.05

RECTANGULAR
COPPER-ALLOY MOUNT
EVIDENCE OF GILDING
MEDIEVAL
PARSONAGE PARK
992 D. RB.
1807.01098754.6.5.05

SQUARE MOUNT
OR WAZHERED NAIL?
LITTLE TANK HILL
909. F. RH.
1902.98838778.13.12.05



EAGLE MOUNT.
FURNITURE MOUNT?
PENNY MEADOW ORCHARD
1030. F. RH.
1930.98838778.18.1.06



DRAWER HANDLE
ESCUTCHEON.
LATE 17th EVIDENCE
OF PITCH COATING. C
MIDDLE FIELD
908 A. RH.
1921.98838778.16.1.06



COPPER-ALLOY
DOMED MOUNT.
MIDDLE FIELD
999 A. PG.
1753.00518773.7.2.05



SUPPORTING LUG
OF A CABINET
HANDLE.
15-16th C.
BRANES CLOSE
910. D. RH.
1983.98838778.9.2.06



SILVER PIPE FERRULE
HALLMARKED:-
BIRMINGHAM 1899.
LITTLE TANK HILL
909. A. RH.
1974.98828778.8.2.06

TRIFOLIATE MOUNT
WOOL PARK
906. B. RH.
1898.98838778.12.12.05



MACHINERY OR
FURNITURE NAME
PLATE. STAMPED:
"J. WIPPELL & COY,
MANUFACTURERS, EXETER"
PARSONAGE PARK
992. E. RB.
2013.01098754.21.3.06

HINGE PART.
RING & DOT PATTERN
PARSONAGE PARK
992. D. RB.
1796.01098754.23.4.05



SILVER RIDING CROP
FERRULE?
GREAT BANEYS
832. C. RH.
2022.00258780.14.4.06



GEORGIAN COAT HOOK
SEVEN ACRES
1102. A. PG.
2033.00748743.18.4.04



BROKEN MOUNT?
GREAT BANEYS
832. B. RH.
1999.00258780.22.3.06



HEXAGONAL STUD
BLACK ENAMELLED?
TEN ACRES
729. A. JP
2305.99708816.22.6.08

BOOK CLASP WITH
FRAGMENT OF
LEATHER HINGE
17th C.
PARSONAGE PARK
992. A. RB.
2052.01098754.25.6



LEAD-FILLED COPPER
DOME-MOUNT.
HAMMERSON'S CLOSE
931. C. PC.
2064.00638789.24.8.06



DRAWER HANDLE
1690-1715
HIGHER FIELD
741. A. PG.
2036.00408814.13.5.06

COAT HOOK.
GEORGIAN/VICT.
WILL PARK
929. A. JS.
2041.00298762.22.5.06



TWISTED & FLUTED
WIRE DRAWER
HANDLE?
FOUR ACRES
1308. C. ET.
2093.00618709.3.10.06



MINIATURE DRAWER
PULL?
PARSONAGE PARK
992. B. RB.
2053.01098754.25.6.04



MINIATURE DRAWER
PULL?
PARSONAGE PARK
992. C. RB.
2054.01098754.25.6.06



SILVER STICK
FERRULE?
NO HALLMARK.
FOUR ACRES
1308. F. ET.
2096.00618709.3.10.06



NAME-BAR MOUNT
STAMPED: "B. MARKS,
WOODBURY"
FOUR ACRES
1308. B. ET.
2086.00618709.28.3.06



LARGE STUD FURNITURE
MOUNT?
SEVEN ACRES
997. A. PG.
2124.00658755.18.2.07



DRAWER HANDLE
ESCUTCHEON.
17th CENTURY.
SEVEN ACRES
1102. B. PG.
2131.00748743.21.3.07



MINIATURE DRAWER
PULL?
PARSONAGE PARK
992. E. RB.
2113.01098754.12.1.07



LOCK ESCUTCHEON
FOUR ACRES
1308. A. ET.
2101.00618709.9.10.06



DRAWER DROP HANDLE
GEORGIAN/VICTORIAN
GREAT CRAYTONS
355. B. TT.
2105.99718903.4.12.06

KNIFE END-TERMINAL

HIGHER LAMB PARK
993. B. RB.
2159.01098754.17.6.07



COAT HANGER
GEORGIAN/VICTORIAN
PARSONAGE PARK
934. A. JS.
2170.01228780.16.7.07



DRAWER HANDLE
ESCUTCHEON.
APPLETREE HILL
815. J. JP.
2240.99658790.24.10.07



LINKED FURNITURE
MOUNT?
HILL CLOSE
1006. A. JG.
2155.29948757.19.5.07



DRAWER ESCUTCHEON
18-19th C.
CROOKED MEADOW
1002. B. JG.
2255.99988756.27.11.07



DRAWER ESCUTCHEON
18th C.
SCORE PITCHERS
742. A. PG.
2270.00408814.5.3.08



DRAWER HANDLE
ESCUTCHEON
NEWTON'S FIELD
730. A. JP.
2272.99708816.11.3.08



SILVER STICK
TERMINAL?
HIGHER LAMB PARK
993. B. PG.
2280.01098754.27.3.08



COAT HOOK.
GEORGIAN?
HIGHER LAMB PARK
993. C. PG.
2281.01098754.27.3.08

Personal Mounts



COPPER-ALLOY P TRIANGULAR MOUNT. ROUGH CUT FROM SHEET PROBABLY A HOME-MADE HARNESS OR BELT MOUNT. QUARRY PARK 970 1003D 26.5.99



COPPER-ALLOY P TRIANGULAR BELT MOUNT. 17-18 C. RIBBED DESIGN. FOUR INTEGRAL LUGS. SEVEN ACRES 1103 1102 G 25.10.99



TRIANGULAR RIDGED MOUNT. MIDDLE FIELD 908.C. RH. 1899.98838778.13.12.05



BELT LOOP. EVIDENCE OF QILT. SCORE PITMERS 742. B. PG. 2374.00908814.20.2.10



ACORN MOUNT 16 C. GLOBE FIELD 1101 A PG. 1520 00538735 5.3.06



ACORN MOUNT POST-MEDIEVAL. PARSONAGE PARK 992 D RB 1592 01098754 5.4.07



BELT HANGER. ELM FIELD 927 J9. A 1487 001877 8.12.03



COPPER-ALLOY BELT HANGER. PATTERNED, & EVIDENCE OF TINNING. SEVEN ACRES 721 1102D 10.8.98



BELT HANGER. ELM FIELD 1320 928A 13.4.02



COPPER-ALLOY BELT MOUNT. 16-17 CENTURY. SEVEN ACRES 1261 1102 B 2.8.01



DECORATIVE COPPER-ALLOY MOUNT. UPR-SHAPED. POSSIBLY MEDIEVAL. FOUR ACRES 216 G 26.11.96



COPPER-ALLOY DOMED MOUNT. PENTER FILLED. TWO IRON MOUNTING LUGS. FURZE BUSHES 987 458 B 10.6.99



PEWTER MOUNT. HIGHER LAMB PARK 993 C. RB. 1727 01098754 23.11.09



BELT HANGER. SAWPIT FIELD 1009 A. RH. 1847.99908766.18.10.05



SQUARE COPPER-ALLOY MOUNT. PROBABLY A BELT DECORATION. TWO LUGS AT THE BARK. SEVEN ACRES 821 997F 4.11.98



COPPER-ALLOY STUD. MARSHALL MEADOW 735 D. PG. 1670 00908814 31.8.04



COPPER-ALLOY STUD MOUNT. TRACES OF QILT. 11-14 CENTURY? MIDDLE FIELD 999 B. PG. 1746 00518773 30.1.05



COPPER-ALLOY FURNITURE STUD. BONFIRE 539 1105D 20.12.97



COPPER-ALLOY MILITARY MOUNT? CAST. WITH NOS:- '19X', 'X61' OR 'X01'. EIGHT ACRES 1185 1093B 30.5.00



LOZENGE-SHAPED MOUNT. POST-MEDIEVAL. PARSONAGE PARK 992 B RB 1584 01098754 27.3.04



CAST COPPER CLOTHING MOUNT, WITH INTEGRAL LUGS. 17 TO 18 CENTURY. EVIDENCE OF TINNING. QUARRY PARK 318 D 13.2.97



STUD BELT MOUNT? ATTACHMENT TANG BROKEN OFF. APPLE TREE HILL 925 C. RH. 1858.99908766.23.10.05



PRESSED COPPER-ALLOY STUD MOUNT, WITH PIN. PROBABLY RECENT. WILL PARK 928 929E 26.3.99



COPPER-ALLOY DOMED MOUNT WITH INTEGRAL LUGS. 17 TO 18 CENTURY. SEVEN ACRES 920 1102B 15.3.99



MOUNT WITH CROSS PATTERN. MARSHALL MEADOW 735 E PG. 1669 00908814 31.8.04



COPPER-ALLOY MOUNT. RING & DOT PATTERN. 16-17 C. HILL CLOSE 76 C 24.6.96



BAR MOUNT. TUDOR? LOWER LAMB PARK 1107 E RB. 1559 01098754 19.3.04



FLAT MOUNT WITH TWO LUGS. 17 CENTURY. LOWER FIELD 930 B. PG. 1754 00518773 7.2.05



MEDIEVAL BAR-MOUNT 16-17 C. BONFIRE 1105 B. PG. 1658 00838758 14.7.04



ACORN MOUNT? BONFIRE 1105 B PG 1634 00658784 12.4.04



BROKEN BELT MOUNT. POST-MEDIEVAL. PARSONAGE PARK 992 B RB 1590 01098754 5.4.07



ROUGH-CAST COPPER-ALLOY RING. LARGER THAN USUAL. AT 32 MM DIAM: ELM FIELD 927 B. JG. 2044. 00148772.25.5.06



ROUGH-CAST COPPER-ALLOY RING. AT 30 MM. LARGER THAN USUAL. BRAKE CLOSE 910. C. RH. 1967.98838778.7.2.06



ROUGH-CAST COPPER-ALLOY RING. COMMON FINDS. POSSIBLY A BELT HANGER. LOWER LAMB PARK 1107 C RB. 1539 01098754 13.3.04



ROUGH-CAST COPPER-ALLOY RING. GILLBROOK ORCHARD 1210 1463 D 25.6.00



PIMPLE-PATTERNED COPPER-ALLOY MOUNT. 15-16 CENTURY? PARSONAGE PARK 992 E. RB. 1769 01098754 7.3.05

PLAIN, DOMED MOUNT. 14 C? PARSONAGE PARK 992 C. RB. 1771 01098754 7.3.05

PLAIN, DOMED MOUNT. 14 C? PARSONAGE PARK 992 H. RB. 1772 01098754 7.3.05



ROUGH-CAST COPPER-ALLOY RING. UNWORKED. EVIDENCE OF JOINTS TO OTHER RINGS. LITTE TANK HILL 909. C. RH. 1888.98838778.9.12.05



FLORET MOUNT. 16-17 CENTURY. NEWTON'S FIELD 730 A. J.P. 1831.99708816.23.9.05



LOZENGE-SHAPED STUD MOUNT. 17 C. TEN ACRES 729 D. JP 1837.99708816.26.9.05

THIN, RECTANGULAR COPPER-ALLOY MOUNT. TWO MOUNTING LUGS. WELL PARK 1091 995D 12.10.99

ROUND STUD MOUNT. 17 C. TEN ACRES 729 E. JP 1828.99708816.26.9.05

LOZENGE-SHAPED PRESSED COPPER-ALLOY BELT MOUNT. APPLE TREE HILL 925 D. RH. 1855.99908766.23.10.05



ROUGH-CAST COPPER-ALLOY RING. 29 MM. SMALLER THAN USUAL. EVIDENCE OF A JOINING FLANGE. MIDDLE FIELD 908. C. RH. 1995.98838778.19.3.06



OVOID MOUNT. SINGLE SPIGOT AT REAR. PARSONAGE PARK 992 @. RB. 2009.01098754.31.3.06

COPPER-ALLOY BELT MOUNT. BADLY BENT & CORRODED 17 C? MIDDLE FIELD 908. C. RH. 1989.98838778.9.3.06



FLORAL-SHAPED MOUNT.
TWO LUGS AT REAR.
16th CENTURY? P C
GREAT BANEYS
832-D. RH.
2023.00258780.14.4.06
UKSPD 12884

BROKEN MOUNT
17th CENTURY?
C
GREAT BANEYS
832-A. RH.
2020.00258780.14.4.06

STUD MOUNT?
SINGLE LUG AT BACK.
C
GREAT BANEYS
832-F. RH.
2025.00158780.14.4.06

TINNEY, COPPER-ALLOY MOUNT
PROBABLY 17th C.
P
ELM FIELD
1193 928D 9-6-00

COPPER-ALLOY CLOTHING HOOK.
16th CENTURY.
P
PARSONAGE PARK.
992-E. RB.
2004.01098754.28.3.06
UKSPD 12883

TOGGLE FASTENER
BROKEN MALE HALF
15-16th C P
PARSONAGE PARK
992-B. RB.
2001.01098754.28.3.06
UKSPD 12840



LOZENGE-SHAPED PRESSED COPPER-ALLOY MOUNT.
C
YONDER FIELD
805-B. PC.
2060.00638784.18-8-06

DOMED STUD-MOUNT OR FURNITURE STUD?
C
YONDER FIELD
805-D. PG.
2065.00638784.24-8-06

BELT MOUNT, WELL-TINNED.
16-17th C.
C
FOUR ACRES
1308-D. ET.
2094.00618709.3-10-06

TRIANGULAR MOUNT.
TUDOR. P
FOUR ACRES
1308-E. ET.
2071.00618709.14-9-06

MOUNT?
C
SEVEN ACRES
997-C. PG.
2127.00658755.7-3-07

COPPER-ALLOY SWORD-BELT FITTING, MALE PART.
C. 16th CENTURY.
P
PARSONAGE PARK
992-A. PG.
2284.01098754.31-3-08



COPPER-ALLOY MOUNT
16-17th C?
P
ELM FIELD
927-B. JG.
2168.00128772.11-7-07

CAST COPPER-ALLOY MOUNT. 17th C.
P
FLORAL PATTERN.
ONE LUG AT REAR. C
SEVEN ACRES
997-B. PG.
2209.00658755.28-9-07

DECORATED COPPER-ALLOY ROUND MOUNT.
C
MIDDLE FIELD
999-B. PG.
2250.00518773.29-10-07

COPPER-ALLOY MOUNT
17th C.
P C
TEN ACRES
466-B. JP.
2258.00678852.3-12-07

SILVER OR TIN-PLATED MOUNT
DATE UNKNOWN.
P
SCORE PITCHERS
742-E. PG.
2265.00488814.11-2-08

QUATREFOIL MOUNT
C. 17th CENTURY.
P
PARSONAGE PARK
992-C. PG.
2276.01098754.26-3-08
UKSPD 12712



FRAGMENT OF PATTERNED MOUNT?
C
SEVEN ACRES
1102-E. PG.
2134.00748743.21-3-07

CIRCULAR MOUNT
17th C.
P C
HILL CLOSE
982-A. PG.
2306.00638784.4-8-06
UKSPD 14548

BELT HOOK
C 1530-1570
P C
APPLEDORE HILL
816-A. JP.
2371.99658790.15-2-10
UKSPD 24503

MOUNT.
C
THORN PARK
1104-D. PG.
2401.00838758.7-11-10

"BOMBARDIER" FURNITURE FINIAL?
P
BUSHAYES/POSTLAKE
167 99108850 13-11-04

TRADE AND COIN WEIGHTS

Coin weights are usually made of brass or bronze and were used to check against the clipping or "sweating" of coins. Trade weights are usually stamped with an official mark or marks and are of brass, bronze or lead. Because lead was so easily worked and was readily available, many local tradesmen made their own crude weights which bore no such mark

Copper-alloy Trade Weights

 BRASS TRADE WEIGHT HALF OUNCE. STAMPED: CROWN OVER 'GR'. PROBABLY GEORGE III HIGHER FIELD (Q) 684 1100A 23.7.98 UKDFD. 16585	 BRASS TRADE WEIGHT 2 OZ. 1826-1879. P GUILD HALL SHIELD INDICATES CITY OF LONDON HANCES FIELD 1817 1106D 14.12.01 UKDFD. 16462	 BRASS HALF- POUND TRADE WEIGHT. NO MARKINGS SOUTH CLOSE 1290 357C 6.9.01 UKDFD. 16520	 BRASS TRADE WEIGHT STAMPED "2 OZ" & "EXON" VALIDATED AT EXETER. POST 1889. LOWER HAM 1022 1337I 26.7.99 UKDFD. 16520	 BRONZE 1 OUNCE GEORGIAN TRADE WEIGHT. STAMPED: CROWN OVER 'GR'. P SEVEN ACRES 1100 1102B 25.10.99 UKDFD. 16391
 COPPER-ALLOY TRADE WEIGHT. VICTORIAN. "1 OZ" OVER/STAMPED - REJECTED AS UNDERWT? HILL CLOSE 1234 1307 10.10.00 UKDFD. 16433	 BRASS TRADE WEIGHT STAMPED WITH INCOMPLETE CROWN OVER "GR". GEORGE III BRIDGE CLOSE 1040 750F 22.8.99 UKDFD. 16463	 BRONZE WEIGHT. STAMPED: CORONET? OVER "B.M." P FOUR ACRES 1443 1308B 27.8.03 UKDFD. 16404	 BRONZE 4-DRAM C APOTHECARY WEIGHT. STAMPED: "EXON 4 DRAM" 19 C. CERTIFIED IN EXETER. P HEATHFIELD 1113 2037 10.10.99 UKDFD. 16520	 BRONZE HALF-OUNCE TRADE WEIGHT. STAMPED WITH EWER MARK. P LOWER LAMB PARK 1107 D RB 1522 0109 8754 18.3.04 UKDFD. 16433
 COPPER-ALLOY ONE OUNCE TRADE WEIGHT STAMPED "1 OZ" ON TOP, & A CROWN OVER '83' ? ON BASE. VICT.-RECENT. WILL PARK 931 929 N 26.3.99 UKDFD. 16446	 BRONZE TRADE WEIGHT MARKINGS INDISTINCT SO NOT DATABLE, BUT PROBABLY GEORGIAN ELM FIELD 1897 G 12.1.96 UKDFD. 16497	 BRONZE TRADE WEIGHT PROBABLY WILLIAM IV 1830-37. NOTE THE EWER MARK. A 'COFFEE' -POT' WEIGHT ELM FIELD 15 C 11.6.94 UKDFD. 16497	 BRASS WEIGHT STAMPED WITH THREE CASTLES & 'EXON' VALIDATED AT EXETER C 1850 THORN PARK 505 1104H 27.10.97 UKDFD. 16519	 BRASS TRADE WEIGHT. NO MARKINGS VISIBLE C BONFIRE 1105 C PG. 1640 00668784 18.9.04 UKDFD. 16380
 COPPER-ALLOY TRADE WEIGHT. CHARLES I OR II 1625-1685 SCORE PITCHERS 742. A- PG. 2353.0040 8814. 28.8.09 UKDFD. 30523	 BRASS 1/4 OUNCE WEIGHT. PROBABLY 20 th CENTURY HIGHER HAM 284 C 7.2.97 UKDFD. 16597	 COPPER-ALLOY TRADE WEIGHT. LATE 14 th C TO EARLY 15 th C. STAMPED WITH INCISED PLANTAGENET CROWN. LAWN 506 1310 C 29.10.97 UKDFD. 16366	 CHARLES I OR II BRONZE TRADE WEIGHT 1625-1685 HIGHER SHEPHERD PARK 1388 1000D 23.5.03 UKDFD. 16411	 BRONZE ONE OUNCE TRAY CUP-WEIGHT. USES FOR BULLION. P GOLDEN LION STAMP ON INSIDE. PROBABLY 18- 19 CENTURY SEVEN 738 997A 22.8.98 UKDFD. 16478

Coin Weights.



GUINEA COIN WEIGHT
STAMPED "5 DW, 6 GR."
POST 1773. TO CHECK
COINS OF 126 GR. MIN
WEIGHT. FULL WT. 129 1/2
NEWTON'S FIELD
1479 730A 13.10.03
UKDFD. 166787



COIN WEIGHT?
NO OBVIOUS MARKINGS
PARSONAGE PARK
992B RB.
1743 01098754 7.1.05



JAMES I COIN WEIGHT
FOR A UNITE.
1612-1625
P C
SEVEN ACRES
997. A. PG.
2135.00658755.25.3.07
UKDFD. 16698



SQUARE COIN
WEIGHT MARKED
"10.6" ON BOTH SIDES.
HOME-MADE FOR 1/2 GUN?
SOUTH CLOSE
1417 357A 21.6.03



SQUARE COPPER-
ALLOY WEIGHT?
MARKED WITH BROAD
ARROW & CIRCLES? C
BRAKE'S CLOSE
910. B. RH.
1887.98838778.9.12.05



COIN WEIGHT?
NO MARKINGS.
PLTCH COVERED?
THREE CORNERS
1092 417B 23.8.99



COIN WEIGHT FOR
ONE GUINEA.
POST 1773. STAMPED
"5 & 8" (5 PUNTS, 8 BARS)
BRAKE'S CLOSE
910. B. RH.
1939.98838778.26.1.06
UKDFD. 16676



COIN WEIGHT FOR
A GOLD RYALL.
14-15 C.
SEVEN ACRES
1102. D. PG.
2128.00748748.7.3.07



CAST COPPER-ALLOY
WEIGHT FOR A
PORTUGUESE GOLD P
QUARTER MOIDORE.
1740-1770. MARKED "6.9"
- THE VALUE IN ENGLISH
SEVEN ACRES
824 997L 4.11.98
UKDFD. 16675



COIN WEIGHT FOR
A GOLD NOBLE.
1421-1471. P
INSCRIBED WITH A
CROWN OVER LIS
BRIDGE CLOSE
750. C. JD.
356.01498829.25.4.97

Lead Trade Weights.



LEAD WEIGHT
WITH IRON INFILL
MIDDLE FIELD
738A PG.
1823.00408814 11.8.05



TAPERED LEAD WEIGHT.
NO MARKINGS.
PROBABLY CAST IN A
BULLION CUP WEIGHT.
MIDDLE FIELD
908. A. RH.
1961.98838778.7.2.06



HALF-POUND LEAD
TRADE WEIGHT.
IMPRINTED. WELL-
PATINATED. PROBABLY
17-18 CENTURY.
HIGHER SHEPHERD PARK
639. 1000 E. 14.6.98



4oz LEAD WEIGHT
EVIDENCE OF A
SHIELD-SHAPED
AUTHENTICATION STAMP
BROAD RYSLON.
1050 1306A 12.9.99



LEAD STEEL-YARD
WEIGHT WITH
INTEGRAL LOOP
6 1/2 OUNCES
PARSONAGE PARK
992 C RB.
1544 01098754 15.3.09



LEAD TRADE WEIGHT
STAMPED: "NA"
& "D...N?"
4 OZ.
PARSONAGE PARK
1310 992A 29.10.01



LEAD WEIGHT
WITH TWO IMPRESSED
HEARTS & POSSIBLY
A PLUMBER'S MARK
FOUR ACRES
1169 1308W 13.5.00



OCTAGONAL LEAD
WEIGHT?
HANNERSONS CLOSE
1260 931 C 1.8.01



HOME-MADE LEAD
TRADE WEIGHT?
POSSIBLY MEDIEVAL
HILL CLOSE
100 G 9.10.96



CIRCULAR LEAD
WEIGHT.
WELL-PATINATED.
HIGHER LAMB PARK
993. D. PG.
2282.01098754.27.3.08

THIMBLES

Copper-alloy thimbles range from medieval times to the present, and they are fairly common finds in the fields. Presumably this is because when the women brought sustenance to their menfolk in the fields, they also brought their stitchery with them, losing thimbles as they did so. Many have inscriptions on them and some are of silver.



BEEHIVE THIMBLE
CAST BRONZE P
14th 15th CENTURY
PARSONAGE PARK
992 A RB
1608 01098754 13-4-04

UKDPD. 13554



COPPER-ALLOY THIMBLE.
SHEET METAL?
SPIRALLY PUNCHED 15th
16th CENTURY?
LOWER FIELD
930 B. PG.
1750 00518773 31-1-05

UKDPD. 13555



CAST COPPER-ALLOY THIMBLE. 16th CENTURY
HAND-PUNCHED P
INDENTATIONS C
STILE PARK
978 1493D 4-6-99



HAND-PUNCHED SHEET COPPER ALLOY THIMBLE.
CLEARLY 16th CENTURY.
P
ELM FIELD
927 JG. D
1498 001877 10-12-03

UKDPD. 13558



SILVER THIMBLE
STAMPED: "99"
EARLY 18th CENTURY P
HIGHER MEADOW
474A. MS.
1822 00538865 2-7-05

UKDPD. 13563



COPPER-ALLOY THIMBLE
15th-16th CENTURY P
MIDDLE FIELD
938 B. PG.
1824.00408814 11-8-05



COPPER-ALLOY THIMBLE
FLARED SKIRT
LOWER LAMB PARK
1107 D. RB.
1691 01098754 2-10-04



COPPER-ALLOY THIMBLE
SEVEN ACRES C
1274 997A 27-8-01



COPPER-ALLOY THIMBLE
HIGHER LAMB PARK
993 G. RB.
1587 01098754 10-3-04



COPPER-ALLOY THIMBLE.
PARSONAGE PARK
992 B. RB
1609 01098754 13-4-04



COPPER-ALLOY THIMBLE.
VICTORIAN TO RECENT.
SOWHILL MEADOW
1000 1086C 18-6-99



COPPER-ALLOY THIMBLE
FIR FIELD
880 809A 28-12-98



COPPER-ALLOY THIMBLE
LOWER LAMB PARK
1107 D. RB.
1530 01098754 9-3-04



COPPER-ALLOY THIMBLE
GREAT CRAYTONS
1289 355A 6-9-01



COPPER-ALLOY THIMBLE.
LONG FIVE ACRES
1044 23A 27-8-99



COPPER-ALLOY THIMBLE
EVIDENCE OF TUNNING ON TOP.
LOWER FIELD
418 1236 A 29-6-97



COPPER-ALLOY THIMBLE.
PROBABLY RECENT.
ELM FIELD
750 928C 31-8-98



COPPER-ALLOY THIMBLE.
SEVEN ACRES
946 997J 2-5-98



COPPER-ALLOY THIMBLE
PARSONAGE PARK
992 B. RB
1563 01098754 21-2-04



DAMAGED THIMBLE.
COPPER ALLOY. ONE-PIECE, NARROW BORDER & FLATTENED CROWN.
1700-1750 C
BRAKES CLOSE
126 M 28-9-96



COPPER-ALLOY THIMBLE.
PROBABLY GEORGIAN C
SEVEN ACRES
845 997F 9-11-98



COPPER-ALLOY THIMBLE.
PROBABLY 19th-20th CENTURY.
GILLBRIDG & ORCHARD
1206 1463A 15-6-00



COPPER-ALLOY THIMBLE
SEVEN ACRES C
1110 1102C 27-10-99



COPPER-ALLOY THIMBLE.
LONG FIELD
711 812C. 4-8-98



COPPER-ALLOY THIMBLE
PROBABLY 19th CENTURY
PARSONAGE PARK
913 934F 10-3-99

COPPER-ALLOY THIMBLE
PROBABLY 19th CENT.
FOUR ACRES
1140 1357A 5-3-00

COPPER-ALLOY THIMBLE
SEVEN ACRES
735 1102N 15-8-98

COPPER-ALLOY THIMBLE
LOWER FIELD
402 1236C 9-6-97

CHILD'S COPPER-ALLOY THIMBLE
ELM FIELD
602 927B 18-2-98

COPPER-ALLOY THIMBLE
NARROW BORDER & FLATTISH CROWN
1700-1750
PARSONAGE PARK
219 B 1-12-96

THIMBLE 1700-1750
ONE-PIECE, SHEET COPPER ALLOY. DATED BY ITS SHORTNESS, FLAT CROWN & MACHINED DIMPLES
FOUR ACRES
108 H 9-10-96

COPPER-ALLOY THIMBLE
FIR FIELD
785 809B 23-9-98

COPPER-ALLOY THIMBLE
LOWER FIELD
930A. PG
1762 0051 273 18-2-05

COPPER-ALLOY THIMBLE
YELLOWFORD
1221 81C 9-8-00

BROKEN THIMBLE
'FORGET ME NOT' ON RIM. PROBABLY LATE 19th C. COPPER ALLOY
FOUR ACRES
110 I 9-10-96

SMALL CAST COPPER-ALLOY THIMBLE
LONGFIELD
1222 80A 15-8-00

THIMBLE
STAINLESS STEEL?
EVIDENCE OF FIRE DAMAGE
SOUTH CLOSE
HIS 357A 19-6-03

FLAT-TOPPED THIMBLE
PARSONAGE PARK
992 F RB
1602 01098754 8-4-04

COPPER-ALLOY THIMBLE
LOWER FIELD
930A. PG
1762 0051 273 18-2-05

COPPER-ALLOY THIMBLE
YELLOWFORD
1221 81C 9-8-00

BROKEN THIMBLE
'FORGET ME NOT' ON RIM. PROBABLY LATE 19th C. COPPER ALLOY
FOUR ACRES
110 I 9-10-96

SMALL CAST COPPER-ALLOY THIMBLE
LONGFIELD
1222 80A 15-8-00

THIMBLE
STAINLESS STEEL?
EVIDENCE OF FIRE DAMAGE
SOUTH CLOSE
HIS 357A 19-6-03

FLAT-TOPPED THIMBLE
PARSONAGE PARK
992 F RB
1602 01098754 8-4-04

COPPER-ALLOY THIMBLE
HILL CLOSE
1490 1307A 19-8-03

COPPER-ALLOY THIMBLE
PARSONAGE PARK
992 B RB.
1627 01098754 26-4-04

SMALL COPPER-ALLOY THIMBLE
GREAT CRAYTONS
355ATT.
1648 99718903 11-6-04

COPPER-ALLOY THIMBLE
GREAT CRAYTONS
355BTT.
1644 99718903 10-6-04

THIMBLE
STAINLESS STEEL?
EVIDENCE OF FIRE DAMAGE
SOUTH CLOSE
HIS 357A 19-6-03

FLAT-TOPPED THIMBLE
PARSONAGE PARK
992 F RB
1602 01098754 8-4-04

COPPER-ALLOY THIMBLE
HILL CLOSE
1490 1307A 19-8-03

COPPER-ALLOY THIMBLE
PARSONAGE PARK
992 B RB.
1627 01098754 26-4-04

SMALL COPPER-ALLOY THIMBLE
GREAT CRAYTONS
355ATT.
1648 99718903 11-6-04

COPPER-ALLOY THIMBLE
GREAT CRAYTONS
355BTT.
1644 99718903 10-6-04

COPPER-ALLOY THIMBLE
UNUSUAL BANDED BASE
WELL PARK
995 B. PG.
1636 00658784 17-4-04

PART OF AN ENGRAVED SILVER THIMBLE.
FLATTENED WHEN FOUND - CUT IN HALF?
WINDMILL HILL
854 800E 20-11-98

THIMBLE TOP
LOWER LAMB PARK
1107 E RB
1606 01098754 9-4-04

TINY, COPPER-ALLOY THIMBLE
HIGHER LAMB PARK
993A. RB
1765 01098754 7-3-05

COPPER-ALLOY THIMBLE.
MODERN
LOWER FIELD
930 B PG.
1785 00518773 26-3-05

SEWING RING
HILL CLOSE
932 B. PG.
1789 00638784 2-4-05

COPPER-ALLOY THIMBLE
UNUSUAL BANDED BASE
WELL PARK
995 B. PG.
1636 00658784 17-4-04

PART OF AN ENGRAVED SILVER THIMBLE.
FLATTENED WHEN FOUND - CUT IN HALF?
WINDMILL HILL
854 800E 20-11-98

THIMBLE TOP
LOWER LAMB PARK
1107 E RB
1606 01098754 9-4-04

TINY, COPPER-ALLOY THIMBLE
HIGHER LAMB PARK
993A. RB
1765 01098754 7-3-05

COPPER-ALLOY THIMBLE.
MODERN
LOWER FIELD
930 B PG.
1785 00518773 26-3-05

SEWING RING
HILL CLOSE
932 B. PG.
1789 00638784 2-4-05

COPPER-ALLOY THIMBLE
HIGHER LAMB PARK
993 B. RB
1800 01098754 24-4-05

COPPER-ALLOY OPEN-TOPPED THIMBLE
PROBABLY 18-19 C.
NUTTS ORCHARD
525 376A 3-12-97

COPPER-ALLOY THIMBLE
LONG CLOSE
1208 463A 20-6-00

COPPER-ALLOY CHILD'S THIMBLE.
GREAT TANK HILL
1026. C. RH.
1869 .98838778. 19-11-05

COPPER-ALLOY THIMBLE.
PARSONAGE PARK
992. O. RB.
2011. 01098754. 31-3-06

SMALL COPPER-ALLOY THIMBLE.
MIDDLE FIELD
999. B. PG.
2179. 00518773. 10-8-07

COPPER-ALLOY THIMBLE
HIGHER LAMB PARK
993 B. RB
1800 01098754 24-4-05

COPPER-ALLOY OPEN-TOPPED THIMBLE
PROBABLY 18-19 C.
NUTTS ORCHARD
525 376A 3-12-97

COPPER-ALLOY THIMBLE
LONG CLOSE
1208 463A 20-6-00

COPPER-ALLOY CHILD'S THIMBLE.
GREAT TANK HILL
1026. C. RH.
1869 .98838778. 19-11-05

COPPER-ALLOY THIMBLE.
PARSONAGE PARK
992. O. RB.
2011. 01098754. 31-3-06

SMALL COPPER-ALLOY THIMBLE.
MIDDLE FIELD
999. B. PG.
2179. 00518773. 10-8-07

COPPER-ALLOY THIMBLE
GILLBROOK ORCHARD
1463. C. ET.
2199. 00848680. 3-9-07

TOYS

As today, children have always taken their toys outside to play with them, and finds range from the eighteenth century toy guns or petronels to the Dinky toys of our own generation.



CAST BRASS TOY CANNON
NEWTON'S FIELD
1377 730A 18.5.03



LEAD TOY CAT
SANDY HILLS
464 1235.A 25.8.97



BRASS TOY CANNON
19th CENTURY
LOWER LAMB PARK
1107 B RB
1556 01098754 19.3.04



BRASS TOY HORSE
BROAD MILL DOWN
1364 1703A 31.3.03



BROKEN TOY CANNON
STONEY LANE FIELD
1251 420 B 30.1.01



LEAD TOY TEAPOT
SEVEN ACRES
1374 1102A 7.5.03



PART OF A HIND LEG
OF A TOY LEAD HORSE?
LITTLE TURNPIKE FIELD
B17.C.3P.
2238.99658790.24.10.07



TOY CANNON
GEORGIAN-VICTORIAN.
ELM FIELD
1067 928B 28.9.99



LEAD TOY GOOSE
RECENT
GLOBE FIELD
636 1101A 30.5.98



PART OF A CAST
LEAD TOY?
SEVEN ACRES
726 1102A 12.8.98



LEAD TOY PIG
GLOBE FIELD
1075 1101A 4.10.99



DIE-CAST "JACKS"
COUNTER.
HILL CLOSE
1307 F. ET
1677 00618709 8.9.04



LEAD GAMING
COUNTER?
INSCRIBED WITH AN
'A' & RECTANGULAR PATTERN
HICHER LAMB PARK
993 C RB
1624 01098754 22.4.04



TOY CANNON
PROBABLY 19th C.
PIT PARK
926 A. RB.
1860.99908766.12.11.05



LEAD SOLDIER
PARIONAGE PARK
992 A RB
1598 01098754 8.4.04



LEAD SOLDIER
GLOBE FIELD
1101 B PG.
1520 00538738 2.1.04



LEAD SOLDIER.
GERMAN SOLDIER,
EARLY 20th CENTURY
APPLE TREE HILL
B1 I 31.8.96



DIE-CAST TOY FIG
BLAKE'S PLOT
1376 1798A 11.5.03



LEAD TOY DISH?
MIDDLE FIELD
999 C. PG.
2180.00618773.10.8.07

**DOMESTIC UTENSILS AND PERSONAL ITEMS OTHER THAN BUTTONS
& BUCKLES**

Cast bronze pot legs are probably the commonest of the items found. Many of these pieces are medieval in origin and the vessels were made right up to about 1750 when they were superseded by cast iron ones. Unfortunately, dating them precisely is practically impossible. Brooches are common on allotments and fairgrounds.

Pot Legs.



BRONZE RECEPTACLE
LEG. VERY FIRE-
BLACKENED. C
SY0093 8758
THORN PARK
204 C 18.11.96



CAST BRONZE POT
LEG. PRE 1750. C
METAL MUCH BLACKER
THAN USUAL. SY 0052
8738
GLOBE FIELD
460 13.8.97



LARGE BRONZE
POT LEG.
SY0062 8700
HIGHER HAM
581 1390B. 9.2.98



CAST BRONZE POT
LEG. MUCH FIRE-
BLACKENED.
PRE 1750. SY0061
8702
FOUR ACRES
659 1308G. 28.6.98



BRONZE POT LEG
HIGHER LAMB PARK
993 A. RB.
1737 01098754 4.12.04



BRONZE POT LEG
PRE 1750.
SY0014 8772
ELM FIELD
605 928 D 20.3.98



PART OF A CAST
LEAD VESSEL?
EVIDENCE OF BLACK-
ENING ON INSIDE.
WELL PATINATED C
SEVEN ACRES
439 997B 23.7.97



LEAD OR LEAD-ALLOY
POT LEG. PARTLY
FIRE-BLACKENED?!
SY0084 8680
GILLBROOK ORCHARD
1350 1463E 27.7.02



CAST RECEPTACLE
LEG. BROKEN OFF
PROBABLY THROUGH
CONSTANT HEATING
& COOLING. 13/17°C.
FIRST SUMMER HILL
106 456 A 10.10.96



CAST BRONZE
POT LEG.
SY0063 8960
UN-NAM
1224 83B 15.8.00



CAST RECEPTACLE
LEG. FAIRLY COMMON,
BUT NOT THE COMMON
PARTS. 13th TO 17th CENTURY
LOWER FIVE ACRES
10 B 2.8.96



SMALL CAST-BRONZE
POT LEG.
SY0150850
MEAD
769 667B 12.9.98



CAST RECEPTACLE
LEG. 13-17 CENTURY.
MUCH BLACKENED BY
FIRE. SY0061
8709
FOUR ACRES
157 J 21.10.96



CAST BRONZE POT
LEG.
SY0051 8773 C
MIDDLE FIELD
671 999F 7.7.98



BRONZE POT LEG
HIGHER LAMB PARK
993 G. RB.
1736 01098754 26.11.04



CAST BRONZE
POT LEG.
SY0065 8755 C
SEVEN ACRES
917 997F 13.3.99



CAST BRONZE
POT LEG.
SY0183 8782
COTT LET
1059 ? 14.9.99



CAST BRONZE
POT LEG.
SY0082 8758 C
QUARRY PARK
855 996B 19.11.98



CAST BRONZE
POT LEG.
SY0109 8764
LOWER LAMB PARK
1312 1107A 2.11.01



CAST BRONZE POT
LEG. DATE UNKNOWN
SY0034 8725
LOWER FIELD
378 1236 H 22.5.97



BRONZE POT LEG
HIGHER SHEPHERD PARK
1000 A. J9
1661 00909750 14.7.04



BRONZE POT LEG
SY0074 8743 C
SEVEN ACRES
1423 1102 D 23.6.03



CAST BRONZE
POT LEG
SY0170 8695 C
TWO ACRES
1141 1358B 5.3.00



CAST BRONZE POT
LEG.
SY0007 8894
ROUGH EARS
366 364A 8.5.97



933
CAST BRONZE POT LEG
SX 99658790 C
APPLEDORE HILL
933 816A 9-4-99



299
CAST BRONZE RECEPTACLE LEG.
SY 0083 8758 C
BONFIRE
299 H 22-2-97



250
CAST RECEPTACLE OR SKILLET LEG. P
NOTE THE RIBBING.
SY 0083 8758 C
BONFIRE
250 G 18-1-97



1579
BRONZE POT LEG
HIGHER LAMB PARK
993 A RB
1579 01098754 26-3-04



683
CAST BRONZE POT LEG.
SY 0043 8732
LOWER FIELD (P)
683 1236B, 21-7-98



897
CAST BRONZE POT LEG.
SY 0122 8780
PARSONAGE PARK
897 934D 29-1-99



654
SMALL CAST BRONZE POT LEG.
SY 0061 8709
FOUR ACRES
654 1308 I. 25-6-98



1340
CAST BRONZE POT LEG.
SY 0084 8680
GILLBROOK MEADOW
1340 1464C 20-7-02



298
CAST BRONZE RECEPTACLE LEG.
SMOOTH, INNER SURFACE OF POT AT TOP END. 0083 8758
THORN PARK
298 K 21-2-97



1306
BRONZE SKILLET OR POT HANDLE
SY 0084 8680
GILLBROOK MEADOW
1306 1464F 5-10-01



1719
BRONZE POT HANDLE
FIRE-BLACKENED
PARSONAGE PARK
992 B. RB.
1719 01098754 18-11-04



436
PART OF A CAST BRONZE POT HANDLE
PRE 1750.
SY 0074 8743 C
SEVEN ACRES
436 1102 B 22-7-97



268
HOLLOW BRONZE POT LEG? SLIGHTLY BLACKENED. UNKNOWN DATE 01098754
PARSONAGE PARK
268 D 24-1-97



1949
BRONZE POT LEG.
BRAKE'S CLOSE
910. D. RH.
1949. 98838778. 30-1-06



1788
SKILLET LEG
HILL CLOSE
932 A. PG.
1788 00638784 2-4-05



2006
CAST BRONZE POT LEG.
LOWER LAMB PARK
1107. G. RB.
2006. 01098754. 28-3-06



2037
FRAGMENT OF BRONZE POT LEG.
HIGHER FIELD
741. B. PG.
2037. 00408814. 13-5-06



2087
TINY BRONZE POT LEG.
FOUR ACRES
1308. C. ET.
2087. 00618709. 28-9-06



2166
BRONZE POT LEG.
WELL PARK
995. B. PG.
2166. 00838758. 29-6-07



2188
SMALL POT LEG
FOUR ACRES
1308. B. ET.
2188. 006891900. 30-8-07



2099
BRONZE POT LEG OR HANDLE.
FOUR ACRES
1308. C. ET.
2099. 00618709. 7-10-06



2236
VERY ERODED!
APPLETREE HILL
815. F. JP.
2236. 99658790. 24-10-07



2262
BRONZE POT LEG.
LOWER PITCHERS
807. B. PG.
2262. 00408814. 11-2-08



2429
CAST BRONZE POT LEG.
HOSPITAL
1522. E. RH
2429 2-11-15



2308
CAST BRONZE POT LEG
YONDER FIELD
805. A. PG.
2308. 00638784. 17-8-08



2309
CAST BRONZE POT LEG.
YONDER FIELD
805. B. PG.
2309. 00638784. 17-8-08



2398
BRONZE POT FRAGMENT.
THORN PARK
1104. A. PG.
2398. 00838758. 7-11-10



2354
BRONZE POT SHARD
HIGHER FIVE ACRES
1082. A. RP.
2354. 99348737. 16-9-09

Pot Shards.

51



BRONZE POT
FRAGMENT
PIT PARK
926 RH. A
1509 999 876 13-12-03



PART OF A BRONZE
COOKING POT. PRE-
1750. NOTE THE THREE
MOLDED LINES UNDER
THE RIM.
LOWER SHEPHERD'S PARK
416 1036 A 25-6-97



BRONZE POT PART.
TWO RIVETS WHERE
HANDLE ATTACHED?
SY0084 8680 P
GILLBROOK MEADOW
1347 1464 B 27-7-02



PART OF A
BRONZE COOKING
POT.
SY0089 8680
GILLBROOK ORCHARD
1309 1463 A 9-10-01



FRAGMENT OF
BRONZE SHEET.
POSSIBLY PART OF A
CAULDRON. AGE NOT
KNOWN.
DEEPWAY HILL FIELD
197 A 11-11-96



BRONZE POT RIM
SY0103 8749
HANCES FIELD
1315 1106 B 14-12-01



PART OF THE BASE
OF A BRONZE
RECEPTACLE?
DATE UNKNOWN
SY0074 8743 C
SEVEN ACRES
700 1102 A. 1-8-98



FRAGMENT OF
BRONZE POT BODY.
SY0074 8743 C
SEVEN ACRES
848 1102 B 10-11-98



BRONZE POT SHARD
BONFIRE
1105. D. PG.
2049.0083 8758.10-6-06



BRONZE POT SHARD
NOTE THE 'CHAPLET',
TOP RIGHT CORNER -
A SPACER TO KEEP THE
CLAY MOULDS APART.
THORN PARK
1104 A. PG.
1633 0065 8784 12-1-04



FRAGMENT OF
BRONZE POT
SY0061 8709
HILL CLOSE
1438 1307 A 18-8-03



FRAGMENT OF
BRONZE POT
SY0024 8733
LOWER SHEPHERD'S PARK
1407 1096 A 6-6-03



BRONZE PLATE
PROBABLY A FRAGMENT
OF COOKING POT.
DATE UNKNOWN.
GREAT MOT HILLS
373 1447 A 19-5-97



FRAGMENT OF
BRONZE POT
BONFIRE
1105. D. PG.
1660 0083 8758 14-7-04



FRAGMENT OF
BRONZE POT RIM
STRANGE 'CHEW'
MARKS ON IT.
HIGHER LAMB PARK
993 K. RB.
1814 0109 8754 6-5-05



BRONZE POT SHARD
FOUR ACRES
1308. D. ET.
2100.0041 8709.7-10-06



BRONZE POT SHARD
HIGHER BROAD MOOR
907. A. CB.
1936. 9865 8771. 22-1-06



BRONZE POT
FRAGMENT
SEVEN ACRES
1102 C. P. G.
1512 0078 874 17-12-03



FRAGMENT OF BRONZE
COOKING POT. PRE-
1750.
SY0082 8716
LAWN
507 1310 E 23-10-97



FRAGMENT OF
BRONZE POT LEG
HIGHER LAMB PARK
993. B. RB.
2110. 0109 8754. 12-1-07



FRAGMENT OF
BRONZE POT.
LOWER FIELD
930. D. PG.
2181. 0051 8773. 10-8-07



BRONZE POT
FRAGMENT.
LOWER FIELD
930. E. PG.
2230. 0051 8773. 19-10-07



BRONZE POT SHARD
HIGHER BROAD MOOR
907. A. (CB).
1993. 9865 8771. 11-3-06



SPOON HANDLE?
BALUSTER KNOP
LATE 16th TO 17th C
BRAKES CLOSE
910. K. RH.
1935. 9803 8778. 18-1-06



SILVER TRIFOLD SPOON
HANDLE. STAMPED ID
& HAND PUNCHED "ID"
& "RT" 1795th P C
GREAT TANK HILL
1026. H. RH.
1932. 9883 8778. 18-1-06



PEWTER RAT-TAILED
SPOON BOWL. EARLY
18th CENTURY.
CHARACTERISED BY
SHALLOW BOWL
GILLBROOK MEADOW
84 J 25-7-96



TIN-PLATED, LATTEN^{*}
SPOON BOWL. MAKER'S
MARK IN BOWL. 17" TO
EARLY 18th CENTURY.
*: COPPER & ZINC ALLOY.
LOWER HAM
616 1397 A 31-3-98



PEWTER SPOON BOWL
CAST DECORATION
AT STEM END
18th CENTURY.
GILLBROOK ORCHARD
1202 1463 A 14-6-00



PEWTER SPOON BOWL
18th CENTURY.
SEVEN ACRES
698 1102 C. 30-7-98



PEWTER SPOON
BOWL.
GREAT TANK HILL
1473 1026 A 2-10-03

COPPER-ALLOY SPOON BOWL.
WINDMILL HILL
892 800E 24-1-99

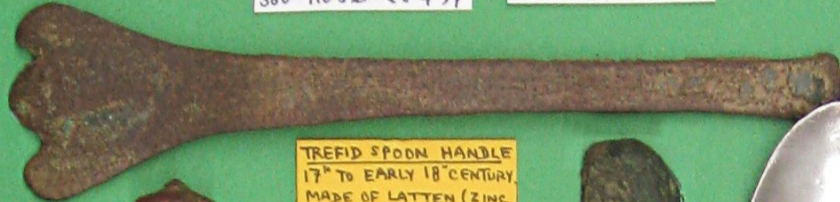
NARROW COPPER ALLOY SPOON BOWL.
BONFIRE
360 1105B 28-4-97

COPPER-ALLOY SPOON BOWL. POSSIBLY GEORGIAN.
LOWER HAM
582 1397G 9-2-98

PEWTER SPOON BOWL
BRACKET CLOSE
910.B. RM.
1943.9883.8778.29-1-06

TREFID SPOON HANDLE. USED AS A CLOTHING HOOK?
SEVEN ACRES
1324 1102B 29-4-02

COPPER-ALLOY TREFID SPOON END
PARSONAGE PARK
992 A RB
1626 01098754 26-4-01



TREFID SPOON HANDLE 17" TO EARLY 18" CENTURY. MADE OF LATTEN (ZINC & COPPER ALLOY). EVIDENCE OF TIN PLATING.
BONFIRE
292 E 16-2-97



SPOON HANDLE. COPPER ALLOY. POSSIBLY VICTORIAN.
LOWER FIELD
138 J 16-9-96



COPPER-ALLOY SPOON-KNOP?
ELM FIELD
399 928F 3-6-97



COPPER ALLOY SPOON KNOB?
BONFIRE
530 1105C 11-12-97



HEAD OF A ROMAN FIBULAR BRUSH OF 'TRUMPET' TYPE. 1" TO 2" CENTURY AD. POSSIBLY PANNONIAN.
THORN PARK
535 1104A 19-12-97



SILVER SPOON BOWL.
HIGHER FOUR ACRES
921.A. RP.
2329.9965.8773.K-10-08



FIGURED END OF A PEWTER LADLE HANDLE?
LOWER LAND PARK
1107A. RB.
1708 01098754 20-10-04



COPPER-ALLOY CADDY SPOON. ALMOST CERTAINLY MADE BY A BOY AT EXMOUTH SCHOOL, MID 1950'S
FOUR ACRES
878 1308G 19-12-98

HANDLE OF LATTEN SEAL-HEADED SPOON. 15"-17" CENTURY.
SEVEN ACRES
30 1102B 29-7-98



POT KNOB. MUCH FIRE-BLACKENED.
BONFIRE
293 F 20-2-97



COPPER-ALLOY POT KNOB. FIRE-BLACKENED.
SEVEN ACRES
829 997N 6-11-98



LEAD TOBACCO JAR KNOB
18" CENTURY
COTTLES
1055 ? 14-9-99



COPPER-ALLOY POT KNOB. TOBACCO JAR KNOB?
WEATHER LAND
1214 350A 3-7-00



PEWTER TOBACCO JAR KNOB
18" CENTURY
LITTLE SOWHILL
975 1090E 31-5-99



POT KNOB FIRE-BLACKENED.
QUARRY PARK
61 D 21-1-97



COPPER-ALLOY POT KNOB.
PARSONAGE PARK
904 934I 30-1-99



POT KNOB. SOME EVIDENCE OF FIRE BLACKENING.
THORN PARK
295 G 21-2-97



PIPE TAMPER? OR PART OF A SEAL-HEADED SPOON HANDLE?
SEVEN ACRES
1325 1102C 24-4-02



SPOON KNOB
17" C.
FOUR ACRES
1308.F. ET.
2072.00618709.14-9-06

PART OF A PAIR OF DIVIDERS OR COMPASSES. PROBABLY RECENT
MIDDLE FIELD
379 999D 22-5-97



52



PART HANDLE OF A SEAL-HEADED SPOON? OR PIPE TAMPER?
SEVEN ACRES
437 1102E 23-7-97



COPPER-ALLOY POKER KNOB?
SEVILLE MOOR
1074 1241G 2-10-99



PART HANDLE OF A CANDLE SNUFFER SILVER OR TIN PLATED
18"-19" CENTURY
HEATHFIELD
1116 2037 21-11-01

SILVER-PLATED CANDLE SNUFFER TOP.
SEVEN ACRES
1149 997A 10-4-00



BROKEN CAST COPPER-ALLOY CANDLE STICK? WELL-PATINATED. POSSIBLY MEDIEVAL.
SEVEN ACRES
937 1102A 22-4-99



COPPER-ALLOY POKER HANDLE?
FERN PARK
964 B18A 21-5-99



DOG WHISTLE
YONDER FIELD
1266 805E 5-8-01

PEWTER 'TULIP HEAD' CANDLE HOLDER? DATE UNKNOWN.
FERN PARK
909 B18C 27-2-99