



SIDE OF A COPPER-ALLOY VESPA BOX.
LAWN
S11 1310C 31-10-97



COPPER-ALLOY CUP.
EVIDENCE OF TANNING.
NOTE THE RIM LINE.
DATE & USE UNKNOWN,
BUT PROBABLY GEOR/VICT.
GREEN ACRES
817. 10.98



WORN HEEL PLATE
OF CHILD'S OR LADY'S
SHOE. PROBABLY
VICTORIAN.
SEVEN ACRES
112 M 13-10-96



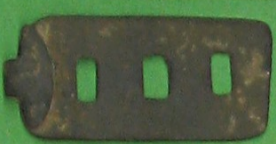
CAST COPPER-ALLOY
INK-POT LID?
HINGE PIN AT REAR
SOUTH CLOSE
1291 357D 6-9-01



BROKEN DIVIDERS
HIGHER SHEPHEAD PARK
1083 1000B 8-10-97



COPPER-ALLOY
CLOG CLASP.
FOUR ACRES
1168 1308V 18-5-00



SHOE OR CLOG CLASP
APPLE TREE HILL
1474 925A 9-10-03



CLOG OR SHOE
CLASP
HIGHER LAMB PARK
993 A RB
1597 01098754 17-3-04



SHOE OR CLOG
CLASP.
HIGHER LAMB PARK
993 B. RB
1766 01098754 7-3-05



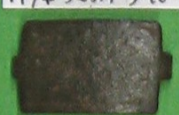
CLOG OR SHOE
CLASP
19th CENTURY
BRIDGE CLOSE
1066 750G 22-9-99



COPPER-ALLOY SHOE
OR CLOG CLASP.
USED WITH ITS CLASP,
AS A BUCKLE. (B TO C)
PARSONAGE PARK
912 934A 10-3-99



SHOE OR CLOG
CLASP.
BRAKES CLOSE
1069 910Q 28-9-96



CLOG OR SHOE
CLASP.
LONGFIELD
1426 80A 30-6-03



CLOG OR SHOE CLASP
HIGHER LAMB PARK
993 B. RB
1791 01098754 19-4-05



CLOG OR SHOE CLASP
BRAKES CLOSE
910. D. RH.
1964.9883 8778. 7-2-06



CLOG OR SHOE
CLASP.
GREAT TANK HILL
1026. C. RH.
1911.9883 8778. 23-12-05



COPPER-ALLOY
CLOTHING HOOK?
SEVEN ACRES
720 1102J 7-8-98



BROKEN COPPER-ALLOY
CLOTHING HOOK.
LATE 17th CENTURY.
STAMPED WITH A
FLORAL PATTERN.
SEVEN ACRES
847 1102A 10-11-98



CLOTHING HOOK
(BROKEN)
17th CENTURY
LOAM PARK
464 A. JP.
1829.99568872.17-9-05



STAY BUCK.
19th-20th CENTURY.
USED TO SECURE
STEEL STAYS ON
CORSETS.
QUARRY PARK
688 996F 19-10-97



SHOE OR CLOG CLASP.
SEVEN ACRES
997. D. PG.
2151.00558755. 14-5-07



CLOG OR SHOE
CLASP.
GEORGIAN/VICTORIAN
FOUR ACRES
1308. B. ET.
2077.00618709.18-9-06



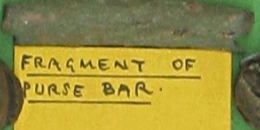
CLOG CLASP
THORN PARK
1104. A. PG.
2046.00838758. 10-6-98



PURSE FRAME PART,
WITH ENGRAVED
OBLIQUE LINE PATTERN
POSSIBLY 16th CENTURY
FOUR ACRES
231 B 8-12-96



FRAGMENT OF PURSE
FRAME. 16th CENTURY.
LATTICE-WORK
PATTERN.
PARSONAGE PARK
992. F. RB.
2014.01098754. 31-3-06



FRAGMENT OF
PURSE BAR.
PARSONAGE PARK
992. A. RB.
2108.01098754. 5-1-07



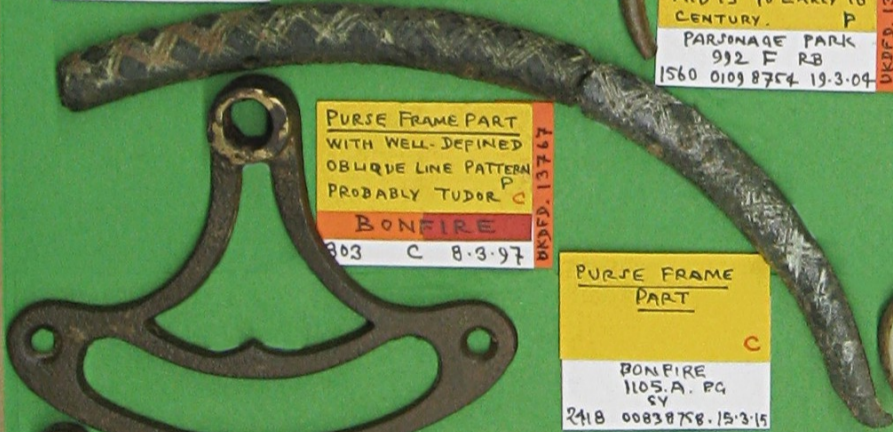
PURSE BAR TERMINAL
TUDOR?
MID 15th TO EARLY 16th
CENTURY.
PARSONAGE PARK
992 F RB
1560 01098754 19-3-04



PURSE-BAR
TERMINAL.
16th C.
PARSONAGE PARK
992 E RB
1601 01098754 8-9-04



PURSE BAR FRAGMENT
C. 1450-1500
ENGRAVED "EM" x "N"
FOUR ACRES
1308. F. ET.
2321.00618709.26-9-08



PURSE FRAME PART
WITH WELL-DEFINED
OBLIQUE LINE PATTERN
PROBABLY TUDOR.
BONFIRE
803 C 8-3-97



PURSE FRAME
PART
BONFIRE
1105. A. PG.
SY
2418 00838758. 15-3-15



SILVER PROPPELLING
PENCIL BARREL.
HALLMARKED: LONDON
1934. INSC: 'MORDAN
EVERPOINT L^{td} SM & CO'
GLOBE FIELD
1186 1234A 3-6-00



SEAL HANDLE?
GREAT TANK HILL
1026. I. RH:
1933.98838778.18-1-06



COPPER-ALLOY
HOUSE BELL
CRANK
GILLBROOK ORCHARD
1207 1463C 15-6-00



PORCELAIN BELL-
PULL KNOB?
HIGHER LAMB PARK
993 A RB
1597 01098754 6-4-04



BELL KNOB?
GREAT CONIGAR
1123 2011H 18-1-00



STAIR-ROD CLIP
HILL CLOSE
1460 1307D 27-9-03



CUP HOOK
WOOL PARK
906. B. RH.
1926.98838778.18-1-06



CUP HOOK - SMALL
WOOL PARK
906. C. RH.
1927.98838778.18-1-06



BRASS STAIR-ROD
OR WIRE CLIP
NEWTON'S FIELD
1480 730B 13-10-03



PROBABLY PART OF
A "BUNSEN"-TYPE
CANDLESTICK. 15C.
SEVEN ACRES
945 997E 2-5-99

955

PROBABLY PART OF A "BUNSEN"-TYPE CANDLESTICK. 15C.

PARSONAGE PARK 955 934A 14-5-99

FRAGMENT OF A "BUNSEN"-TYPE CANDLESTICK

FOUR ACRES 1308. C. ET. 2189. 06618709. 30-8-07

COPPER-ALLOY JAWS HARP. P IRON SPRING STRIP MISSING. 18th CENTURY

SEVEN ACRES 839 997H 7-11-98

JEWEL HARP GEORGIAN/VICTORIAN

FIVE ACRES 733 A. NS. 1408 00998806 76-02



LEADEN POT KNOB. VICTORIAN/GEORGIAN

GREAT TANK HILL 1026. H. RH. 1874. 9083 8778. 19-11-05



CHAFING-DISH HANDLE

THORN PARK 1104. E. PG. 2390. 00888758. 27-4-10



COPPER-ALLOY DRAWER HANDLE

GEORGIAN-VICTORIAN (OR BOX HANDLE) C SEVEN ACRES 837 997B 7-11-98



PAstry JIGGER WHEEL?

HILL PARK 41 A 5-96



PAstry CUTTER HANDLE?

QUARRY PARK 996. A. PG. 2423. 00888758. 30-3-15

54

Jewellery.



WOMENS LAND ARMY BADGE

QUARRY PARK 996. B. PG. 2424. 00888758 30-3-15



SOLITAIRE, WITH JET FACING. 18 TO 19th C.

PARSONAGE PARK 992 D. RB. 1779 0109 8754 10-3-05



SILVER BROOCH ENGRAVED WITH FLOWER MOTIF. NO AWDAY. PROB: VICTORIAN.

LONG FIELD 1254 495C 31-1-01



COPPER ALLOY BROOCH-PENDANT. PROBABLY VICTORIAN

SEVEN ACRES 695 1102. L. 29-7-98



PRESSED & PIERCED COPPER-ALLOY BROOCH? FLORAL PATTERN. BLACK ENAMELLED; STRAP ON BACK.

HILL CLOSE 1277 1307B 29-8-01



COPPER-ALLOY VICTORIAN BROOCH

TEN ACRES 979 565A 6-6-99



COPPER-ALLOY BROOCH? PROBABLY RECENT.

NUTS ORCHARD 411 376 C 21-6-97



PRESSED COPPER-ALLOY BROOCH FRAME VICTORIAN.

HEATHFIELD 3 ACRES 1285 318D 4-9-01



BROKEN COPPER-ALLOY "BUTTERFLY" BROOCH. PROBABLY VICTORIAN

MARSH PARK 798 1273E 12-10-98

'TRUMPET-PATTERNED' BROOCH

ELM FIELD 928 54. D 1493 001877 9-12-03



COPPER-ALLOY HORSE SHOE CHARM

GILLBROOK MEADOW 1341 1464D 20-7-02



LOCKET CASE COPPER ALLOY. VICTORIAN TO RECENT

THE PRIORY 273 E 1-2-97



SHIP'S WHEEL BROOCH

BONFIRE 1105 C. PG. 1659 00838758 14-7-04



COPPER ALLOY BROOCH, OR BOX LID.

LONG FIELD 705 812 G. 3-8-98



GOLDEN SHRED "KENT" GOLLIWOGS BADGE.

NEWTON'S FIELD 1359 730A 21-8-02



VICTORIAN G.P.O LABEL BADGE

GILLBROOK MEADOW 962 1464D 20-5-99



COPPER-ALLOY LOCKET.

PARSONAGE PARK 992 B. RB. 1694 0109 8754 4-10-04



MODERN BROOCH TRACES OF GILT

HIGHER LAMB PARK 993 C RB 1548 0109 8754 17-3-04



COPPER-ALLOY FOB CHAIN.
C.1790
MARSH PARK
799 1273D 12-10-98

FRAGMENT OF 'INSERT' BROOCH
VICTORIAN?
HIGHER LAMB PARK
993 L. RB.
1815 01098754 6-5-05

FLORAL-PATTERNED BROOCH CENTRE.
MODERN.
PARSONAGE PARK
992 A. RB.
1562 01098754 21-3-09

PART OF A FAN BROOCH.
MODERN
HIGHER LAMB PARK
993 F. RB
1577 01098754 24-3-04

BROOCH BACK
BRACKET CLOSE
910.A. RH.
1942.98838778.291-06

GLASS 'STONE' IN METAL SETTING
MODERN
HIGHER LAMB PARK
993 C. RB.
1792 01098754 19-4-05

'S'-SHAPED BROOCH
MARKED: 'BLOOD & FIRE'
LOWER LAMB PARK
1107 A. RB
1555 01098754 19-3-04



FOB SEAL INTAGLIO
IMAGE OF A ROMAN CENTURION.
VICTORIAN TO RECENT.
LONG CLOSE
1367 1707A 12-4-03

BROOCH BACK
SEVEN ACRES
1102 B. PG
154 007874 17-12-03

SHIELD BADGE OF LEAD ALLOY. ALMOST CERTAINLY MODERN.
FOUR ACRES
83 M 23-7-94

CUFF LINK.
EVIDENCE OF GILDING.
MODERN.
GILLBROOK ORCHARD
1463. C. ET.
2326.00848680.1-10-08

SHIELD-SHAPED RELIGIOUS 'LOVE' TALISMAN
PARSONAGE PARK
992 B. RB.
1573 01098754 15-3-04



RUPERT BEAR BADGE.
ENSCR: 'DAILY EXPRESS RUPERT LEAGUE'
THORN PARK
1362 1104E 7-10-02

CHARM BRACELET PADLOCK.
GILLBROOK ORCHARD
1339 1463B 20-7-02

ONE HALF OF A SILVER CUFF-LINK.
18C.
MOTIF: CORONET OVER CLAPPED HANDS & HEARTS
ELM FIELD
928. C. JG.
2154.00128772.17-5-07

SILVER GEORGIAN CUFF-LINK HALF
SCORE PITCHERS
742. A. PG.
2269.00908814.20-2-08

COPPER-ALLOY CUFF-LINK.
CENTRAL STAR PATTERN. GEORGIAN.
PARSONAGE PARK
934. G. JS.
2338.01228760.19-10-08

EAR RING OR CLASP
POSSIBLY AN EAR RING, BUT CLIP AT BACK TOO NARROW. DATE UNKNOWN
QUARRY PARK
317 C 12-3-97

HALF A SILVER-PLATED CUFF LINK
SIMPLE FLORAL PATTERN. GEORGIAN?
HIGHER LAMB PARK
993 A. RB.
1717 01098754 11-11-04

CUFF-LINK (18)
COPPER-ALLOY
ELM FIELD
25 D 12-6-96

SILVER CUFF-LINK
THORN PARK
924 B. RH.
1848.99908766.18-10-05

SILVER CUFF-LINK.
POSSIBLY GEORGIAN
HIGHER LAMB PARK
993 A. RB
1804 01098754 6-5-05

ENAMELLED CUFF LINK. DATE UNKNOWN
STAMPED ON BACK WITH CROWN & FISH:
MIDDLE FIELD
26 A 22-7-96

COPPER-ALLOY CUFF-LINK HALF.
GEORGIAN-VICTORIAN
THORN PARK
600 1104K.18-2-98

PEASANT FINGER RING
COPPER ALLOY WITH GILT TRACES & ENGRAVING.
A POOR PERSON'S WEDDING RING
HIGHER SHELVES
78 N 22-9-96

COPPER-ALLOY FINGER RING.
A 'PEASANT' RING.
DATE UNKNOWN.
FOUR ACRES
676 1308 I 10-7-98

COPPER-ALLOY CHILD'S OR BIRD'S RING.
SPLIT RING IMPRESSED '1910'
GILLBROOK ORCHARD
1305 1463E 5-10-01

PEASANT RING -OR XMAS CRACKER RING?
SOME GILDING.
GILLBROOK ORCHARD
1463 C. ET.
1682 00848680 24-9-04

CHILD'S XMAS CRACKER RING?
HIGHER HAM
1390. A. PG.
1859.00628790.9-11-05

COPPER-ALLOY CUFF-LINK.
APPLETREE HILL
815. B. JT.
2248.99658790.29-10-05

PRESSED COPPER-ALLOY CROSS.
A BROOCH PART?
HIGHER LAMB PARK
993. L. RB
2608.01098754.28-3-06

FRAGMENT OF SILVER BROOCH?
PARSONAGE PARK
992. F. RB.
2005.01098754.28-3-06

GIRL GUIDES BADGE
FOUR ACRES
1308. A. ET.
2091.00618769.3-10-06

COPPER-ALLOY BROOCH BEZEL?
MIDDLE FIELD
667 999A 7-7-98

COPPER-ALLOY CUFF-LINK OR HARNESS MOUNT?
HIGHER LAMB PARK
993. A. RB.
2055.01098754.27-6-06

GEORGIAN-VICTORIAN BROOCH?
SEVEN ACRES
997. B. PG.
2119.00658755.14-2-07

GOLD VESPA BOX LID?
LOWER FIELD
930. D. PG.
2177.00518773.30-7-07

SEAL MATRIX?
DOVE MOTIF.
GILLBROOK ORCHARD
1463. B. ET.
2198.00848680.3-9-07

BLACKSMITH MOTIF LABEL BADGE?
PART PLASTIC. MODERN.
GILLBROOK ORCHARD
1463. E. ET.
2201.00848680.3-9-07

COPPER-ALLOY LIGHT JEWELRY CHAIN.
GREAT TANK HILL
1026. E. RP.
2207.98838778.10-9-07

PART OF A LOCKET FRAME.
PROBABLY VICTORIAN.
LONG FIELD
710 812A. 4-8-98

COPPER-ALLOY WIRE EAR RING?
TRACES OF GILT
GLOBE FIELD
1231 1101B 21-8-00

VICTORIAN COMMEMORATIVE MEDALLION-DIAMOND JUDILEE 1837-1897.
SCORE PITCHERS
742. B. PG.
2294.00908814.21-4-08

GERMAN DIE-CAST BADGE.
FOUR ACRES
1308. H. ET.
2323.00618769.26-9-08

COPPER-ALLOY BROOCH STONES MISSING.
WELL PARK
995. D. PG.
2368.00838758.20-11-09

WESTON-SUPER-MARE LABEL BADGE.
HIGHER FIELD (Q)
687 1100 A 24-7-98

KEYS

Watch and barrel keys are always desirable finds. When workers were in the fields, the foreman held the key to the cider barrel tap to ensure that his companions did not imbibe too frequently. The keys were sometimes damaged and they were often lost in the grass and stubble. They began to be popular in the early part of the eighteenth century, and continued in use well into the late nineteenth century.



BARREL TAP KEY
PROBABLY 19th CENTURY

CROFT.

415 603 A 23-6-97



BARREL TAP KEY
WITH FLUTED
TRIANGULAR SECTION.

BRIDGE CLOSE

855 750 D 25-4-97



BROKEN BARREL TAP
KEY. KEVED TAP
BECAME POPULAR IN THE
EARLY 1700'S & CONTIN-
UED IN USE TILL LATE 1800's

SEVEN ACRES

113 L 13-10-96



BARREL-TAP KEY.

ELM FIELD

791 928 A 25-8-98



COPPER-ALLOY
BARREL TAP KEY.
PROBABLY 19th CENTURY

SEVEN ACRES

691 1102 D 29-7-98



BARREL TAP KEY

PARSONAGE PARK
895 939 A 26-1-99



CLOCK KEY
REDDENED, EVIDENCE
OF FIRE. PROBABLY
MODERN.

DON FIRE

150 B 19-10-96



DRAWER KEY

DATE UNKNOWN

CRISTON STILE FIELD

1371 814 19-4-05



MACHINERY KEY?
VICTORIAN TO
RECENT.

BRIDGE CLOSE

1039 750 A 22-8-99



BARREL-TAP
KEY.

CROSS PARK

1047 727 C 6-9-99



BARREL-TAP
KEY

GLOBE FIELD
1101 B PG.

1523 00538738 17-1-09



BROKEN COPPER-ALLOY
KEY.

GILCROOK

392 1469 F 27-5-97



COPPER-ALLOY
CLOCK KEY

HEADLAND

1283 790 A 29-8-00



BARREL TAP
KEY

STILE PARK
1474 B-RH.

2938 0458475 2-11-05

56

Watch Keys.



WATCH KEY.
GEORGIAN

TEN ACRES
729 C JP.

1835 99708816 26-9-05



HANDLE OF A
WATCH KEY- GILDES

SEVEN ACRES
1102 A. PG.

1816 0074 8743 8-5-05



COPPER-ALLOY
WATCH WINDER
19th CENTURY.

SEVEN ACRES

725 1102 E 12-8-98



MULTI-SPIGOT
WATCH KEY.

GLOBE FIELD

1226 1101 C 18-8-00



POCKET WATCH
WINDER.

TRACES OF GILT.
GEORGIAN/VICTORIAN

PIT PARK

1089 926 B 12-10-99



WATCH KEY

SEVEN ACRES
1102 A. PG.

1656 0074 8743 29-8-04



PART OF A POCKET
WATCH KEY.

LITTLE FIVE ACRES

335 B. 23-3-97



SMALL BROKEN KEY.
POSSIBLY PART OF A
POCKET WATCH KEY.

BRACKES CLOSE

129 F 28-9-96



COPPER-ALLOY
POCKET WATCH
WINDER

MOOR LANE FIELD

1042 583 A 12-7-99



COPPER-ALLOY
WATCH WINDING
KEY.

HIGHER FIELD

1218 1100 I 17-7-00



COPPER-ALLOY
WATCH-WINDER.
TRACES OF GILT.

COTTAGE

1053 2 14-9-99



COPPER-ALLOY
POCKET-WATCH KEY

WILL PARK

889 939 A 22-1-99



BROKEN COPPER-ALLOY
WATCH KEY.
PROBABLY RECENT.

SEVEN ACRES
701. 1102 B. 1-8-98



WATCH KEY

SEVEN ACRES
1268 997A 8-8-01



WATCH KEY

GREAT BANEY'S
832A RH.
1483 993 B78 23-10-03



WATCH KEY

PARSONAGE PARK
992 D AB.
1629 01098754 26-4-04



COPPER-ALLOY
WATCH WINDER

MEADOW
1229 1098 B 19-8-00



WATCH WINDER
PROBABLY VICTORIAN
OR LATE GEORGIAN

SEVEN ACRES
997-B. PG.
2136.00658755. 29-3-07

UKDFD 17569



WATCH KEY.

SEVEN ACRES
1102-A. PG.
2212.00748743. 29-9-07



WATCH WINDER

HILL CLOSE
982-B. PG.
2307.00638784. 4-8-08

UKDFD 17569

Taps and fittings.



TAP SPOUT
18-19th C.

SEVEN ACRES
1326 1102A 25.4.02



BRONZE BARREL
TAP.
TAPERED END BROKEN
OFF. 18th TO MID 19th C.

GILLBROOK ORCHARD
1201 1463D 12.6.00



BROKEN BARREL
TAP.
POSSIBLY 18th CENTURY

THORN PARK
309 F 10.3.97



COPPER-ALLOY
TAP SPOUT.
18-19th C.

GLABE FIELD
1217 1101F 17.7.00

BARREL TAP HANDLE
AND CYLINDER.
PROBABLY VICTORIAN

GILLBROOK ORCHARD
393 1463H 27.5.97

LEATHER WORKERS' PALM GUARDS

Some of these are of lead, and some of pewter, as evidenced by the flaking of the metal. It has been suggested that they were moulded in oyster shells by local leather and tack workers, then wrapped in a thin leather pouch or wrapped in cloth with a hole going through it to match a depression in the lead. This was then strapped to the hand to give protection when forcing needles through the leather.



PEWTER PALM
GUARD.

BRACKET CLOSE
472 910C 110.03



LEAD PALM GUARD

YONDER SHELVES
736.A. PG.
2251.00408819.19.11.07



LEAD LEATHER-
WORKERS' HAND GUARD
TRADITIONAL 'OYSTER
SHELL' SHAPE, WITH
TWO INDENTATIONS

DEEPWAY HILLFIELD
209 F 21.11.96

HORN PROTECTORS

These are quite common finds and pose something of an enigma for detectorists. Internally, they have a coarse, tapered thread, and have one or two notches on the outside. It is thought that they were screwed onto cows horns to protect other cattle in confined spaces, and it has been suggested that cord was fed through the notches and pulled tight across to the other horn protector to straighten the horns of show cattle. Thomas Hardy in "The Mayor of Casterbridge" writes of a bull: "His horns were thick and tipped with brass...", but I have yet to talk to any of our elderly farmers who remember these protectors in use. However, of the seven I have found in the parish to date, three have been filled with plugs of wood, which suggests that they might also have been used by small boys as knobkerries or perhaps by the elderly as walking stick handles.



COW HORN
PROTECTOR.
UNUSUAL IN BEING
BALL-SHAPED.

WINDMILL HILL
1033 19A 11.8.99



BRASS HORN
PROTECTOR

FOUR ACRES
1308 D. ET.
156 00618709 21.10.96



BRASS HORN
PROTECTOR.
WITH COARSE TAPERED
THREAD, TWO NOTCHES
& RETAINING PIN HOLE

WELL PARK
556 995B 20.1.98



BRASS HORN
PROTECTOR
WITH WOODEN CORE
& IRON, RETAINING PIN

SANDY HILLS
432 1235 F 12.7.97



BRASS HORN
PROTECTOR
ROUND, UNLIKE
SIMILAR FINDS.
FILLED WITH WOOD

HICHER HAM
588 1390H 10.2.98



BRASS HORN
PROTECTOR
THREAD FILLED WITH
WOOD.

BRIDGE CLOSE
764 750E 8.9.98

A SELECTION OF FINDS FROM WOODBURY PARISH



STUART BELT BUCKLE
1650-1700. HOLLOWS P
ORIGINALLY HELD PASTE
STONES. FOUND WITHIN 1
METRE OF CHARLES I TOWER
MIDDLE FIELD
6 732D 19.6.96 UKDFD. 13155



BELL PENDANT
C13-14 CENTURY.
PROBABLY USED ON
HORSE HARNESS P
HIGHER SHEPHERD PARISH
1111 1000C 8.11.99 UKDFD. 12885



SILVER SNUFF-BOX
LID ? HALLMARKED
CHESTER 1887. SCRATCH-
ENGRAVED: 'ALBERT
WILLS 1903'
SOUTH CLOSE
1293 357E 6.9.01



SEAL-HEADED
SPOON KNOP.
16-17th c
ELM FIELD
1321 928B 13.4.02



TWO-PIECE SUB-
RECTANGULAR
BUCKLE
C 1720-1790s P
HILL CLOSE
183 1307J 2.11.96 UKDFD. 12937



0.55" MINIÉ BALL
FOR AN ENFIELD
3-BAND RIFLE OF
1859. UNFIRED. BASE
PLUG OF CLAY & WAX. C
SEVEN ACRES
906 1102F 2.2.99



CLOTH SEAL 1714-1724
CAST WITH CROWN
OVER ROSE & THURLE
& HEAD OF GEORGE I
ON BACK P
HILL CLOSE
1275 1307A 29.8.01



LEAD STYLUS IN A
WOODEN HANDLE ?
SEVEN ACRES
997. B. PG.
2214.00658755.2.10.07



LEAD SPINDLE
WHORL
NEWTON'S FIELD
1381 730C 19.5.03



SILVER THIMBLE
HALLMARKED 1893
BIRMINGHAM.
MAKER = "T.O"
SEVEN ACRES
1158 1102A 26.4.00



CAST COPPER-ALLOY
ZOOMORPHIC HANDLE
IN THE SHAPE OF A
DOLPHIN. PROBABLY C
GEORGIAN-VICTORIAN
SEVEN ACRES
822 997H 4.11.98 UKDFD. 12757



HENRY VI GROAT
1422-1427. ANNULET
15th C. CALAIS MINT.
MM: ENGRAVED, PIERCED
CROSS. P
BONFIRE
625 1105F. 14.4.98 UKDFD. 12370



RICHARD III GROAT
1483-1485.
MM: HALVED SUN
AND ROSE P
ELM FIELD
1400 927/928A 4.6.03 UKDFD. 12351



PEWTER HARNESS
BOSS.
18th TO 19th CENTURY.
EVIDENCE OF SILVERING P
LONG FIELD
703 812B 3.8.98 UKDFD. 12879



BAYONET SCABBARD
HOOK. NAPOLEONIC.
ATTACHED SCABBARD
OF SOCKET BAYONET
TO BELT. P
ELM FIELD
2 9 17.6.96 UKDFD. 13214



COPPER-ALLOY
FILIGREE BUTTON.
VICTORIAN.
HOME CLOSE
478 1087G 13.9.97 UKDFD. 12928



COPPER-ALLOY P
HARNESS MOUNT.
FLORAL PATTERN WITH
INTEGRAL STUD.
PROBABLY 18th CENTURY
GLOBE FIELD
1080 1101A 5.10.99 UKDFD. 12869



CROTAL OR RUMBLER
BELL ATTACHED TO
HORSE HARNESS. IN
EXCEPTIONAL CONDITION
WITH IRON PEA. 18th C ?
LAWN
103 J 27.5.96 UKDFD. 25190



CIRCULAR MOUNT
17th CENTURY. P
TWO LUGS AT REAR
HIGHER SO WHILL
1393 1004A 2.6.03 UKDFD. 12920



PURSE BAR & LOOP
BROKEN.
LATE 15th, EARLY 16th
CENTURY P
FOUR ACRES
1278 1308C 29.8.01 UKDFD. 12905



JOHN PENNY 1203-
1207. SHORT CROSS.
[CHANGED TO LONG CROSS IN
1247 TO PREVENT CLIPPING]
INSCRIBED 'HENRICUS' MINTED
BY HUB AT LINCOLN. CLASS 582
ELM FIELD
3 928A 1.8.96 UKDFD. 12382



HENRY III HALFPENNY
1248-1250 [HALF-OUT
PENNY]. MINTED BY
NICOLE, AT WINCHESTER
OR SHREVEBURY. CLASS 3A
BON FIRE
260 1105B 21.1.97 UKDFD. 12423



'FLEUR DE LIS'
TIN PLATED KNIFE-
END STOP.
GEORGIAN ?
WELL PARK
1143 995A 10.3.00 UKDFD. 13160



'PASTE' BUTTON IN
SILVER-PLATED MOUNT.
PROBABLY VICTORIAN.
HILL CLOSE
873 1307D 18.12.98



CASKET KEY
C 11-12th CENTURY
FOUR ACRES
1308. A. ET.
2085.00618709.28.9.06 UKDFD. 12341



COPPER-ALLOY SADDLE
POMMEL COVER.
16-17th C. P
LONG FIELD
1424 80A 27.6.03 UKDFD. 25187



EAST INDIA COMPANY
TOKEN 1794. INSCRIBED
'V.O.C 1794'. VERGENDE
OOST-INDISCHE COMPAGNIE
TWO LIONS ON REVERSE
FOUR ACRES
235 C 8.12.96



FLOWER-PATTERNED
BUTTON. 17th CENTURY
ONE-PIECE CAST COPPER-
ALLOY. ENGRAVED WITH
FLEURET & RINGS P
FOUR ACRES
279 C 3.2.97 UKDFD. 12906



BRNZE ONE-THIRD
OUNCE TROY CUP P
WEIGHT. FOR BULLION
PROBABLY 17-19th C. P
NEWTON'S FIELD
1064 730A 22.9.91 UKDFD. 16488

TWO-PIECE
RECTANGULAR BUCKLE.
LADY'S DRESS BUCKLE
C19-20 CENTURY
ELM FIELD
927 J4. B
1496 001877 10.12.03 UKDFD. 13211



BUTTON OF THE
FIRST DEVON
YEOMANRY OR
FIRST DRAGOONS ? 19th
HILL CLOSE
1267 932B 7.8.01 UKDFD. 25204

Nigel Tucker

A SELECTION OF FINDS FROM WOODBURY PARISH

BRASS HORN PROTECTOR. GEORGIAN/VICTORIAN
GILLBROOK ORCHARD
155 F 29-7-96
UKDFD. 13434

GOLD & AMETHYST? RING. FOUR PERIPHERAL STONES MISSING. C 17th TO 19th CENTURY
LONG FIELD
611 812H 22-3-98
UKDFD. 13897

SILVER ENGRAVED FINGER RING. CHESTER HALL MARK MAKER, 'AP' 1895 C
SEVEN ACRES
899 997E 6-11-98

COPPER-ALLOY PIPE TAMPER - BASE BROKEN SEMI PNEUMATIC FEMALE FIGURE. P 18th TO 19th CENTURY
HILL CLOSE
1166 1307D 13-5-00
UKDFD. 12447

COPPER-ALLOY CLOTHING PASTENER 17th CENTURY. P C
YONDER FIELD
1264 805D 5-8-01

KEY FOR A TUMBLER LOCK. 11-12 CENTURY. P
HICHER HAM
1390. B. PG. 2260.00638699. B-2-08
UKDFD. 12618

SILVER & HARDSTONE BROOCH. C 1860-1880. PROBABLY WITH POLISHED AGATES. SCOTTISH. NO HALLMARKS.
PIT PARK
1127 1908A 23-1-00
UKDFD. 13409

HALF-POUND LEAD WEIGHT. STAMPED WITH CROWN OVER 'C' DAGGER & 'H. CHARLOT FIRST?'
LONG FIELD
125D 495A 21-1-01
UKDFD. 13444

SILVER PIPE-STEM PERULE. HALLMARKED BIRMINGHAM, 1897, & ENGRAVED: "T.R.T."
HICHER-SHEPHERD PARK
422 1000 3-5-87
UKDFD. 12447

COPPER-ALLOY SHOE OR CLOG HARP. 18th TO 19th CENTURY.
HILL CLOSE
874 1307G 18-12-98

JAWS HARP. 18-19th C.
GREAT TANK HILL
1026. D. RP. 2206.98838778. 10-9-07

CAST COPPER-ALLOY CANDLE SNUFFER? GEORGIAN/VICTORIAN
ELM FIELD
928 J9. C 1489 001877 8-12-03
UKDFD. 13765

BROKEN COPPER-ALLOY PURSE BAR C 1475-1550. INSCRIBED: 'OMATU' & 'AMEN' P
FOUR ACRES
664 1308B. 3-7-98
UKDFD. 12458

BARREL TAP KEY 18 & 19th CENTURIES. TAP COULD ONLY BE OPENED WITH KEY FOR SECURITY. DRINK AT FEET, HENCE KEYS IN FIELDS.
GALLOPS MEADOW
77 B 22-9-96

BELT MOUNT 17th C
SEVEN ACRES
1102 A PG. 1323 0074 8743 24-4-02
UKDFD. 13735

CAST BRONZE ANGLE POSSIBLY PART OF A DROP HANDLE. P
HICHER 20 ACRES
325 3A 19-3-97
UKDFD. 12396

HAND-SHAPED TOP OF A LETTER CLIP. PROBABLY VICTORIAN
THE PRIORY
270 1394J 29-1-97
UKDFD. 13715

PETRONEL. 17th CENTURY. PROBABLY A TOY, BUT C BORED, WITH TOUCH-HOLE & COULD BE FIRED. OFTEN FOUND WITH BARRELS OFF!
HILL CLOSE
9 B 23-6-96

CAST LEAD CLOTH SEAL. IMPRESSED WITH ROYAL COAT OF ARMS. BACK PLATE MISSING - EARLY 18th CENTURY.
LITTLE BUSHES
986 459A 10-6-99
UKDFD. 12599

BROKEN POCKET SUNDIAL. 16th TO 17th C. BENT & MISSING THE OUTER ROTATING RING, LOOP & CHAIN. A RARE FIND
FOUR ACRES
63 1308H 23-10-96

BRONZE PASTRY-JIGGER WHEEL. 18th CENTURY. HAND-CUT. P
FOUR ACRES
388 1308A 26-5-97
UKDFD. 25217

BRONZE COIN WEIGHT FOR A GOLD NOBLE. 1421-1471. INSCRIBED WITH CROWN OVER LIS. WEIGHED 6.938 GRAMS WHEN NEW. NOW 3.4 CMS
BRIDGE CLOSE
356 750F 25-4-97
UKDFD. 25113

SILVER-GILT WALKING STICK FERRULE. HALL-MARKED: LONDON 1928. MAKER 'J.H.' ENGRAVED: 'C.O.H.' ANNEALED AND STRAIGHTENED.
BROAD PARK
421 368 A 1-7-97

HOOKEED SWORD-BELT MOUNT. HOOK MISSING 2 IRON MOUNTING P LUGS. 16th C. TUDOR.
SOUTH CLOSE
357B TT. 1684 9974 8892 26-9-09
UKDFD. 12741

CAST LEAD CLOTH SEAL. IMPRESSED WITH ROYAL COAT OF ARMS. BACK PLATE MISSING - EARLY 18th CENTURY.
LITTLE BUSHES
986 459A 10-6-99
UKDFD. 12599

BROKEN POCKET SUNDIAL. 16th TO 17th C. BENT & MISSING THE OUTER ROTATING RING, LOOP & CHAIN. A RARE FIND
FOUR ACRES
63 1308H 23-10-96

SILVER TEASPOON, LONDON 1794 (GEORGE III). MAKERS, PETER & JEWELLERMAN BATEMAN. ENGRAVED "I.T." ANN
HICHER SHEPHERD PARK
408 1000 J 17-6-97
UKDFD. 25113

HALF OF A SILVER CUFF-LINK. NO C ASSAY MARKS. PROBABLY GEORGIAN/VICTORIAN
THORN PARK
311 1104H 10-3-97
UKDFD. 13946

CAST COPPER-ALLOY THIMBLE. HAND PUNCHED. C EARLY 15th CENTURY
HILL CLOSE
1171 1307DD 13-5-00
UKDFD. 13245

SEAL MATRIX. P 16-17th CENTURY. INDICATED BY MULTIPLE LOOPED TOP. IMPRESSION APPEARS TO BE A FACE
FOUR ACRES
280 F 3-2-97

FOB SEAL. PROBABLY VICT. RECENT. FOUND IN TWO PARTS - ON SEPARATE DAYS! READS: "WHO CAN THIS ...?"
QUARRY PARK
312/323 E/B 11/6-2-97
UKDFD. 13463

MUSKET BALL SELECTED TO SHOW THE WELL-DEFINED CASTING LINE & STAVE
HOLLON HILL
993 725E 14-6-99

CAST LEAD POT REPAIR. REMAINS OF TOTNES-TYPE WARE ENCLOSED (S. DEVON MICACEOUS WARE) 14-15 C
FURZE BUSHES
990 458D 11-6-99
UKDFD. 12500

COPPER-ALLOY DIE OF A REVOLVING FOR SEAL MATRIX. ENGRAVED "HC" ON ONE SIDE. PRAB. 17th C
WINDMILL HILL
1035 19C 11-8-99

PEWTER PALM GUARD
PIT FIELD
1137 1012B 21-2-00

Nigel Tucker

SILVER WALKING STICK FERRULE. HALLMARKED BUT INDISTINCT.
GILLBROOK ORCHARD
1334 1463B 19-7-02

Musket balls and bullets are extremely common finds. One can almost guarantee that every field has at least one musket ball in it, not as the result of a military skirmish, but due to unsuccessful rabbit shooting! Military buttons and badges are also fairly common, especially around Woodbury common, where there has been a military presence for many years.



ROYAL HORSE ARTILLERY
SHOULDER BADGE?
'T' OVER 'RHA'
PARSONAGE PARK
992A. RB.
1697 01098754 8-10-04



COPPER-ALLOY
'DH' SHOULDER
BADGE. PROBABLY
MILITARY, BUT
UNKNOWN SOURCE
FIFTH FORD PARK
1157 1788A 16-4-00



CAP BADGE OF THE
DEVONSHIRE
REGIMENT
PARSONAGE PARK
992 A RB
1614 01098754 15-4-04



SOUTH DEVON
MILITIA CAP BADGE
P
GLOBE FIELD
1230 1101A 21-8-00



DEVONSHIRE REGIMENT
CAP BADGE
HIGHER FIELD
386 1100E 24-5-97



DAGGER OR BAYONET
CHAPE. THIS COVERED
THE POINT OF THE
LEATHER SCABBARD
LITTLE FIVE ACRES
30 4-96



ROYAL MARINE
COLLAR BADGE
WILL PARK
787 929B 28-9-98



HANDLE OF A POWDER
BRUSH. USED TO CLEAN
POWDER RESIDUE FROM
THE VENT HOLE OF
MUSKETS. CONTAINED
BRITTLE REMAINS.
LOWER FIELD
380 1236E 23-5-97



TELESCOPE OCULAR
PROBABLY MILITARY
FOUR ACRES
1354 1308A 24-8-02



COPPER-ALLOY
MILITARY HASP.
GEORGIAN.
WILL PARK
930 929I 26-3-99



COPPER-ALLOY HARNES'
HOOK, OR POSSIBLY A
SCABBARD HOOK.
WELL PARK
598 995I 10-1-98



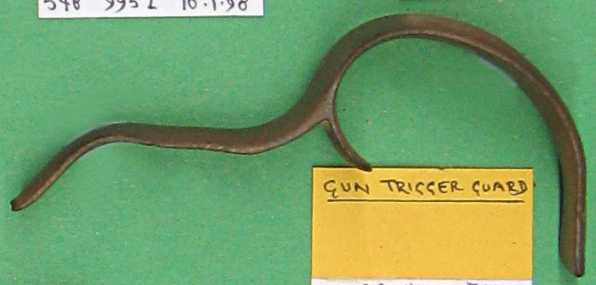
BUGLE MOUTHPIECE?
GLOBE FIELD
1331 1101A 16-6-02



MILITARY STOCK
CLASP
19'C.
HILL CLOSE
1450 1307A 6-9-03



MILITARY-STYLE
HASP. POSSIBLE
ATTACHED TO A
LEATHER POUCH. 18-19C
GILBROOK ORCHARD
1068 1463A 25-7-96



GUN TRIGGER GUARD
PARSONAGE PARK
992 F. RB.
1723 0109 8754 18-11-04



PORTION OF AA
SHELL TIMING RING
HIGHER FIELD
1245 741A 25-10-00



PART OF AN ANTI-
AIRCRAFT SHELL
TIMING RING.
STILE PARK
977 1493C 4-6-99



COPPER-ALLOY
DOUBLE-LINKED
MILITARY HELMET
CHAIN. 18-19'C.
HILL CLOSE
674 1307C 10-7-98

DOUBLE-LINKED
MILITARY HELMET
CHAIN
18-19' CENTURY
FOUR ACRES
656 1308A. 27-6-98



LEAD CONTAINER
POSSIBLY A POWDER-
CHARGE FOR CAPPING
THE LEATHER POWDER
HOLDER TO KEEP IT DRY
HILL CLOSE
189 M 4-11-96



COPPER-ALLOY SPIKE
-PROBABLY THE END
OF A WW2 ARMY
RADIO EARTHING ROD.
BROAD ARROW ON IT.
371 C 15-5-97



12-BORE, PIN-FIRE
CARTRIDGE END.
19"-20' CENTURY.
HIGHER HAM
584 1390K 9-2-98



PIN-FIRE
CARTRIDGE END
UN-NAMED
1219 83B 9-8-00



EIGHT BORE?
CARTRIDGE CASE
END.
FOUR ACRES
635 1308D 28-5-98



COPPER-ALLOY DOUBLE
LINKED CHAIN
MILITARY HELMET
CHAIN. 18-19C.
HILL CLOSE
959 1307A 19-5-99



END OF A SIDE-
PIN CARTRIDGE.
STAMPED: "LEYBRO
12 LONDON"
HILL CLOSE
1307 B. ET.
1673 00618709 8-9-04



PIN-FIRE CARTRIDGE
END
MARKED: "ELEY BROS,
LONDON 12."
FOUR ACRES
1308.A. ET.
2187.00618709.30-8-07



SCREW USED TO
SECURE THE FLINT
CLAMP ON A FLINT-
LOCK MUSKET?
ELM FIELD
608 927K 21-3-98



THREE LINKS OF
A MILITARY STRAP
CHAIN
WELL PARK
995 A PG.
1638 00658784 18-4-04



PART OF A CAP BASE
OF THE WARWICKSHIRE
REGIMENT.

APPLE TREE HILL
925 C. RH.
1857.99908766.23.10.06



LEAD POWDER FLASK
CAP & MEASURE
FLATTENED & ONE
LOOP MISSING.

BRACKET CLOSE
910. F. RH.
1951.99838378.30.1.06



PART OF A COPPER-
ALLOY STOCK HARP.
POSSIBLY MILITARY.

PARSONAGE PARK
1249 937.B. 3.1.01



FRAGMENT OF
SWORD SCABBARD
CHAPE. 15-16" C.

SCORE PITCHERS
742. A. PG.
2295.00908814.4.5.08



PORTION OF HELMET
CHAIN.

WELL PARK
995. A. PC.
2148.00838758.14.5.07



SUFFOLK REGIMENT
CAP BADGE.

VICTORIAN CROWN &
TWO-TOWER CASTLE.
PROBABLY PRE-1900

WILL PARK

777 929H 16.9.98





UKDED. 16363



HELMET CHIN CHAIN?

GREAT CRAYTONS
355. D. TT.
2107.99718903.4.12.06

Bullets.

 LEAD 1/2" DIAM. BULLET. PROBABLY 19-20 CENTURY FOUR ACRES 1180 1308F 15-6-00	 COPPER-SHEATHED LEAD BULLET 0.45" WHEAT PARK 1181 1398A 22-5-00	 ENFIELD 3-BAND RIFLE BULLET (1860 SECTIONED TO SHOW TAPERED PLUG CAVITY. GREAT CONCAR 1124 2011A 19-1-00	 0.577" BULLET FROM A MARK 7 SCHNEIDER RIFLE OF 1869. UNFIRED. DATE PLUG OF CLAY & BEES WAX. ORIGINALLY THIN LEAD COVERED HOLLOW NOSE. FOUR ACRES 215 1308J 26-11-96	 BULLET FROM ENFIELD 3-BAND RIFLE, POST 1859. CALIBRE 0.55" & NO. 5 IN CAVITY. NOTE INCISED LINE ON SIDE FOUR ACRES 158 A 21-10-96	 BULLET FROM ENFIELD 3-BAND RIFLE, 1853-59 CALIBRE 0.577" OR 0.58" MADE AT WOOLWICH. TO EASE LOADING, CALIBRE REDUCED IN 1853 HIGHER SHEPHERD PARK 171 F 4-7-96
 BULLET APPROX: 0.57" DIAM. NO BRASS ARROWS ON RIM. PROBABLY 20 CENTURY ELM FIELD 607 927E 21-3-98	 BULLET FROM 0.45" SERVICE REVOLVER 1930's. FOUR ACRES 276 D 2-2-97	 BULLET FROM ENFIELD 3-BAND RIFLE 1853-59. NOTE THE 4 BRASS ARROWS ON RIM & NO. 7 IN CAVITY, WHICH WAS FILLED WITH A WOODEN PLUG LOWER FIVE ACRES 170 B 21-7-96	 BULLET. 0.4" ? LONG FERNS 324C.TT. 1652 99838925 14-6-04	 BULLET. 0.4" ? LONG FERNS 324D.TT. 1653 99838925 14-6-04	 0.30" CALIBRE BULLET. WILL PARK 398 F 28-3-97
 DEFORMED 8-SIDED 'BRENNKE' RIFLED SLUG, USED IN A SMOOTH BORE SHOTGUN. INTRODUCED IN 1898 WELL PARK 205 E 18-11-96	 7-SIDED 'BRENNKE' RIFLED SLUG, USED IN A SMOOTH-BORE SHOTGUN. INTRODUCED IN 1898 FOUR ACRES 1308 G. ET. 229 00618709 6-12-96	 7-SIDED 'BRENNKE' RIFLED SLUG, USED IN A SMOOTH-BORE SHOTGUN. INTRODUCED IN 1898 HIGHER SHEPHERD PARK 190 B 4-7-96	 LEAD "BRENNKE" SEVEN-SIDED BULLET. 19" C. USED IN 40 BORE GUN HILL CLOSE 1439 1307B 18-8-03	 'BRENNKE' 7-SIDED SLUG, FOR SMOOTH-BORE SHOTGUN. INTRODUCED IN 1898 FOUR ACRES 1308 A. ET. 1826. 00618709. 19-8-05	 0.38" CALIBRE BULLET. LOWER HAM 628 1397A. 9-5-98
 0.303 BULLET GREAT CRAYTONS 35SETT. 1697 9978903 18-6-04	 0.303 BULLET. THORN PARK 544 1104E 31-12-97	 UNFIRED 0.22" BULLET LONG FIELD 339 C. 22-8-96	 8 MM BLANK CARTRIDGE CASE. QUARRY PARK 597 996C 13-2-98	 BULLET. PARVAGE PARK 992 F. RB. 1809 01098754 6-5-05	 0.32" CALIBRE BULLET. WILL PARK 336 A 28-3-97

Musket Balls.

 MUSKET BALL, 0.75" NOTE REMAINS OF CASTING SPRUE OR POURER, SO POSSIBLY MANUFACTURED PRIOR TO 1769 HIGHER SHEPHERD PARK 90 F 13-6-96	 PEWTER MUSKET BALL? BADLY CORRODED, BUT MOST UNUSUAL. THORN PARK 795 1104D 1-10-98	 MUSKET BALL 0.6" COMMON FINDS, USED FOR RABBIT SHOOTING? NO CASTING SPRUE-MADE IN SHOT TOWER. POST 1769 FOUR ACRES 91 J 9-10-96	 MUSKET BALL WITH HOLE CAUSED BY EXTRACTOR SCREW AFTER A MISFIRE GLOBE FIELD 911 1234I 7-3-99	 MUSKET BALL 0.5" TYPICAL OF THE MANY FLINTLOCK & PERCUSSION WEAPONS WIDELY OWNED BY CIVILIANS IN 18 & 19 C. SEVEN ACRES 144 F 15-10-96	 BUCKSHOT. SEVEN ACRES 815 1102H 29-10-98
 MUSKET BALL, APPROXIMATELY 0.4" CASTING RIM & SPRUE MARK CLEARLY VISIBLE. WELL PARK 599 995I 13-2-98	 SMALL MUSKET BALL. REMAINS OF CASTING SPRUE WELL DEFINED, SO PRE 1769? SEVEN ACRES 438 1102C. 23-7-97	 LEAD MUSKET BALL WITH WELL-DEFINED SPRUE & CASTING LINE. UNFIRED HIGHER SHEPHERD PARK 866 1000C 29-11-98	 MIS-CAST LEAD 'BUCKSHOT'. REMAINS OF SPRUE & CASTING LINES EVIDENT. ELM FIELD 752 928H 31-8-98	 'DUMBBELL' LEAD PISTOL BALLS. (UNSEPARATED FROM MOULD?) THORN PARK 1104. C. Pp. 54 2426. 00828758. 19-10-15	 LEAD CASTING SPRUE CUT FROM A MUSKET BALL. THORN PARK 516 1104K. 26-11-97
 LEAD MUSKET BALL WITH PRONOUNCED CASTING SPRUE. UNFIRED. MIDDLE FIELD 908. C. RH. 1040. 98838778. 26-1-06	 LEAD BUCK SHOT. PROMINENT SPRUE MARK. BRAKES CLOSE 910. C. RH. 2018. 98838778. 10-4-06				



LEAD FLINT HOLDER
FOR HOLDING MUSKET
FLINTS BETWEEN
THE CLAMPS
FOUR ACRES
1139 1308I 3-12-96



LEAD FLINT HOLDER
FOR HOLDING MUSKET
FLINTS BETWEEN
THE CLAMPS
HILL CLOSE
1138 1307F 2-10-96



LEAD FLINT HOLDER?
FOLDED IN HALF
WHEN FOUND
PARSONAGE PARK
1235 934C 12-10-00



CAP BADGE OF THE
15th KINGS HUSSARS.
CENTRAL LION ON
CROWN MISSING. C
APPLETREE HILL
815. A. JP.
2231-99658790-23-10-07

LEAD ITEMS OTHER THAN OFFICIAL WEIGHTS & MILITARIA

Lead was readily obtainable and could easily be worked by casting, beating and cutting, so it was frequently used by local people for rough weights, utensils and other items, sometimes mixing it with tin to form pewter, which was harder, but unfortunately it does not weather at all well in the ground.



LEAD STYLUS.
BRAKE'S CLOSE
910.B. RH
1975.98838778.8-2-06



LEAD STYLUS
TOOTH MARKS ON
END?
ELM FIELD
928.B. JG.
2394.00148372-29-9-10



LEAD STYLUS
LOWER FIELD
686. C. PG.
2268.0040 8814.12-2-08



LEAD WATER-PUMP
VALVE WEIGHT
MIDDLE FIELD
678 999B 9-7-98



LEAD DRESS WEIGHT
TO RECENT. SEWN
INTO DRESS HEMS TO
MAKE THEM HANG
STRAIGHT.
MIDDLE FIELD
82 C 21-7-96



LEAD DRESS WEIGHT
LITTLE FIVE ACRES
340 E 2-4-97



LEAD STYLUS?
FOUR ACRES
1308. E. ET.
2080.00618709.18-9-06



LEAD STYLUS.
FOR WRITING ON SLATE
19th OR EARLY 20th CENTURY
GLOBE FIELD
400 1294D 7-6-97



LEAD WRITING
STYLUS? FOR
WRITING ON SLATE
19th-20th CENTURY
THORN PARK
296 I 21-2-97



DECORATIVELY
CUT LEAD DISC.
DATE & USE
UNKNOWN.
0071 LEJ - G
1045 ?-A 31-8-99



LEAD STYLUS?
FOUR ACRES
1308. C. ET.
2078.00618709.18-9-06



CAST LEAD WRITING
STYLUS, WITH
SUSPENSION LOOP
OR A RICK-COVER
WEIGHT?
HILL CLOSE
876 1307I 18-12-98



LEAD STYLUS?
INNER BUSHES
983 347B 9-6-99



LEAD STYLUS.
FOR WRITING ON
SLATE
FIFTH FORD PARK
1145 1788A 7-4-00



CAST LEAD 'PLANT'
DECORATION OR
MOUNT.
SEVEN ACRES
1156 997A 12-4-00



PATTERNED LEAD
SHEET. PART OF A
LEAD RECEPTACLE?
FOUR ACRES
277 A 2-2-97



PATTERNED LEAD
SHEET. PART OF A
LEAD RECEPTACLE?
EVIDENCE OF GILDING
DATE UNKNOWN
FOUR ACRES
222 A 3-12-96



LEAD BALL & PIN
DATE & USE UNKNOWN
FOUR ACRES
191 K 5-11-96



MUSKET BALL-TYPE
WEIGHT
REMAINS OF IRON LOOP AT TOP
QUARRY PARK
996 B. PG.
1639.00658784 18-4-04



MUSKET BALL-TYPE
WEIGHT
REMAINS OF IRON LOOP AT TOP
HEATHFIELD
1878TT
1651.9988925 14-6-04



MUSKET BALL?
DEEP, SMOOTH-SIDED
HOLE IN GRADE.
HALF A GRAPE SHOT? C
LITTLE TURNPIKE FIELD
817. G. JP.
2237.9965.8790.23-10-07



LEAD BLOCK.
A KNUCKLE JACK?
LOWER FIELD
1078 1236A 4-10-99



SMALL LEAD PELLET
WELL-PATINATED
DATE & USE UNKNOWN
LOWER LAMB PARK
1107 H. RB.
184 0109 8754 6-5-05



SMALL LEAD PELLET
WELL-PATINATED.
ALMOST IDENTICAL TO ITEM 1811
LOWER LAMB PARK
1107 I. RB.
1812 01098754 6-5-05



LEAD DISC.
A WEIGHT, WELL-PATINATED, INCISED LINES ON IT. POSSIBLY MEDIEVAL.
HILL CLOSE
870 1307 G. 16-12-98



LEAD DRESS WEIGHT & THE CLOTH COVER IN WHICH IT WAS FOUND
WINDMILL HILL
1037 19A 14-8-99



CUBOID LEAD BEAD?
ELM FIELD
927 JG. B
1491 001 877 9-12-03



LEAD "A" HEADSTAVE LETTER
HIGHER LAMB PARK
993 C. RB.
1795 01098754 23-4-05



LEAD POT MEND?
POSSIBLY FOR A THIN METAL POT. LATER HOLED.
SEVEN ACRES
1375 1102B 7-5-03

FLORAL DESIGN LEAD CASTING
UNKNOWN USE & DATE
THORN PARK
1446 1104B 1-9-03



LEAD SPINDLE WHORL
ELM FIELD
927 JG. B
1507 001877 13-12-03



LEAD SPINDLE WHORL?
BROAD RYDON
1026 1306 G 28-7-99



LEAD-CAPPED NAIL
A DOOR STUD?
NINE ACRES
856 994B 20-11-98



LEAD-HEADED DOOR STUD.
GLOBE FIELD
910 1234 B 7-3-99



PART OF A LEAD SHOTCOCK?
GREAT TANK HILL
1026 C. RH.
1918.98838778.3-1-06



LEAD SPINDLE WHORL?
SEVEN ACRES
1161 1102A 28-4-00



CAST LEAD HEMISPHERE WITH NECK.
USE UNKNOWN.
GREAT TANK HILL
1026 B. RH.
1988.9883 8778. 3-3-06



DRUM-SHAPED LEAD WEIGHT.
A SPINDLE WHORL?
GREAT TANK FIELD
1026 A. RP.
2081.9883 8778. 21-9-06



LEAD POT LEG?
MODERN.
PARSONAGE PARK
992 E. RB.
2147.0109 8754.30-3-07



ROUND LEAD WEIGHT WITH CENTRAL HOLE.
A LOOM WEIGHT? C
SEVEN ACRES
997 D. PG.
2211.00658755.28-9-07



ROUND LEAD WEIGHT MADE FROM A MUSKET BALL?
A LOOM WEIGHT?
FOUR ACRES
1308 E. ET.
2222.00618709.11-10-07

65



CAST LEAD WITH DEEP INCISED PATTERN
PART OF A FRAME?
PROBABLY MEDIEVAL
HILL CLOSE
238 D 9-12-94



SMALL LEAD DISC WITH CONCENTRIC RAISED CIRCLES. C
USE & DATE UNKNOWN.
SEVEN ACRES
997 C. PG.
2210.00658755.28-9-07



SHORT LEAD BAR.
A WEIGHT?
SEVEN ACRES
836 997U 6-11-98

Lead Cloth and Bag Seals



LEAD CLOTH SEAL
CAST "T" OVER "O" ON ONE SIDE. PARTICULARLY ON OTHER 16 C.
HILL CLOSE
1179 1307 C 15-5-00



LEAD CLOTH SEAL
FRONT MARKED: "G. PAUMGARTEN S. ERBEN" WITH BEAR EMBLEM. P
PARSONAGE PARK
992 B. RB.
1731 01098754 26-11-04



LEAD CLOTH SEAL
TEN ACRES
729 A. JP.
1894.99708816.26-9-05



LEAD CLOTH SEAL
BACK DISC
FOUR ACRES
1172 1308 B 14-5-00



REAR DISC OF A LEAD CLOTH OR BAG SEAL
HIGHER SHEPHERD PARK
1430 1000 B 16-7-03



LEAD CLOTH SEAL
BACK - OR LEAD WASHER?
PARSONAGE PARK
992 E. RB.
1803 0109 8754 24-4-05



OUTER DISC OF A LEAD CLOTH SEAL?
PARSONAGE PARK
992 B RB
1621 01098754 19-4-04



RUSSIAN BAG SEAL
1820. P
"SPB": ST. PETERSBURG. ATTACHED TO BAGS OF FLUX WASTE FERTILISER
GREAT TANK HILL
1026 A. RH.
1916.9883 8778. 3-1-06



RUSSIAN BAG SEAL
178-? "SPB": ST. PETERSBURG. ATTACHED TO BAGS OF FLUX WASTE FERTILISER.
LITTLE TANK HILL
909 B. RH.
1917.98838778. 3-1-06



LEAD BAG SEAL
1817. "SPB": ST. PETERSBURG. ATTACHED TO BAGS OF FLUX WASTE FERTILISER
GREAT TANK HILL
1026 G. RH.
1931.98838778.18-1-06



RUSSIAN BAG SEAL
1727. P
"SPB": ST. PETERSBURG. ATTACHED TO BAGS OF FLUX WASTE FERTILISER
LITTLE TANK HILL
909 B. RH.
2017.98838778. 10-4-06



LEAD BAG SEAL.
STAMPED: "9 ELMS BRAND" & NOTIF" OF NINE ELM TREES.
HAMPTON'S CLOSE
931 B. PG.
2063.00638784.24-8-06



LEAD CLOTH SEAL
GREAT CRAYTONS
356. A. TT.
2104.99718903. 4.12.06



LEAD BAG SEAL
SEVEN ACRES
997. B. PG.
2126.00658755. 7.3.07



LEAD CLOTH SEAL
BACK.
APPLETREE HILL
815. D. JP.
2234.99658790. 23.10.07



HORSE FOOT FROM
LEAD STATUETTE
MUDLEMOOR
22. 955915 15.2.98



FLORAL-PATTERNED
LEAD.
LONG FIELD
812. F. NS.
2380.00358794. 3.3.10

BELLS AND BELL-LIKE OBJECTS

Open bells were used mainly as horse harness bells, house bells and hand bells, and because of their relatively large size most are found in a broken state. Small, globular crotal or rumbler bells were used on domestic animals including birds, and by dancers such as the Morris dancers of today. Objects which at first sight appear to be bells might in fact be large buttons, or indeed, when inverted they are seen to be furniture castor cups!



PART OF A WHITE-METAL HOUSE OR ANIMAL BELL.
DATE UNKNOWN.
BRIDGE CLOSE
765 750F 8.9.98



SMALL CROTAL BELL
CAT BELL?
QUARRY PARK
1405 1003D 4.6.03

MISCELLANEOUS & UNIDENTIFIED ITEMS

Many artifacts cannot be readily identified, often because they represent only a part of the original item or they have never been found in a datable context. Others might be locally made and so unique.



PADLOCK BODY.
GEORGIAN
MEADOW
1060 695D 6.9.99



CASKET PADLOCK
POSSIBLY GEORGIAN
HIGHER LAMB PARK
993 G. RB.
1810 01098754 6.5.05



CAST PATTERNED BRASS
PART OF A MOUNT?
HIGHER LAMB PARK
993 C. RB.
1801 01098754 24.4.05



COPPER-ALLOY 'TAB'
A BASE FOR A RUBBER STAMP?
FLM FIELD
748 928F 28.8.98



BROKEN COPPER-ALLOY 'TAB'. DATE & USE UNKNOWN.
SEVEN ACRES
145 J 15.10.96



COPPER COIL-DISC
DATE & USE UNKNOWN
FOUR ACRES
1363 1308A 14.10.02