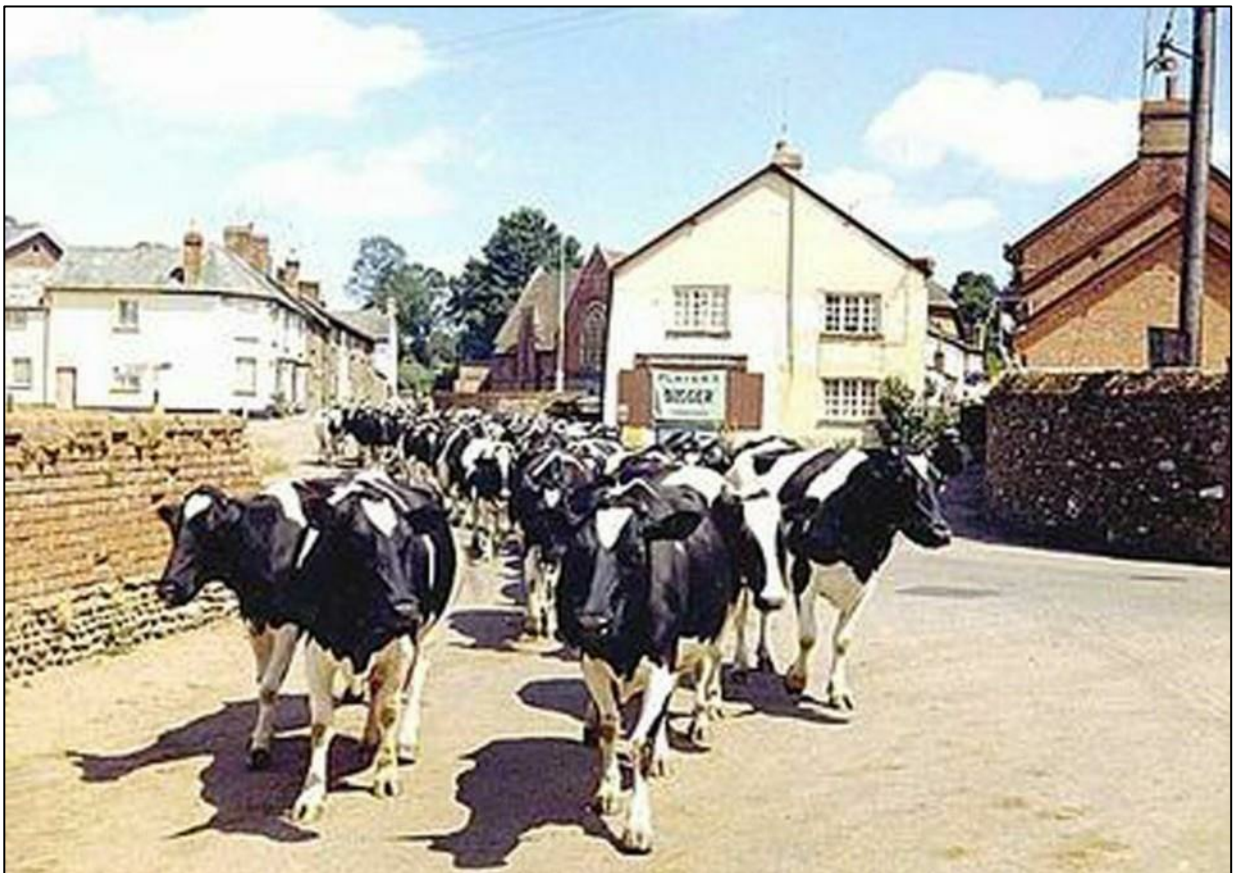


MORE WOODBURY AREA VIEWS AND IMAGES FROM 1960 - 2015



Webbers Farm cows coming home for milking 1962.

Compiled by

Roger Stokes

2021



Aerial picture of Woodbury 1982.



The Arch 1999.



Cars on the Green 1978.



Looking towards The Beacon from The Warren 1970.



Looking towards The Beacon from The Warren 1970.



Looking towards The Beacon from The Warren 1970.



Towards The Beacon 1970.



Beeches Close 1999.



Broadway House demolished wall 1986.



Bridge Farm Woodbury Salterton 1965.



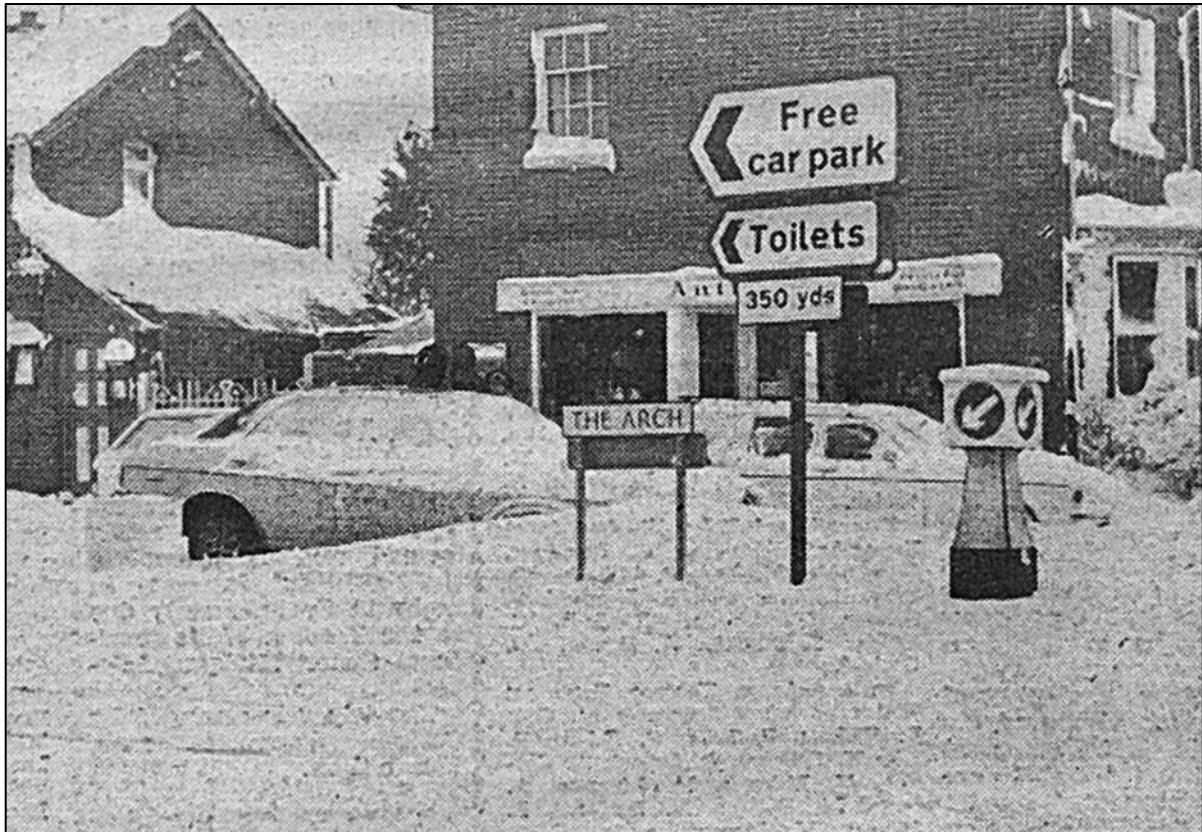
Cars parked on The Green 1970..



Webbers Farm and The Green Spot 1955.



Storm damage at Gilbrook 1982.



Newspaper photo of snow on The Arch 1978.



The Beacon 1970.



Aerial picture 1998.



Woodbury Castle 1975.



Snow at Woodbury Castle 1969.



Woodbury Castle 1975.



Tree group near Woodbury Castle 1975.



Hogsbrook Wood, an ancient woodland 2013.



A clay pit at Hogsbrook wood, where the clay was dug to build the house..



Autumn colours up from Ford Water 1995.



Autumn colours at Ford Water 1995.



Picture taken from scaffolding looking over Woodbury Garage 2005.



Picture taken from scaffolding looking over to the Maltsters 2005.



Tree planting around the Beacon 1993.



Tree planting around the Beacon 1993.



Picture taken from scaffolding around The Beeches - the back of Gillbrook House 2006.



Unique chimney pots on The Beeches to repel seagulls 2006.



More views from on high - Beeches Close 2006.



More views from on high - towards Broadway 2006.



More views from on high - towards Gillbrook Cottages and the Church 2006.



More views from on high - towards Gillbrook Cottages and the Church 2006.



More views from on high - towards Globe Hill 2006.



More views from on high - towards The Maltsters 2006.



More views from on high - towards The Castle in the background 2006.



More views from on high - towards the Scrapyard 2006.



More views from on high - towards The Castle in the background 2006.



More views from on high - towards Woodmanton Farm 2006.



The Crossroads to Broadway 1993.



Culvery Close 1993.



Funfair on The Green 1996.



Funfair on The Green 1996.



Gillbrook 1983.



Higher Gillbrook 1976.



The Golden Heart 1993.



The Golden Heart 1993.



The Arch 1976.



Passing The Green 1976.



Helicopter view of village taken by Sylvia Wickenden 1994.



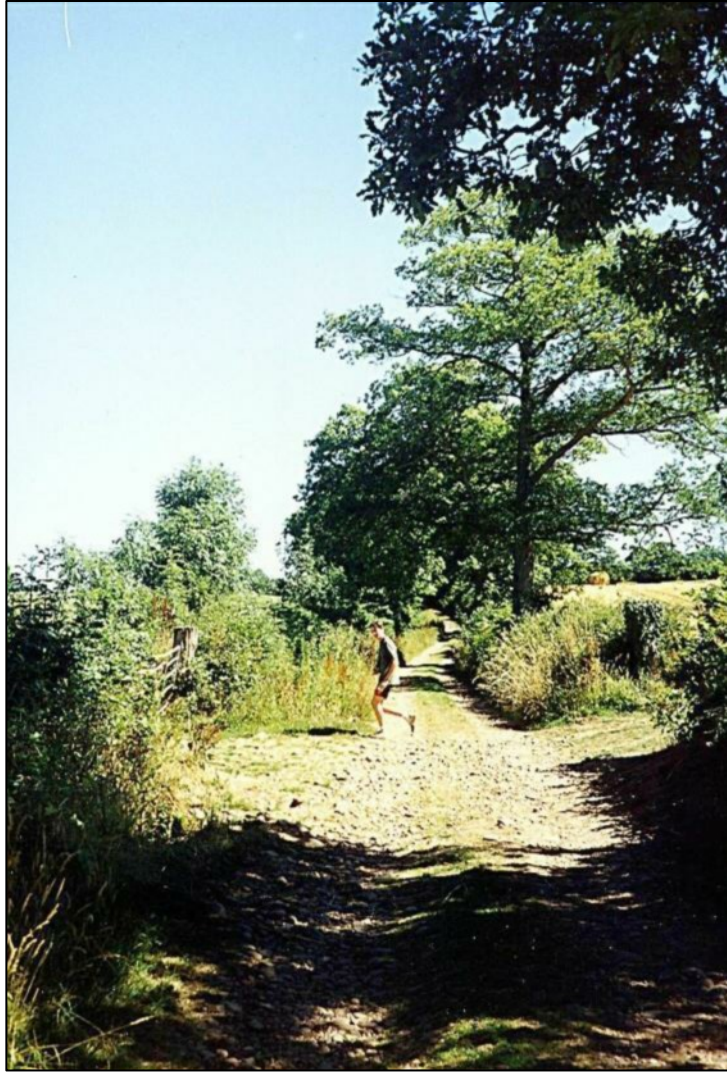
Webbers Farm and Caravan Park Caravan 1998.



View across The Green 1997



View from Woodmanton back towards the village 1992.



Walkidons Way 1984.



Walkidons Way 1984.



Walkidons Way 1984.



Furze Close at the top of Sanctuary Lane 2015.



Aerial view of lower part of the village 1992.



Woodbury Allotments 1992.



High pressure gas pipeline going through Woodbury Parish 2007.



High pressure gas pipeline going through Woodbury Parish 2007.



High pressure gas pipeline going through Woodbury Parish 2007.



High pressure gas pipeline going through Woodbury Parish 2007.



High pressure gas pipeline going through Woodbury Parish 2007.



High pressure gas pipeline going through Woodbury Parish 2007.



High pressure gas pipeline going through Woodbury Parish 2007.



High pressure gas pipeline going through Woodbury Parish 2007.



View from the top of Winman Hill across the village to the Common 2007.



The snowy winter of 1963.



The snowy winter of 1963.



The snowy winter of 1978.



The roads out were totally blocked for a week during the snowy winter of 1978.



The roads out were totally blocked for a week during the snowy winter of 1978.



Milk had to be delivered by a sled during the snowy winter of 1978.



Looking down from the crossroads during the snowy winter of 1978.



View down past The Green during the snowy winter of 1978.



Higher Venmore Farm, Downs Corner, during the snowy winter of 1978.

