

# POSTCARDS AND GENERAL VIEWS OF WOODBURY DURING THE 20th CENTURY



*The Arch Woodbury 1904.*

Compiled by  
Roger Stokes

2021



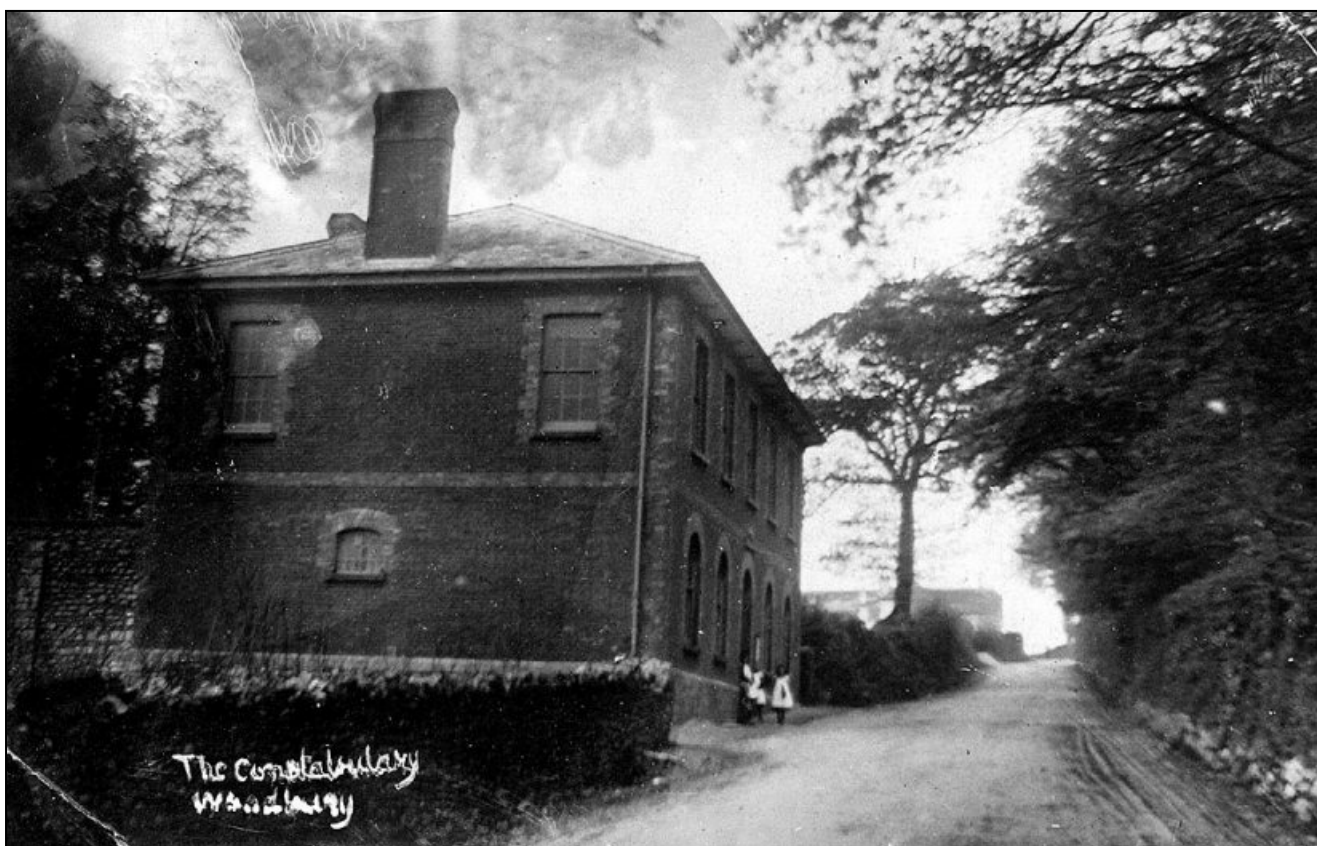
The Arch 1948.



The Arch 1957.



Thorns Cottages 1914.



The Courthouse 1904.



The Crossroads looking down to Gillbrook 1914.



The Crossroads looking up Broadway 1945.



The Crossroads looking down to Gillbrook 1930's.



Looking down Broadway to the crossroads 1940's.



Church Stile Lane to the Church 1920's.



Mitchells Tea Rooms 1940's.



Post and Telegraph Office 1900.



Church Stile Lane 1915.

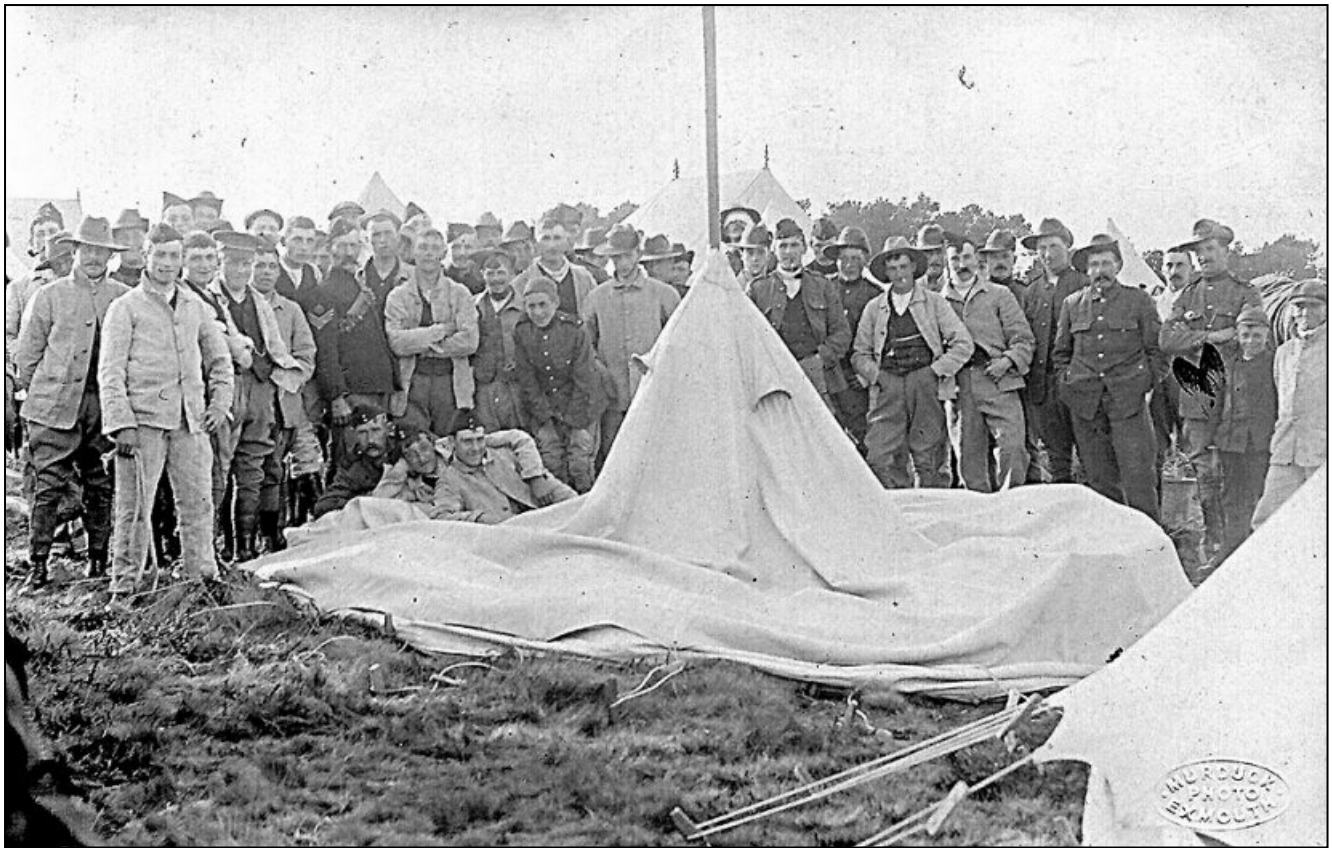


From the Green to the Church 1930's.



Crossroads from Broadway 1916.





Army camp on Woodbury Common c.1910.



Bandsmen at Army camp on Woodbury Common c.1910.



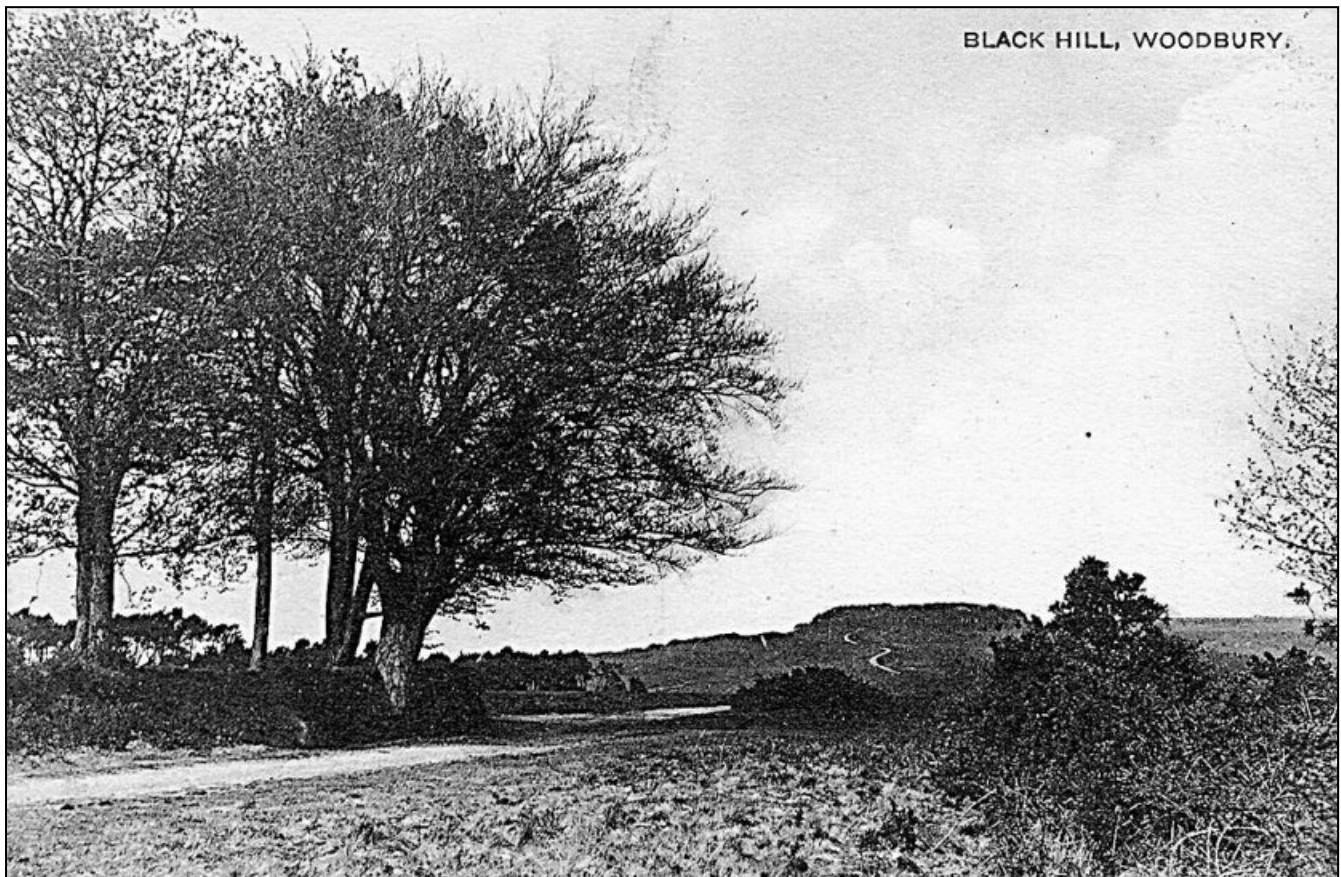
Beech Nuts, now known as Ford Water c.1920.



Looking down Broadway c.1920.



Blackhill road junction c.1930.



Blackhill view towards the Castle 1910.



Blackhill view to castle 1911.



Looking up Broadway 1913.



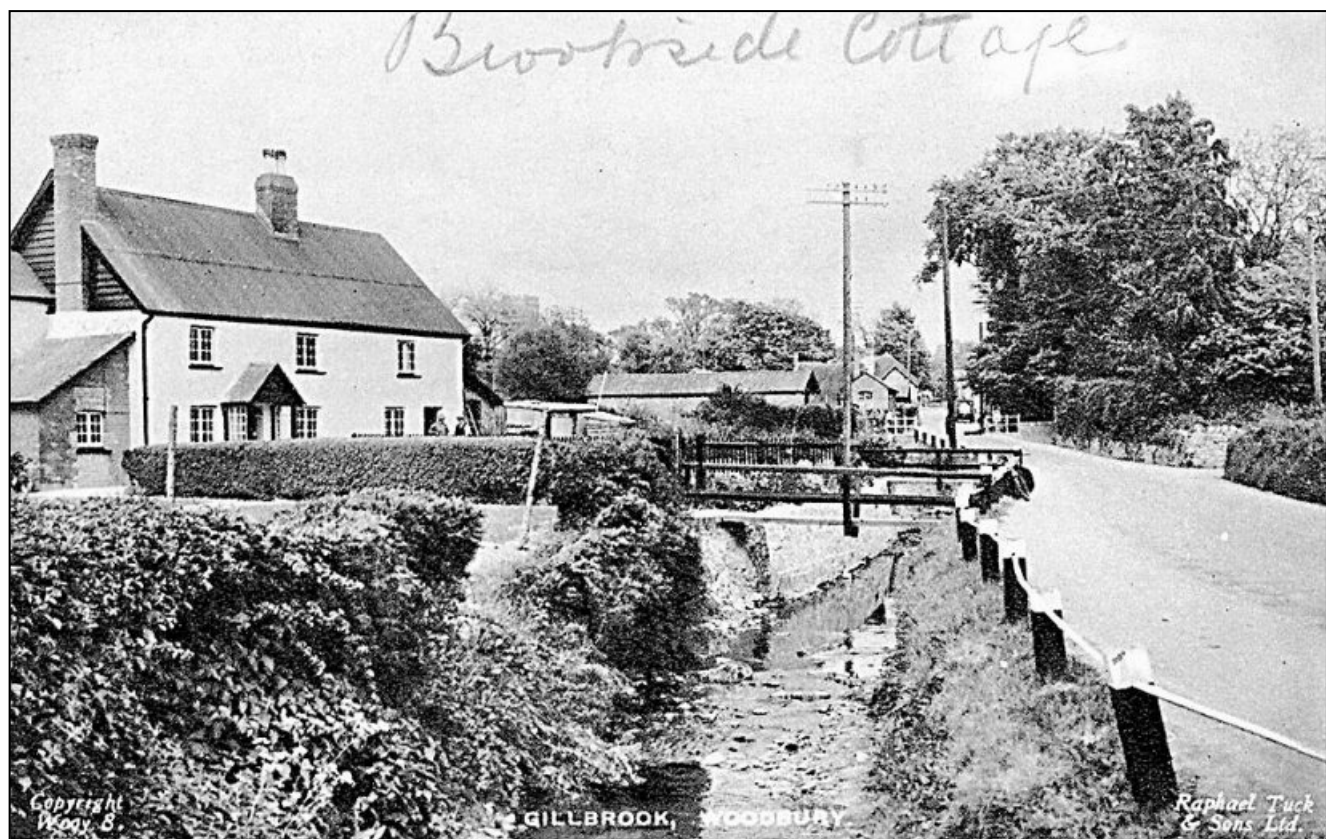
Looking up Broadway 1914.



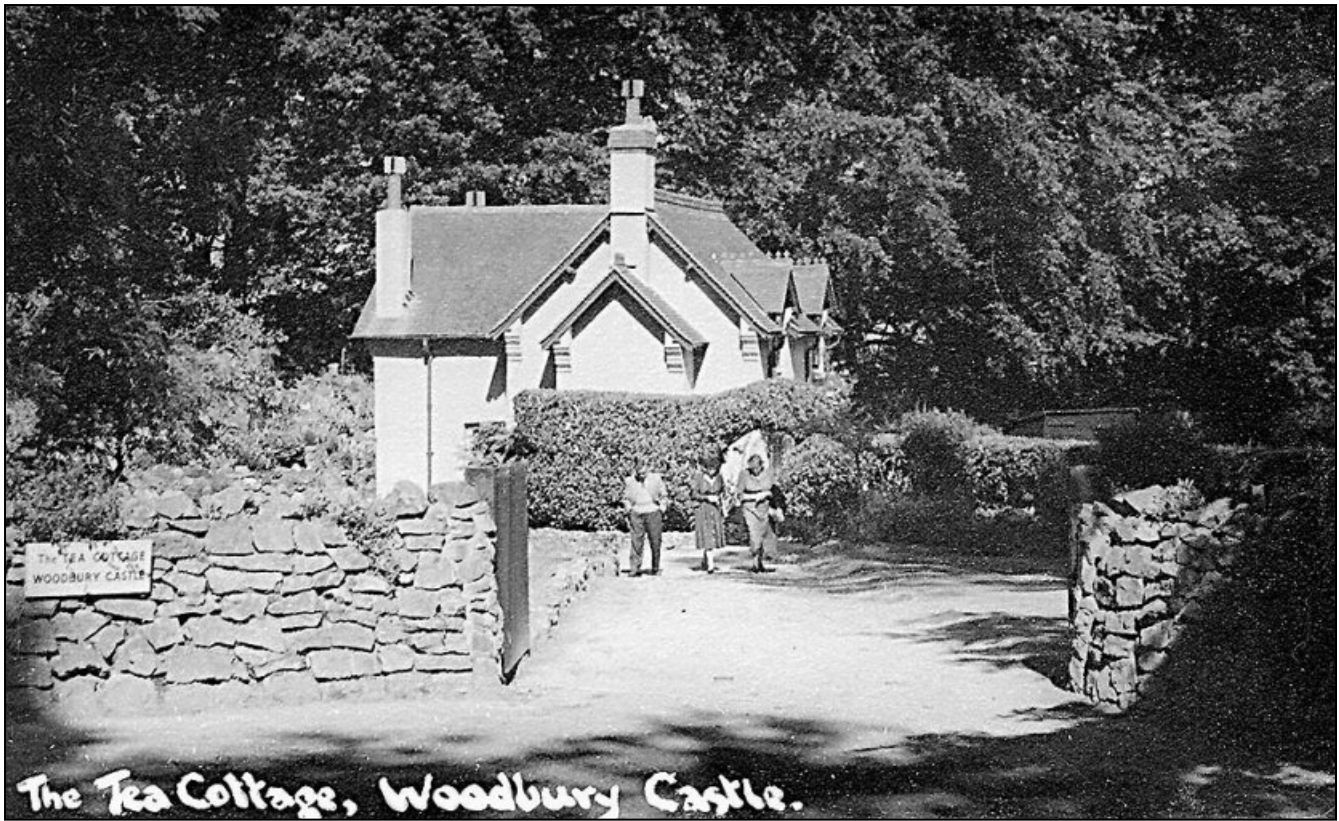
Looking down Broadway 1914.



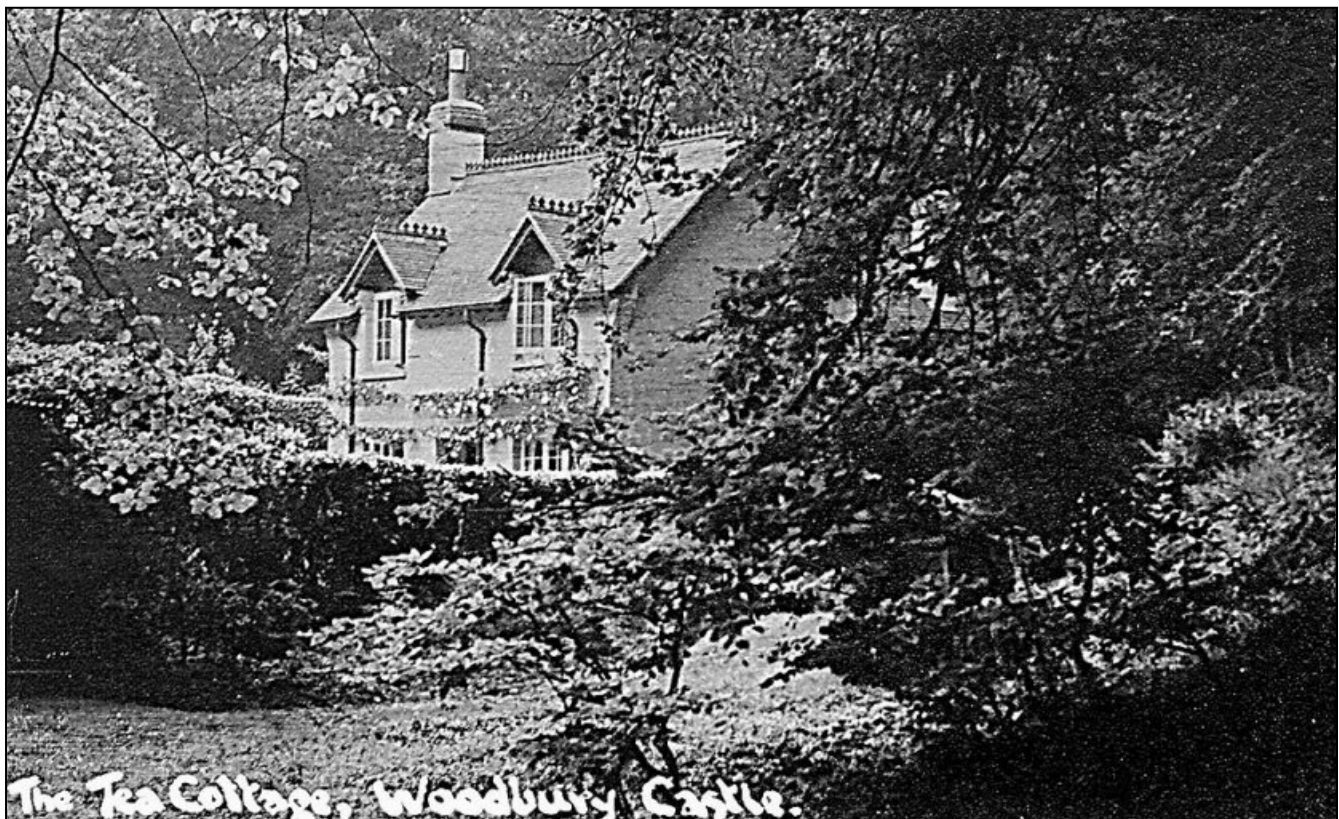
The Arch 1926.



Brookside Cottage 1913.



Castle Tea Cottage 1940.



Castle Tea Cottage side view 1940.



Castle Tea Cottage inside 1940.



Castle Tea Cottage inside 1940.





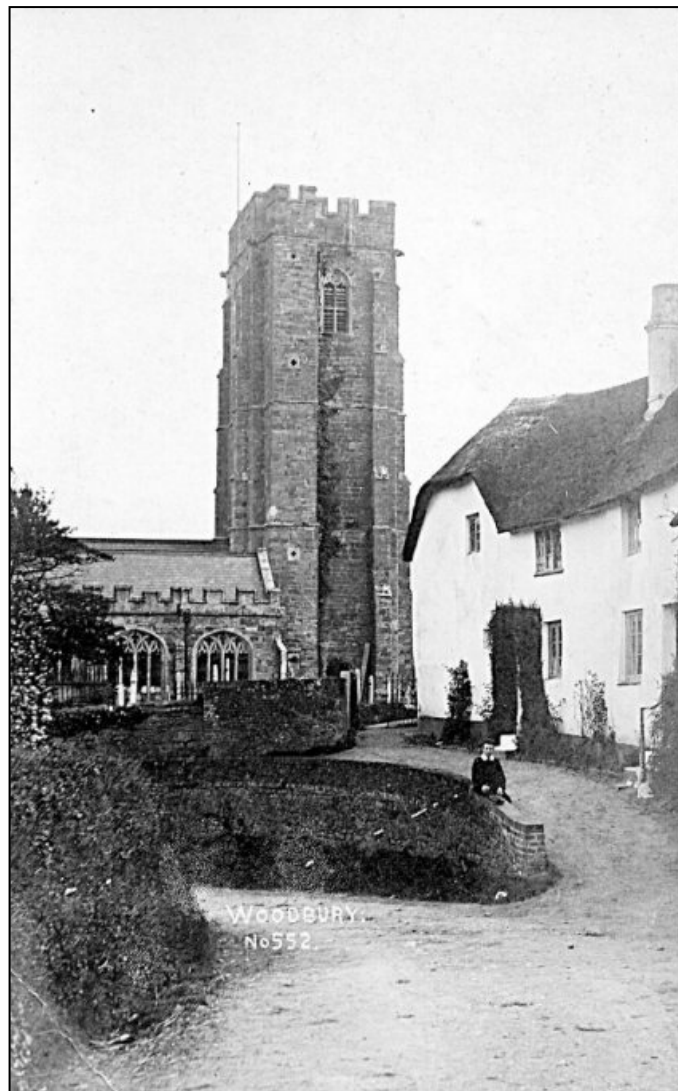
View across The Green towards the Church 1900.



Old Church lytchgate 1900.



Inside the Church with chairs 1900.



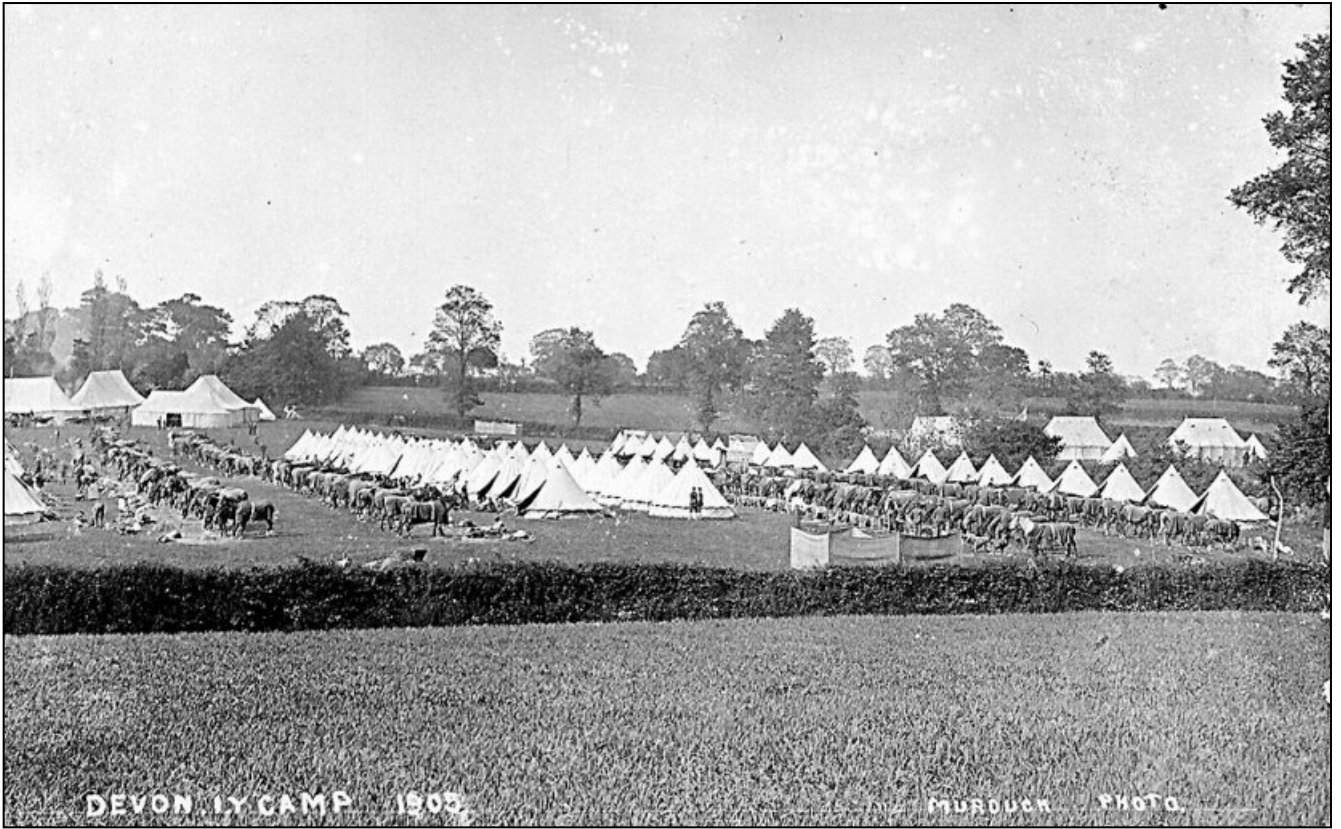
Church Stile 1910.



Church Stile House 1909.



Road up from Ford Water 1920.



Devon Infantry Yeomanry camp on the Common 1905.



Four Firs 1918.



Four Firs 1920.



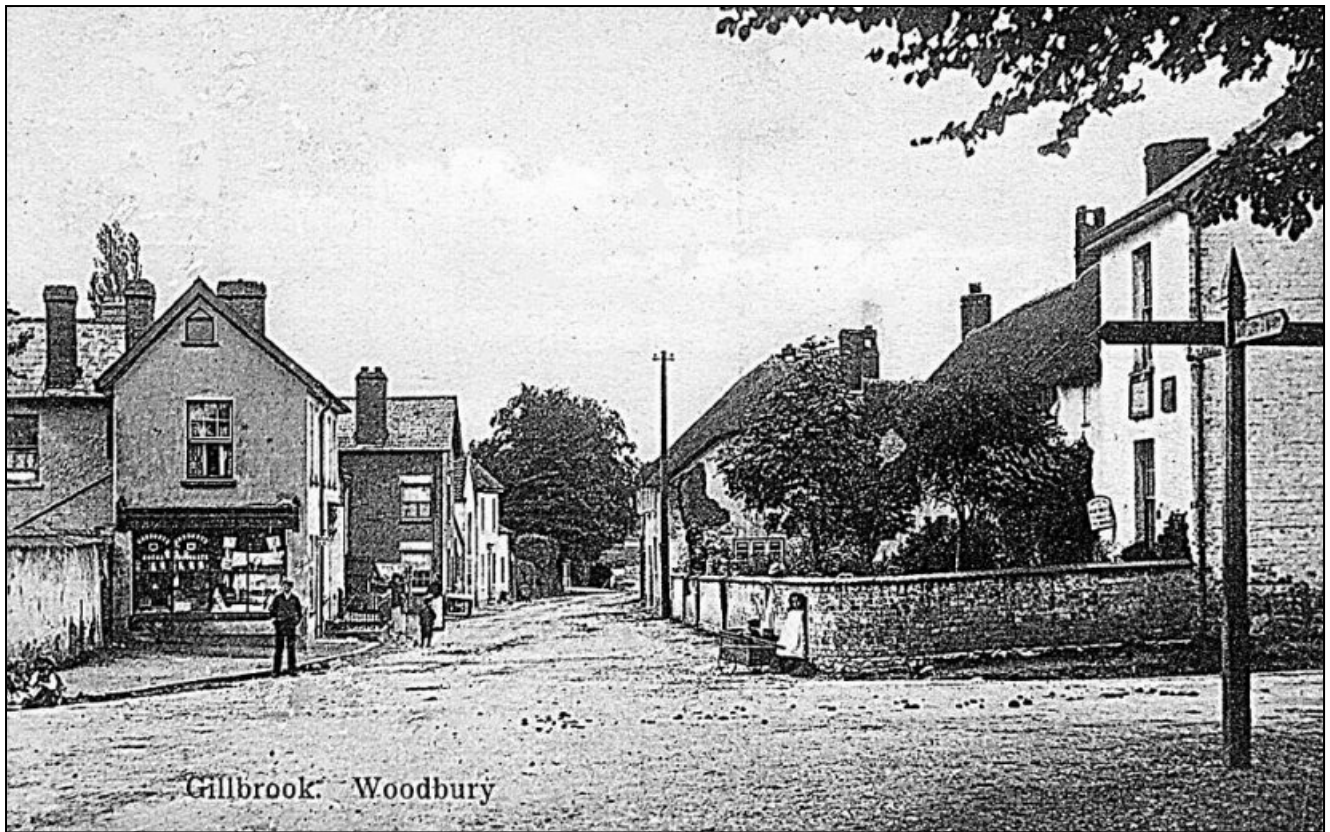
Four Firs 1912.



Gillbrook 1915.



Gillbrook 1930.



Gillbrook 1905.



Blackhill House 1909.



Govetts 1940.



Greendale House 1940.





Village Street to Arch 1940.



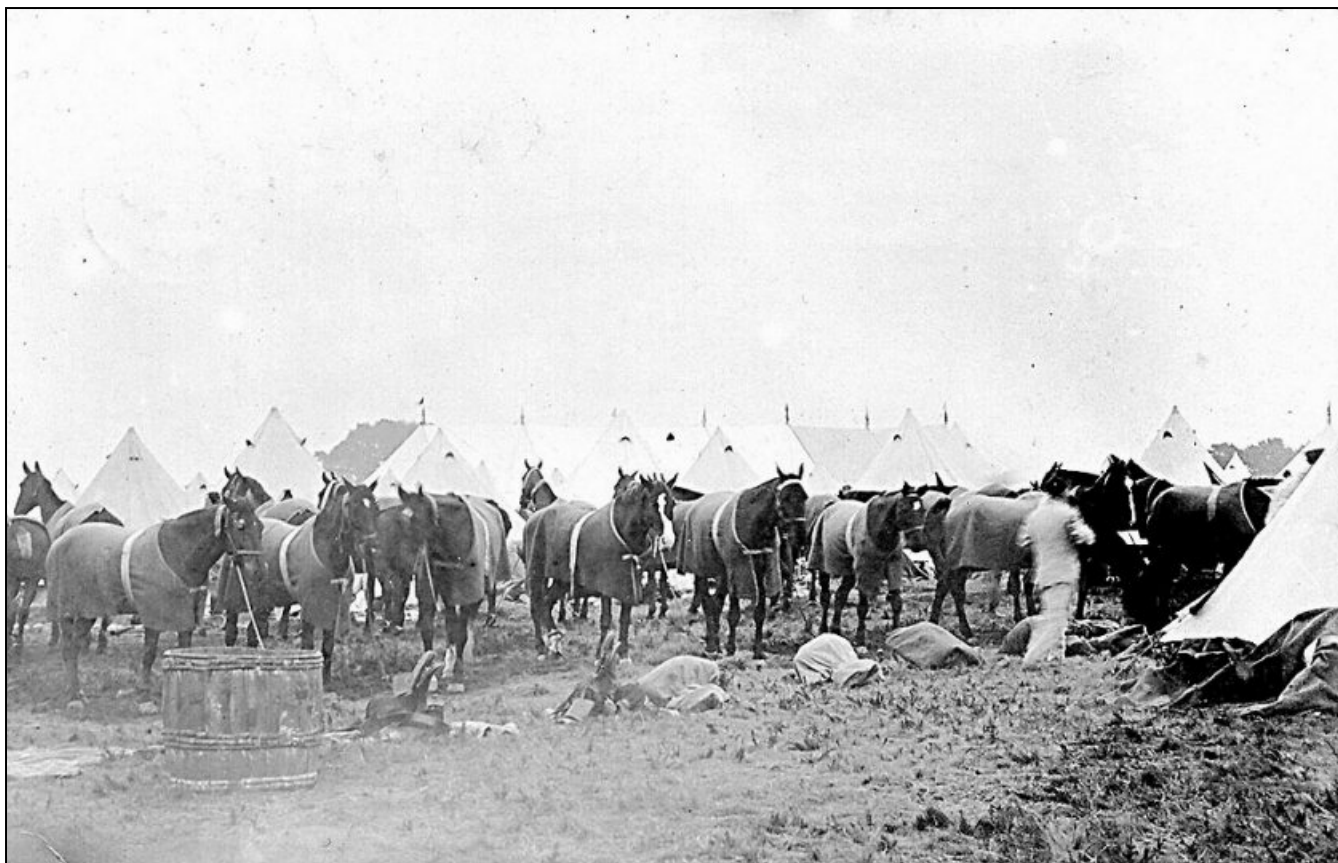
Ham Lane 1921.



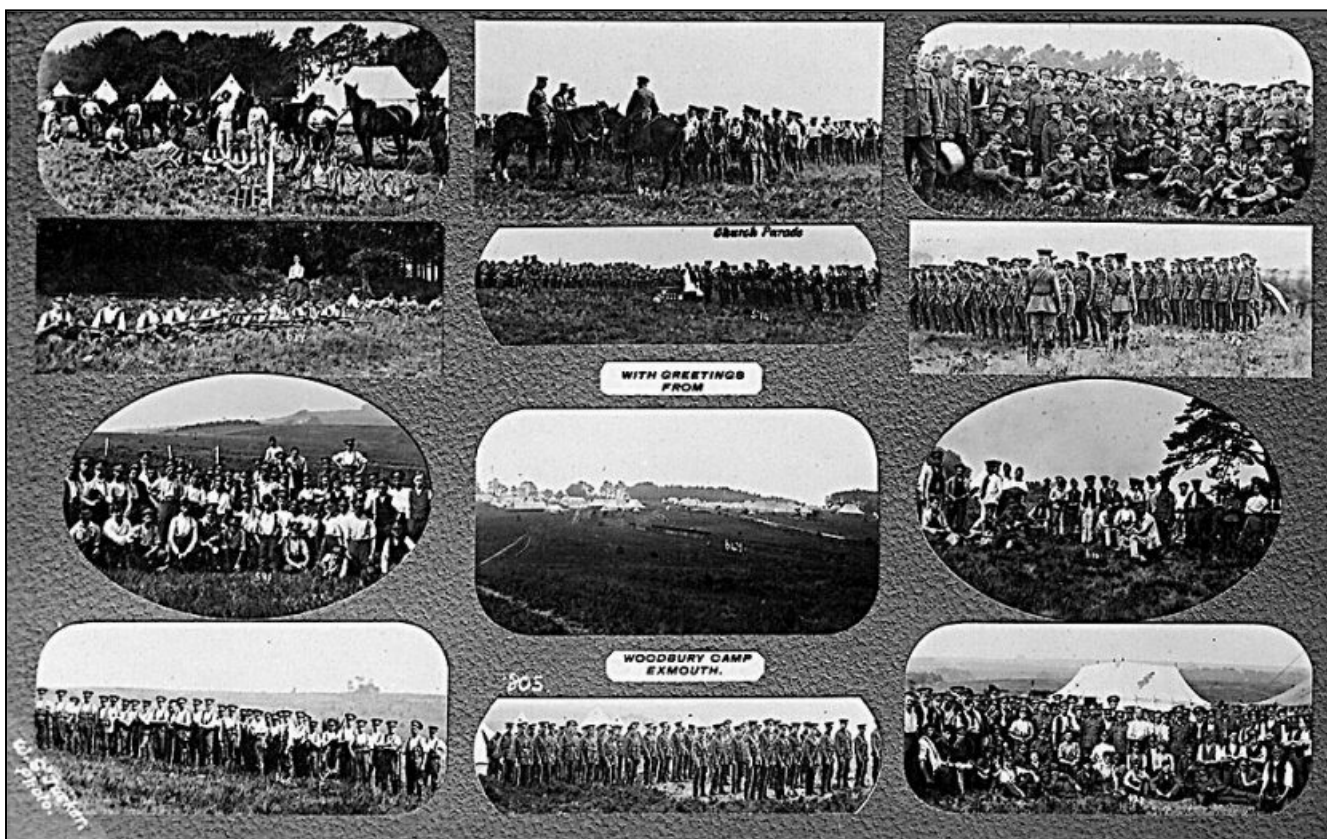
Military Camp on Common 1913.



Military Camp on Common 1907.



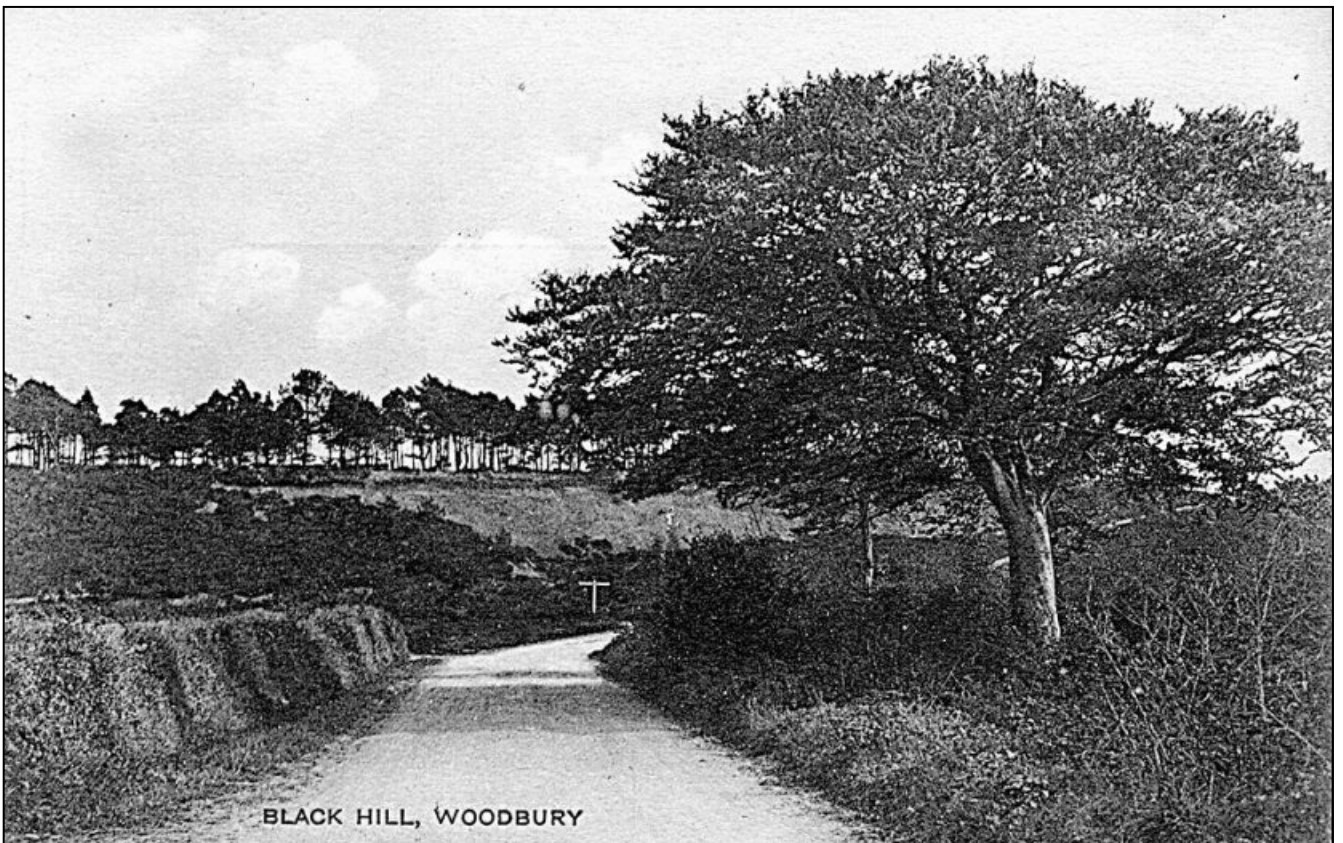
Military horses of Common 1907.



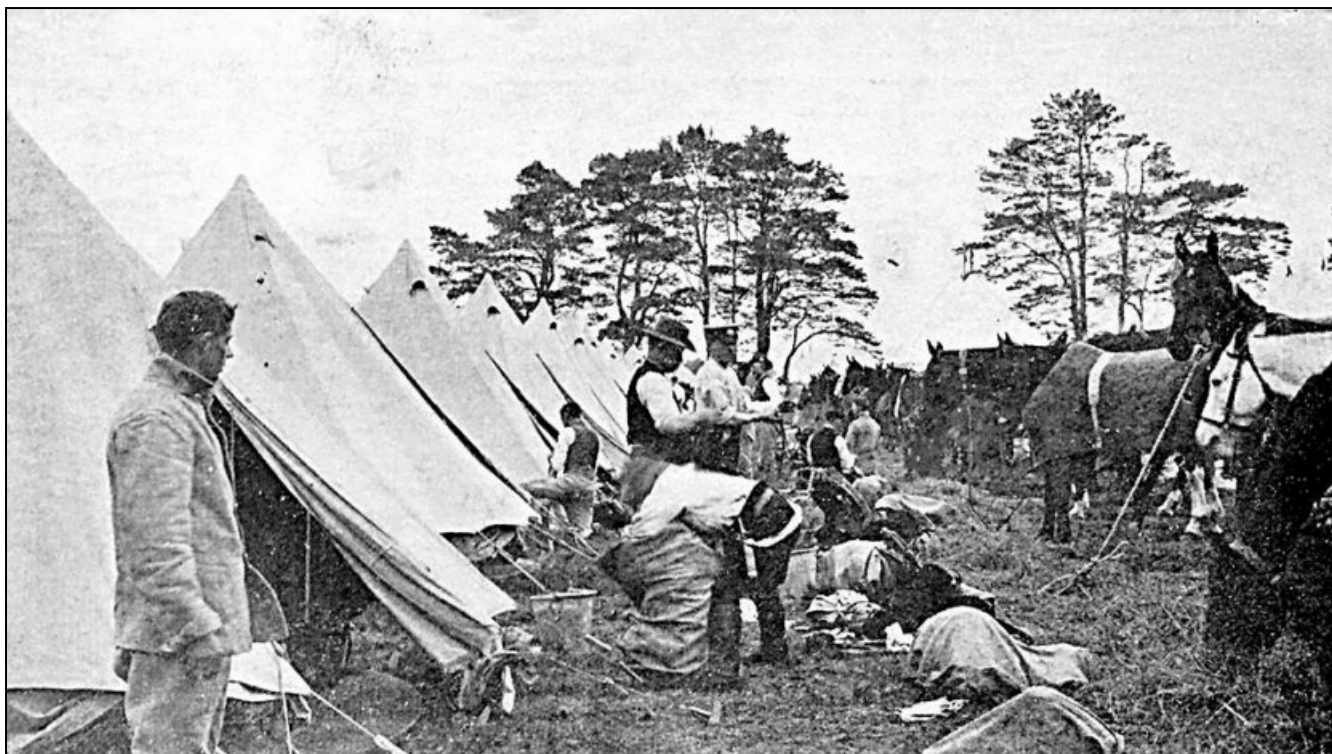
Military Postcard from Common 1906..



Road past Blackhill junction 1910.



Road before Castle 1920.



Somerset Infantry Yeomanry Camp on the Common 1905.



Woodbury Church

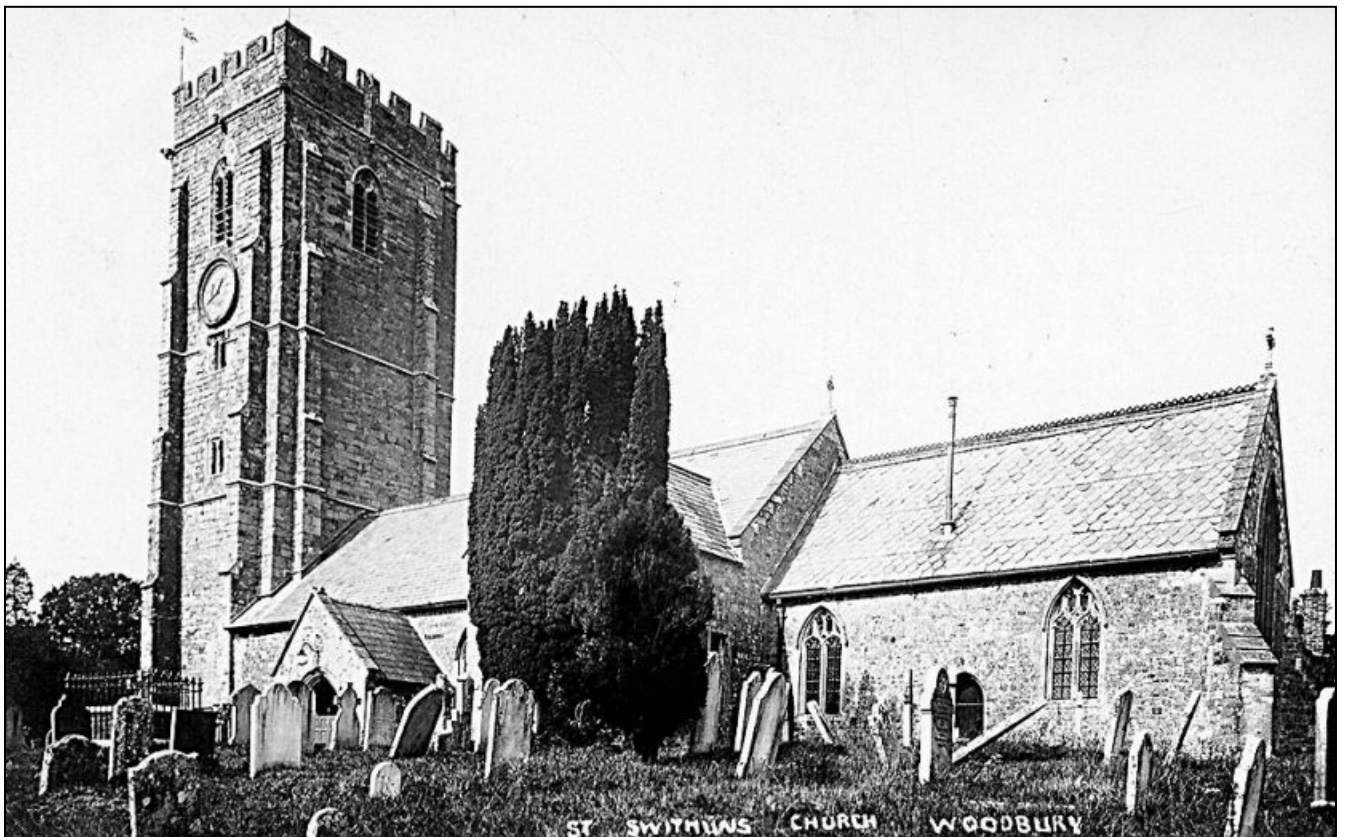
*I did not see one of Woodbury among your collection. - so thought you would like it. E.*

View across the Green towards the Church 1899.



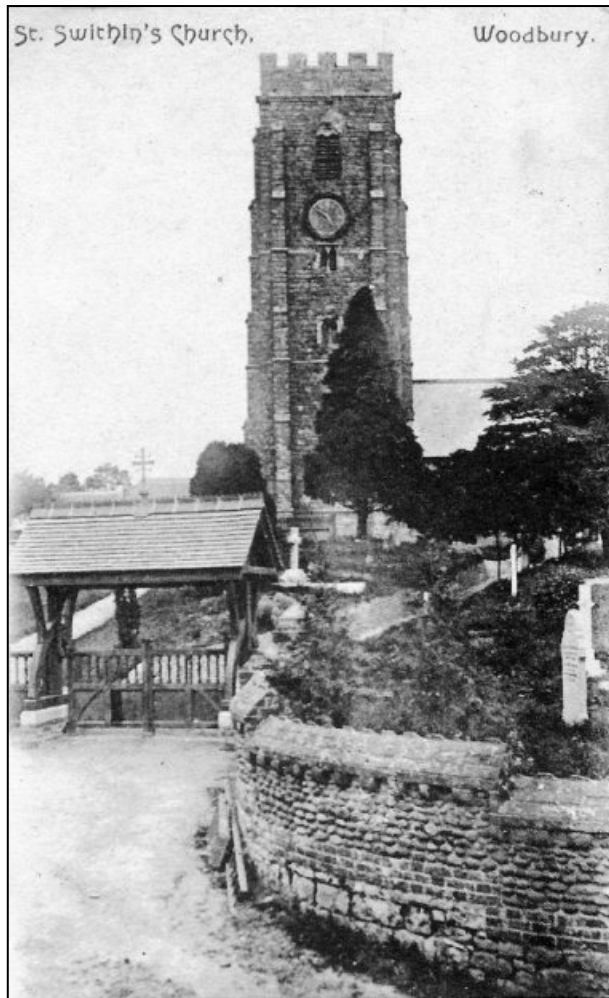
ST. SWITHIN'S CHURCH, WOODBURY.

Inside the Church 1916.



ST. SWITHIN'S CHURCH WOODBURY

View of the Church 1910.



New Church Lytch Gate 1906.



Top entrance to Stile Park 1927.



The Tea Cottage on the Common 1 1940.



The Tea Cottage on the Common 2 1940.





The Tea Cottage on the Common 3 1940.



View up Broadway 1915.



The Arch before the central reservation 1947.



The Pound in it's derelict state 1921.



The old Woodbury Post Office 1912.



The Arch 1935.



Group of trees on the Common 1945.



Group of trees on the Common 2 1945.



Group of trees on the Common 3 1945.



Broadway looking down below Rosemary 1913.



Globe Hill 1914.



The Arch 1950.



Military Camp on Common 1907.



View from top of Church Tower towards The Green 1940's.



Haydons and Parish Room 1920.



View to School 1920.





Picture taken from Stile Park looking down Broadway 1935.



View towards the School 1905.



Gillbrook 1940..



View from top of Church Tower 1904.



The road through the the Castle 1904.



Same picture, but different hand tinted version 1904.



The road down from the Castle 1904.



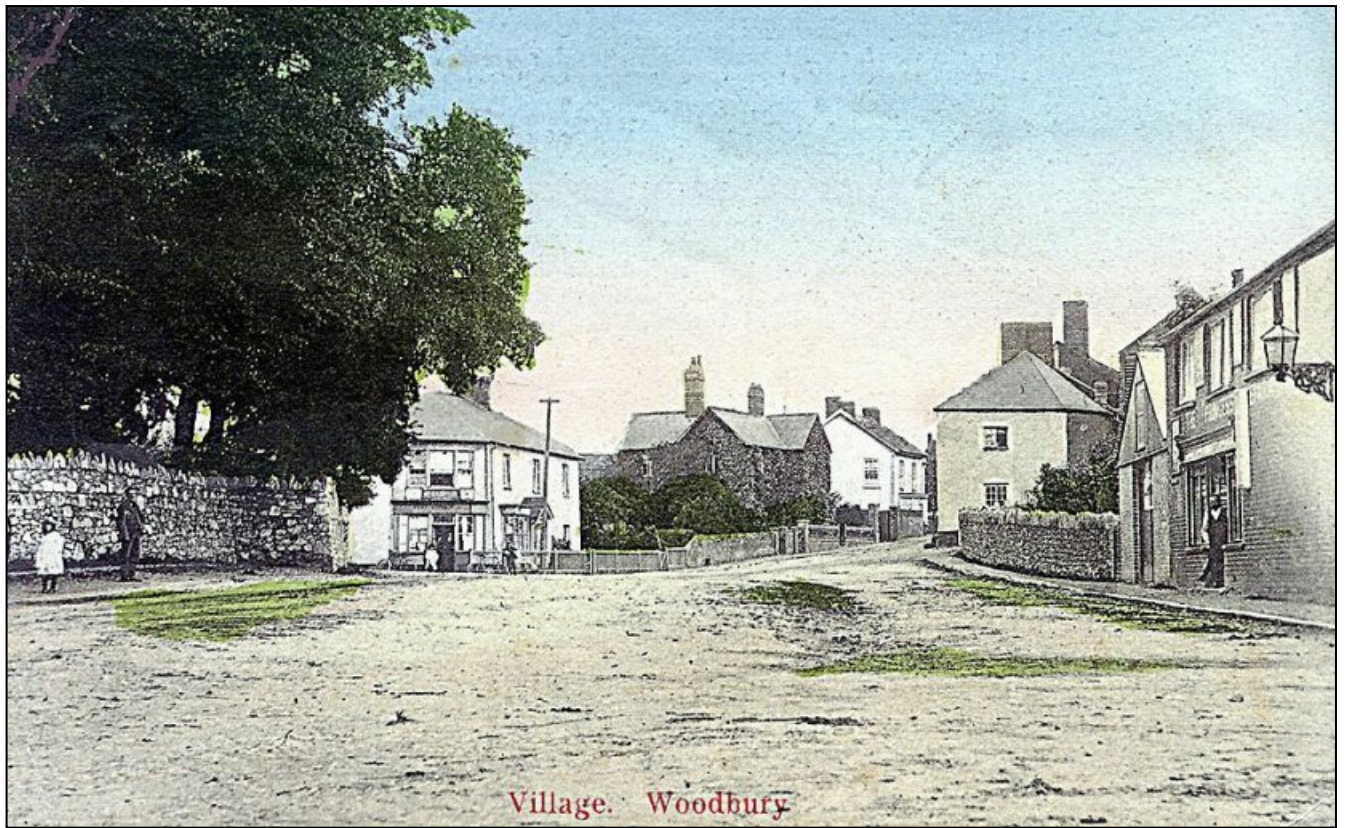
Mirey Lane 1908.



Clapps c.1920's.



Clapps c.1950's.



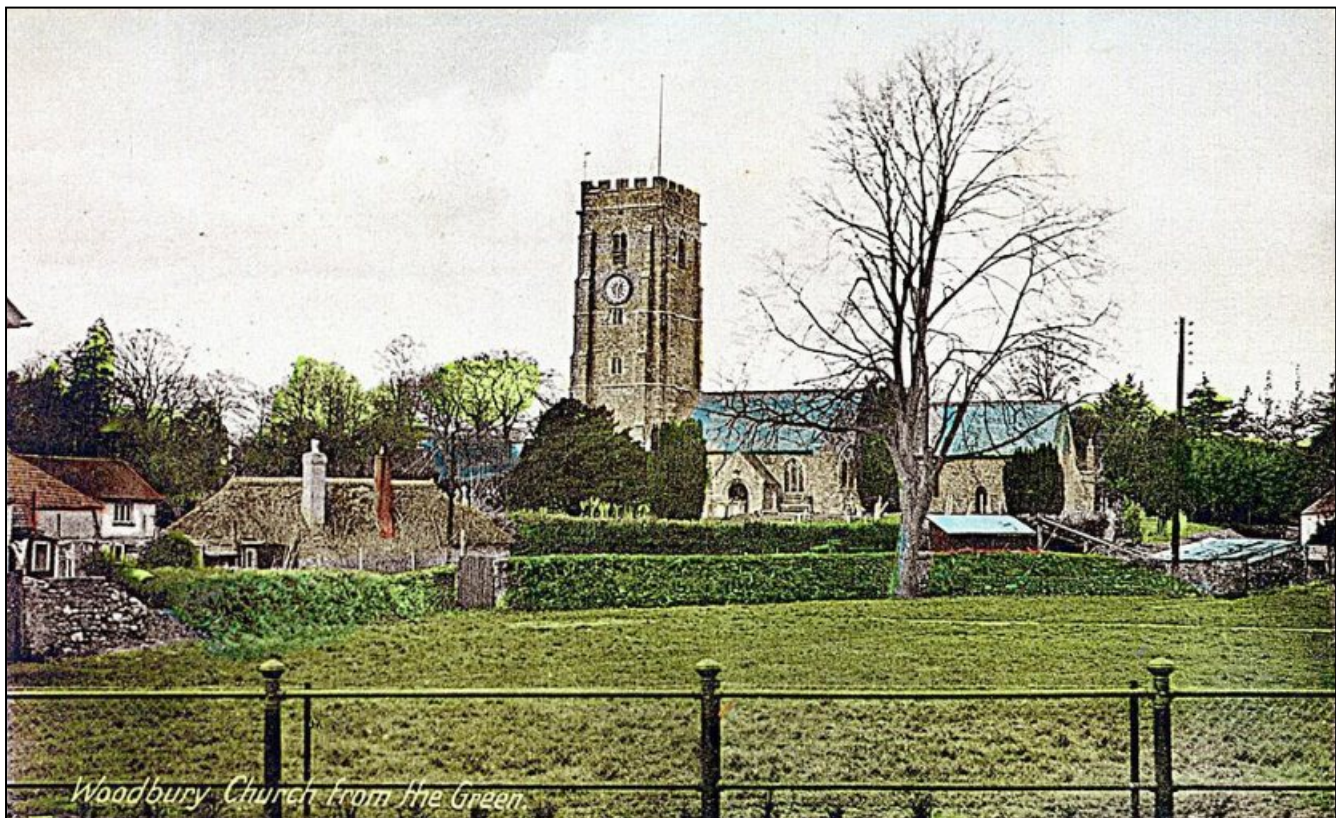
The Arch 1904 .



Postcard of AA patrolman at the Crossroads 1940's.



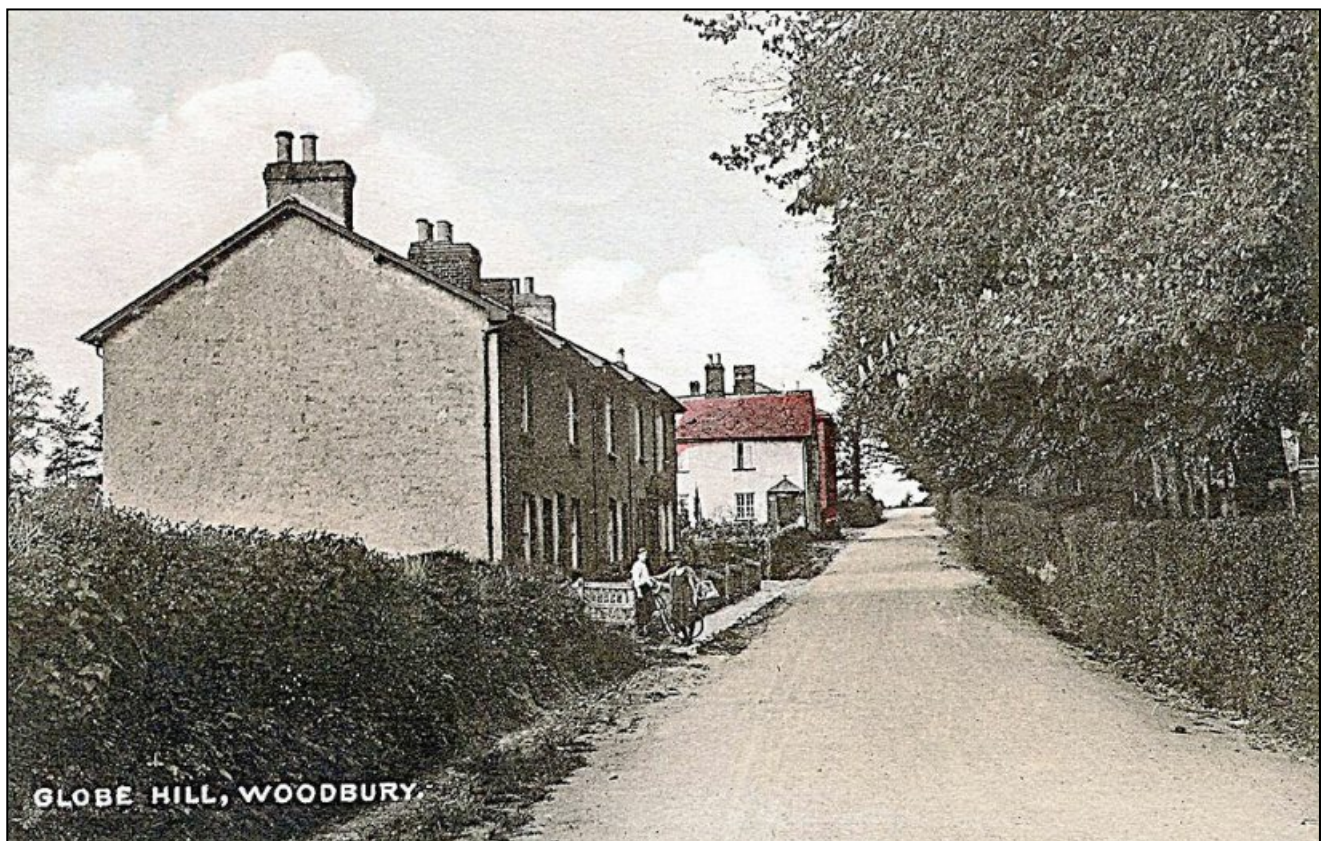
Crossroads 1920.



From the Green to the Church 1940's.

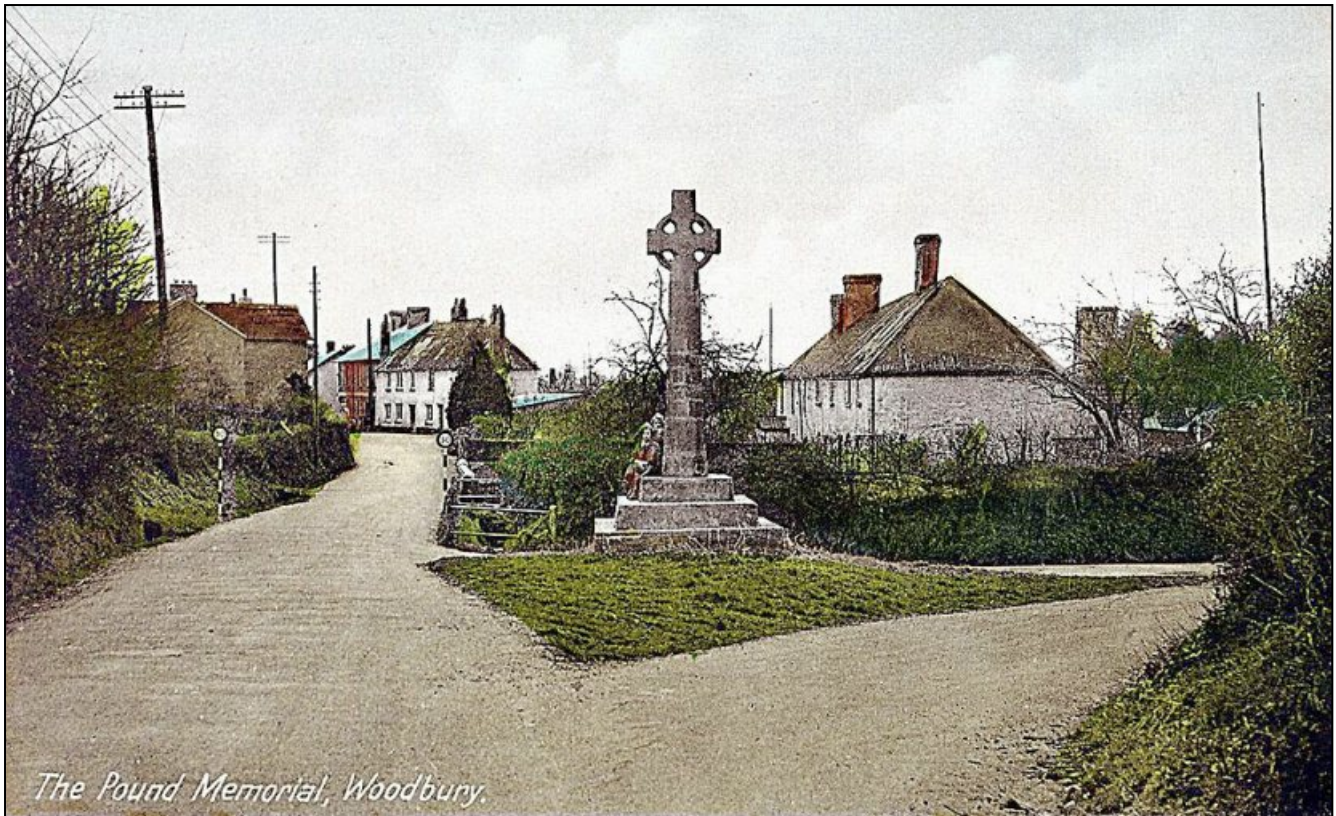


Gillbrook Cottages 1920.

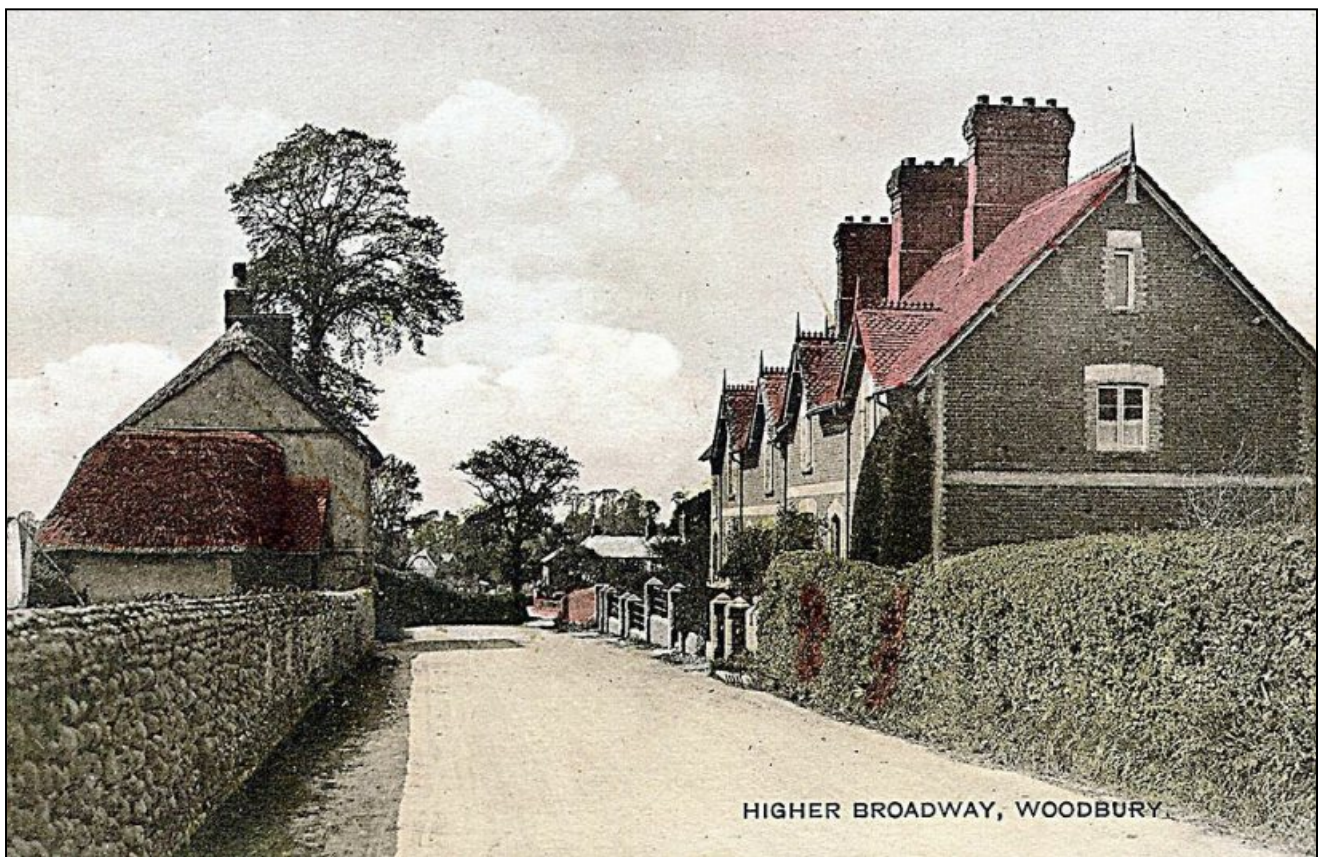


Globe Hill 1914.





The Pound Cross 1925.



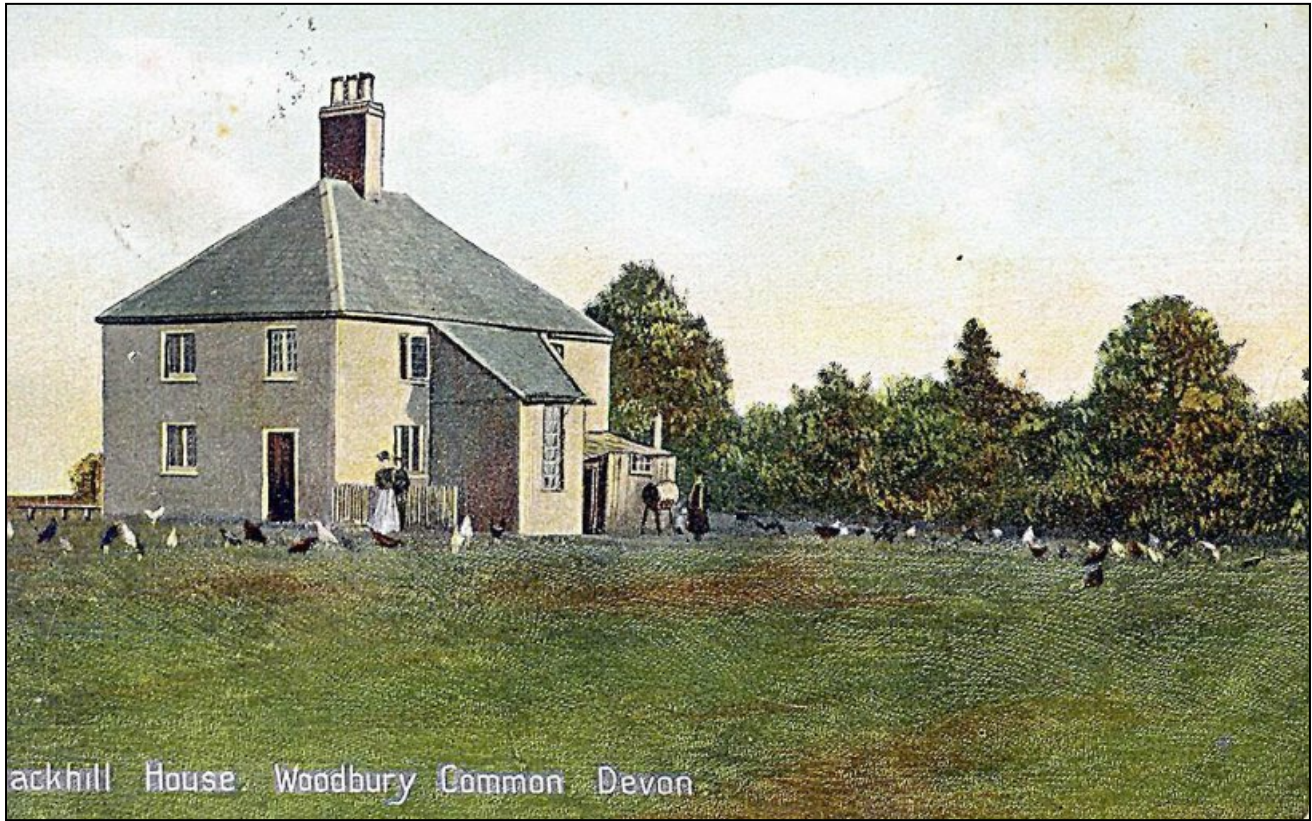
Higher Broadway 1930.



View towards the School 1909.



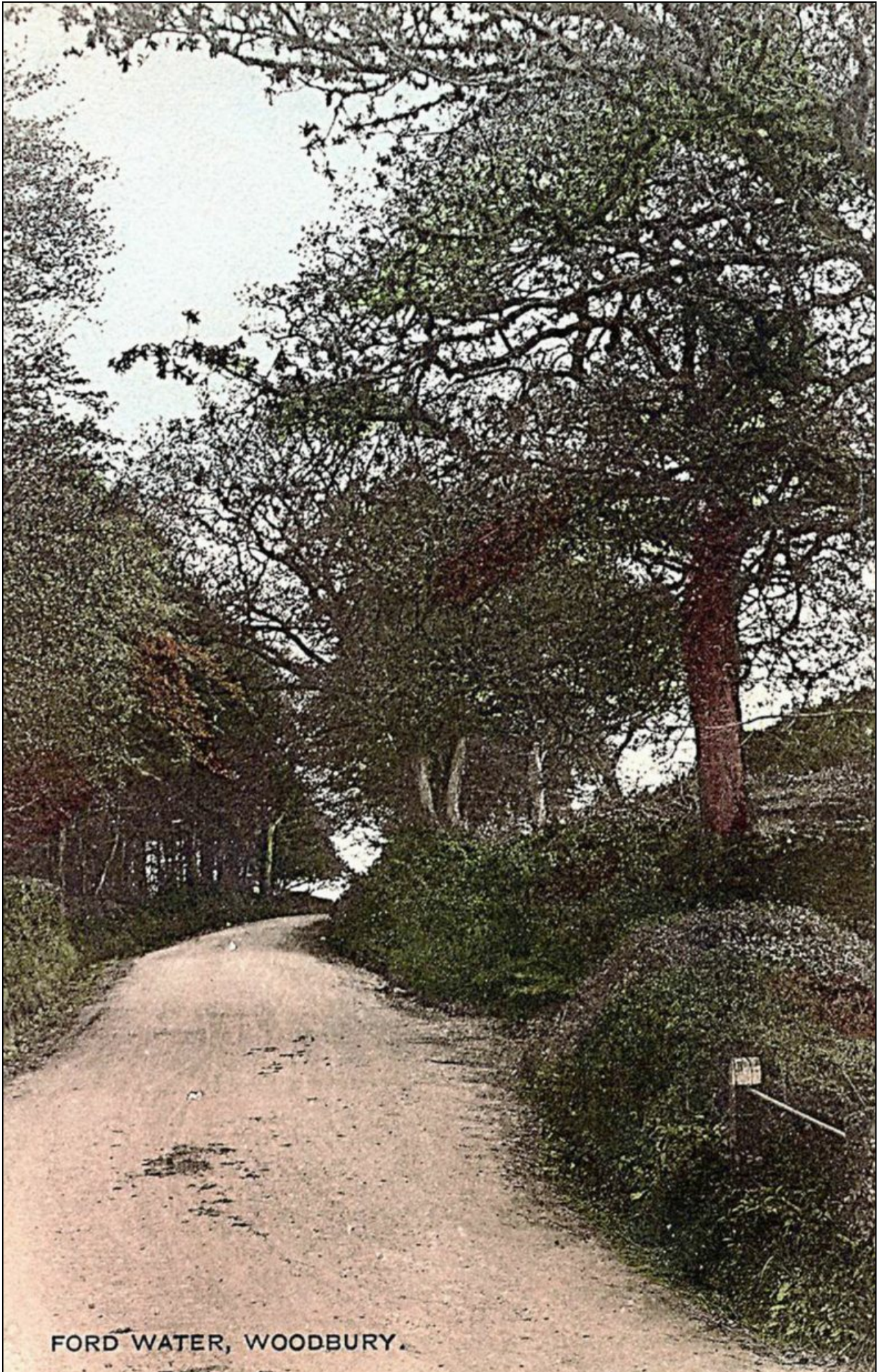
The Pound 1915.



Blackhill House 1930.



The road through the Castle 1904.



FORD WATER, WOODBURY.

Going up from Ford Water.

